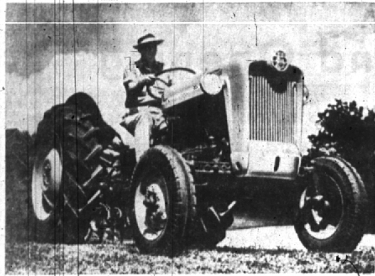


BIRMINGHAM BUSINESS BRIEFS



A LARGE WORKING AREA and increased off-street parking area plus an addition in machines is now offered by the Birmingham Laundry since moving into new quarters at 1000 S. Adams. Previously the business was located at 1287 S. Woodward. In 2200 square feet of floor area the firm now has 25 small automatic washers, two commercial washers, six dryers and a commercial-size ironer. Plans call for the eventual opening of a drive-in window under the canopy pictured at left and adequate paved off-street parking is provided on the property. The building was designed by J. Lucas, Royal Oak architect. The firm is operated by a partnership of Norman and Kenneth Barrett. (Eccentric Photo)



FORD MOTOR COMPANY'S new "800" series, full three-plow tractors, are designed for heavy work in all types of soil. Another power series, the "600" with three models, also is offered by Ford for 1955, marking the first time on the almost half-century history of Ford tractor production that the company has offered more than a single size tractor. According to Irving A. Duffy, vice president of Ford and general manager of the Tractor and Implement division here, the two series represent the realization of some of our key product plans, plans which also included the rehabilitation of our Highland Park tractor plant which has been completed at an investment in the tens of millions of dollars.

Language School Has Branch Here

A branch of the Berlitz School of Languages has opened here at 148 N. Woodward with E. A. Ortega, director of the school's Detroit office, acting as manager. The Birmingham branch has started classes in French, Spanish, German and Italian, but more language classes can be arranged if the need exists, according to Ortega.

All are conversational courses taught by native teachers with instruction available between 9:30 a.m. and 9:30 p.m. daily. All information or instruction here may be obtained from the Detroit office in the David Whitney building. Assistant manager here and an instructor in French is Yves Caucheteux. The Berlitz school has branches throughout the world with 25 schools in major cities throughout the U.S. The school is 77 years old.

To Elect Directors Of Credit Bureau

The annual meeting to elect officers of the Birmingham Credit Bureau, 139 W. Maple, will be held Monday evening, Jan. 17, at 5:15 p.m.

Shareholders and members of the corporation will vote on two directors for two-year terms and two directors for one-year terms.

Osteopaths Open New Offices Here

Russell B. Stephens and John P. Campbell, both Doctors of Osteopathy, have opened offices in the new contemporary modern clinic building at 522 E. Line. Dr. Stephens, who has practiced here for 20 years, formerly had an office in the Hanna building. A graduate of Birmingham High school, he attended the University of Wisconsin and graduated from the Des Moines Still College. Dr. Campbell, an oculist, also is a graduate of the Des Moines College and formerly had his practice in Detroit. The office, complete with X-ray and general office space, was designed by Paul Moffett, Birmingham architect.

Insurance Agency In Larger Quarters

After four years in the general insurance business here, the Beresford Thompson Agency has moved its offices to obtain more space. Now located in the Birmingham Savings and Loan building, 55 W. Maple, the new offices are three times larger than the previous office at 178 N. Woodward. The firm is operated by Ed Beresford and Otha Thompson.

Chair Firm Sold

The Birmingham Chair Rental firm, formerly located at 1505 Ax-tell, Troy Township, has been bought by the Young Chair Rental Service, 329 N. Main, Royal Oak, with both companies to be operated from the Royal Oak office.

Village Nursery School

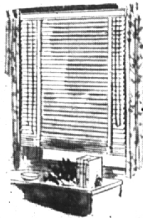
3280 Franklin Road
FRANKLIN VILLAGE
A FINE SCHOOL FOR LITTLE PEOPLE
Transportation Furnished

- Nursery
- Kindergarten

PHONE
Mayfair 6-2790 or
Mayfair 6-3020

Your Windows Need Decorating, TOO!

As a prominent part of your home they call for intelligent use of shades and blinds for looks as well as functional use. The way they are now may be detracting from the careful decorating you've done for your home. So, if your shades or blinds are not rendering the service they should, we've years of experience



And The Finest WINDOW SHADES

custom made while you wait, and a variety of colors and prices to choose from.

VENETIAN BLINDS

custom made enameled steel or aluminum styles to choose from.

JUDD TRAVERSE RODS

COME TODAY TO

BIRMINGHAM PAINT

Glass & Wallpaper Co.

335 E. Maple MI 4-3737

Store Hours Monday thru Friday, 8:30 to 5:30; Saturday 8:30 to 5:00

Follow the Thrifty crowd to our Mid-winter CLEARANCE

SAVINGS IN MOST DEPARTMENTS

MULHOLLAND'S Annual Sale is now in progress, and while we are not over-stocked in many lines we still are able to offer some outstanding bargains among our finest merchandise in many of our departments. Come in and see!

One Lot of Ladies' Fall & Winter

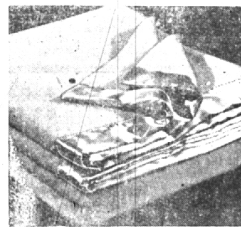
DRESSES Wools, Crepes and Jerseys **1/3** off Marked Prices
\$3.95 to \$39.95

One Lot of Children's

DRESSES • SNO SUITS • COATS **1/3** OFF MARKED PRICES

Be Sure to See Our **NUMEROUS DISPLAYS** of **BROKEN LOT MERCHANDISE BARGAINS** AS MUCH AS **1/2** OFF

of Wayne Maid **DRESSES** Regularly Priced \$3.95 **2 FOR \$5.00**



WINTER CLEARANCE

OF OUR FAMOUS BRAND

BLANKETS

WOOL AND RAYON AND RAYON-NYLON BLEND

72 x 90 Good Color
80 x 90 Selection
90 x 108 Regularly Priced from \$8.95

20% Off Marked Prices



IN OUR MEN'S AND BOYS' DEPARTMENT

MEN'S AND BOYS' COLORED VESTS

A colorful selection of tattersalls, corduroys, wools, etc. Sizes 6 to 20 and men's sizes 36 to 46.

ALL MARKED DOWN **1/3**

Boys' TOPCOATS

All wool-plain and patterned fabrics of tweed and flannel. Zip-in linings for cold weather.

Regularly \$21.95 to \$39.95 **20%** OFF

Entire Stock of Boys' Warm Winter JACKETS

Many types including the wool shells with the miracle linings and canvas coats. Many have hoods.

Regularly Priced \$9.95 to \$27.95

1/3 OFF Marked Prices

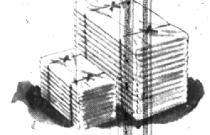
Boys' and Men's CORDUROY TROUSERS

Dark and Light Solid Colors and Patterns

Boys' Sizes 6 to 22 Men's Sizes 30 to 42

Regularly Priced \$4.95 & \$6.95

20% OFF Marked Prices



Bate's Percalé

SHEETS

WHITE	Reg.	Sale
72 x 108	\$3.95	\$3.45
81 x 108	\$4.50	\$3.95
Pillow Cases		
42 x 38 1/2	\$1.00	90c
WHITE SCALLOPED		
72 x 108	\$3.75	\$3.95
81 x 108	\$3.25	\$4.50
Pillow Cases		
42 x 38 1/2	\$1.35	\$1.20
COLORED SHEETS		
72 x 108	\$3.75	\$3.95
81 x 108	\$3.25	\$4.50
Colored Cases		
42 x 38 1/2	\$1.35	\$1.10

Boy's Robert Bruce

WOOL SWEEPERS

Plain Colors and Patterns in Most Sizes from 8 to 40 **1/3** OFF MARKED PRICES
Reg. \$4.95 to \$8.95

One Lot of Our Better Quality MEN'S and BOYS' SPORT SHIRTS

Regularly Priced Men's \$7.95 to \$15.95 Boys' \$1.95 to \$3.95

on sale **20%** OFF.

The F. J. Mulholland Co.

STORE HOURS 9:00 a.m. to 5:30 p.m.