

BHS Cagers Face Ferndale

Tomorrow night Maple cagers invade Ferndale for an all-important League contest with the opening jump set for eight o'clock.

In the last encounter between the two clubs, Birmingham defeated the Lines 92-48 in a thrilling contest.

Tomorrow night Birmingham will put the same team on the floor as in the previous encounter.

but Ferndale must revise its lineup because the Lines lost the services of All-Stater Tom Turner who was graduated last week.

Other Ferndale starters are Clarence McKinney, six foot center who racked up 15 points in the last Birmingham game; Larry Shelton and Mark Radman, who will play guards; and Dick Kienbaum will fill one forward spot.

This season the Eagles have not played up to their usual standard and possess a three-win three-loss record with one win against three losses in loop competition. The Lines' lone conquest was over East Detroit while they lost to Birmingham, Port Huron and Mt. Clemens.

Cocher Ray Burkhardt, referring to his team, says "They'll be at the game."

We Heard It Said By:

DOX McNAB, editor of the Opti-matic, Southfield's Optimist bulletin: "The party that has the size 7's, but took a beating in the exchange. His hat, size 7 1/2, is a much better chap than he may trade with me anytime."

INSURANCE - BONDS
THE BIRMINGHAM AGENCY

INSURANCE for EVERY NEED
Phone MI 4-2422


114 S. Woodward—Birmingham
Charles E. Randall
Oscar P. Peterson
Bruce F. Randall
Frank W. Whitson

AFTER we SELL we SERVE

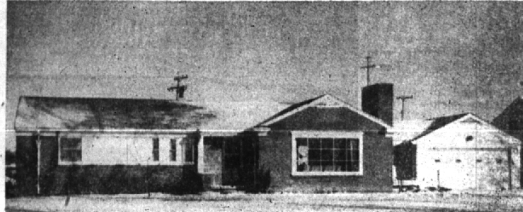
PERCY M. NELSON COMPANY
BILDORS OF DISTINCTIVE HOMES

When you invest in a good home we believe you should have the best . . . in materials fabricated by craftsmen who pride themselves in excellent all others in their trade.

Creators of the "LAUDERDALE ROOM"
MI 4-0335



COUNTRY CLUB VIEW



BOY — ARE WE ENTHUSIASTIC ABOUT THIS! Fresh new listing of a value packed brick ranch house on a 120 foot site overlooking the Birmingham Country Club. Homemaker's dream kitchen with natural wood cabinets, waste disposer, and ample breakfast area. Three bedrooms, bath and lavatory. PLUS pine library with built-ins, full basement, storms, screens and carpeting.

All wrapped up and ready for C.O.D. delivery to you at a "too good to be true" but it is! \$29,500.

HALL & YOUNG

Maple Road at Telegraph Inc. B'ham: MI. 6-2700
Det: JO. 4-5668

STATELY TREES AND SHUTTERED WINDOWS



If your taste calls for a unique and artistic setting and the charm only a Colonial can provide in the choicest section of Bloomfield Village—this is your home.

Two steps down from the impressive center entrance hall takes you into a really family sized activities room, paneled in oak.

The gracious living room is separated from the bay windowed dining room by louvered folding doors.

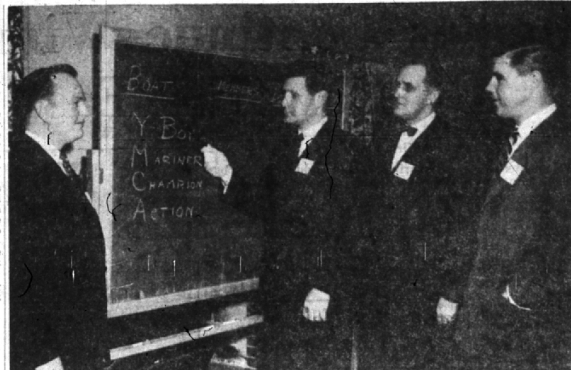
The kitchen offers every convenience and the breakfast room is cheery. There's a powder room too.

Four excellent bedrooms and two full baths comprise the second floor.

It's ready for immediate occupancy, everything is here for a move toward gracious living.

Benjamin & Stephens, Inc.

MIDWEST 4-8322 JORDAN 4-5728
259 So. Woodward, Birmingham, Michigan
OPEN 9 A.M. TO 9 P.M.



DRIVE CHAIRMEN DISCUSS CAMPAIGN WITH DINNER SPEAKER
Harold Kalbfleisch, Art Blakeslee, George Gullen, Warren Neville (Eccentric Photo)

YMCA Membership Drive For 1200 Opened at Dinner

At the Jan. 31 Kick-off meeting of the Birmingham YMCA Membership Enrollment month, which extends to March 1, General Chairman Art Blakeslee took the reports of his various workers and found that a total of 316 members had been enrolled to date.

This is 26.3 percent of the total of 1200 sought by the close of the campaign.

Using a motor boat race to Chicago and return as a competitive incentive among the four teams, the boat piloted by Captain Eric

Robinson took an early lead with 80 members reported. This combined with the money topped in gave them a point total of 48.

In second place is the boat Action under the direction of Captain Roland Erickson with 96 members and a point total of 48.

Letters Protest Moving of Park

Protests against moving Sham park are beginning to come to the Birmingham city commission.

Five letters—two of them with several signatures—arrived this week. (Two of those communications are published today elsewhere in The Birmingham Eccentric.)

"We will have the city manager answer all these letters with our reasons why we believe the transfer of the park is to everyone's mutual advantage," declared Mayor Charles Kendrick.

All the comments claim the advantages to business do not warrant moving the park south, there by permitting a municipal parking lot to be adjacent to the business section.

Commissioners, aside to the contrary, and have asked the voters to indicate their desires on the April 4 ballot.

Are you thinking of buying a new home? Then read the "San Sale Houses" columns on the Classified Ad page of this week's Eccentric.

BIRMINGHAM BLUE PRINT AND SUPPLY COMPANY
W. S. McAlpine, Prop.
• Blue Prints • White Prints • Photostats • Transparencies
QUICK SERVICE
while you wait—our pickup & delivery
Ph. MI 4-3738

Located in Birmingham Opposite Wielder's, 2418 S. Woodward
Open Weekdays & Saturdays A.M.

WE AIM TO PLEASE

Complete Convenient Services on Residential MORTGAGE LOANS

Use our nearby suburban office for FHA or conventional loans on new and existing homes. Experience sales services also available.

HOMER WARREN & COMPANY
600 Dime Bldg., Detroit 26
Woodward 1-9321
Suburban Office
4268 N. Woodward Ave., Royal Oak
Jordan 6-3188

BLOOMFIELD HILLS



EXCLUSIVE LOCATION TASTEFULLY DECORATED FINE STRUCTURAL QUALITY

This beautiful Colonial on choice corner lot, 165 x 181, in Bloomfield Village has 4 twin size bedrooms, living room 24 x 15, Dining Room 16.10 x 14, Large kitchen and breakfast nook, large paneled Den and screened terrace 28 x 11.6. Exceptional closet space, a special built-in cupboard for silver, Beautifully landscaped. Shown by appointment at your convenience.

Truly a Home of Distinction.
OPEN SUNDAY 1 P.M. - 6 P.M.

361 N. Woodward
Birmingham, Mich.

People's Column Thanks Community For Successful March of Dimes

The Editor:
It is my pleasure again to thank the residents of the Birmingham-Bloomfield Hills area for another successful Mother March on Polio campaign.

In spite of extremely cold weather last Thursday evening, several hundred women answered the call and made door-to-door contacts during the Porchlight hour.

To these, and to the mothers who organized the drive, my special thanks.

Thanks, too, to those of the Birmingham National Bank staff who worked into the night tabulating our returns; to the police officers and emergency police who provided us with stand by guards; the Community House which made its facilities available to us again; to

automobile dealers who supplied sound cars and drivers to alert residents at the last hour, and to business houses which supplied hot coffee and doughnuts to workers.

I'M PROUD of the people in this area and know that if every community went all-out as this one does, the National Foundation for Infantile Paralysis would have financial backing, enough to really lick polio.

It's hard to say "thank you" and not miss some group which did outstanding service, but my sincere thanks go out to everyone who in any way took part in the 1955 drive.

JOHN B. TAYLOR, Co-Chm., Oakland County Chapter, National Foundation.

Thousands of people read The Eccentric Classified Ads. So remember, if you want to sell that hard-to-get-rid-of article, advertise it in the Want Ad section of The Birmingham Eccentric.

Let Me Build Your Home
HENRY M. HENDERSON
GENERAL CONTRACTOR
Custom Building—Remodelling

Free Estimates Gladly Given
VE 6-1847 or VE 6-1833
13851 Warwick, Detroit 23



A RAMBLING ONE-FLOOR AT WING LAKE



Here's that "seldom-found" family home, all on one floor, in one of our nicest private lake communities. Planned for a growing family!

- Living Room . . . 18 by 25, plus sunny bay . . . big Dining ell
- Library or Activities room with fireplace, adjoining Living Room
- 4 twin-size Bedrooms . . . with 2 tiled Baths . . . plus extra Lavatory
- Cheerful, roomy Kitchen, metal cabinets . . . Breakfast lounge
- Laundry next to the Kitchen . . . only a step away!
- Lot 223 feet wide . . . lots of play space.

The lake is nearby . . . with a newly-developed beach and play area. It's a short walk to the Wing Lake school . . . and a bus to Vaughan for high school. Taxes are only \$350 . . . and water is supplied by a community well.

Here's one that has everything! Let's look today!

CALL
MAX BROOCK INC.
REALTORS
ESTABLISHED 1914

300 S. Woodward Ave. Birmingham, Mich.
MI 4-6700 JO 4-6700

BLOOMFIELD VILLAGE



CHARLES J. VAN HORN

MI 6-2400
JO 4-5632