

**Dear Jack:**

"Since you asked about exclusive listing, Jack, I'll give you my advice. The right time to try your property exclusively with us is NOW—before you list to sell it any other way."

"Why is that?" Jack inquired.  
 "There are several reasons," I replied. "The biggest reason though, is that it results in a quicker sale. The ideal time to promote the property is while it is still FRESH to the public. No merchant, whether he is selling houses, used cars, or crackers, likes to push a SHOP-WORN article. People lose interest in a property which has been on the market a long time."  
 "I know that's true," Jack said, "but is there any other reason?"

"Yes," I answered, "we help you set a fair price by carefully appraising your home. And if there is any repair work or remaining necessary for a quick sale, we point that out. And because we know the job is strictly up to us, we push the sale through extra advertising and promotion."

"That makes sense," Jack volunteered. "Get started on it TODAY."

Cordially yours,  
 Harry Watts

**B. F. CHAMBERLAIN CO.**  
 Real Estate

420 S. Woodward, Birmingham MI. 6-1500



**BOWLING SCORES**

**BHS-GAA BOWLING**

1. Nancy Palmer	139
2. Pat Forhan	137
3. Nancy Hayes	122
4. Mary Ojala	149
5. L. Thompson	148
6. Pat Fuller	145
7. Heidi Hunter	141
8. Marjorie Wash	141
9. Sarah Hunt	140
10. Barb Hedrick	140
11. Ann Stewart	140

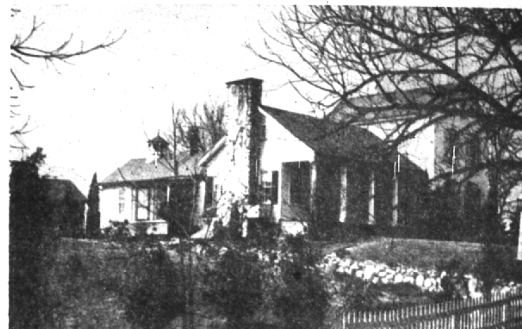
High Individual series—Liz Thompson—293. High team individual—Team 14—captain Mary Slater—645. High team series—Team 18—captain—May Slater—1274.

**BIRMINGHAM COUNTRY CLUB LADIES BOWLING LEAGUE**

Team	Won	Last
Stevens	4-1	11-1
Jagers	4-1	11-1
Mattie Niblicks	4-1	11-1
Cook	4-1	11-1
Sue Jones	4-1	11-1
Mattie Niblicks	4-1	11-1
Stacie Masher	4-1	11-1
Pravics	4-1	11-1
Patricia	4-1	11-1
Chippers	4-1	11-1
Dynamites	4-1	11-1
Wedgies	4-1	11-1

Season Highs: Ind. L. Haverhill—216. Team—215. Niblicks—212. Lovell—202. Ind. Martek—201. Lovell—200. Team—199. Wainwright—199. Team—198. Wainwright—197. Team—196. Wainwright—195. Team—194. Wainwright—193. Team—192. Wainwright—191. Team—190. Wainwright—189. Team—188. Wainwright—187. Team—186. Wainwright—185. Team—184. Wainwright—183. Team—182. Wainwright—181. Team—180. Wainwright—179. Team—178. Wainwright—177. Team—176. Wainwright—175. Team—174. Wainwright—173. Team—172. Wainwright—171. Team—170. Wainwright—169. Team—168. Wainwright—167. Team—166. Wainwright—165. Team—164. Wainwright—163. Team—162. Wainwright—161. Team—160. Wainwright—159. Team—158. Wainwright—157. Team—156. Wainwright—155. Team—154. Wainwright—153. Team—152. Wainwright—151. Team—150. Wainwright—149. Team—148. Wainwright—147. Team—146. Wainwright—145. Team—144. Wainwright—143. Team—142. Wainwright—141. Team—140. Wainwright—139. Team—138. Wainwright—137. Team—136. Wainwright—135. Team—134. Wainwright—133. Team—132. Wainwright—131. Team—130. Wainwright—129. Team—128. Wainwright—127. Team—126. Wainwright—125. Team—124. Wainwright—123. Team—122. Wainwright—121. Team—120. Wainwright—119. Team—118. Wainwright—117. Team—116. Wainwright—115. Team—114. Wainwright—113. Team—112. Wainwright—111. Team—110. Wainwright—109. Team—108. Wainwright—107. Team—106. Wainwright—105. Team—104. Wainwright—103. Team—102. Wainwright—101. Team—100. Wainwright—99. Team—98. Wainwright—97. Team—96. Wainwright—95. Team—94. Wainwright—93. Team—92. Wainwright—91. Team—90. Wainwright—89. Team—88. Wainwright—87. Team—86. Wainwright—85. Team—84. Wainwright—83. Team—82. Wainwright—81. Team—80. Wainwright—79. Team—78. Wainwright—77. Team—76. Wainwright—75. Team—74. Wainwright—73. Team—72. Wainwright—71. Team—70. Wainwright—69. Team—68. Wainwright—67. Team—66. Wainwright—65. Team—64. Wainwright—63. Team—62. Wainwright—61. Team—60. Wainwright—59. Team—58. Wainwright—57. Team—56. Wainwright—55. Team—54. Wainwright—53. Team—52. Wainwright—51. Team—50. Wainwright—49. Team—48. Wainwright—47. Team—46. Wainwright—45. Team—44. Wainwright—43. Team—42. Wainwright—41. Team—40. Wainwright—39. Team—38. Wainwright—37. Team—36. Wainwright—35. Team—34. Wainwright—33. Team—32. Wainwright—31. Team—30. Wainwright—29. Team—28. Wainwright—27. Team—26. Wainwright—25. Team—24. Wainwright—23. Team—22. Wainwright—21. Team—20. Wainwright—19. Team—18. Wainwright—17. Team—16. Wainwright—15. Team—14. Wainwright—13. Team—12. Wainwright—11. Team—10. Wainwright—9. Team—8. Wainwright—7. Team—6. Wainwright—5. Team—4. Wainwright—3. Team—2. Wainwright—1. Team—0.

**REMODELED FARMHOUSE ON 5 BEAUTIFUL ACRES**

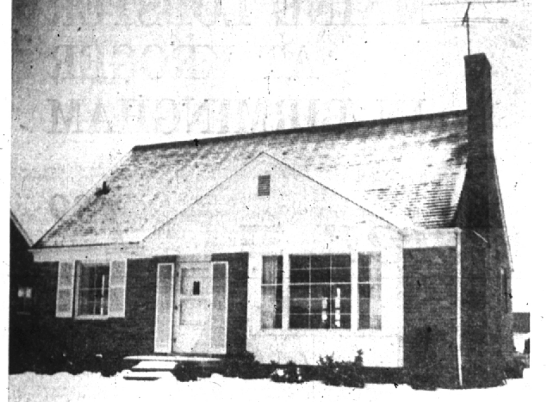


Here's a pre-view of summer . . . and the fun you can have living in this attractive remodeled farmhouse. Beautiful evergreens . . . stable for horses . . . kennels . . . outdoor ring . . . fun for everyone in the family!

- THE HOUSE**
- Attractively remodeled . . . completely up-to-date
  - 30-foot Living Room . . . huge fireplace . . . separate Dining Room with sunny bay
  - 2 Bedrooms and 2 Baths on first floor . . . 2 bedrooms and Bath upstairs
- THE STABLE**
- 7 box stalls for horses . . . tack and Recreation Room
  - Kennels . . . chicken pens . . . room for other activities, pool
- THE GROUNDS**
- 5 rolling, scenic acres . . . specimen evergreens . . . stately trees
  - Outdoor riding ring
  - Gardens . . . room for all kinds of farming
- Birmingham Schools . . . an excellent neighborhood . . . taxes only \$300 annually. Here's something for all the family . . . and the price is only \$42,500!

CALL  
**MAX BROOK INC.**  
 REALTORS  
 300 S. Woodward Ave. Birmingham, Mich.  
 MI 4-6700 JO 4-6700

**LIVE HERE!**



Clean as a pin, this attractive colonial bungalow offers comfortable, economical living. With a kitchen by Youngstown you enjoy automatic dishwashing and waste disposal. Two bedrooms and tiled bath down—plus an additional room and bath ready for finishing up. (Why not "do it yourself"?) Extras include aluminum combination storms, water softener, carpets and drapes. Full basement, of course. Call us for your personal inspection—do it now!

**HALL & YOUNG**  
 Inc. B'ham: MI. 6-2700  
 at Telegraph Det.: JO. 4-5668

**Church League In Second Half**

The second half of the Birmingham YMAA church basketball league got underway Monday night with First Methodist church defeating Southfield Methodist 30 to 24 in a game called at the end of the hour to permit the second game of the evening to go on. Church League rules permit only one hour for the playing of a game. Southfield Methodist held a 7 to 0 lead at the end of the first quarter of play but lost this as Jim Johnson of First Methodist scored 10 points in the second quarter to give the Maple Avenue boys a 25 to 17 half-time lead. This was reversed at the end of the third quarter, the fourth quarter. Bernie Stogers' fourth quarter basket was the only thing an opponent's 15 points led both with Jim Richardson getting 9 for Southfield Methodist.

**CONGREGATIONAL** Church of Birmingham started scoring early in its game with Rosemeor Lutheran Church and after sporting a half-time lead of 10 points went on to win 32 to 25. Tom Wright's 19 points paced the winners while Tom Sherman netted 14 points.

First Baptist's 4 bunch continued its winning ways with a 44 to 37 win over St. James Church. First Baptist led 21 to 19 at the half and then gradually pulled away as Ronnie Metcumb and his colleagues scored from the 17-foot line. Pete Kays with 12 points was best for St. James.

**Downs Avondale**

By the score of 53 to 38, Avondale was beaten by Troy on Feb. 18 at Avondale.

In a high scoring first quarter Troy took a lead of 6 points and then led the rest of the game by outscoring Avondale in every quarter.

Putting 17 points in for Troy was Moschik followed by Arco with 16, also of Troy.

**SCORE BY QUARTERS**

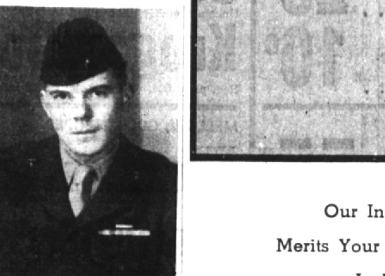
Team	1st	2nd	3rd	4th	Total
Troy	14	11	11	17	53
Avondale	11	11	11	5	38

**Lions' Star Speaks At Lions' Meeting**

Lou Creekman, a fast, five-inch, 250 pound lineman for the Detroit Lions spoke Wednesday at a meeting of the Birmingham Lions Club at the Community House.

Lou has been a five-time player in the Pro Bowl game, started in college on the William & Mary eleven.

Household goods of every description are offered for sale in the Classified Columns of The Birmingham Eccentric.



PFC JOHN R. Doyle, a former Birmingham resident, who is attached to the third Marine Division, is now serving in Japan and expects to be leaving in March.

**TRIED and TRUE**



Here is a fine Colonial home in excellent condition, 1950-built, you'll find it answers your housing problem so very nicely, and it's gracious too.

- Mahogany paneled library Bookcases Porch
- Breakfast space in kitchen. Disposal
- 4 bedrooms, 2 tile baths up 1st floor lavatory
- Mosaic tiled basement floor
- 115-foot site with a fenced dog run for "man's best friend".

Birmingham Country Club is nearby. School service in the Birmingham district. Appointments arranged to suit your convenience.

Our Integrity  
 Merits Your Confidence  
 In Us.  
**SNYDER KINNEY & BENNETT**  
 Realtors  
 239 S. Woodward Midwest 4-7000

**CHARM — QUALITY — DISTINCTION**



Beautiful custom 4 bedroom, 2 1/2 bath brick home in Beverly Hills on half acre.

Living room	16 x 21
Dining room	11 x 14
Panelled Den	11 x 13 1/2
Spacious Breakfast Room	

The finished Recreation Room with custom built bar, parquet floor and fireplace emphasizes the luxury appeal of this home.

There are numerous inclusions, such as complete wall to wall carpeting in all rooms, storms and screens, some awnings—just move in and place your furniture.

And the price is just \$37,000.00

**CHARLES J. VAN HORN**  
 361 N. Woodward Birmingham, Mich. MI 6-2400 JO 4-5632