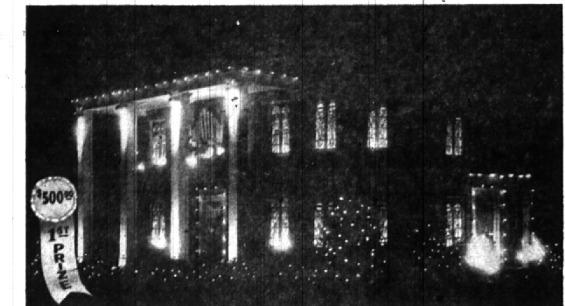


Light Up The Town This Christmas!

Decorate Windows, House or Trees with Colorful Illumination



Take A Tip from Contest Winners When Planning Outdoor Decorations

Before you start putting up your outdoor Christmas lights, take a minute to study these pictures of prize-winning Missouri, California and Minnesota homes.

Each was a top prize winner in its own city's locally sponsored holiday lighting contest and finally, top winners in a nationwide Christmas lighting contest.

Proof that originality, artistic merit, ingenuity and lighting technique can pay each contestant is evidenced by the \$1,000 the home owners won for their efforts. In each city, local sponsoring organizations received similar cash awards.

YOU DON'T need a house as large as the first prize winner's to receive some of the interesting ideas for your own home.

Although he's been putting up decorations for eight years, this Kansas City home owner actually spent only \$25 for new outdoor Christmas decorations last year.

While the value of his decorations is, of course, many times that, this wise homeowner shops at surplus and other stores throughout the year for his unusual display.

FOR THE holidays, all windows were transformed into colorful "stained glass" with inexpensive crepe paper. Old carpet rolls, given a coat of lime-green gold paint, were used to create a handsome organ in one of the upstairs windows.

Chair boys, cut out of cardboard by the family, added the final point of interest.

Ten 150-watt projector flood lights and four spotlights and outdoor Christmas lights completed this unusual holiday display.

IMAGINATION can play a great part in every homeowner's outdoor lighting design.



The second prize winner in Beverly Hills chose to make his own cut-out of a toy train with a "Seasons Greeting" message coming out of its smoke stack.

Notice how cleverly the cut-out of a church is silhouetted against the house with the help of 150-watt projector spotlights.

The prize winner began his lighting and decorating design with the conviction that it should fit into the landscaping and design of his house.

His prize-winning theme features lighted candles and multi-colored outdoor lights. Notice how carefully lighting is placed to harmonize both with the architecture of the house, and its landscaping.

Lighted Packages On Your Doorstep

Looking for a new idea for your doorway decoration this Christmas? Here's one that will delight the whole family because they'll have an opportunity to watch how it's put together.

Drape evergreen festooning, entwined with colored bulbs in graceful loops above the door. Hang long sprays of greens topped with bright red plastic bows at each side of the door.

Buy or make a huge red and white plaid stocking and stuff with newspaper which has been rolled into hard balls. Fill the top of the stocking with inexpensive toys.

PLACE TWO huge lighted packages at one side of the entrance step. Here's a tip for an easy way to make these effective lighted packages.

Use the end of an orange crate for the base. Fasten a porcelain socket in the center and insert 60 or 100-watt bulb, depending on the size of the package.

The Birmingham Eclectic
 Section 4
 Thursday, Dec. 8, 1955

Birmingham and its surrounding area is nationally noted for its fine homes, natural beauty and talented residents. All of which indicates it could be a wonderfully decorated community, were these facilities to be gaily festooned with colored bulbs and cheerful Yule ornaments. It truly could be a Christmas Winter Wonderland.

Some of us already have been decking our properties at Christmas season. More of us will be doing it this year. Will you start this season and add your home to the enlarging group? The pictures and articles on this page will give you some basic ideas, on which you can enlarge or alter to your particular desires.

It's not hard—take a look at your home and it'll suggest what can be done easily. You don't have to be elaborate. Start on a small scale, then add to it year by year. Soon you'll have a Christmas ornament that will glitter through the holiday season and thrill you, your family, the neighborhood and the community.

And a happy holiday!

Christmas LIGHTING TIPS

Shopping Column

One of the easiest and most effective ways to light your holiday doorway is with a 150-watt projector spot or floodlight.

Holiday lighting specialists suggest that these weatherproof bulbs can be placed in commercially available and concealed in nearby shrubbery.

Place the units to one side of the door and direct them so that they will "light" your doorway decorations.

WHEN PUTTING up your Christmas lights along roof lines, gables or other out-of-reach spots, here are two tips that will save time.

First, with bulbs in sockets, stretch strings of lights on ground and light them before mounting them on your house. This simple test can reveal burned-out bulbs quickly so they can be replaced before they are placed on the house. Tighten all bulbs firmly in sockets and check wiring and repair any defects or breaks.

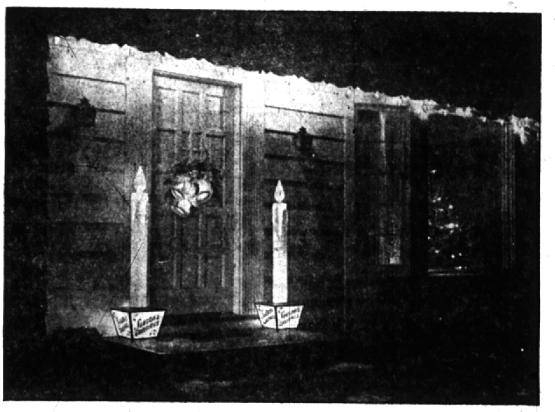
TO SAVE time mount your strings of outdoor lights on tiny brass cup hooks. These can be concealed under eaves, around windows or doorways and left in position year after year. The brass will not rust and, many homeowners who leave them up permanently have them painted along with their house so that they are most inconspicuous.

Insulated staples, found in most hardware stores, are also handy helps in mounting outdoor Christmas lights.

LOOKING for a new idea for your Christmas doorway? Lighting experts suggest easy-to-make evergreen bells with lighted clappers.

Fashion bells from chicken wire. Then, with a string of C-9 outdoor Christmas lights, slip the chicken wire frame over each bell and fasten so that bulbs are positioned like clappers.

Then, cover frames with short sprigs of evergreen until "bells" are solid with greens. Use assorted colored bulbs for your lighted clappers.



ONE SHORT EVENING'S WORK is all that's required to create this home's holiday decorating theme. Ready-made lighted plastic candles, 58 inches tall, a cluster of lighted bells and a string of outdoor multi-colored lights were all of the equipment needed to decorate this newly-built home for its first holidays.

Giant Candles Stand Guard

Looking for a quick way to set all sides of their home? They glow the holiday spirit on your own ing effect is created by a 150-watt (not doo-tee!) Then try a pair weatherproof flood light concealed of large lighted candles that you inside which even light the flame buy completely made and ready to shaped tip with a realistic glow plug into a nearby electrical outlet.

These sturdy plastic candles with reinforced metal frames have their lights suspended from rust-proof own holiday greetings lettered on brass cup hooks, create a gay

lighted frame for the rich red Christmas lights up and your home in its Christmas dress, get out your camera and take a picture of it.

Many amateur box camera fans have taken excellent shots of their lighted decorations by following a few simple tips for best results. Be sure to follow these suggestions carefully.



FIRST, and most important, use a tripod, a good heavy one. Frames of this sort are almost always disappointing if snapshot tripod stands are used. If your tripod is not rigid, slight camera motion might result during the long exposure.

Using Super XX or any of the fast film experts suggest a time exposure of about ten seconds. If you start shooting just after sundown, you will get a considerable amount of detail in buildings and surroundings with the decorative lights lit.

A HALF HOUR after sundown you will still have some glow in the sky and your lighting will be silhouetted against the sky showing up as white, although there will be quite a bit less detail in the foreground.

It is not necessary to quit working up until the time it is actually dark, except that each time it gets completely darker, double and then triple the length of your exposures.

This exposure information is based on the use of a box camera in a camera with a chargeback adjustment set at F/16 or even F/22.

WHENEVER you are in doubt as to the correct exposure for a picture of this sort, always prefer to make the exposure a little longer rather than too short.

If your camera is 500 mm. long, except that each time it gets some heavy object such as a stone fence, your picture will be sharp and clear.

Avoid taking pictures of outdoor lighting when there is a strong breeze because the lights themselves may move and sway and will appear in your picture as streaks rather than points.

For an unusual Christmas card (for next year) save your best negative and have your local photo finisher make your own personal cards from it.

Ready-Made Decorations Save Home Owners Time

If you ever feel just too rushed to put up your outdoor holiday decorations, here's a tip that can save valuable time. When the time is short, merely concentrate your decorating on a large window area and the doorway of your home.

Today's wide selection of ready-made lighted devices, combined with a few strings of outdoor lights and greens, can give your home that special holiday look in minutes.

FIRST STEP in this last-minute decorating plan is to place your window, if possible. This will give your outdoor arrangement additional interest and color.

Then, as shown in the picture above, place a lighted Santa and snowman or other lighted figure on the ground beneath the window in the ground and wire the branches.

These ready-made, weatherproof plastic decorations can be plugged into extension sockets and

spaced 18 inches apart.

TAME THEM together with weatherproof electrical tape and fasten them in place in the usual manner.

Good neighbors often find that by painting their holiday decorations together the result seems more as effective. Stringing lights from one house to another can often make small houses look larger than they are and give a more uniform effect to each decorating design.

Strung in Tufted Effect Lights Give New Texture

If you've been putting up the same old outdoor holiday lights year after year along the same eaves, treat your family to a change this year.

Try tufting your house with lights. It isn't really hard to put outdoor Christmas lights up this new way.

Secret to success is to choose a part of your house with a fairly flat and uncluttered surface. Then, with insulated staples or brass cup hooks, anchor lights in place.

LIGHTING specialists point out that if you're buying new lights this year, be sure to shop for the smaller size, C-7s, strung in outdoor-type sockets. Their smaller size is ideal for the small "button effect" needed for the tufting.

The home in the picture above required two 25-socket and two 15-socket strings for this unusual lighting effect.