

HERE'S LA MEASURES' **SPECIAL!**
WINTER SHIRTS
 Beautifully Laundered
 Finished to Perfection
15¢ EACH
 CASH & CARRY
 WITH ANY \$1.99 DRY CLEANING ORDER

1529 Woodward 1184 Woodward 142 Woodward
 2 blocks south 1st St. 1 block south Lincoln 1 block south Maple
 (Hats by Birmingham Hatter)
LA MEASURE BROS., INC.

INSURED SAVINGS ACCOUNTS
 2 1/2% CURRENT RATE
**SAVINGS RECEIVED BY THE
 10th OF THE MONTH
 EARN FROM THE
 FIRST OF THE MONTH**
**BIRMINGHAM FEDERAL SAVINGS
 AND LOAN ASSOCIATION**
 Woodward at Maple • W. 12-Mile, Berkeley

Want Ads cannot be accepted
 after 5 p.m. each Tuesday

**ARE YOU IN A
 TIZZY?**

They tell us that a bit of good information seasoned with a bit of spice is better than none at all.

So here is a mixture of "TIZZY DISPELLERS" and info.—straight from the chef:—

1. Apply your winter mulch to perennials, roses, etc., AFTER the ground is well-frozen. Use MARSH HAY, STRAW or PEAT MOSS.

2. A TERRA COTTA STRAWBERRY JAR or PLANTER makes a superb gift. They are so good looking you will probably keep it for yourself and send them something else—like a book (of which we have a very interesting selection).

3. Don't smother hollyhocks or foxgloves with a heavy covering. A little brush and a few leaves will be sufficient.

Open up your fireplace ash receptacle and put the contents on the delphinium plants.

4. THE most useful and exceedingly handsome and amazingly inexpensive pottery for flower displaying is the selection of HAEGGER POTTERY we have for your TIZZY PROBLEMS.

It is IN! It is TOPS!

5. Borax and Boric Powder solutions and Calcium Chloride solutions are to be used on Christmas Trees as RETARDERS ONLY—NOT FIRE PROOFING.

Call us for formulae.

The Adams Fire Station has a dipping tank for your use—with rubber gloves available. No Charge.

6. The nicest thing to water your plants with and to give as a gift is an OVAL hand painted or an oval HANDPAINTED watering can. They are humdingers at \$3.69 each—and only \$7.29 for two.

7. Prune your grapevines now and be expert at it. To be expert at it get a PRUNING BOOK and turn to the chapter on "How to Prune Grapevines" and get some good PRUNING SHEARS and GET GOING!

8. The PIE BASKET we are offering at a ridiculous (?) price does not HAVE to be used for pies or cakes. Take the trays out and it is the best shaped picnic basket you ever saw—better than most picnic baskets. Made by Shelton—Sold by us (two home).

9. Protect your young fruit trees and ornamentals from Rabbit Ravage with POULTRY NETTING, HARDWARE CLOTH, TREE WRAP or REPELLENTS.

10. For the few remaining residents who cannot afford a superior bit of meat there is a device which enables you to buy an inferior bit of meat and whack the inferiority out of it with a MEAT WHACKER and anyone but a connoisseur will be delighted to partake thereof. Ah me!

11. Cut away all the canes of black and raspberries which have fruited this year.

12. Build your special garden spot around a piece of STATUARY such as "Wendy", a Sun Dial, a Bird Bath or a Bird Feeder.

EXQUISITE in conception and design!
 DARING in execution! Ahem!

13. AMARYLLIS—the king of the indoor bulbs are in and rarin' to go.

This batch retails for \$3.95 the bulb (plus or minus 18.3c per bloom).

The less expensive bulbs are still on the way.

11. We durst not stop at No. 13—so come in and take a look at our

NYCTEA SCANDIAGA

McCLELLAN-BALL CO.

YARD SUPPLIES FARM KENNEL
 GARDEN BIRMINGHAM, MICHIGAN
 Phone MI 4-4133 159 Brownell St.

**New Jr. Hi Classrooms
 Receive Top Priority**

Derby junior high school, now being built at Derby and Adams roads, is only part of Birmingham school district's present building program. On a site of approximately 22 acres, the school will house 1000 junior high school students, but when future needs demand, 1400 can be accommodated with some modification.

The site was purchased in the fall of 1954 at a cost of \$86,252.20. Because of the pressing need for classroom space, this portion of the school is being built first.

Planned are four science classrooms, eight classrooms each for social studies, mathematics, and language, one audio-visual room, three rooms for homemaking, an art studio and an art laboratory, an instrumental music room, vocal music room, study hall, library, wood and metal shop.

THESE UNITS are scheduled for occupancy by the fall of 1956. In addition, the school also will have a gymnasium and indoor and outdoor type swimming pool.

Non-educational facilities will include administrative offices, health room, work, storage, and toilet rooms, boiler room and kitchen with a cafeteria. The entire plant is scheduled for completion by the end of January, 1957.

Cost of the two-story school building is almost two million dollars (\$1,869,347.00) and will run over that when school furnishings and architect's fees are added.

With 114,000 square feet of space, the building cost per square foot is \$16.65. "The cost per square foot for the Derby junior high compares favorably with figures from other similar structures in the Detroit area," said Richard L. Featherstone, administrative assistant to the superintendent.

THE DESIGNER for the newest school in the Birmingham system is Peter Tarapata and Eberie M. Smith Associates of Detroit is the architectural firm employed by the Birmingham board of education.

General contractor is Steink Wolfe, Inc., Fremont, Ohio; the mechanical contractor, Chelsea Company, Detroit and the electrical contractor, Schultz Electric Company of Pontiac.

Other building plans in the school district now being carried out is an addition to the high school. Eleven more classrooms are being added to the east side of the school.

This is the final anticipated

classroom addition to the high school and will provide for top enrollment of 2000 high school students. This unit, to have been completed this fall, will now be ready sometime in February.

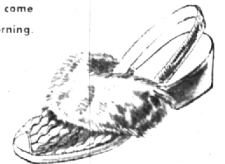
WITH SCHOOL enrollments in the immediate future. Designer for Pembroke school was Lin Smith, head of the architectural firm employed. The cost of the addition is \$193,556, and it is expected that the unit will be completed by fall of 1956.

Another phase in the school district expansion program is a six classroom and kindergarten addition to the Beverly school. This unit, under construction, is scheduled for opening in the fall of 1956.

cozy, comfy slippers



Here are gifts that are odds on favorites to warm the hearts as well as the toes of those who are lucky enough to receive them come Christmas morning.



CHILDREN'S SATIN MULE
 Soft, cozy, warm, \$3.75 in a host of colors \$3.75



WOMEN'S KICKERINO BOOT
 Soft, cozy, warm, \$12.95 in a host of colors \$12.95



BOY'S BROWN LEATHER SLIPPER
 Soft, cozy, warm, \$3.75 in a host of colors \$3.75



WOMEN'S and CHILDREN'S MOCCASIN
 Soft, cozy, warm, \$3.75 in a host of colors \$3.75



CHILDREN'S LEATHER MOCCASIN
 Soft, cozy, warm, \$3.95 in a host of colors \$3.95



COWBOY BOOTS
 Soft, cozy, warm, \$3.75 in a host of colors \$3.75



CHILDREN'S FAUST SLIPPER
 Soft, cozy, warm, \$3.75 in a host of colors \$3.75

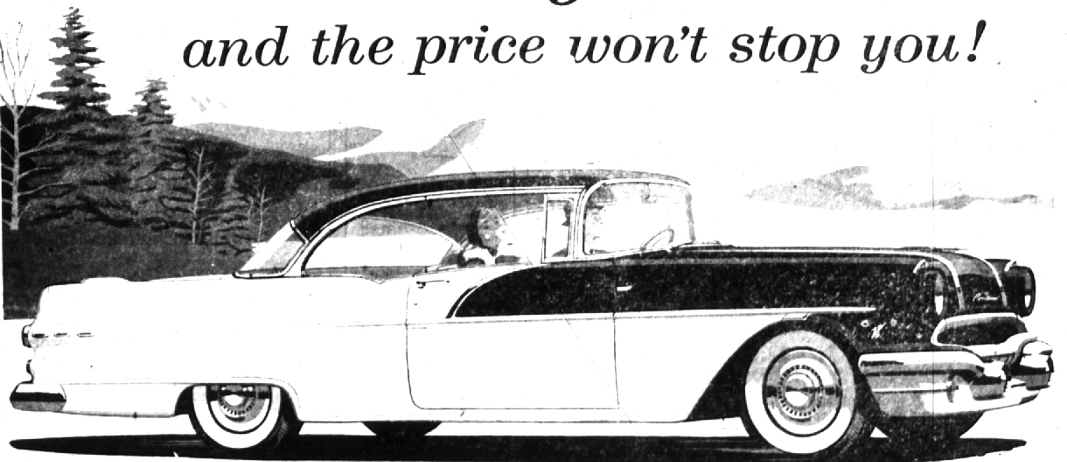
McSweeney's Fine Footwear

277 Pierce St.

All Children's Shoes Carefully Fitted

Phone MI 5-4488

**The car says "GO"
 and the price won't stop you!**



That long and lovely creation shown in action above—glamorous with smartly distinctive car-of-the-future styling and packed with all the terrific "go" suggested by its fleet and flowing lines—is actually a member of Pontiac's lowest-priced series, the value-setting 360 line. And here's what this information means to you!
 Whatever your new-car plans for '56, even if you're shopping at the bottom of the price scale—this big and beautiful mile-brinker can be yours!
 You can now look forward to luxuriating in the gracious comfort and solid roadability made possible by a man-sized 122" wheelbase—just about as long as they come!
 You can now expect to enjoy blazing Strato-

Streak performance from the most modern and efficient V-8 engine that ever powered a car.

You can plan on it, definitely, because there's not a thing to stop you—as the figure on the price tag plainly shows.

For instance, your favorite body style in the 360 series carries a price within a whisper of the cost of the smaller, lighter-powered lowest-priced car. And that's just the start.

We're trading right now to set an all-time record for December. And so when you've heard our deal you may very well discover that there's virtually no difference in price at all!

Come in and confirm that the 360 is the easiest car to name and to buy that ever came your way.

IT'S A FACT—YOU CAN HAVE ALL OF PONTIAC'S BIG-CAR GLAMOUR AND GO FOR LESS THAN THE PRICE OF 44 MODELS OF THE "LOW-PRICED THREE."

'56 **Pontiac**

WILSON PONTIAC-CADILLAC, Inc.

1350 North Woodward Ave.

Phone Midwest 4-1930 and JORDAN 4-6655

PONTIAC PRESENTS PLAYWRIGHTS '56-TV'S FINEST DRAMATIC HOUR—ON NBC-TV, ALTERNATE TUESDAYS