

# Downtown Business Values Rising 10 to 100%



## A Wondrous Plan

Here is a bit of earth's wide, wondrous surface; Upon it homes and trees, a coursing stream, And people—young and old—move o'er this landscape. For here's revealed the pattern of the dream? You see that moon ascending in the heavens? While in the homes you see the lamps are lighted; And can't you hear the merriment in sound? Ah, friend, does not this scene spell out life's goodness? Is not our earth beloved in God's Great Plan? The moon at night reflects sun's warming presence, And Christ shines in our world as perfect Man? We bow our heads and thank our wondrous Maker For earth, for home, for loved ones—And may 'He Whose birth we celebrate this Christmas season Be Friend and Guide—now and eternally!

## Hamilton Parking Lot Cost Set at \$208,200

Parking facilities for 189 cars off Hamilton avenue have received tentative approval of Birmingham city commissioners. Monday night they ordered City Manager D. C. Egbert to proceed with plans for a \$208,200 lot for 169 cars on the north side of Hamilton, and attempt to lease property for a 29-car lot on the south side immediately behind the Woodward frontage.

He also was asked to negotiate a pedestrian walkway from Hamilton to East Maple.

**BUSINESSMAN** Sam Bruni, seconded by City Assessor Elmer Haack who owns some Maple property, called upon officials to put a lot immediately behind the Maple business.

"If you don't," Bruni charged, "you'll cause all of Hamilton to build up and thus have no place in which to serve Maple business parking needs. This will mean Maple business will deteriorate and that doesn't have to happen."

Egbert said the larger lot would cost \$150,000, with development to add another \$150,000. Its terrain lends itself excellently to parking garages, the manager emphasized.

**HE CAUTIONED** against leasing the south lot without an open bid.

**INSIDE THE ECCENTRIC**  
PHOTO PAGE:  
Section 3, Page 1  
Maples Beat M. Clemens, Southfield  
Section 5, Page 6  
Bloomfield Weddings  
Highlight Holiday Season  
Section 2, Page 1  
Southfield Petitions for City Below 12 1/2 Mile  
Section 5, Page 1  
Candlelight and Carols  
Observe Yule in Area Churches  
Section 4, Page 6

**AMUSEMENTS**  
Bits of Birmingham  
Church  
Correspondents:  
Berkshire  
Bloomfield/Village  
East Beverly  
Franklin  
Gilbert Lake  
Graefield/Horley  
Ladrop Village  
North Adams  
Valley Woods  
Walnut Lake  
West Beverly  
Wing Lake/Foxcroft  
Down to Earth  
Nature Now  
Obituaries  
Round the Towns  
School  
Society  
Sports  
Television  
Theaters  
Want Ads

Amusements	3	1
Bits of Birmingham	5	5
Church	4	6,7
Correspondents:		
Berkshire	5	3
Bloomfield/Village	4	2,2
East Beverly	5	5,8
Franklin	5	3
Gilbert Lake	5	3
Graefield/Horley	5	3
Ladrop Village	5	3
North Adams	5	5
Valley Woods	5	5
Walnut Lake	5	5
West Beverly	5	5
Wing Lake/Foxcroft	5	5
Down to Earth	4	1
Nature Now	4	1
Obituaries	1	8
Round the Towns	5	1
School	2	3,5,6
Society	2,3,1,5,6	
Sports	6,7	
Television	1	2
Theaters	1	2
Want Ads	1	6,7

## Use of Detroit Water May Mean 50% Rate Boost

As much as a 50 per cent increase in Birmingham water rates may be necessary when the city next summer gets ready to use water from the city of Detroit via the South Oakland county water authority distribution system, now under construction. City Manager D. C. Egbert made this "worst case" estimate this week as commissioners discussed the advisability of building a \$12 million water treatment plant on Southfield above 14 Mile road.

## City, Twp. Officials Fill Posts

**TROY**—New officials are now in office in both city and township governments, and with the appointment Tuesday night of Stephen B. Hill as township treasurer, both governments have the officials needed to carry out normal business activities.

Township Attorney Archie Leonard ruled Tuesday that Fred W. Hildebrandt, who now lives within the new city, was not eligible to retain that post. Hildebrandt has been named deputy treasurer until the March 1 tax deadline has been met, said Norman R. Barnard, city manager who is township supervisor.

**FRIDAY**, Charter Commission Secretary Clerk Clifton Truesdell administered oaths of office to Mayor Frank Costello, Commissioners Ernest Gray, Roy Duncan, George Ford, Elmer Lowe, Donald Lance and George Yeakum, and Justices of the Peace Charles Looney and Ceville Mason.

Barnard, charter commission chairman, presented the new mayor with a gavel carved by the Manual Training class of Troy High School. Inscribed on the gavel made from the first house built in Troy in 1821, were the words, "First Mayor Frank Costello."

George Ford was named Mayor pro tem by the board who appointed Donald Lance temporary secretary. Donald A. Melchert was selected for the assessor's post, and Barnard, in addition to his manager's position was named city clerk.

**LAST WEEK** resignations of township trustees George Ford and Elmer Lowe were filed by appointment of Leonard Fandale, and Claude Farmer, Gerald E. Ellice is the new township clerk.

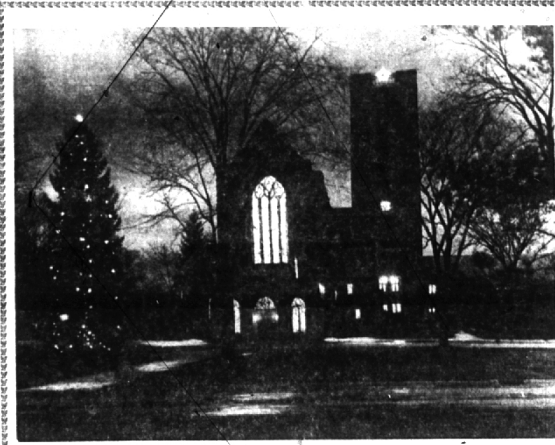
Lyle Walker was named supervisor of the widely-scattered township which now contains less than 500 people, according to Barnard. One of the first considerations of the new township board is annexation of its small islands of land to the new city.

**STILL** needed in Troy's city government are an attorney and a clerk.

Barnard, operating out of what is now the City Township Municipal Building, as his first duty, was to arrange with Oakland County road commission a program which will continue to bring road service to Troy on a general basis.

Regular meetings for the city commission will be the second and fourth Mondays of each month.

**TROY CITY OFFICIALS** were sworn into office Friday night at the Troy town hall. From left: Mayor Frank Costello, councilmen Roy L. Duncan, George W. Ford, Ernest Gray, George Y. Yeakum, Elmer W. Lowe, and Donald C. Lance; associate justice Ceville H. Mason and presiding justice Charles H. Losey.



## A Christmas Wish

I like to think that there will be  
On Christmas Day, around each tree,  
A feeling of the presence of  
The Child God sent us with His love;  
That there, beside each girl and boy,  
He'll be, and sharing in their joy.

And know it's for the thanks we bring  
To God the Father, for His birth,  
To be among us on the Earth.

May our Christmas time be gay;  
But let's remember it's His Day—  
Let's find a place for prayer in it,  
And also have Jesus share in it.

—Carl Helm

## W. Maple Frontage Up 40%

By GEORGE WM. AVERILL

Appreciable increases in all downtown Birmingham business property values will be reflected in 1956 tax rates. City Assessor Elmer W. Haack reported this week to the city commission.

He said his figures were "concentrated" and were generally based on the basis of property values in the past 12 months.

In one instance, valuations will be up 100 per cent. This is along the south side of Brown street, where the recently opened municipal parking lot to the north has caused considerable sales interest in adjoining business properties.

Other increases range from 10 to 45 per cent.

"We have had considerable sale of business properties, which have been scattered well enough to represent all types and areas of business," Haack emphasized.

**HE SAID** his new figures will be about one-third of actual average cash value, a point at which his department values will be in line with all city property values. All these figures are subject to some revision because of exact location, alley, etc. he stressed.

High point still is the West Maple frontage between Bates and Woodward, which Haack plans to value at \$500 per front foot. Last year's valuation was \$300 average.

Here are other important valuations that revisits the assessor plans to make.

(The larger sum is the proposed valuation; the lesser amount is present valuation per front foot.)

**ALONG E. Maple**, from the corner of Woodward (\$220-\$180) east to the corner of Hunter (\$150-\$125), rate of \$100 per front foot. (\$80) eastward to Adams (\$30-\$50); east N. Woodward, Maple corner (\$100-\$50) to Oakland corner (\$200-\$120).

**ALONG S. Woodward**, Maple corner (\$250-\$200), Merrill corner (\$200-\$250), Merrill corner (\$250-\$200), south to Daines (See VALUES, Page 8, Sec. 1).

**STRICTLY FRESH**  
There's one firm that has found that the automobile is a horse of color. It's the horse of color of the Colgate Company, once the world's largest manufacturer of horse collars. It's the horse of color of a liquidation sale.

Hong Kong newspaper has suggested that meteorologists name big tropical storms after hurricanes. OK? Those who insist on naming mostly of hot air, we presume.

Washington, D. C. dairy expert says that when a cow corks her milk, she's milking. Follow Keros on, also.

## Large Group of Santa Letters

Busiest person in the world right now is the children's idol, Santa Claus.

He has only today, tomorrow and Saturday in which to finish up his toy-making and get his sleigh packed for his Christmas Eve trip around the world.

Yet it is not too late for the joyful old gentleman to read his Eccentric today, and make note of the Yule desires of Birmingham children whose letters to him follow in the final 1955 installment.

**My baby** has been looking for a letter from Santa Claus. I have written him many letters but he never writes back. I have written him many letters but he never writes back. I have written him many letters but he never writes back.

**Dear Santa**, I want a bicycle that I would like a horse and some of the tractor are all good. I would like anything you would send me even a little toy. I have a new baby brother who would like for me to buy him a doll. We will have the first of December. We have no money. I love you.

**Dear Santa**, I want a bicycle that I would like a horse and some of the tractor are all good. I would like anything you would send me even a little toy. I have a new baby brother who would like for me to buy him a doll. We will have the first of December. We have no money. I love you.

**Dear Santa**, I want a bicycle that I would like a horse and some of the tractor are all good. I would like anything you would send me even a little toy. I have a new baby brother who would like for me to buy him a doll. We will have the first of December. We have no money. I love you.

**Dear Santa**, I want a bicycle that I would like a horse and some of the tractor are all good. I would like anything you would send me even a little toy. I have a new baby brother who would like for me to buy him a doll. We will have the first of December. We have no money. I love you.

**Dear Santa**, I want a bicycle that I would like a horse and some of the tractor are all good. I would like anything you would send me even a little toy. I have a new baby brother who would like for me to buy him a doll. We will have the first of December. We have no money. I love you.

**Dear Santa**, I want a bicycle that I would like a horse and some of the tractor are all good. I would like anything you would send me even a little toy. I have a new baby brother who would like for me to buy him a doll. We will have the first of December. We have no money. I love you.

**Dear Santa**, I want a bicycle that I would like a horse and some of the tractor are all good. I would like anything you would send me even a little toy. I have a new baby brother who would like for me to buy him a doll. We will have the first of December. We have no money. I love you.

## W. Maple Frontage Up 40%

By GEORGE WM. AVERILL

Appreciable increases in all downtown Birmingham business property values will be reflected in 1956 tax rates. City Assessor Elmer W. Haack reported this week to the city commission.

He said his figures were "concentrated" and were generally based on the basis of property values in the past 12 months.

In one instance, valuations will be up 100 per cent. This is along the south side of Brown street, where the recently opened municipal parking lot to the north has caused considerable sales interest in adjoining business properties.

Other increases range from 10 to 45 per cent.

"We have had considerable sale of business properties, which have been scattered well enough to represent all types and areas of business," Haack emphasized.

**HE SAID** his new figures will be about one-third of actual average cash value, a point at which his department values will be in line with all city property values. All these figures are subject to some revision because of exact location, alley, etc. he stressed.

High point still is the West Maple frontage between Bates and Woodward, which Haack plans to value at \$500 per front foot. Last year's valuation was \$300 average.

Here are other important valuations that revisits the assessor plans to make.

(The larger sum is the proposed valuation; the lesser amount is present valuation per front foot.)

**ALONG E. Maple**, from the corner of Woodward (\$220-\$180) east to the corner of Hunter (\$150-\$125), rate of \$100 per front foot. (\$80) eastward to Adams (\$30-\$50); east N. Woodward, Maple corner (\$100-\$50) to Oakland corner (\$200-\$120).

**ALONG S. Woodward**, Maple corner (\$250-\$200), Merrill corner (\$200-\$250), Merrill corner (\$250-\$200), south to Daines (See VALUES, Page 8, Sec. 1).

**STRICTLY FRESH**  
There's one firm that has found that the automobile is a horse of color. It's the horse of color of the Colgate Company, once the world's largest manufacturer of horse collars. It's the horse of color of a liquidation sale.

Hong Kong newspaper has suggested that meteorologists name big tropical storms after hurricanes. OK? Those who insist on naming mostly of hot air, we presume.

Washington, D. C. dairy expert says that when a cow corks her milk, she's milking. Follow Keros on, also.

**ALONG E. Maple**, from the corner of Woodward (\$220-\$180) east to the corner of Hunter (\$150-\$125), rate of \$100 per front foot. (\$80) eastward to Adams (\$30-\$50); east N. Woodward, Maple corner (\$100-\$50) to Oakland corner (\$200-\$120).

**ALONG S. Woodward**, Maple corner (\$250-\$200), Merrill corner (\$200-\$250), Merrill corner (\$250-\$200), south to Daines (See VALUES, Page 8, Sec. 1).

**STRICTLY FRESH**  
There's one firm that has found that the automobile is a horse of color. It's the horse of color of the Colgate Company, once the world's largest manufacturer of horse collars. It's the horse of color of a liquidation sale.

Hong Kong newspaper has suggested that meteorologists name big tropical storms after hurricanes. OK? Those who insist on naming mostly of hot air, we presume.

Washington, D. C. dairy expert says that when a cow corks her milk, she's milking. Follow Keros on, also.

**ALONG E. Maple**, from the corner of Woodward (\$220-\$180) east to the corner of Hunter (\$150-\$125), rate of \$100 per front foot. (\$80) eastward to Adams (\$30-\$50); east N. Woodward, Maple corner (\$100-\$50) to Oakland corner (\$200-\$120).

**ALONG S. Woodward**, Maple corner (\$250-\$200), Merrill corner (\$200-\$250), Merrill corner (\$250-\$200), south to Daines (See VALUES, Page 8, Sec. 1).

**STRICTLY FRESH**  
There's one firm that has found that the automobile is a horse of color. It's the horse of color of the Colgate Company, once the world's largest manufacturer of horse collars. It's the horse of color of a liquidation sale.

Hong Kong newspaper has suggested that meteorologists name big tropical storms after hurricanes. OK? Those who insist on naming mostly of hot air, we presume.

Washington, D. C. dairy expert says that when a cow corks her milk, she's milking. Follow Keros on, also.

## Coming Week's TV Schedules

On Page 2  
This Section

## City's New Assessor Named by Commission

Walter E. Taylor, 36, who for the past 22 years has been city assessor of Birmingham, has been named by the city commission as the city's new assessor.

Taylor, who has been in Birmingham for the past 22 years, has been named by the city commission as the city's new assessor.

Taylor, who has been in Birmingham for the past 22 years, has been named by the city commission as the city's new assessor.

Taylor, who has been in Birmingham for the past 22 years, has been named by the city commission as the city's new assessor.

Taylor, who has been in Birmingham for the past 22 years, has been named by the city commission as the city's new assessor.

Taylor, who has been in Birmingham for the past 22 years, has been named by the city commission as the city's new assessor.

## FOR THE NEXT TWO WEEKS

The Birmingham Eccentric's work will also be in the Christmas and New Year's holidays are observed on Monday.

We'd appreciate your assistance in getting copy in early for these next two issues.

100 copies of issue spring mattress. All other items. ROYAL MAT. \$1.00. All other items. Dual "G" and ask for Enterprise 8218.