

MSU's Doubling in Ten Years Is Panel Topic Here Tuesday

Doubling of Michigan State University's present enrollment of almost 18,000 within the next ten years, and its attendant problems, will be discussed in panel before local alumni next Tuesday night.

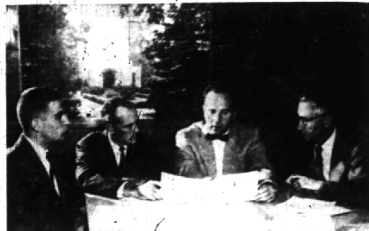
Four Michigan State spokesmen will outline how the university expects to accommodate 40,000 students by 1965 in the program at 8 p.m. Tuesday at the Community House. The program is sponsored by the MSU Alumni club of Oakland county.

THE FOUR PANELISTS are: **PROF. HAROLD W. LAUTNER**, head of the department of landscape architecture and urban planning, who will show slides and reveal MSU's plans for expanding its physical plant, plus the financing program.

HERBERT N. STOUTENBERG, assistant registrar in charge of admissions, who will tell whether or not Michigan State plans to limit enrollments as has been announced at the University of Michigan.

THOUGH STARTLING, the effect from blueprints will be typical of those necessary across the nation if the United States is to provide a higher education for all its eligible young people.

Richard Ernst, of Birmingham, president of the alumni club, will preside at the panel meeting, which is open to the public.



PANEL TALK on MSU's doubling will be by (from left) Ward Ouradnik, Dr. E. A. Carlin, Herbert Stoutenberg, and Prof. H. W. Lautner.

Model Railroaders To Hold Election

South Oakland County Model Railroad club will hold its third annual meeting in the club quarters at the Grand Trunk railroad station, Birmingham, Dec. 2 at 8 p.m.

There will be an election of officers who will take office in January.

Slides on the history of the Denver and Salt Lake railroad will be shown by Fred Bauer, Detroit Model Railroad club member and ardent Colorado railroad historian.

REFRESHMENTS and coffee will be served.

All persons interested in model railroading have been invited by the group to attend the meeting.

Are you thinking of buying a new home? Then read the "For Sale - Houses" columns on the Classified Ad page of this week's Eccentric.

Kirbert's Friends Pay Him Tribute

In tribute to his outstanding accomplishments in the field of community service, nearly 100 local citizens gathered at a testimonial dinner to honor Edwin F. Kirbert, Tuesday evening, Nov. 22. Kirbert has been the executive secretary of the YMCA here since 1946.

The dinner was held at the Birmingham Community House and was sponsored by Birmingham Kiwanis club. It was the third in the Kiwanis series of "Flowers to the Living" programs, and was highlighted by numerous speakers who paid tribute to a man who has made many contributions to the welfare of the community in several fields of endeavor.

C. E. NICHOLS, president of the Birmingham Kiwanis, introduced Stuart Skelly of the local Toastmaster's club who served as master of ceremonies.

TESTIMONY pointed out that Kirbert has been unusually active in numerous community activities over and above those which fall in his normal duties as head of the YMCA.

Youth work occupies much of his time and his organizational and continuing efforts in behalf of the Birmingham Council of Churches was especially pointed up by Rev. Robert S. Graham, associate pastor of the First Presbyterian church, one of the speakers.

Graham stated in the past that he has "stood in the gap" for many citizens in his efforts.

Speakers besides Graham included Del Ingraham, chairman of the youth committee of the local YMCA; Victor Peck of the Rotary Club; Harold Kalbfleisch, Lions Club; William E. Roberts, representative of the city commission; and Lynn Russell of Birmingham, who is the associate general secretary of the Detroit YMCA of which the Birmingham "Y" is a branch.



ED KIRBERT (right) receives a gift from his many friends, presented by Kiwanis District 5 Lt. Gov.-Eliot Dick Scribner. (Joe Wheeler Photo)

DICK SCHIMMER of the Don attachments, the Kiwanis club and governor of the district of Michigan International District, shared in much of the praise that was bestowed upon Kirbert, on behalf of the local Kiwanis her husband and was given a large banquet, a camera with numerous corsage by the Kiwanians.

Gift Guide

Wide selections of wonderful Christmas Gifts are awaiting your approval in Birmingham, where a friendly, sincere group of sales folk are most interested in making your shopping task pleasant and profitable. You are always ahead when you shop in this complete shopping center and every effort has been made to prove it this Christmas.

Delightful Gifts

For Everyone on Your List Can Be Found in These FRIENDLY BIRMINGHAM STORES



WILLIAMS BOOT SHOP
115 W. Maple

HOUSE SLIPPERS
for Men, Women and Children

Consider house slippers for those on your list this Christmas. They have been among the most appreciated of gifts for years, and this Christmas will be no exception.

RB SHOPS
142 West Maple

BEAUTIFULLY BOXED JEWELRY by Coro
\$1.00 and \$1.98

MILLER SHOES
Woodward at East Maple

Best for Him—
Let Him Choose His Favorite Style!

Nunn-Bush Shoes
\$19.95 to \$25.95

DICKINSON'S
WABBEK BUILDING

Imported Rayella
PLAID ROBES

Rayella is fashioned from fine all spun imported rayon yarns.

- Guaranteed Washable
- Completely Colorfast
- Resists Wrinkles
- Long Wearing
- Iron as you would any fine fabric

\$10.95

KRESGE'S
WEST MAPLE AT BIRNHEITTA

Big Doll Stroller
1.98

Decorated with animal and nursery figures. Holds a large doll. Easy to handle.

WILSON DRUG CO.
Woodward and Maple

GIBSON CHRISTMAS CARDS
"Buy the Box"
Carrier & Ives
Winter Scenes
14 for \$1.00

Many other card assortments for your selection.

Borg Bathroom Scales
1955 Models 25% Off

\$11.95 Model Now \$8.95
7.95 Model Now \$5.95

MILLS PHARMACY
1710 W. Maple at Chesterfield Ph. MI 4-5060

The Birmingham Hardware
152 N. Woodward MI 4-7524

Sunbeam
CONTROLLED HEAT
Automatic FRYPAN

For perfect cooking and frying. Available in 3 sizes 10", 12" & 14".

\$19.95 - \$23.95 - \$26.95

MORTIMER'S MEN'S WEAR
130 West Maple
EXCLUSIVE IN BIRMINGHAM
VIYELLA.

State of Maine ROBES \$29.95
Hathaway SPORT SHIRTS, Plain colors \$12.50
Plaids Priced \$15.95 & \$16.95
VIYELLA HOSE \$1.50 & \$1.75

The F. J. MULHOLLAND CO.
233 North Woodward

FRIDAY NIGHT ONLY

OUR ENTIRE STOCK OF CHILDREN'S
SNOW SUITS . . . 20% OFF

IDEAL CHRISTMAS GIFTS

BIRMINGHAM CAMERA SHOP
168 S. Woodward Established 1938

There is a Photographic Gift for Everyone.

See Our Complete Selections on
MEN'S NIGHT—
MONDAY, DEC. 5-7 to 10

SET OF 4 GLASS LINED
STERLING SILVER
SALT and PEPPERS

A Truly Beautiful Gift \$5.75 Tax Incl.

LAKE Jewelers
69 W. Maple Ph. MI 4-5315

Make This a Merle Norman Christmas!

HAND-MADE EARRINGS
mushroom coral — feather design — petal style

MERLE NORMAN
COSMETICS

233 E. Maple Avenue Birmingham, Michigan

Don't miss out! So that we will be able to fill your request by Christmas—

ORDER UNFINISHED FURNITURE NOW!

BIRMINGHAM PAINT
Glass & Wallpaper Co.

335 E. Maple MI 4-3737

14-Piece Glass PUNCH BOWL SET

Bowl, 12Cups, Crystal Plastic Ladle ALL FOR \$3.79

HUSTON HARDWARE CO.
205 N. Woodward MI 4-7330

Pre-Holiday Clearance!

1/2 and more OFF!

NAN'S HAT SHOPPE
145 N. Woodward MI 4-2112

VICTORIAN PARLOR
where you will find a collection of sumptuous brocades, satins, silks, laces and velvets in dresses and separates of an elegant nature for parties, balls, and festivities of the holiday season.

Village Store
205 Pierce St. Birmingham

FOR "HIM AND HER"

100% Imported Wool
CREW NECK SWEATERS
\$9.95

Peck's Men's Wear
108 S. Woodward MI 4-7724

17-Jewel
GENT'S WATCH
Waterproof—Shockproof
Expansion Band
\$14.95

GEORGE ROSS
Jewelers
244 E. Maple MI 4-8215

SNACK SETS
Quaker Maid \$15.95

Perfect for Entertaining

- Polished Brass Legs
- Beautiful Black Tray Design
- 4 Tables and Rack

LEWIS
Fine Furniture
235 Pierce, Birmingham