

SERMONETTE

Life Is Eternal; There Is No Death

By FRANK GLABACH, Unity Center Leader

Jesus said, "If a man keep My saying, he shall never see death," which is just another way of His saying, "Judge not by appearances." Death is an "appearance" which suggests that life is ended but it is not so. And whenever we give credence to this appearance and say, "He is dead," about any one, then we're not believing in the Way the Truth and the Life. Then we're not knowing the truth behind the appearance. Jesus cautioned us to judge not by appearances, because appearances tend to mislead us and cause us to judge what we see erratically. They lead us to believe that which is not true. This applies specifically to this shadow that we call "death."

WHEN YOU stop to think it through, no man has ever seen birth. That is, in the sense that he bears witness to the emergence of the spirit of life into a physical form.

He is aware of an objective phenomena and he labels it birth, but he does not really see birth. He sees evidence of life having emerged into form. Similarly, no man has ever seen death. That is, he does not bear witness to how this life spirit which at some time before entered into the physical form now appears to leave it.

HE IS AWARE of an objective phenomena by which the form is left without the energy of life. But what has happened to the life that did abide there, he knows not. He labels the phenomena death, but he does not really see death. He is merely a bystander to what must be to him a mystery of the spiritual processes of life. Death, like birth, is merely a change of life's form. Jesus told us, figuratively, "The wind bloweth where it will. You can hear its sound, but you never know where it has come from or where it goes. It is the same with one who is born of the spirit."

CANT WE begin to appreciate

how wonderful life's processes really are?

We are all born of the spirit and like the wind we emerge into form and later depart from it. Those who are with us while we are here, hear our sound but they do not know where we have come from or where we go. The wind does not die and neither does the spirit of life that is the only truth of you. Life is eternal. You are eternal. There is no death.

Embury WSCS Has Busy Week Coming

Two activities will occupy members of Embury Methodist church WSCS next week.

The first will be their 8 p.m. meeting on April 12 at the church. Mrs. Floyd Crouse will preside the program.

Mrs. Ruth Norton is in charge of devotions, while Mrs. Jack Gibson and Mrs. William Ward are hostesses.

The society is holding its annual spring rummage sale at the church, East 14 Mile and Croft, on April 15. Mrs. Foster Raymond and Mrs. Archie Livingston are co-chairmen.

Methodists Honor Basketball Team

"Dear Old Golden Rule Days" will be the theme of the Youth Night supper when young people and their parents gather at First Methodist church at 6:30 p.m., April 11.

Trophies will be presented members of the victorious Methodist basketball team by Ed Kirbert, YMCA secretary.

Speeches, songs and games will conclude the program.

Northminster Men Organize New Club

Men of the newly formed Northminster Presbyterian church have organized their club and elected M. P. Leimbach, president; D. J. Watson, vice president; C. W. Lankton, secretary, and Gene Pritchard, treasurer. Ernest P. Mobbs, Detroit, a leader in men's club activities in the church, spoke.

St. Columban Group Plans Bridge Party

Plans for a telephone bridge will highlight the April 12 meeting of St. Columban's Sodality of Our Lady. The group meets at the Birmingham Community House. Mrs. Bernard T. Lourim of Holy Name church will explain the planning and operation of this type of entertainment. Mrs. John Duffy will chairmen the party.

Reports from delegates to the annual Day convention in Detroit March 31 will be given.

Pastor to Address Board of Auxiliaries

The board of the Woman's Auxiliary, St. James Episcopal church, will open their April 13 meeting at 10 a.m. A communion service is planned for 12:15 with lunch at 1 p.m.

The new rector, the Rev. W. Eugene Snook will speak at the afternoon session. Members of St. Agnes guild will hold a sale of baked goods.

Clibe Meet

The Nellie Clibe guild of the First Presbyterian church will meet at 12:30 p.m. for luncheon at the church on April 13. Devotions will be given by Mrs. George Burham. Mrs. F. E. Woolfenden has chosen the title "Under Three Flags" for her afternoon program.

Serves on Committee

John Wall, 2073 Kenway, has been named to the building committee for the Fernalde Seventh-Day Adventist church, the pastor, W. O. Neff reveals. He will, in addition, serve on the special finance committee that has been appointed.



AMONG THE 80 children who presented "The Builder" at the First Methodist church Palm Sunday evening service were Jill Conlan, John Dove and Pamela Corneli, flower girls and candlelighter. A new work, "The Builder" is especially written for children but on a plane enjoyable to adults as well. It is the musical telling of the Last Supper, Crucifixion and Resurrection. (Eccentric Photo)

PECK'S
Cash and Carry
Plain Dresses, Suits, Topcoats \$1.59
CLEANED and PRESERVED
For Delivery PHONE MI 4-7724
Service WOODWARD—NEAR MAPLE

Use this page to keep every member of your church and its several organizations fully informed on what is going on. News items and pictures are needed to make the Church Page a valuable instrument. Early copy for church activities makes it better for us and better for you. Don't wait until the deadline, please.



SMILING, PACKED AND READY for that trip to New York City are (left to right) Meredith Metcalf, Herb Busch, Peggy Bensinger, John Kerley, Jim McDonald and Art Weeber. Two not pictured but who will make the trip are Jeff Westdale and Joyce Nielson. The youngsters, members of the Congregational church Youth Fellowship, will leave here April 11 for a four-day trip in the Big Town. They will visit many places of interest including church missions for persons entering and leaving this country. Congregational headquarters and other spots. Four adults, including the Rev. and Mrs. Robert Dewey, will accompany them. (Eccentric Photo)

LOWEST-PRICE CAR

IN THE LOW-PRICE 3 TO GIVE YOU ALL THIS IS PLYMOUTH!

<p>TOP SIX</p> <p>The <i>thriftiest, smoothest</i> six in the low-price 3—that's Plymouth's PowerFlow 117! Its high compression ratio, combined with exclusive Chrome-Sealed Action; gives you more power from less gas, and velvet-smooth performance. You'll enjoy lightning acceleration, thanks to a special metering system in the carburetor. And Plymouth's Power-Flow engine thrives on regular fuel.</p>	<p>TOP SIZE</p> <p>The <i>biggest, longest, roomiest</i> car of the low-price 3—that's Plymouth! Brilliant new <i>Forward Look</i> styling gives you more glamor outside, more luxury inside; plus the new Full-View windshield, swept back to give the greatest visibility in the low-price 3. And Plymouth's big size means you and your passengers will enjoy the smooth, steady ride that only a truly big car can give you.</p>	<p>TOP VALUE</p> <p>Plymouth is the only low-price car to give you at no extra cost such extra value features as: electric windshield wipers, Safety-Rim wheels and an independent parking brake for greater safety... Oriflow shock absorbers for a smoother ride... an Oilite fuel filter and oil bath air cleaner for lasting economy. See and drive a Plymouth today—see why it's your best-buy low-price car!</p>	<p>WHY PAY UP TO \$500 MORE FOR A CAR SMALLER THAN PLYMOUTH?</p> <p>Don't be fooled by the claims of so-called medium-price cars that they cost practically the same as Plymouth. When you compare price tags you'll find that, <i>model for model</i>, the 1955 Plymouth sells for much, much less than medium-price cars, and gives you more car for your money!</p>
--	---	---	---

BEST BUY NEW; BETTER TRADE-IN, TOO



Actual photo of the Plymouth Belvedere Club Sedan. Ask your Plymouth dealer for the low price on this and twenty-one other smart Plymouth models.

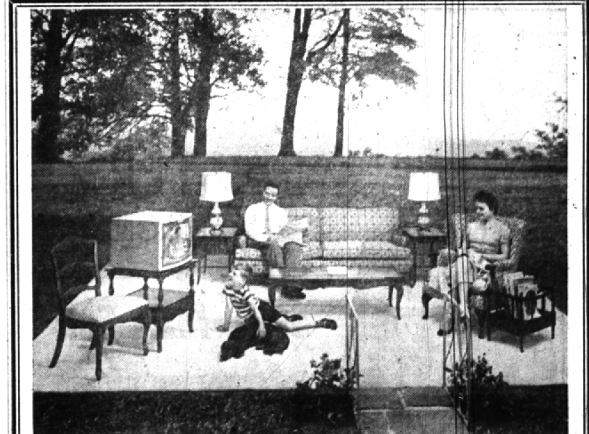


ALL-NEW PLYMOUTH

SEE "PLYMOUTH NEWS CARAVAN" WITH JOHN CAMERON SWAYZE!
Enjoy "SHOWER OF STARS" and "CLIMAX" on CBS-TV
Plymouth dealers are listed in your Classified Telephone Directory.

PRESBYTERIAN
The Kirk in the Hills
1340 West Long Lake Road
BLOOMFIELD HILLS
Dr. Harold C. DeWind
A Matter of Life and Death
Identical Services
9:30 and 11:00 A.M.
Church School 9:30 & 11

Northminster Presbyterian Church
Easter Sunday Services
10:30 A.M.
Poppleton School Auditorium
Crooks and Big Beaver Roads
Rev. MACKAY TAYLOR, Pastor



Ask us how to put the house in the picture

Like millions of other Americans, you may be dreaming of building your own home. Maybe you've even picked out a site like this—complete with a broad lawn, pleasant trees and a hilltop view. In short, maybe you've got everything—except the money for the house itself! If so, now's the time to consult an Insured Savings and Loan Association. Whether you're building your own home, or buying one that's already built, these Associations can be of tremendous help to you. They really know homes and home-financing. They make liberal loans. They see to it that you get the money quickly and at moderate rates. And you'll find them sound, friendly and understanding people to do business with. No wonder more Americans go to insured Savings and Loan Associations for home mortgages than anywhere else! Of course, your association is far more than just the "home" of home loans. It's also a wonderful place to put your savings. When you open a savings account you get all the advantages of excellent returns... plus friendly and convenient service. And your savings are safe. They are protected by sound management and substantial reserves. They are insured up to \$10,000 by the Federal Savings and Loan Insurance Corporation—an agency of the U. S. Government. For a home loan or to open a savings account, why not drop in at the nearest insured Savings and Loan Association? You'll be glad you did!

Member of the Savings and Loan Foundation, Inc., sponsor of this advertisement in LIFE, SAT. EVE. POST and TIME

BIRMINGHAM FEDERAL SAVINGS AND LOAN ASSOCIATION

• Insured Savings • Home Loans

Woodward at Maple Berkley Branch: 3055 W. 12 Mile Rd.