

Palsy Expert Sets Clinic

Parents of cerebral palsied children wishing to learn proper treatment of their children are invited to the May 23 and 24 clinic stated by a leading specialist.

Dr. Mezey A. Prinstein of Chicago, who is one of the country's palsy specialists, will conduct a diagnostic clinic, free for all parents from 9 a.m. until 4 p.m., according to the sponsors, the Oakland County Society for Crippled Children.

The clinic will be in Stevens hall of All Saints Episcopal church, Pontiac.

The society, which is the Easter Seal agency, is cooperating with the Michigan Society for Crippled Children and Disabled Adults in sponsorship.

ANY OAKLAND COUNTY child is welcome, with request or referral from their family doctor for examination and by appointment only. Applications are being taken at the society headquarters, 152 West Lawrence street, Pontiac, until May 15.

Dr. Prinstein is a member of several national cerebral palsy organizations and is consultant on the subject at University of Illinois. He heads two medical committees, one for a Chicago hospital's cerebral palsy therapeutic surgery and for the medical board of the Illinois hospital school.



buy **2** PALM BEACH suits at \$39⁹⁵ each



have **4** smart, cool summer outfits



Smart and thrifty, this idea of buying two color-coordinated Palm Beach suits... mixing or matching coats and trousers... having four handsomely tailored, wrinkle-resistant summer outfits. And our tremendous selection offers you a host of attractive color combinations. Come choose your two Palm Beach suits, today!

Palm Beach Luxury Lined \$39⁹⁵

*Reg. T.M. Goodall Sashford, Inc. Made in U.S.A. from finest and best wool, in most styles.

DICKINSON'S
Waback Building
Birmingham
Saginaw at Lawrence
Pontiac



SUZANNE JONES

Tell Truth Of S. Jones

Mr. and Mrs. Blythe R. Jones, 863 Southfield, announce the engagement of their daughter, Suzanne, to Ensign John Mulligan, son of Mr. and Mrs. Forrest Mulligan of Cloverville, New York.

The wedding will take place early next year. The bride-elect will graduate in February from the University of Illinois, where she is majoring in languages. She is a member of Alpha Iota sorority.

Mulligan graduated in 1954 from the University of Illinois, where he was affiliated with Theta Chi fraternity. He is now with the Naval Air Force and is stationed at Pensacola, Florida.

Have You Met

The residents of 16179 Reedmers? Mr. and Mrs. Maurice R. Hooper and their three children: Margaret, 7, Betsy, 5, and Janet, 3, moved here recently from Oak Park Hooper is a sales representative for Chicago Peabody String Co. Members of the Episcopal church, the Hoopers' affiliations are Phi Kappa Psi and Kappa Kappa Gamma.

NATURE NOW

Soft Pastels, Fragrances Mark Spring

By LYDIA KING FRETSE
Special Writer for The Birmingham Eccentric

Now in early springtime, nature bedecks herself with all her bridal finery; her softest pastels, her finest textures, her most elusive fragrances.

Of all this beauty, flowers are the essence. Do not look for showy blooms or bold colors; these come with summer's sun. Look now for small flowers in shady woodlots; for white, for pale pink and blue for lavender and light yellow.

Do not forget to look overhead as well as underfoot. Year after year the casual observer misses much of the biggest flower show of all, that which is staged by our largest plants, the trees. This show is in progress right now. Long before the more obvious dogwood and shadblow are in flower, the earliest trees have already bloomed and set their seed.

BECAUSE THEIR flowers are so small and often greenish or yellowish and because they grow out of reach over our heads, the show is all over before we are aware of it.

The permanent and woody structure of trees is built over a period of years and their flower buds are set in the autumn. They do not need to wait for stalk and leaf to make a new growth for their support. They are ready to burst into bloom as soon as they receive the required day-length of light.

Of the trees, the willow is the first to bloom. Following close on its heels are red and silver maple, alder, poplar, cottonwood and elm. The oaks do not bloom until early June when their dead catkins clutter lawns and driveways.

Such trees as the horse-chestnut, catalpa and locust with their many showy flowers, do not come into



Mrs. Fretse

sidewalk where they had fallen, their brief function completed. The female flower I had to remove from the tree. Here it will remain to ripen within a few weeks into the familiar "key" or seed.

It bears a divided pistil which makes a more receptive surface for the wind-blown pollen. Both flowers have small petals, the more prominent ones on the female bloom. The "reddish" glow of this tree in early spring is due to its flowers.

FRQUENT reference is made in this column to the trees as "flowering" plants. Used in its botanical connotation, any plant which bears a flower, no matter how inconspicuous, is called a "flowering plant".

Remembering that the requisite for a flower is only that it have stamens and a pistil connected with an ovary, and these not necessarily borne within the same flower or even on the same plant, we increase our awareness of flowers to include those found on all seed-bearing plants.

There are some 125,000 varieties of flowering plants comprising our most highly developed group, many of which are trees.

THE MOST primitive seed plants reach back some 400 million years into the upper Carboniferous flora; our "modern" seed plants into the Mesozoic, some 150 million years ago.

Even before this time the world must indeed have been a greenery. But then no man was abroad to stand in wonderment under a tree misty with spring-time bloom, nor yet to satisfy his inquisitive mind with examining the catkin of a willow or a maple.

CUSTOM CARPET CLEANING
Call to wall carpet shampooing.
Free Estimates
Phone FE 5-3509

sidekick where they had fallen, their brief function completed. The female flower I had to remove from the tree. Here it will remain to ripen within a few weeks into the familiar "key" or seed.

It bears a divided pistil which makes a more receptive surface for the wind-blown pollen. Both flowers have small petals, the more prominent ones on the female bloom. The "reddish" glow of this tree in early spring is due to its flowers.

FRQUENT reference is made in this column to the trees as "flowering" plants. Used in its botanical connotation, any plant which bears a flower, no matter how inconspicuous, is called a "flowering plant".

Remembering that the requisite for a flower is only that it have stamens and a pistil connected with an ovary, and these not necessarily borne within the same flower or even on the same plant, we increase our awareness of flowers to include those found on all seed-bearing plants.

There are some 125,000 varieties of flowering plants comprising our most highly developed group, many of which are trees.

THE MOST primitive seed plants reach back some 400 million years into the upper Carboniferous flora; our "modern" seed plants into the Mesozoic, some 150 million years ago.

Even before this time the world must indeed have been a greenery. But then no man was abroad to stand in wonderment under a tree misty with spring-time bloom, nor yet to satisfy his inquisitive mind with examining the catkin of a willow or a maple.

CUSTOM CARPET CLEANING
Call to wall carpet shampooing.
Free Estimates
Phone FE 5-3509

On the Shore of Lake Michigan
The OLD TRAIL INN
Harbor Springs, Michigan

A Modern Inn on the shore of beautiful Lake Michigan with the hospitality, atmosphere, cuisine and friendliness of an Old Fashioned Inn

ATTRACTIVE GUEST COTTAGES—AMERICAN PLAN
Family Resort — honeymooners Welcome
Rate \$50.00 Up

Private Beach — Attractive Playgrounds
Please write Harbor Springs
The Old Trail Inn 1181-W2 & 1181-W3
Open June 21 thru to September 11
Recommended by "Gourmet" of New York

add color to your life with tone on tone

KORADENIM by Kort of California

This is a season for color and Stephanie Kort has created a wonderful new group of denim casuals and play clothes for you, using harmonizing and contrasting tones. They are the perfect '60s about... they'll go anywhere! And this Koradenim is unusual too! It's a black filled denim—just right in weight, Sanforized, guaranteed washable and colorfast.

Come see for yourself just how terrific these color drenched denims are.

Camisole 3.98
Flare skirt 5.98
Wrap Skirt 5.98
Waistliner 5.98
Jumper 5.98
Smarty pants 4.98
Sleeveless blouse in Sheer 3.98
Cap 1.25 & 1.98



- Camisole 3.98
- Flare skirt 5.98
- Wrap Skirt 5.98
- Waistliner 5.98
- Jumper 5.98
- Smarty pants 4.98
- Sleeveless blouse in Sheer 3.98
- Cap 1.25 & 1.98

The F. J. Mulholland Co.
223 North Woodward Ave.

David J. Underdown's

BROWN'S EXCLUSIVE CLEANERS

W. Maple at Chesterfield MI 4-2400

CASH & CARRY

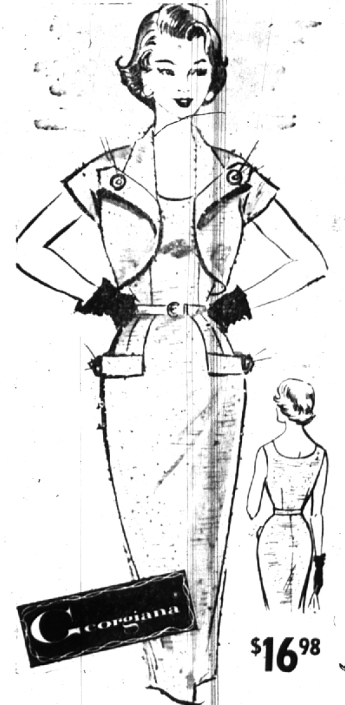
In By 10:00
Out By 5:00

OPEN 7:30 A.M. to 6:30 P.M.

CERTIFIED COLD STORAGE

For Complete Protection of Furs & Winter Woods

Call for Pick-Up and Delivery Service



\$16⁹⁸

2-Pc. Bolero Suit in Viscose Rayon and Raw Silk

Sheer luxury at an everyday price! Tailored in nubby, viscose rayon and raw silk, guaranteed completely washable and color fast or your money refunded. Georgiana's sleeveless sheath with lowered neckline. Short bolero has cap, Dolman sleeves, piped lapels accented with gold, pearl centered button.

Sizes: 12 to 20, 38 to 40
Colors: Beige, Pink, Blue, Green

Other Georgiana DRESSES for Summer from \$7.98

Many other DRESSES in the fabulous new Summer fabrics...

Sleeveless and short sleeve styles in cool cottons, bemberg sheers, percales, rayon acetates and others. Colors and patterns to please you.
Priced from \$3.98

THE F. J. Mulholland COMPANY

STORE HOURS 9:00 A.M. TO 5:30 P.M.