

Torry Principal Is Re-elected at Confab

At the annual two-day conference of the Elementary School Principals of the Michigan Education Association held last week at Kellogg Center, Michigan State College, Richard Featherstone, Torrey school Principal, returned to office as vice-president. Dr. Harold Spears, San Francisco

HAYNES-BOWERS PAVING

Laying of Haynes from Torrey to Bowers, adj. of Bowers from Haynes to Adams in the Adams Village Subdivision was passed by the City commission Monday night.



LATHRUP GIRL SCOUT LEADERS gathered Monday in the basement of the Community Church-Congregational to honor the outgoing neighborhood scout chairman, Mrs. Frank R. Fleischer (right) with a serving tray. Presenting Mrs. Fleischer with the tray is Mrs. Cameron J. Beck. Looking on is Mrs. W. J. Owen, new neighborhood chairman. Engraved on the tray is the girl scout's emblem. (Eccentric Photo)

Realtors Discuss Ethics; Receive Turnpike Outline

Members of the Birmingham real estate board met at a dinner conference recently to consider engaged in this business in the area. Mandatory attendance of all principal brokers and their sales staff was required, and the entire program was pointed toward achieving a high standard of conduct for the real estate business for better public relations.

HIGHLIGHT of the meeting was the outline of the proposed turnpike by E. Thomas Baker, Chief engineer of the Michigan Turnpike Authority.

Baker was invited by the realtors to present detailed survey maps of the proposed toll road, and he was assured that the realtor's interest was solely confined to a search for factual information and not to choose sides on the toll road itself.

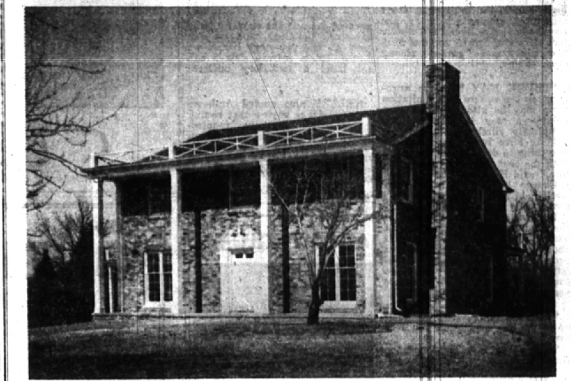
HAZEL-BOWERS PAVING Paving of Hazet from Columbia to Bowers, and of Bowers from Columbia to Haynes in Adams Village Subdivision was passed by the city commission.

If you want to reap a bumper crop of results FAST... at small cost... plant a Classified Ad.

Citizens Group Asks Dedication

The letter of the Birmingham Citizens' group requesting the permanent dedication of Shain Park was tabled for final action to be taken May 2 by the city commission. Signed by six officers of the citizens organization, the letter said that the dedication "would be logical sequence to the views expressed by the great majority at the recent election."

A BLUE GRASS ARISTOCRAT IN BLOOMFIELD



We've just returned from a ride through the rolling blue grass country of Kentucky to find this attractive Bloomfield Colonial just as serene and gracious as those of the South... just as dignified in its rolling orchard setting.

- Really large, spacious rooms... separate Dining Room... oak paneled Library 13 by 17
- Knotty pine Kitchen... truly a joy to use... generous Breakfast Bay
- 4 huge Bedrooms... 3 complete color-tiled Baths (2 have twin basins)
- Full basement... finished Recreation Room with views out above ground
- Included: Dishwasher, disposal, storms and screens (and screened Porch), black top circular drive, Thermo dyans and flush range top... flagstone foyer... large attic and garage storage... lowered wardrobe doors (shelves and built-in shoe racks)... it's completely finished.

Nearly an acre... on Lone Pine near Cranbrook and Christ Church... Vaughan School nearby. Really comfortable... superbly built... you'll like everything about it! Let's see it today.

CALL
MAX BROOCK INC.
REALTORS
ESTABLISHED 1925
300 S. Woodward Ave. MI 4-6700
Birmingham, Mich. JO 4-6700

Let Me Build Your Home
HENRY M. HENDERSON
GENERAL CONTRACTOR
Custom Building—Remodelling
Free Estimates Gladly Given
VE 6-1847 or VE 6-1833
18951 Warwick, Detroit 23

YOU
ARE INVITED TO VISIT THE MOST MODERN, MECHANIZED LUMBER YARD IN MICHIGAN FOR YOUR NEEDS IN

- LUMBER
- PANELLING
- INSULATION
- PLYWOODS
- FLAGSTONE
- Ready-Mix CEMENT
- Pre-Cast CEMENT STEPS
- PLAYSAND
- PAINTS
- Picture Frame MOULDINGS

TERMS ARRANGED

10% DISCOUNT FOR CASH WITH THIS ADVERTISEMENT ONE WEEK ONLY—APRIL 21-28

Restrict
FRIEND OF THE FAMILY SINCE 1884
LUMBER COMPANY
Open Mon. thru Fri. 8 to 5, Sat. 8 to 1
425 S. ETON MI 4-5300

All Makes and Models
LAWN MOWERS
Repaired — Sharpened
Bring in NOW
SUBURBAN SALES & SERVICE
Telegraph at Maple

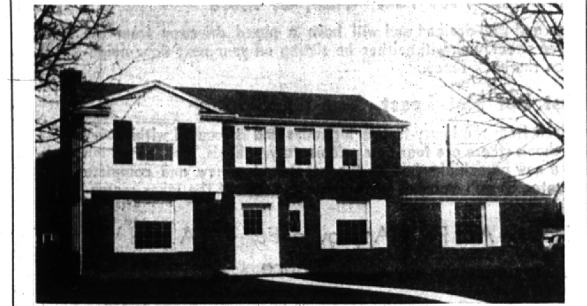
The **BIRMINGHAM** Insurance Agency
Insurance For Every Need
Charles B. Randall
Oscar E. Peterson
Bruce F. Randall
Frank W. Whitson
114 SOUTH WOODWARD
Phone MI 4-2422
AFTER WE SELL WE SERVE

GARAGES
PORCHES
ORNAMENTAL IRON
FHA TERMS
STUART E. SHEILL CO.
318 E. MAPLE MI 4-3713
"Here Tomorrow To Guarantee Today's Job"
SINCE 1947

Complete
Convenient Services
on Residential
MORTGAGE LOANS
Use our nearby suburban office for FHA or conventional loans on new and existing homes. Experienced sales services also available.
HOMER WARREN & COMPANY
600 Dime Bldg., Detroit 26
Woodward 1-0321
Suburban Office
4258 N. Woodward Ave.
Royal Oak
Jordan, 6-3188

WABEEK
STATE BANK OF DETROIT
Member of Federal Deposit Insurance Corp.
WABEEK BUILDING
BIRMINGHAM, MICHIGAN

BLOOMFIELD VILLAGE BEAUTY



Seldom do we take so much pride in presenting a home as the one pictured above. It has everything to offer the discriminating purchaser—prime location—distinctive decorating—and is custom built by one of Birmingham's MOST reputable builders.

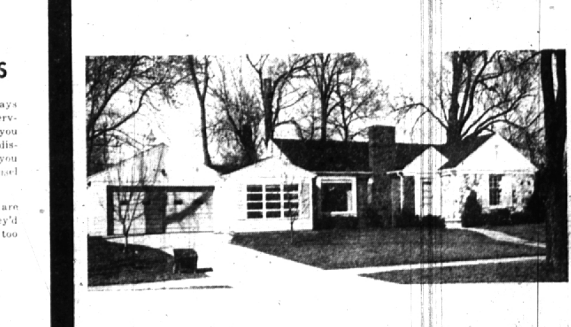
From the gracious center entrance hall the house "flows" well in every direction. The spacious living room has excellent wall space, well placed windows and attractive fireplace—the children and Dad will love the mahogany paneled den, and there is a separate family sized dining room. Mother will be charmed by the wonderful kitchen for its workability, equipment and charming decor.

There is a dressing room and bath adjoining the master bedroom, and another full bath services the other two bedrooms. Lavatories on first floor and in basement.

An attached garage, large porch and plastered recreation room in the basement complete the charming picture—and you will be amazed to learn the price is only \$37,500!

Benjamin & Stephens, Inc.
REALTORS
MIDWEST 4-3232 JORDAN 4-5728
239 So. Woodward, Birmingham, Michigan
Open 9 a.m. to 9 p.m.

HEART'S DESIRE . . .



The perfect answer for the small family. Good-sized rooms. And—a delightful yard... huge trees, as you can see from the picture... wild flowers... crocus, tulips and violets.

- Spacious first floor Florida room.
- Corner cupboards in dining L.
- Eating space in kitchen.
- 2 bedrooms, 2 baths. Full basement

Lots of closet and storage space. Make that appointment now.

Our Integrity
Merits Your Confidence
In Us.
SNYDER KINNEY & BENNETT
Realtors
239 S. Woodward
Midwest 4-7000