

# US-10 Beautification Endorsed by Ex-Mayor

A plea for vigilant action in protecting and enhancing the beauty of Hunter boulevard was made this week in a letter to the city commission by one of the men responsible for planning of the thoroughfare—a former mayor and city commissioner of Birmingham who served the community for 12 years.

John E. Martz, 724 Lakewood avenue, who was a Birmingham city commissioner from 1935 to 1947 and who served as mayor from 1926 to 1944, says he believes that City Manager Donald C. Egbert's recent report to the city commission on U.S. 10

that while some of the beauty originally built into Hunter boulevard has felt the destroying touch of years and rapid municipal growth, there still is time to save much of it.

"The highway commissioners and city officials serving when Route 10 was planned," Martz' letter continued, "visualized much more than a mere wide highway over which the increasing through traffic could bypass Woodward avenue."

"That was one of the reasons the city acquired Poppleton park and put through an ordinance against billboard advertising."

"THERE STILL are no unsightly billboards and the park still is there, but commercialization with its shoulder parking problems has seriously encroached on sections of the boulevard at the expense of access drives, sidewalks, grass and planting."

"Hunter boulevard was opened in the best interests of Birmingham and the through traveling public," the letter concluded. "Now the public has been provided for and only the best interests of our city remain to be protected and advanced."

### Plan Scrap Drive

A scrap drive will be held Saturday by members of Cub Scout Pack B-17. Leaders of the drive are Kenneth Quick, Harold Heidrick and Jack Brown. B-17 is sponsored by the Men's Club of the Kirk-in-the-Hills.



DR. LAWRENCE A. STOLL

BIRMINGHAM'S newest optometrist, Dr. Lawrence A. Stoll, 27, of 4125 Orchard way, Foxcroft, opened his offices at 148 Pierce last week.

A resident of Birmingham since 1913, Stoll was graduated from Baldwin high school in 1935, attended University of Michigan and in 1953 completed his education at Ohio State University.

Stoll, previously with a Detroit firm, will specialize in visual training and primary children's visual training.

### GAA Vice President Starts Second Term

Harry J. Altick, 1018 Kennebec, general agent in Detroit for the State Mutual Life Assurance company, was re-elected vice president of the company's General Agents' association at its annual meeting held at The Homestead, Hot Springs, Va.

Altick, who has been associated with State Mutual since 1946, is a chartered life underwriter.

## WOODRY & WALKER Custom Builders

invite you  
to inspect two beautiful homes  
at the North End of Hupp Cross Road  
in Bloomfield Village

WE WILL GLADLY ESTIMATE PLANS ON ANY SIZE HOME

KE. 0-3830 KE. 3-1225

## ROBERTSON & SON BUILDERS

Hillside Duplication Model  
NOW OPEN

We are now specializing in custom hillside homes. The Hillside Duplication Model is open 9 to 4 daily and Saturdays. Model is located at 1296 LENOX RD., Kentwood Sub. Drive out Adams to Lenox (1 block south of Square Lake Rd.) turn West 1/4 blocks to Model. Prices also given on custom building in Birmingham and Bloomfield. WE HAVE a few nice hillside lots available to build on. Your plan or ours.

ROBERTSON BUILDERS MI 6-2155

## WEBSTER BUELL

Custom Builder — General Contractor

Will build you a fine custom home on your lot or ours. Have several excellent hilltop sites available. Our own architectural service. Also do general alterations and remodeling.

Liberty 4126  
9-4100 N. Woodward  
Royal Oak



## LIVE SMARTLY — BUY WISELY



Yes, folks, here is a highly desirable Center Entrance Colonial in a central location accessible to every interest.

Only 3 years old is this quality home with 3 twin-size bedrooms, a paneled den and a spacious living room with fireplace.

Many fine features left for your surprise.

GLADLY SHOWN BY APPOINTMENT ONLY.

## HALL & YOUNG

Maple Road at Telegraph Inc. B'ham: MI. 6-2700  
Det: JO. 4-5668

## ON A TREE LINED STREET



This charming Cape Cod home is located within 1 block of Quarten school. Quality built in 1949 for the present owners.

Two large bedrooms and bath with tub and stall shower on second floor.

Large bedroom and bath and den, that easily converts into a guest, or fourth, bedroom, on first floor.

Full size bright dining room. Two large porches.

Sizeable eating space in light airy kitchen.

Breezeway to garage on side street. Corner lot.

Beautifully landscaped front and rear.

CALL FOR APPOINTMENT TODAY.

\$39,500

## WALSH, JAMES & WASEY CO.

REALTORS SINCE 1918

431 S. Woodward Ave. Birmingham Midwest 4-6500  
Detroit phone JO 4-6033

## To Study Limits On Use of Sewer

What is necessary to limit use of a new relief sewer will be the subject of a 3-way discussion between the city, the school board and the state health department.

Last week the state said the proposed Columbia relief sewers could not be constructed unless its use was limited to sanitary flows until the 12 Town drain was completed.

The Columbia sewer would permit development of the Adams Village subdivision south of Maple and east of Adams road, as well as a junior high school at Adams and Derby.

BIRMINGHAM commissioners asked City Manager D. C. Egbert to see what decisions can be negotiated so the sewer can be built.

The construction contract was awarded over 30 days ago, but has been held up by the state.

### Bowers Paving OK'd

Paving of Bowers street from Adams to Hunter is planned for this summer, city officials say. Assessment roll for the construction was approved this week in three annual payments.

## GARAGES

PORCHES  
ORNAMENTAL IRON  
FHA TERMS

STEWART E. SHEILL CO.

348 E. MAPLE MI 4-3713

"Here Tomorrow To Guarantee Today's Job" SINCE 1947

Our Integrity  
Merits Your Confidence  
In Us.

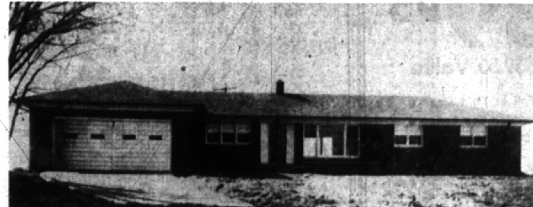
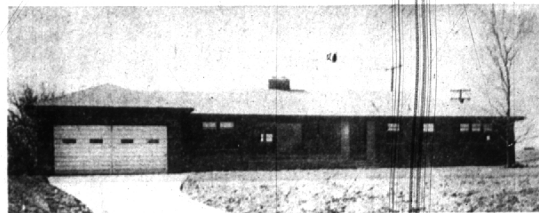
## SNYDER & KINNEY & BENNETT Realtors

239 S. Woodward Midwest 4-7000

## AT LAST!

NOT ONE, BUT TWO, BIG MODERN RANCHES—  
READY FOR IMMEDIATE OCCUPANCY . . . . .

- three bedrooms
- two full baths
- full basement
- library
- beautiful tiled kitchen and breakfast room
- covered porch
- \$36,900



- three bedrooms
- library
- full tiled bath and lavatory
- full basement
- \$35,500

Both of these homes are near the new Bloomfield High School and the area's newest shopping center . . . copper plumbing, natural fireplace, two-car attached garage . . . seeded lawn . . . large rooms throughout . . . circulating hot water heating systems.

We recommend your immediate inspection of these quality built homes . . .

## Benjamin & Stephens, Inc.

REALTORS

MIDWEST 4-3232 JORDAN 4-5728

239 So. Woodward, Birmingham, Michigan