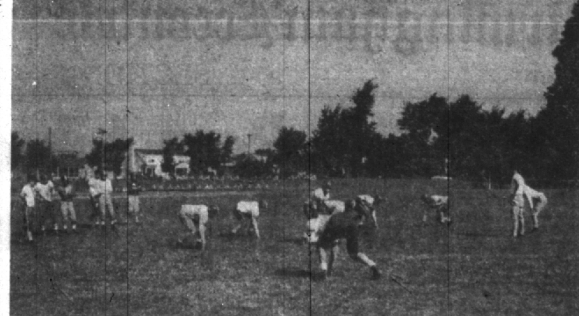


CARL LEMLE TOM BECK
Head coach discusses play with Maple back



BACKFIELD PRACTICE MEANS HOURS OF TEDIUS WORK
Backs learn fundamentals of straight T formation play

Maple Gridders Start Practice Under New Mentor

Practice session for the 1954 Birmingham High school football season opened last week at the high school field with 63 candidates turning out under the hot sun.

"The backfield looks good but we have a great deal of work to do on our line," was the opening comment of Carl Lemle, new football coach who is beginning his first year as the Maples' mentor.

Lemle will have just three weeks to solve the line problem and familiarize his players with the straight T formation before the September 17 opener with Southfield High, a non-league contest.

To tone aching muscles and begin the tedious job of learning plays, two practice sessions a day were held all last week with plenty of body contact drills to toughen the gridders for the nine game schedule.

THE 28 YEAR-OLD coach who succeeded Vincent Secontine this year when Secontine went into

business is familiar with the Eastern Michigan League, having been a backfield coach at Port Huron High school from 1947 to 1951.

He admits he has been somewhat out of touch with the play of each of the league teams since 1951 when he began coaching at Holland High school in Holland, Ohio.

Assisting Lemle this year will be Coaches Lou Farry, Joe Borovick and Tom Carson.

"WE HAVE a serious lack of experienced depth," Lemle commented, and the one big difference I have experienced here is that the Birmingham team is much smaller than the squads I worked with in Ohio where our line averaged over 200 pounds per man."

"The only question in our backfield seems to be the filling of the quarterback's spot," Lemle continued. "As of the first week of practice Senior Dick Morgan, Junior Bill Swamy and Sophomore Ron Sanbery are the leading candidates for the signal-caller's post."

Other backs sure to see service

are Tom Beck, Dave Allen and John Appelford.

"While we have good prospects for the end positions, the line is green and the tackles weak," Lemle stated. "But it's still early and the line may shape up quickly," he said.

"NOW THAT school has started we will only be able to practice from 2 p.m. to 4:30 p.m. daily," Lemle explained. "There is a great deal of polishing to do in the next 10 days before we open against Southfield." This game will be played at Southfield High at 3:30 p.m. Friday afternoon, Sept. 17.

"It's hard to pick the toughest teams in the league but we expect trouble against Ferndale, Hazel Park and Port Huron this season," he stated.

Birmingham gridders will not only have a new head coach but will be playing at the recently completed football field at the high school for the first time this season.

Athletic Director Frank Whit-

ney reported that the new field will seat 4,000 under the new lights. Of this number 1600 will be accommodated on the permanent steel-reinforced bleachers, the first unit in plans to build a permanent stadium at the field.

HOME GAMES this year will be with Cranbrook, September 24; Mt. Clemens, October 1; East Detroit, October 22; and the traditional Royal Oak Thanksgiving Day encounter on November 25. All games will start at 8 p.m. with the exception of the Thanksgiving Day morning tilt.

Season reserved seat ticket books will be sold for \$4 each this year with the reserved seats at midfield on the Cranbrook road side of the field. They may be purchased at the Hill school building, the Varsity Shop, 277 Pierce; or the Sportsman, 116 So. Woodward.

Season Schedule
Sept. 17—At Southfield

Sept. 18—Cranbrook here
Oct. 1—Mt. Clemens here
Oct. 8—At Ferndale
Oct. 13—At Hazel Park
Oct. 22—East Detroit here
Oct. 29—At Port Huron
Nov. 12—At Berkley
Nov. 25—Royal Oak here

Thatcher
Patterson
& Wernet
EST. 65 YEARS AGO
608 Community Nat'l
Bank Bldg.
Pontiac FE 2-9224

They're On Sale NOW!
RESERVED SEAT TICKETS
to Birmingham High School
FOOTBALL GAMES

In the New Stadium—
All (4) Home Games \$4.00

The Varsity Shop Board of Education Bob Covert, Inc.
277 Pierce at Townsend Hill School Bldg. 116 S. Woodward

106th ANNIVERSARY
McINERNEY'S
FINEST POULTRY
With Peg and Chic LI 6-1626

ALL MEAT
CHICKEN PIES 69c
Complete with gravy in separate container. Pies made especially for McInerney's Finest Poultry.

CUT UP PARTS OF FRYERS
• ROASTER • CAPONS
DOUBLE BREASTED YOUNG HEN TURKEYS
• STEWERS • DUCKS • GEESE
• PHEASANTS • SQUABS
ROCK CORNISH GAME HENS
1220 N. Woodward, R. O. (2 blocks south of Shrine)
Hours Daily 9 a.m. to 6 p.m. Mon. thru Sat.


Bowl!
AT
BIRMINGHAM
Michigans Newest Center
18 DeLUXE BRUNSWICK ALLEYS
SODA BAR
Ladies Invited To Join Our Afternoon Leagues
You get the finest conditions at Birmingham
NEW SEMI AUTOMATIC
PINSPOTTERS
Spacious Paved
Parking Alleys
Completely Resurfaced
FOR RESERVATIONS
CALL MI 4-2822
Woodward at Lincoln
Birmingham, Mich.

No Gayer Fall Interlude
than a cruise to the
WEST INDIES
Sail the Blue Waters
of the Caribbean
Call us for reservations
Birmingham Travel Service
379 Hamilton Grace P. Reilly MI 4-5711

the frankel bros. invite you to see the
BETTER HOMES & GARDENS
MODEL HOME FOR ALL AMERICA


INTERIORS BY THE J. L. HUDSON CO.
Located in the wooded beauty of the Woodlea Colony in Birmingham Proper. This completely magnificent home after serving its purpose as a model will be sold at cost, \$42,700 to the first qualified buyer.
It has 3200 sq. feet of enclosed, gas heated and air conditioned area. Upper level offers a 2 bedroom, activities room children's apartment, plus master bedroom, 2 baths, laundry room, custom Thermador built in kitchen with Hot-point dishwasher. 26' x 12' enclosed porch with fiberglass roof, outdoor patio and garage. Lower level with completely finished paneled activities room and lavatory. Completely landscaped. It's the home of the year on the most beautiful new street of new homes in Birmingham.
898 WOODLEA, 2 MILES WEST OF WOODWARD, OFF LINCOLN
builders - designers MI. 4-0237
the frankel bros.
SALES BY GORDON WILLIAMSON . . KE 5-0066

for all your
sporting
equipment
THE VARSITY SHOP
277 Pierce MI 4-4666

THEY'VE MOVED!

This attractive Bloomfield Village home is ready right now!
Move in tomorrow! Start the youngsters in Quorton immediately! The carpeting is down . . . the house is immaculate . . . the grounds are lovely.
It's a New England Colonial as you can see. You'll find its Driftwood paneled activities room on the first floor delightful . . . well planned built-ins . . . Oak parquet floor . . . and away from the Living Room for privacy when needed . . .
You'll like these things too . . . 4 "twin-sized" Bedrooms . . . 2 complete tiled baths . . . a most attractive paneled Breakfast Room . . . garden porch and walled-in patio . . . unusual storage and wardrobe facilities . . . a second Recreation Room downstairs . . . oversized garage . . . black top drive.
Every detail is complete . . . dishwasher, disposal, incinerator, Moduflow heating controls, complete storms and screens . . . and a beautiful landscaped 150 by 150 ft. lot in the low-tax Bloomfield Village—Quorton area.
They left the key with us . . . let's use it today!!!
CALL
MAX BROOCK INC.
REALTORS
ESTABLISHED 1952
300 S. Woodward Ave. Midwest 4-6700