

Philomena Set Meet

The Philomena club will meet Merrill at 1 p.m., Sept. 28 for with Mrs. Harry Johnson, 479 dessert luncheon and sewing.



LATHRUP VILLAGE. OPEN DAILY SEE IT TODAY!

- 18835 San Jose • 5 bedrooms • 2 full baths.
 - 2 lavatories • 2 fireplaces • 34x15 recreation room • 2 car attached garage
 - lot 100'x155' • Price \$31,500.00
- OTHER LOTS AND PLANS AVAILABLE
We can sell your present home.

Lathrup Hall Exclusive Sales JO 4-6657
A. A. Steele Builders FL 1-9897



MAPLE PASS PLAY GOES AWRY
Southfield back intercepts Maple aerial

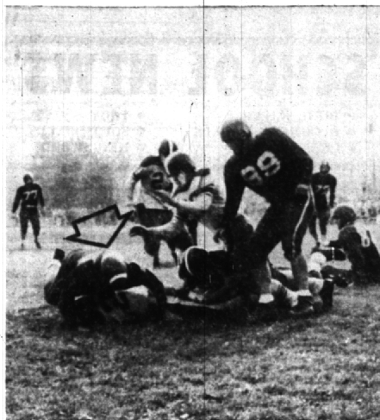
Advertise in the Classified Ads.
Getting ready to sell your car?

Bell Collection Is Business Club Topic

At its meeting this evening, the Birmingham Business Women's club will hear a talk on "Bells at Home and Abroad." Their guest will be Mrs. J. L. Burnett of Pontiac, who will display and explain her collection of bells.

The affair will start with a dinner in the Birmingham Community House at 6:30 p.m.

The September committee, headed by Louise Pratt, includes Esther Minis, Dorothy Walker, Betty House, Edith Schollenberger, Nan Degan and Alice McGregor.



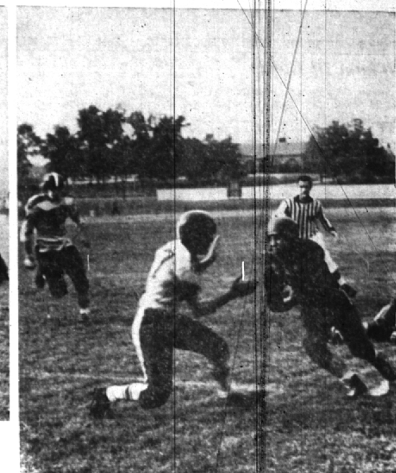
ANYBODY SEEN THE BALL?
Maple drops ball after bruising tackle

Maples Top Southfield In Grid Season Opener

After scoring in the opening two minutes of play, Birmingham held on and presented Coach Carl Lemle with his first victory as local mentor when it toppled Southfield 6-0 last Friday afternoon there at Southfield field.

The 1954 Maples opened powerfully, stunning the Bluejays on the ninth play from scrimmage when left halfback Dave Allen, with head down and pigskin tucked close to his stomach, bulldozed his way through right tackle for the final three yards.

Following a punt, the local sent fullback Wayne Geggie for



MAPLE BACK SKIRTS LEFT END
Birmingham held control of the ball most of game
(Eccentric Photos)

defense while Allen was the best backfield man.

The starting lineups:

Birmingham	pos.	Southfield
Bill Watkinson	LT	Sam Mandersbach
Bob Miller	LG	Mike Salsinger
Jim Renell	LG	Bernard Misowich
Kirk Flack	RT	Dave Orner
Ernest Teichman	QB	Gordon Hart
Ed Peters	RB	Bob Quirk
Jim Traa	RB	Bob Wieland
Bill Swaney	QB	Jerry Gatti
Dave Allen	LB	Dave Juhnke
John Appleford	RB	Fred Courtville
Wayne Geggie	FB	Fred Meischke

Score by quarters:

Birmingham	Southfield
6	0
0	0
0	0
0	0
6	0

Near the end of both halves the Maples came close to scoring. They penetrated the Bluejays' four in the second period after guard Ernie Teichman recovered one of the contest's numerous fumbles just before the half ended. Bill Swaney, junior quarterback, engineered a march late in the game which started on the Maple's 23 yard line and was halted by the closing gun on the Jay's ten. During the drive fullback Tom Back went 47 yards in six plays.

The new Birmingham high school stadium is the setting for the Maple football team's second game of the season tomorrow evening at 8 p.m.

Neighboring Cranbrook will furnish the opposition when the squads take to the turf on the sparkling new field. A brilliant lighting plant and steel constructed stands will greet the home fans.

The Cranes will field a small "linemen" team in quest of their first victory. Although Cranbrook opened just this week, the Big Blue

gridders have been working several weeks and are in top physical shape.

Birmingham did not suffer any serious injuries in last week's 6-0 triumph over Southfield and so all hands should be ready to go.

The Maple-Crane battles can well become traditional season-openers and this should rank with the most exciting.

Palette, Brush Club Hears Art Expert

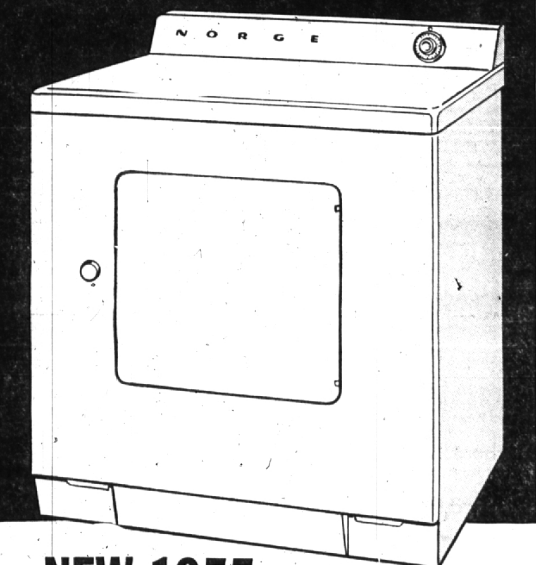
Palette and Brush club members will hear Mrs. Cyril Aaronson Miles, chairman of Highland Park Junior College's art department, speak at 7:30 p.m. Sept. 28 at Westlawn Methodist church.

Mrs. Miles, who also instructs art classes for talented children at the Harlow Art Institute will act as critic for the club's regular judging of paintings. President Mrs. William Fox will conduct the session.

Past Matrons Set Tuesday Luncheon

A potluck luncheon and meeting is slated by the Past Matrons club of Birmingham chapter No. 229, chapter of the Eastern Star, for 12:30 p.m. September 28. Mrs. Linemen Kirk Flack, Watkinson, and Jim Renell stood out for their first victory. Although Cranbrook opened just this week, the Big Blue

Sensational Low Price!



Model AE-600

NEW 1955

NORGE

AUTOMATIC
ELECTRIC
DRYER

Outperforms other dryers
costing up to \$75 more!

SATISFACTION GUARANTEED
or your money back!

NOW... at this sensational low price... every home can afford the convenience of automatic clothes drying. Use it for 30 days in your own home. If you're not completely satisfied, we'll refund your money!

- LOW DOWN PAYMENT
- EASY TERMS

only
\$149.95

GAS MODELS
ALSO
AVAILABLE

FREE! Beautiful Rain Hood. Come in — get yours Today!

ELECTRONIC SERVICE COMPANY

9-6 Daily 9-9 Fri.

1245 S. Woodward

New Fall FABRICS

Draperies

for and
SLIPCOVERS
TO BEAUTIFY YOUR HOME
you pick the Fabric
we'll do all the work
Excellent Workmanship — Prompt Service



FABRICS

Chromespun — Sheers — Metallics — Nylon
Bamboo — Fiberglass — 3-D Woven Textures
Prints — Traditional, Scenic, Moderns
KIRSCH DRAPERY HARDWARE

Interior Decorators At Budget Prices
See Our New Line In Your Home

Quimm's inc.

OPEN THURSDAY, FRIDAY EVENINGS

LINCOLN 6-3311 LINCOLN 3-4656

I LOVE CHILDREN



I AM AN ENGLISH COLONIAL
ON A LOVELY CORNER LOT.

You will find I have a fireplace in the carpeted Living Room and one in the Library. My carpeted first floor activities room, with adjoining lavatory and shower, is just the place for the neighborhood gang. Mother will just love my cheerful family-size kitchen which has a breakfast nook too.

Upstairs I have four bedrooms, a tile bath and also a grand sun-deck. In the basement there is a dark-room for the photographic enthusiast of the family.

My 2-car garage has three small rooms attached which would be ideal for storing bikes, garden equipment and storms and screens.

Come and see me and you will find the buy of a life-time for only \$17,500.00.

CHARLES J.
VAN HORN

361 N. Woodward
Birmingham, Mich.

MI 6-2400
JO 4-5632