

SCHOOL NEWS

• BIRMINGHAM
• BLOOMFIELD HILLS
• CRANBROOK

• TROY
• SOUTHFIELD
• KINGSWOOD

NEED SOMETHING FOR YOUR HOUSE? Then locate it by reading or using the Classified Ads in The Eccentric each week.

GLENN WING POWER TOOLS

- Atlas • Delta
- Porter-Cable
- Shopsmith
- DeWalt Saws

1437 SOUTH WOODWARD
Five Blocks North of 14th St. BIRMINGHAM, MI 4-8444
Daily 8 to 6:30—Fri. 8 to 8:00

Get a Grip on Safety

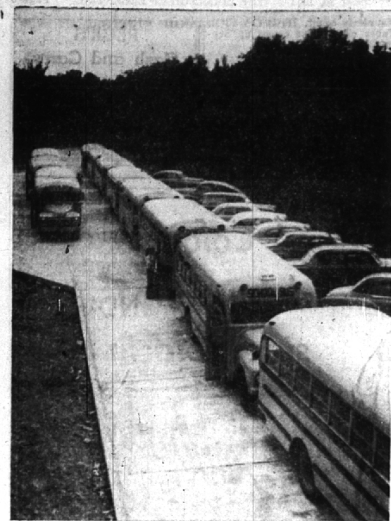


Drive With

Firestone TIRES

BOB ADAMS SHELL SERVICE

MI 4-9750
Hunter at Maple



BUSES NOW LOAD ON SCHOOL PROPERTY
Access drive on west side of Barnum

B'ham School Buses Carry 1932 Daily

For the first week of operation, a daily average of 1932 students in the Birmingham school district are being transported to 12 schools in the city system in two morning and two afternoon runs in addition to nonline runs for kindergarten at Baldwin, Beverly, Torry, Bloomfield and Franklin schools, according to Assistant Supt. Norman A. Wolfe.

The Southfield and Bloomfield Village loads are so heavy that Wolfe anticipates the need of the purchase of two additional buses, one for each area, before the end of the year.

City school system operates a fleet of 21 buses, with two of those as spares, Wolfe said.

Eighteen loads of seventh to twelfth graders go to the junior and senior high schools—averaging 917 students daily for the first week. Nineteen loads went to the elementary grades, averaging 1015 students daily.

IN ADDITION, four bus loads that will later go to Penbrooke when that school is opened—are being scattered to Torry, Adams, Baldwin and Beverly schools under the present temporary arrangement.

In addition three Greyhound bus loads operating along East Maple, West Maple and Oak street go to Barnum Junior high school. Five Greyhound buses operating two for Lincoln, two for Maple and one for Oak street go to the high school.

Each day about 7:30 a.m. the school buses begin their runs, arriving at the high school at 8 a.m. and at Barnum at 8:10 a.m. Elementary grade runs start about 8:20 a.m., arriving at the respective schools about 9 a.m.

In the afternoon, starting at 3 p.m. the system's entire fleet begins departing from Barnum school for the high school.

School buses no longer load on George and Frank streets of Barnum. Since summer time an off-street parking drive from George to Frank was completed on the west side of the school, where all school buses are parked overnight.

60 New Students At Hills High

B.L.M. HILLS HIGH—September 7, started the fall term for the students at Bloomfield Hills High School. Twenty-eight seniors left the school last spring but approximately sixty new people are enrolled for this fall.

The first day lasted only until 12:30 p.m. and was devoted to organizing schedules and purchasing text books.

It is still too early in the year for any activities to be well underway, but the sports departments are beginning their full programs.

Mr. Lemke and a squad of Junior High School boys are working to organize their football team. The varsity boys under Mr. Murray's coaching are working equally hard every afternoon.

For the first time in the school's history Bloomfield girls have established membership with the Girls' Athletic Association.

The results in the GAA officers' election held last June have been posted as follows: president, Virginia Dowling, vice president, Mary Spies; secretary, Phyllis Steele; treasurer, Margaret Pahl.

The affiliation with the association will mean that the girls' athletic program will offer a great deal more to future participants.

To buy or sell a used automobile, read and use Eccentric Classified Ads.

PREPARE NOW

for the Hunting Season Ahead!



SEE US FOR YOUR EQUIPMENT AND APPAREL

- Guns
- Cartridges
- Cleaning Kits
- Blue Rocks
- Lanterns
- Sleeping Bags
- Decoys
- Gun Cases
- Decoy Paint
- Jackets
- Sweaters
- Shirts
- Caps
- Boots
- Pants
- Gloves
- Camp Moccasins

DATES TO REMEMBER

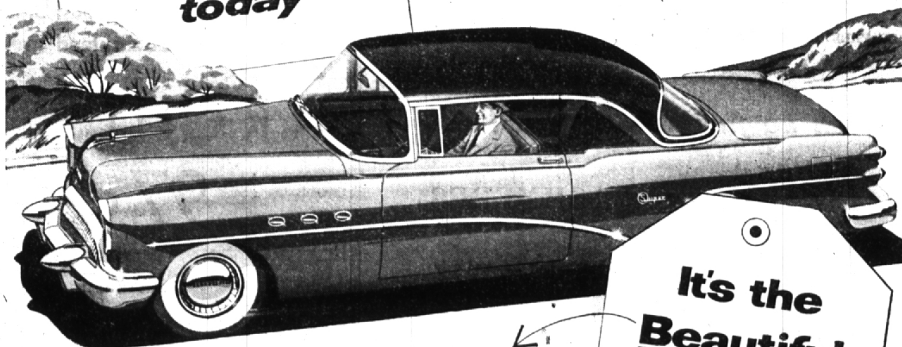
Southern Michigan Northern Michigan U. P.
PARTRIDGE Oct. 20-Nov. 19, Oct. 1-Nov. 10, Oct. 1-Nov. 1
DEER (Bow and Arrow) all areas—Oct. 1-Nov. 5.
DUCK all areas—Oct. 1 to Nov. 24.

The Sportsman

Bob Covert
Erwin Wilson
Leo Renault

MI 6-1225
116 S. Woodward
Birmingham

It's the big Success today



It's the Beautiful Buy right now

It's the "High Resale" car for years from now

No Wonder—Buick Sales are Soaring!

It's just common sense. With Buick's year-ahead beauty today, you'll be driving a car that's right up front in the style parade of tomorrow. And when you're ready to resell your Buick, it will still be fresh and new-looking, with the modern features the others will adopt in the coming years. And that means you're bound to get a higher resale price when you do trade it in. Drop in and see this beautiful buy right now—and see for yourself that you make the buy of the year in this tomorrow-styled beauty called Buick.

Why Not PAINT THIS FALL?

Painting is easy, foolproof



with **ACME Quality Paints**

Which paint to use . . . how much to buy . . . how much to pay

If these questions stump you, drop in at our store. Our paint experts will give you accurate, straight-from-the-shoulder answers . . . help you select just the colors you want from famous Acme Quality Paints. They go on so easily, dry so quickly that the job seems half done before you start. You can't go wrong.



FALL SPECIAL

\$3.50 4" PURE NYLON BRUSH

FREE

With Every 1 gals of HOUSE PAINT

You May Also Take Advantage of This Offer at McBRIDE'S HDWE.

"COLOR IS OUR BUSINESS"

ACME QUALITY PAINT STORE

163 N. Woodward

MI 4-5800

808 S. Woodward

SUMNER MOTOR SALES, Inc.

Phone MI 4-9100

DETROIT TRUST CO.

COMPLETE TRUST SERVICE

Naming Detroit Trust Company as executor or trustee under your will provides assured availability, proven skill and administrative experience without adding to costs. Ask for our folder "Exploding 8 Mistaken Ideas."

FORT AT SHELBY
WO 2-5670