



was born Sept. 29 to MR. AND MRS. DANIEL BRECKENRIDGE GALLAGHER, JR., 744 Graefield court, Mrs. Gallagher is the former Marjorie (Peggy) Harrell.

Are you thinking of buying a new home? Then read the "For Sale Houses" columns on the Classified Ad page of this week's Eccentric.

KAY COOLEY, INC.

Lobby of Stotler Hotel, Detroit, Mich., WO 2-1500
190 W. Maple, Birmingham, Mich., MI 4-7744

SPECIAL SELLING \$17.95

100 DRESSES

All specially priced for Friday and Saturday selling.

Model sketched is Rayon Peppermint.

Grey or Brown

Regular and Half Sizes

Other models of Jerseys—Winter Cottons—Rayon Gabardines Values to \$25.00

OPEN FRIDAY EVENING TO 8:30

A purchase entitles you to free parking in the rear of our store.



WALNUT LAKE—Pricing articles for the annual fall bazaar of the Walnut Lake Woman's club are Mrs. Robert Rauss and Mrs. Robert Annan, co-chairmen, and Mrs. Robert Smith and Mrs. Julian Offenstien. The bazaar to raise funds for a future club building, will be held Oct. 21 in the West Bloomfield township hall. (Eccentric Photo)

Walnut Lake

ELIZABETH BUNNELL MA 6-3444

List Officers, Committees For Laker's PTA Group

Officers for the 1954-55 season each month. Open meetings are held in the league work or the program are invited to attend the luncheon and meeting. Please contact Mrs. Parker Rockwell if you plan to be there in time for lunch.

At the September meeting, Miss Marion Jennings, one of the first exchange teachers to go to Scotland, and Charles Jackson, who has just returned from a year of exchange teaching in London, England, entertained the membership with an interesting and informative discussion of their experiences.

The West Bloomfield township division of the League of Women Voters will have a luncheon meeting on Tuesday, Oct. 19, at the township hall on Orchard Lake road at 12:30 p.m. At the national level, the afternoon discussion will be regarding the United Nations; at the state level, the Gann plan will be explained and at the local level, there will be a skit on voter's service, enacted by members.

All women of the area interested in the league work or the program are invited to attend the luncheon and meeting. Please contact Mrs. Parker Rockwell if you plan to be there in time for lunch.

MUM CULTURE
The Walnut Lake branch of the Woman's National Farm and Garden Association met on October 4 at the home of the president, Mrs. R. C. Banker.

Members and guests were entertained by Mrs. A. H. VanHorn, of the Redford Garden club branch, who spoke on the care and growing of chrysanthemums. Mrs. VanHorn has been raising "mums" for 15 years, and gave much important information as to their care. Club year books containing the outline of the program, were distributed to the members by program chairman Mrs. Henry J. Kela. Mrs. C. K. Holiday acted as tea hostess. Guests are cordially invited to attend any meetings, announcements of which will be printed in this column.

At a meeting held in the West Bloomfield township hall on Thursday, Oct. 7, workers for the Community Chest drive were made acquainted with their duties, and given specific instructions on how to handle the card system. The drive got off to a start on Oct. 9, to run for two weeks.

Women of the Bloomfield Farms Sub who bow on Thursday after-

noon with the Franklin Ladies League are Mrs. Paul Leash and Mrs. George Rees, both of Inkster road; and Mrs. John Small of the North Clunbury road.

Dartmoor drive joined their daughters Nancy in celebrating homecoming festivities at Albion college on October 9. They were met in Albion by the Melbourn Button family, of Allegan, with whom they enjoyed the parade and foot-ball game. On Sunday, both families went to the family cottage at Pine Lake, near Otsego, for the final visit of the season.

Society deadline is 3 p.m. each Tuesday.

BEAUTIFUL ALL-WOOL

BROADLOOM CARPET

by Gulistar

WESTBURY

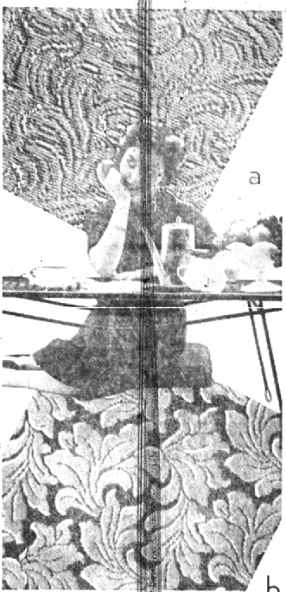
a luxurious, textured wilton weave. Thick, rich yarns form an exciting design that "pulls" a room together to make a warm, comfortable setting. Choose from 4 beautiful colors in 9, 12 and 15 foot widths.

\$9.95 Sq. Yd.

FLORENTINE

captures light and shadow with its sculptured leaf pattern. Effect is pure luxury, yet Florentine is modestly priced. Choose from 7 wonderful colors in 9 and 12 foot widths.

\$8.95 Sq. Yd.



Harold B. Brown

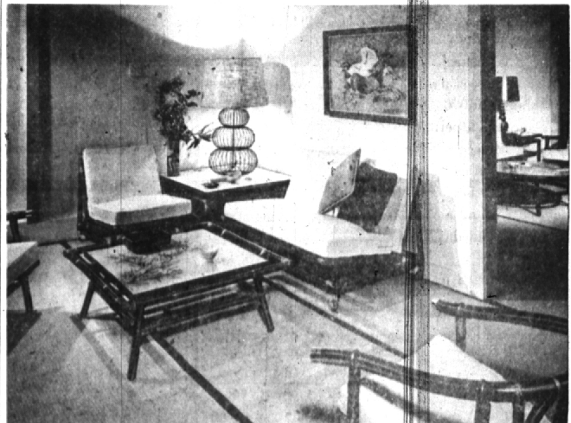
CARPETS and RUGS
2863 WOODWARD (Between 11 and 12 Mile Rds.)
LI 2-9595 Budget Terms Available JO 4-6373
OPEN MONDAY, THURSDAY & FRIDAY EVENINGS TO 9

FAR HORIZONS

FURNITURE

A sunlit concept of living inspired by the Orient

Casual Comfort



In the New Teakwood Finish

Accent on glamour! Tune up that jaded living room or dining area (no matter what "period" it's in) with an exotic, recent piece of romantic rattan designed by John Wisner. Our smartest decorators are doing just that and you'd be astonished at the drama this kind of "mixing" creates. Far Horizons furniture for the living and dining room is rattan at its most unique—stained a rich, sultry teak brown and highlighted by touches of gleaming brass.

SLIP-COVERED
PEACH RUBBER
CUSHIONS
NEW AND
EXCLUSIVE
FURN. FABRICS

LI 6-3311—LI 3-4656

Quinn's inc.

Service for 28 years



DRAPERIES
SHADES, CORNICES

Open Thurs. & Fri. Evenings
2875 N. WOODWARD—3 Blocks So. of 12-Mile

LYNN D. ALLEN



WORTHY OF

YOUR SUPPORT

WORLD WAR VETERAN

for

COUNTY CLERK

Republican

COURTESY, HIGHER EFFICIENCY, IMPARTIALITY

... ask anyone having business with the County Clerk's Office

HURRY! DON'T WAIT

LAST CHANCE TO GET THE SPECIAL BIG

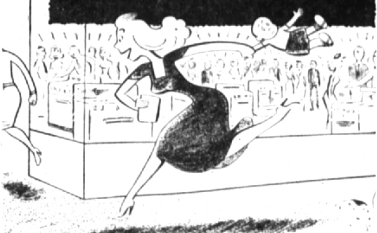
TRADE-IN

for your Old Stove

GAS Range Dealers

"OLD STOVE ROUND-UP"

Ends Oct. 15th



GAS RANGES... Cost less to buy... less to use... less to install... and are faster!
GAS RANGES... Give you smokeless boiling... flame-kissed flavor and instant on-off heat!

PG 4092-A1-20

SEE YOUR GAS RANGE DEALER NOW!