

North Adams

DIBBY SMITH MI 42723

Childrens Work Displayed At Poppleton Open House

On Nov. 11 teachers of Poppleton school and the PTA invited all parents to an open house at the school. After a short business meeting, parents met with teachers in their rooms, saw their children's work on display, talked with the teachers and learned what the school is doing.

Made by **BERRY BROTHERS**

TOUGH DURABLE
Easy to clean!

Lionoil
PORCH and FLOOR ENAMEL

Protects porches, decks, cement floors. High gloss finish that withstands wear and weather.

Easy to apply for a smooth, even surface. Make your color selection today.

9 COLORS

Quarts and Gallons

Easy to apply for a smooth, even surface. Make your color selection today.

9 COLORS

Quarts and Gallons

COPPER
for jewelry craft

ENAMELS & SUPPLIES

AUSTIN'S

LI 1-6070

Fashion-Rights CUSTOM MIXED PAINTS

Michigan's Finest Wallpaper Selections

West 12-Mile Road Just East of Post-Office, — Berkeley — Open Daily 9 to 6 — Friday 9 to 9

men! you'll GO GO GO for Skyway's new pack-right, carry-light luggage

18" BY 28" WEEKEND CASE \$17.75
21" WEEKEND CASE \$20.00
24" SURFACE LATCH & CLOSURE \$30.00

MEN-PREFERRED Skyway cases pack easy, carry light... weigh about half as much as ordinary men's luggage. They're covered with marvelous Koroseal... 12 times as resistant to wear as the finest leather... styled in Swift Tan, smartest new color under the sun. They're quality-built with cast hardware, tailor-stitching, imported linen linings. Priced low... LOW. We have matching Skyway Suitcases also available in Santa Tan.

MORTIMER'S MEN'S STYLE CENTER 123 West-Maple

COMMUNITY HOUSE CALENDAR

Thursday, November 18
6:30-8 p.m.—Buffet Supper (by reservation)
8:30 p.m.—Business Women's Dinner
8 p.m.—Golfview Heights Property Owners Assoc.
8 p.m.—Free Lance Writing Class
8 p.m.—Knights of Columbus Meeting
8 p.m.—Painting Class
Friday, November 19
9 a.m.—Noon—Silver Class
9:30-11:30 a.m.—Painting Class
10:30 a.m.—Senior Work-shop
1-4 p.m.—Enameling Class
7-9 p.m.—Bridge Class
7:30-10:30 p.m.—First Aid Class
Wednesday, November 24
9 a.m.—Noon—Silver Class
Noon—Lions Luncheon
1-3 p.m.—Bridge Class
1:30 p.m.—Drawing Class
1-4 p.m.—Enameling Class
3:30-5:30 p.m.—High School Bridge Class
3:30-5 p.m.—Drawing Class
3:30-5 p.m.—Girl Scout Troop 357
7-10 p.m.—Silver Class
7-9 p.m.—Holy Name Boy Scouts Troop B-12
8 a.m.—Alcoholics Anonymous Meeting
8 p.m.—Duplicate Bridge

WESTERN TRIP
Home again and plugging into all sorts of activities after five weeks of travel is the theme of W. C. Berry of Home Drive. A new car to be driven out west was filled with three generations of Berry's.

In Dallas, the youngest, Mrs. Betty left the others to join her husband, George, who is stationed there. The senior Mrs. W. J. Berry stopped at Santa Barbara to visit her grandson. And, as Mrs. W. C. Berry went on to San Diego, she spent her time touring the southern part of California.

She then returned to pick up her mother-in-law and the two flew to Phoenix, Ariz. They visited Scottsdale which is known as the "most western town in the west."

When they left Phoenix to fly home they ran into complications caused by the heavy rains that flooded Chicago and were not able to land in that city. They stopped at St. Louis instead. The trip home took two days.

Mrs. William C. Hager entertained the Phi Delta Gamma at luncheon at her home on Chestnut Hill drive last Monday.

B-25 CAMP OUT
A weekend end Boy Scout Troop B-25 went to Howell for an overnight campout. Some of the fathers drove the boys out Saturday morning and more fathers collected the campers Sunday evening. The trip provided an opportunity for the boys to work on the earning of their badges.

Speaking of the experience, one mother of a fledgling scout said her boy was so impressed with chili for breakfast that that was the highlight of his trip and as for the mother, she spent an hour and two S. O. S. pads cleaning his new Boy Scout frying pan.

Household goods of every description are offered for sale in the Classified Columns of The Birmingham Eccentric.

en's Breakfast Association Dinner
7:30 p.m.—Hot Rod Club Meeting
7:40 p.m.—Pottery Class
7:30-10:30 p.m.—First Aid Class
Wednesday, November 24
9 a.m.—Noon—Silver Class
Noon—Lions Luncheon
1-3 p.m.—Bridge Class
1:30 p.m.—Drawing Class
1-4 p.m.—Enameling Class
3:30-5:30 p.m.—High School Bridge Class
3:30-5 p.m.—Drawing Class
3:30-5 p.m.—Girl Scout Troop 357
7-10 p.m.—Silver Class
7-9 p.m.—Holy Name Boy Scouts Troop B-12
8 a.m.—Alcoholics Anonymous Meeting
8 p.m.—Duplicate Bridge

Sheffields Tour Tyrolean Alps

Cpl. Alvin H. Sheffield, Jr., his wife, Beverly Joan, and their son, Alvin, returned to their home in Birmingham after a two weeks vacation in the Tyrolean Alps region, riding on the famous cable cars in Garmisch. They saw Oberrambergau, Mittenwald, Farnbach gorge, and took Kim, spent a two weeks vacation touring Germany and have now returned to Karlsruhe where they are making preparations to return to the United States in December, for Cpl. Sheffield's discharge from the Army.

Their trip included an eight-day stay at the Ekasse hotel in Garmisch overlooking the Tyrolean Alps, and a visit to the famous Hall of Mirrors in a castle at Chiemsee.

8 p.m.—Rehearsal
8:40 p.m.—Fainting Class
Thursday, November 25
Closed for Thanksgiving

Have You Met

Mr. and Mrs. Henry H. Gleisner, 1706 Taunton, who formerly lived in Siquima. Their children are Karim, 7, and Eric, 3, and they have lived on Taunton since October. Gleisner, an sporting goods salesman for Holey Brothers, is a member of the Saginaw Gun club and its pistol team, and the Saginaw Ski club. He has done instruction in skiing at Gaylord and in Europe.

RECORDS

CLASSICAL & POPULAR

It's Here Now!
"DEAR SIR"
Recordings of hilarious letters* to draft boards and ration boards — etc.
New Bloopers—Best of Vol. 1 & 2

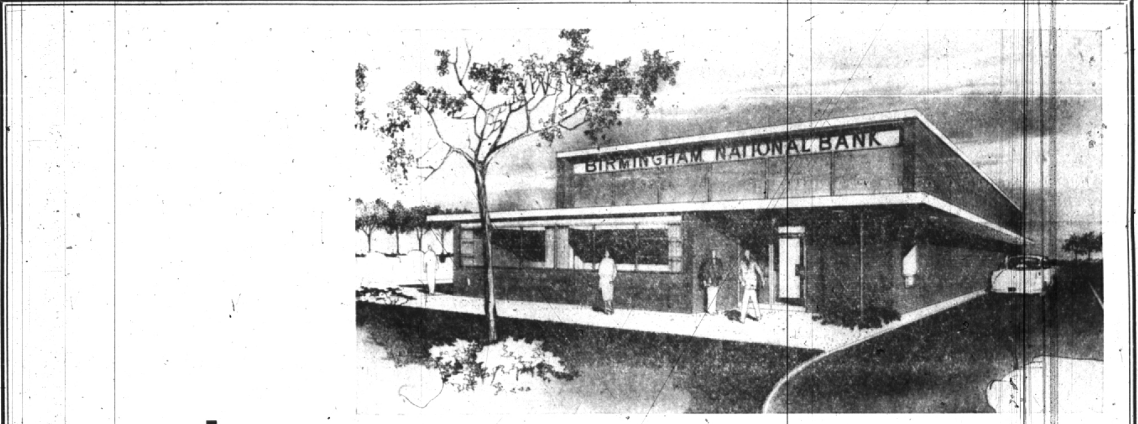
WALTON'S

JEWELRY & GIFTS
154 W. MAPLE MI 4-3140

One for the Road

Three-quarter Length Wool Car Coat that bundles you in style for all your trips... whether town-bound or ex-isting. Back vent & two deep, roomy side pockets. Warm, quilted Milium plaid lining. 10-16 Grey, Red, & Navy. \$55.00

The Village Store
205 Pierce St., Birmingham — Mi 47100



welcome....

to Our SOUTH BIRMINGHAM OFFICE
1954 South Woodward Avenue

OPEN HOUSE, Monday, November 22, 1954 -
9:00 a.m. to 9:00 p.m.

THE BIRMINGHAM NATIONAL BANK

188 NORTH WOODWARD AVENUE

Every Banking Service . . .
Designed for Efficiency . . .
Conveniently Located
Ample Parking Space

ENTRANCE FROM: Woodward Avenue
14 Mile Road & Bird Street

BANKING HOURS:
9:00 a.m. to 3:00 p.m.
Except Wednesday and Saturday, 9:00-12:00

SOUVENIRS TO EVERYONE WHO INSPECTS
OUR NEW BUILDING DURING OPEN HOUSE

Member Federal Deposit Insurance Corporation
Member Federal Reserve System

Mortimer's
MEN'S STYLE CENTER
123 West-Maple