

Walnut Lake Girl Scouts Report on Fall Activities

Girl Scouts of Walnut Lake, who are sponsored by the school PTA, have been busy since the start of the school year with their organization and plans for the coming months. At the October meeting of leaders at the home of neighborhood chairman Mrs. Robert Smith, on Eastmore road, current problems and coming projects were discussed.

Those present were Mrs. John Nababedian, Mrs. Lee Hanson, Mrs. Perry Gray, Mrs. Donald Kipp, Mrs. E. E. Murray, Mrs. Harold Jones and Mrs. Floyd Layman.

2ND GRADE BROWNIES

The new Brownie troop for second grade girls held its first meeting on Thursday, Nov. 4, in the activities room at the school. This is the first troop for this age group in the Birmingham area. Mrs. E. E. Murray and Mrs. Robert Stevenson, co-leaders of the troop, are taking a training course Monday evenings at the Huntington Woods Lutheran church to prepare themselves for the work.

The investiture ceremony is being held today, when, with their mothers present, the following girls will become full-fledged Brownies: Cynthia Joseph, Marcia Madiren, Janis Hampton, Jaz Morton, Marlyn Shank, Sue Dangelvoort, Jill Brown, Barbara Lutz, Barbara Kipp, Wendy Nababedian, Shirley Tremasos, July Kirby, Joyce Houston, Shirley Harper and Suzanne Walker.

Mothers serving on the troop committee are Mrs. Frank Morton, Mrs. Donald Waller and Mrs. Donald Hampton.

Mrs. Stevenson furnished the nibbles for the first meeting, and the girls have volunteered to bring snacks on future Thursdays.

3RD GRADE BROWNIES

Another new Brownie troop, one for third grade girls, meets on Fridays under the co-leadership of Mrs. John Nababedian and Mrs. Donald Kipp. Their meeting on Friday, Oct. 23, was dispensed with while the girls, still in costume from the school Halloween party, enjoyed themselves some more.

BROWNIE TROOP 325

Brownie Troop 325, fourth grade girls, of which Mrs. Harold Jones and Mrs. Floyd Layman are co-leaders, held a cookout on Saturday, Oct. 23, at the Layman home on Blomfield Glen drive.

The girls worked up an appetite by hiking there from school, and did full justice to their own Sloppy Joe hamburgers and the Girl Scout dessert called "Someones", a concoction of Graham crackers, marshmallows and chocolate which tastes surprisingly good.

At their regular Tuesday meetings the girls have made clay dishes, which they glazed this week.

5TH AND 6TH GRADE

Girl Scout Troop for fifth and sixth grade girls meets on Mondays, and is under the co-leadership

Nov. 8. Their next project will be for Christmas giving.

GIRL SCOUT TROOP 360

Troop 360, which includes seventh and eighth grade girls, meets on Tuesdays. Co-leaders for this troop are Mrs. James Roberts and Mrs. Julian Offenstein.

The girls are starting a junior Red Cross course, taught by Miss Brule, girls' counselor at Barton Junior high school. Scouts Kay Gerber and Laura Szymke represent the troop on the Junior Planning board, which is making preparations for the Christmas party for all seventh and eighth grade troops in Southern Oakland County. The party will be held on December 1, in the cafeteria of the high school.

Mrs. John Phelps, of Walnut Lake road, is assisting the girls

in their work on a Christmas Carol to present at the party.

Their current service project is making cosmetic kits for girls of their own age who are in the girls' Training school at Adrian. They are also making conservation studies in preparation for their next badge.

Continues Series On Trip to Europe

At the Tuesday meeting of her International Relations class, Mrs. Ruth Shain will continue a serious discussion of her recent European tour.

Illustrating her talk with pictures, Mrs. Shain went touch on Lake road, is assisting the girls

the historical background of Austria, Bavaria, Italy, southern France and England.

The session, open to the public, will be held at 10 a. m. in the Community House.

Boulevard Shoppe

fine gifts and lamps
1095 S. Hunter Blvd.
Birmingham

Open Friday 'til 8

Beautiful LAMPS

For Bedroom, Living Room and Dining - Modern, provincial and Early American.

PALIZZIO ALLIGATOR LIZARD

new costume elegance with a chic couturier air



The classic beauty of sportiest alligator is used superbly by Palizzio... with all of the skill and craftsmanship that has made these shoes and matching handbags elegant fashion.

Left: High heel sling, 24.95. Right: Medium heel sling, 23.95. Matching Handbag, 22.95 plus 10% tax.

SHOE SALON
STREET LEVEL

Jacobson's

BIRMINGHAM

Use your Charge Plate at Jacobson's

Marion McCoy Moulds Wool Jersey Dresses Two Ways . . . For Day or Evening

Marion McCoy's fluidly graceful, full worsted jerseys go triumphantly basic for day, dramatically embellished for evening . . .

Left: Sleek cocktail sheath with a softly moulded bodice and its own jeweled overblouse. White wine or bride blue. Sizes 9 to 15. \$65.

Right: Beautifully simple basic with baby turtle neck and shirred sleeves. Pink, driftwood, or bride blue or holly red. Sizes 9 to 17. \$9.95.

DRESS SALON - STREET LEVEL

Jacobson's

BIRMINGHAM

2-Hour Free Parking
HAVE YOUR TICKET VALIDATED
AT JACOBSON'S WHEN YOU
MAKE A PURCHASE

PRIVATE INTRIGUE

by Lougees

... the quilted cotton brunch coat with a versatile life



You're warm and comfortable on cold mornings, wonderfully relaxed for TV-ing, lovely about the house, in our dashing, more-print brunch coat, with a wide shawl collar and full skirt. Area of robe. Sizes 10 to 18.

12.95

Jacobson's

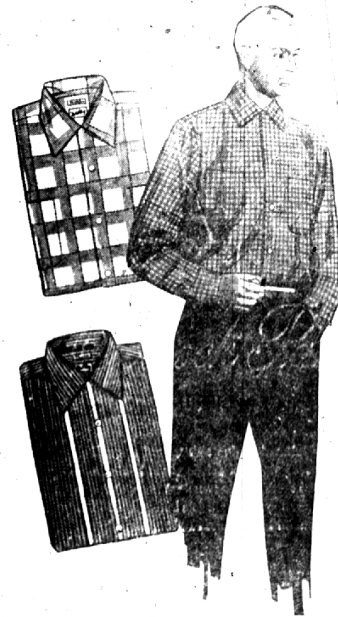
BIRMINGHAM

ROBES - PARKING LEVEL

Raylaine . . .

FABULOUSLY SOFT FRENCH FLANNEL SPORTSHIRTS, PERFECT FOR YEAR-ROUND WEAR . . . CASUAL COMFORT AND SMART GOOD LOOKS

tailored by Barlley



Raylaine is the magnificent blending of wool and rayon . . . The superb sport shirt fabric is light weight, completely washable, and long wearing. Barlley's meticulous tailoring, and a range of handsome colors and patterns, make these the truly important sportshirts of the season. A "Biltmore" in sage blue, grey blue, tan or navy. 12.95. B. "Growth" in combination of sage blue, charcoal, pink, black, navy. 12.95. C. "Belong" in white, navy, tan, grey. 12.95. D. "Soft" in medium, large, extra large.

MEN'S WEAR - STREET LEVEL

Jacobson's

BIRMINGHAM