



SMILING but surprised and bewildered, Mrs. Howard Estes has just learned that she is the "Mystery Guest of the Birmingham Business Women at their dinner meeting May 20. Mrs. Estes saw her life "relived" in slides and script during the "This Is Your Life" program with Miss Helen Larkin as mistress-of-ceremonies. Out-of-town guests who joined the party included Dr. and Mrs. William Dekline, former medical director of the Red Cross in Washington and Michigan state health commissioner; Dr. William Davis, past president of the Michigan Dental society and editor of its magazine; Miss Margaret Davis; Miss Annette Grenough and Mrs. Libel MacKenzie, former public health nurses and Miss Frances Volkner, former business executive. A member of the club for about 15 years and twice its president, Mrs. Estes presented the program script.

Have You Met . .
Mr. and Mrs. John C. Rehard, 6799 East Dartmouth road, who came from Columbus, O., where they have been temporarily residing for two years. A partner in the Thermalair Engineering company, 20600 James Couzens, his is a consulting engineer. He was formerly chief safety engineer for the City of Detroit. Rehard is a member of the Engineering Society of Detroit, American Society of Mechanical Engineers, and American Society of Refrigerating Engineers. They have one daughter, Laura Ellen, age 9, and are members of Kirk in the Hills. Hobbies are made, gardening and fishing.

Household Goods of every description are offered for sale in the Classified Columns of The Birmingham Eccentric.



"At 65, I Get My Money Back..."

...Yes, all the money I'm now paying for life insurance will be returned in full ... plus dividends!"

Under the new family security "insurance or money-back" plan offered by one of North America's leading life companies, the **SUN LIFE ASSURANCE COMPANY OF CANADA**, you can buy a policy which provides life insurance protection for your family until you are 65 and guarantees that, if you live to 65, all the money you paid will be returned to you in full ... plus accumulated dividends.

OR... these proceeds at age 65 can be:
(a) used to provide an annuity;
(b) left on deposit with a guaranteed rate of interest;
(c) used to purchase a paid-up policy for the original sum assured, with a balance which can be taken in cash or as a guaranteed income.

For more information about the Sun Life "money-back" plan, mail coupon below.

COUPON SUN LIFE OF CANADA

Wm. H. Burlingame
607 Shelby St., Detroit 26

Without obligation, I would like more details of the new Sun Life "money-back" plan.

Name.....
Address.....

DOWN TO EARTH Cleveland Gardens Have Foreign Note

By ALICE WESSELS BURLINGAME
Special Writer for The Birmingham Eccentric

While in Cleveland recently on a lecture trip, I had the good fortune to visit the Cleveland Garden Center, Arnold Davis director.

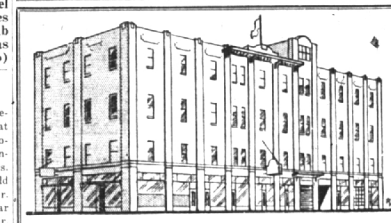
This beautiful building is on the lake in front of the Art Museum. There garden information is given to anybody facing a garden quandary the same as at our own Detroit Garden Center in Belle Isle's White House.

Close by the Cleveland Center in the Rockefeller Park the famous Cleveland cultural gardens have 10 nationalities represented by the melting pot population of Cleveland. There they have in individual gardens as a mecca for the lonesome from those countries. The design of each garden typifies the country it represents.

The English plot is Shakespearean with plants from old English gardens. The Hebrew garden has the shield of David as a symbol in the walks, and rock plants have been brought from Palestine.

THE GERMAN garden has statues of Goethe and Schiller with rows of lindens as a backdrop for the stately. The Lithuanian garden has a bust of their great scholar, Dr. Jonas Basanavicius. The Polish garden has trees from Chopin's estate in Poland.

The Grecian gardens are sunken in the form of a great cross and act as a setting for the large bas-



You Are Cordially Invited to Inspect
OUR MODERN STORAGE
Built Especially to Store Household Goods
Local and Long Distance Moving

Gaukler Storage Co.
9 Orchard Lake Ave., Pontiac, Mich.
Dial "O" ask for Enterprise 6305

aralia on one side of a low wall to discourage children from hopping off into the bushes. This thorny shrub is ideal for half shade.

Garden tour time took many of us to fine local gardens. Among those visited was the A. H. Meyer home on Oxford road in Bloomfield Hills.

THE MEYER garden receives its character by being built on many levels. Walled construction is important and the curved paths take the admirer to a series of surprise effects. Where there is an exit from the lower level the earth extending to it is curved to a peaceful slope and held with stones. Many colorful rock plants give the whole character.

The area of this garden I enjoyed most is the formal rose garden which was reached after a climb up a hill. The arrangement of the rose plants is enclosed by a dwarf yew hedge kept at 12 inches. Stepping stones of uniform pattern between the plants provide an easy approach for care and picking.

Going up the hill to the rose garden is a series of steps with a wall covered with climbing roses and many beautiful pink enchantress geraniums in pots provided the "frothing for the cake."

When you love gardening and pass one with the hobbyist hard at work, do stop and compliment him. Good gardeners know that praise for a job well done provides the spark to keep the tired motor

Have You Met . .
Former residents of Allentown, Pa. They are Mr. and Mrs. Irwin K. Weiss and children, Cheryl Ann, age 9½, Sally, age 7, and Barbara Jane, age 4½. Weiss is an engineer for General Motors Truck and Coach.

**SHIRTS LAUNDERED
1 DAY SERVICE**

BIRMINGHAM CLEANERS
Woodward at Adams Rd. We Give S&H Green Stamps

THEISEN'S GARDEN MART

• 140 •
VARIETIES

ALL POTTED

ROSES

HYBRID TEAS
FLORIBUNDA
CLIMBERS

Including 27 varieties of Brownell Sub-Zero roses.

• BEDDING PLANTS
• Daphne • Pieris • Azalias

THEISEN'S GARDEN MART

3826 N. Woodward, R. O.
Between 13 and 14 Mile Rd.
LI 2-8400

Your center for garden supplies, seeds and sprays. Everything for the green thumb.



Lowest Priced Car With Big Car Performance!

This very week, if you like, you can start a thrilling new motoring life—the wonderful, luxurious life hitherto reserved for owners of costly automobiles. You can step out with the best on streets and highways . . . ride with big-car smoothness, steadiness and quiet . . . take off for far places without a worry about the capabilities of your car.

You can do it now whatever your buying plans because Pontiac provides all major qualities of the finest cars—the size, the long wheel-base, the luxury, the superb engineering, and the

wondrously alert performance—for an absolute minimum cost. Although it looks and acts like the top-priced lines, its cost is within a few dollars of the very lowest.

Come in and try the exciting difference that big-car performance makes. Find out how Pontiac's world-famed economy and dependability hold down driving costs. And learn how easily our generous deal lets you step from your present car to a big, smooth, luxurious Pontiac. The car is waiting for you—make it soon!

**DOLLAR FOR DOLLAR
YOU CAN'T BEAT A**

PONTIAC

WILSON PONTIAC-CADILLAC, Inc.

275 North Woodward Ave. Phone Midwest 4-1930 and JOrdan 4-6655
DON'T MISS DAVE GARROWAY—EVERY FRIDAY, 8 P.M.—WWJ-TV—CHANNEL 4

**D
E
T
R
O
I
T
T
R
U
S
T
C
O.**

**SAFEGUARDING
YOUR
SECURITIES**

A Securities Service Account provides physical protection for your securities, relief from bookkeeping detail and as much investment assistance as you may desire. This service can be adjusted to fit your particular needs. Ask for our folder "The High Cost of Neglecting Your Securities"

**FORT AT SHELBY
WO 2-5670**