

A Bird in the Hand Is Worrisome Thing

An unusual role as foster parents for a baby robin was undertaken last week by Mrs. L. L. Perry, 1691 Birmingham blvd., and Mrs. A. C. Spierling, 1666 Birmingham.

The role began on Wednesday last week when two fledgling red breasts left their nest in a tree in Mrs. Perry's yard.

A villainous blackbird attacked one of the infant birds and killed it. The cries of the second bird drew the attention of the neighbor ladies, and they rushed to the rescue.

BABY ROBIN NO. 2 soon was safely installed in a man-made nest on Mrs. Perry's back porch where he since has been daintily cared for by Mrs. Spierling and Mrs. Perry.

"Believe me, I'm glad I'm not a full time mother robin. I've never dug so many worms in my life," said Mrs. Spierling.

Baby Robin has developed nicely in his new environment and has become quite tame.

His foster parents now are concerned about the fast approaching time when he will have to leave "home" and venture back into the outside world.

BECAUSE HE HAS BECOME so tame, the ladies fear he will be poorly equipped to face such dangers as cats and small children.

They have called the Detroit Zoo and several bird experts and the most satisfactory answer seems to be, "just leave the porch door open and trust to luck."

Baseball Teams Organized at Vaughan School

Baseball is quite an activity around Vaughan Elementary School. Miss Reese has set up two baseball teams in each room in the fifth and sixth grades. They are the Sun and the Moon teams. The fifth grade room 125 leads in playing room tournaments.

Since there were too many people in each room for two teams, there were four other teams made. These teams are called the all Star Teams. There is the Boys All Star Moon and Boys All Star Sun, the Girls All Star Moon and Girls All Star Sun.

Mrs. Blazo's first grade room went to the Bloomfield Hills Fire Department this week. The children made a Fire Truck in their room. They also made a Safety Bulletin Board.

Michael Scriber is a new boy in Mrs. Beaudoin's first grade room. Ingrid Anderson has got chicken pox.

KIM OAKLEY, a pupil in Miss Flannery's Fourth Grade, has brought a mud turtle to school. The child first finished their dimension of Courage Cove, a Fishing Village. Last week they went on a nature walk over to Danny Draper's house. They looked for flowers, and then had a picnic, and then played games. They have also been having Art classes outside for the past three weeks.

Miss Casey's fifth grade room dramatized a play called "Much Too Much." The characters are King, Arthur, Will; first counselor, Steel Woolson; second counselor, Jeff Cook; five princes, Bill Beebe, Bruce Knight, Jack Davis, Glenn Prigunz, Alice Siebert; fersor, Chuckie Williams; princess Rowell; Vickie Allman; nurse, Patty Christensen; guard, Bobby Sandler; sound effects, Paul Irvine.

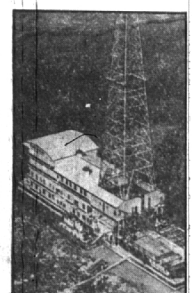
MISS POOR'S fifth grade room has won all their routine baseball games. They are giving a Michigan Program May 21st for the other five grades and parents. It includes an original play by Frank Leven and some original songs by other students.

Six City Lots To Go on Sale

Whether three city lots should be sold for single family purposes or for duplex homes is the question which Birmingham city commissioners this week asked of plan board members.

The lots are on E. Maple, just west of Coolidge. The commission believes perhaps duplexes along the north side of Maple would be a suitable screen between single families to the north and industrial property on the south of Maple.

Three other city lots on York-shire would be offered for single family development under a suggestion by City Manager D. C. Egbert.



UNDERWATER PROBER—Equipped with machinery designed for drilling 20,000 feet under water, the world's largest drilling barge, seen above, is on location in Louisiana waters belonging to the Superior Oil Co., it is four stories high.

Y Young Adults Plan Weekend Camp

The Birmingham Young Adults will hold forth at Camp Ohryea May 29, 30 and 31 with a three day vacation program that promises a good sun-tan and a great deal of fellowship for all groups from all over greater Detroit will be in attendance with the Birmingham group under the leadership of Phil Brettle and Bud Poole in charge of waterfront activities.

Birminghamites will also assist in the evening campfire programs and the sing-fests to attend this week-end campout should register before noon of May 29.

Y Camp Openings Vanishing Rapidly

There are a limited number of openings at the following camps for boys and girls during the summer.

Camp Ohryea, the Detroit Y.M.C.A. camp near Milford, has openings in the first and fifth grades. These are June 28 through July 12 and August 18 through August 27.

Camp Iroquois, near East Tawas, Mich., operated by the Bay City Y.M.C.A. has invited Birmingham "Y" to enroll boys for two week periods beginning July 26 and August 9.

Camp Lake Camp, near Dowling, Mich., operated by the Battle Creek school system, has informed the Birmingham Y.M.C.A. that they will accept boys and girls ages 8-11 for three of its four two-week periods. Capacity of the camp is 40 boys and 40 girls per period.

A few openings remain at Camp Mahan-Goth-See but both Camp Hayo-Went-Ha and Nissokone are filled with long waiting lists.

Softball League Play Opens June 1

Play in the Birmingham Y. M. C. A. softball league gets underway Tuesday, June 1 with Michigan Bell Telephone company, the defending champions, taking on Sam Reeves Service at Elm Park at 6:40 p.m. Detroit Edison Company meets the Birmingham Merchants on the same date and at the same hour on the diamond at Poppleton Park.

On Tuesday, June 3, Birmingham Merchants oppose Michigan Bell at Poppleton Park and Sam Reeves' Service tackles Detroit Edison at Booth Park. There is a possibility of a six team league before the season is many weeks old. Any team that is interested should contact the Birmingham YMCA before June 4 when entries will close.

Plan Board Invites Neighborhood Group To Discuss Land Use

Residents of the neighborhood bounded by Adams, Bowers, Elm and the rear lot line of the lots north of Forest, will be invited to an informal meeting with the Birmingham plan board Tuesday night, June 8, to discuss the best use of the property on the north side of Bowers from the fire station site west to Elm.

The city has received a request to rezone three lots on the north side of Bowers at Elm from single family residence to business B.

The board feels that the neighborhood should discuss ways and means of protecting itself from encroachment of the business district. One idea suggested is the creation of a playground on the lots west of the fire station site.

Check Set-Backs

Revision of building set-backs for homes in a 28-lot subdivision north of Thirteen Mile road and east of Lahar will bring approval of Howard Keating's proposed plat, Southfield board members decided Tuesday night. The subdivision will be known as Berkshire Valley, number four.

Want ads cannot be accepted after 5 p.m. each Tuesday.

PROGRAM

(Continued from Page One)

and not make a dent in this deficit," he declared.

Dr. Bauer said letters were being sent to the county's medical society, hospitals, manufacturers, CIO and United Funds in Pontiac, Oakland county and Detroit. The situation will be explained and suggestions sought.

Bauer said the executive committee hoped to make a final decision on the blood problem at its June 16 session.

Starting the program in 1951, the Red Cross has continued without interruption. During the past 12 months 12,266 pints of blood have been collected, 5,189 being used locally and the rest sent to the defense department.

A BREAKDOWN of blood distribution showed 1,567 went to Pontiac General; 1,097, St. Joseph Mercy; 299, Royal Oak General; 22, Oakland Center; Royal Oak; 151, Ardmore, Ferndale; 53, Oakland county contagious; 209, Oakland tuberculosis sanatorium; 9, Mienke, Hazel Park, and 53, Pontiac Osteopathic.

Oakland county residents in "outside" hospitals received 1,708 pints of blood with 1,077 going to the defense department.

"St. Joseph and Pontiac General are our largest users," Dr. Bauer said. "They take nearly half of the blood the Red Cross gets, besides donations from friends and families of patients."

"The smaller hospitals are not equipped for 'on-the-spot' donations and depend entirely on the Red Cross for blood."

Table Rezoning On Troy Property

Action to rezone a parcel of property fronting on Rochester road and adjacent to the north city limits of Clawson was tabled by Troy township board members Monday night until the board's June 12 meeting.

Residents living near the property protested the zoning board's recommendations to rezone the land from commercial to light industrial and board members decided to investigate the objections.

Owner of the land, Peter Patrick, seeks the rezoning to construct a tool and gauge shop. The Erie Tool and Gauge company, Hazel Park, would be the tenants. Zoners recommended a greenbelt strip be dedicated on the north side of the 120-foot industrial property to protect Troy home owners.

B'ham Teacher Wins Fulbright Award

Miss Angelina Gaziola, four years a teacher of world history at Birmingham high school, has been awarded a Fulbright scholarship to study at the University of Florence in Florence, Italy.

Miss Gaziola's resignation from Birmingham high school effective June 18 was approved last week by the board of education.

The scholarship granted by the U. S. government includes transportation, tuition and living expense for one year at the university beginning September 27.

WOODCRAFT CO. 1184 Grant MI 4-0424

SCREENS AND STORM SASH FLUSH DOORS • Combination doors and windows • Cupboard doors and drawers • Kitchen doors • Driveway doors • WOODCRAFT CO. 1184 Grant MI 4-0424

STERNAL'S for GOODYEAR Tires and Tubes

FREE CUSTOMER PARKING In Rear of Store Open Friday evening to 9:00

HEARING AIDS BATTERIES for ALL MAKES Make Inquiry at Our Store and Get All of the Details MI 4-2121

SHAIN'S DRUG STORE 105 W. Maple

Birmingham LOCKSMITH Service Midwest 4-7939 DAY AND NIGHT CITY-WIDE SERVICE Auto-Home-Office-Luggage

OUR NEW LOCATION 231 E. BROWN ST.

MEMORIAL DAY

FOOD VALUES

Mississippi Brand
SLICED BACON
VERY LEAN **79c lb.**

CHOICE & PRIME—TABLE TRIMMED STANDING RIB ROAST 73c lb.

DuBuque **CANNED HAM** 3 lbs. each **\$3.49**

Southern Star **CANNED HAM** 6 3/4 lb. Can **\$6.99** 10 to 12 lb. Average **89c lb.**

SMOKED HAMS Oven Ready **DUCKS 59c lb.**

Whole Ham **69c lb.** Shank Half **65c lb.** **SHRIMP** 5 lb. **\$3.29** Box **69c lb.**

Aunt Jane's Plain or Kosher **DILL PICKLES** quart jar 31c
Aunt Jane's **SWEET MIDGET PICKLES** 10 Oz. Jar 39c
Maywood Jumbo **RIPE OLIVES** 3 tins \$1.00
Miracle Whip **SALAD DRESSING** quart jar 49c
Heinz **KETCHUP** 2 lge. bottles 49c
Premier Halves **BARTLET PEARS**, No. 2 1/2 tins 2 for 87c
Pond's 300 ct. Pkgs. **FACIAL TISSUES** 2 pkgs. 45c
Seasdown **CAKE FLOUR** package 39c
Baker's **BITTER CHOCOLATE** 1/2 lb. 45c

AWREY BAKERY
Delicious Peanut Butter Cookies . . . 50c per dozen
Fresh Fruit French Pastry Strawberry Tarts . . . 3 for 65c
Fresh Fruit Strawberry Pies . . . 85c each
All Butter Individual Almond Crunch
Coffee Cakes . . . 3 for 49c
Old Fashioned Banana Nut Bread . . . 72c each
Chocolate Crunch Fudge Cup Cakes . . . 6 for 47c
Almond Apple Filled Danish Coffee Cakes . . . 75c each
Glazed Cinnamon Roll Danuts . . . 6 for 45c
SPECIALTY BREAD—A DIFFERENT VARIETY EVERY DAY
White Sugar Dunkers . . . 57c per dozen (FRIDAY & SATURDAY ONLY)
Rich Butter Cream Loyer Cakes . . . 67c each
Cream Frosted Devil's Food Chiffon
Loyer Cakes . . . 63c per half, \$1.25 each

AUNT JANE'S Iceberg DILL PICKLES 2 26 OZ. JARS **69c**

Fresh Vegetables CALIFORNIA POTATOES 10 lbs. 65c
Fresh Fruits FLORIDA PINK GRAPEFRUIT 10 for 69c

BIG NEW FAMILY SIZE 28 OUNCES
Campbell's **PORK & BEANS** 2 TINS 45c
CROSSE & BLACKWELL **Orange Marmalade** Sweet or Bitter 2 JARS 49c

CROSSE & BLACKWELL **CREAM MUSHROOM** Bisque Soup 2 TINS 49c
Bumble Bee Red Sockeye **SALMON**, No. 1 tin 63c
Bumble Bee Chunk Style White Meat **TUNA** 3 TINS \$1.00

R. & M. **Baked Beans** 27 oz. Jar 29c
KRAFT, 10 OZ. PKG. **Marshmallows** 19c
MAXWELL HOUSE **Coffee** \$1.09 lb.

MILLER'S LITTLE RED HEN CHICKEN PIES MADE FROM YOUNG FARM FRESH CHICKENS
BEST BY ANY TEST
DELICIOUSLY DIFFERENT
A Real \$1.00 Meal . . . 2 For 89c

frozen foods
PEACHES, 10 oz. pkg. . . 2 for 49c
PEAS, 10 oz. pkg. . . 2 for 37c
PEAS & CARROTS, 10 oz. pkg. . . 19c
FRENCH FRIES, 9 oz. pkg. . . 2 for 35c
Chicken or Beef **FROZEN PIES**, 8 oz. . . 3 for \$1.00
Par-Ken **LIMEADE**, 6 oz. . . 2 for 37c

Sire's