

# Registration Deadline Near on Franklin Vote

By ANGELA DADSON  
Staff Correspondent  
MA 6-2411

FRANKLIN VILLAGE—Just two days remain for registration to vote in the election of June 15 which is to determine the fate of the proposed Village of Franklin charter and select officials for the intended village government. Members of the charter commission warn all residents again that previous registrations of any character are invalid in this vote.

As things now stand, a small minority will decide the charter's acceptability, for only a modest percentage of the potential voters have registered to date. Registration will take place at the Village Nursery School from 10 to 2 next Saturday and from 7 a.m. until 9:30 p.m. next Monday, the last day.

Mrs. Norman Currin was hostess to forty guests at tea at her home on Captains lane last Monday afternoon. The affair was in honor of Mrs. Emil Pellar. The Pellar and their children Doran and Judy will be leaving Franklin next week to make their home in Decatur, Ill.

Mrs. Roy Jones entertained twelve guests from Rosedale Park at luncheon at her Telegraph road home last Tuesday.

Mrs. Clifford Baugh anticipates sixty guests when she opens her home at 215 Hawthorn, Birmingham, on May 27 for a musical tea at 1:00 p.m. for the benefit of the Friendly Circle of the Franklin Community Church.

There will be a program of organ and piano music provided by Mrs. Baugh, Mrs. Haskell Wright, Mrs. Roy Jones and Mrs. Earl Taylor will assist in the affair. A donation is requested and reservations should be made in advance with Mrs. Baugh or Mrs. Wright. This is the second project arranged by the circle members, to raise funds, in lieu of the usual fall bazaar.

The members of St. Anne's Guild will hold a dessert party at the Franklin Community Hall at 1:00 p.m. next Tuesday, May 18. Mrs. Otto Schubert is chairman of this event, assisted by Mrs. Edwin Casenhiser, Mrs. V. P. Ryan, Mrs. Steve Kowalski, Mrs. Clyde Worley, Mrs. Phil Van Dyke, Mrs. John Whitting, Mrs. Leo Ischman and Mrs. Leonard Lawton.

Mrs. and Mrs. Tyler Barrett will be hosts at cocktails preceding the Community Association dance at Bonnie Brook club tomorrow night. Their guests will be the John Crays, the Pat Byers, the Nicholas Rosiellos, the Philip Moores, the George Howards and Mr. and Mrs. Herbert Smith, Jr.

Mrs. and Mrs. Roy Jones and the John Whittings will be hostess at cocktails at the Jones' home on Telegraph road preceding the Franklin dance at Bonnie Brook tomorrow night. Their guests will be the Robert Lyman, of Dearborn, Mrs. and Mrs. Clarence Knott of Detroit.

Entertaining a group at dinner before the dance will be Mr. and

Mrs. Win Hinman, at their home on Wellington road.

Judy Roselli was seven last Sunday. She celebrated on Saturday as young hostess to twelve small friends.

The ladies of the Friendly Circle will meet in regular session at 12:30 p.m. next Wednesday at the Greenbrier road home of Mrs. Stanley Krentel. Their annual election of officers will take place and Roger P. Hill, assistant director of the Michigan Society for Mental Health, will address the ladies on that subject.

Mrs. Preston Dozier, Jr. will be hostess when the ladies of the Evening Circle hold their May meeting at her home on Willowgreen at 8:30 p.m. next Thursday, May 20. Officers for the coming year will be elected that night.

The Lenox Study Group will meet on the morning of May 19 at the home of Mrs. Win Hinman, Wellington road. Mrs. Leonard Madge will lead the discussion.

Mrs. Volney McIntosh will be hostess at coffee at her home on Garden Way at 9:30 a.m. next Wednesday, May 19, when Girl Scout leaders and co-leaders will meet for the last time with their neighborhood chairman, Mrs. Herbie Tarasch, who will be chairman next fall, and the incoming troop leaders have been invited to attend. Members of the Franklin branch of the National Farm and Garden Association will hold their luncheon when they meet in the social room of the Franklin Community Church at 12:30 next Monday for annual reports and the election of officers.

The Discussion Group were guests of Mr. and Mrs. Glen Shoemaker at their home on Riverwood road last Sunday night. Mrs. Shoemaker presented colored slides of pictures taken in Europe.

Because the Franklin Women Bowlers have had a long waiting list of prospective members, a second sanctioned league is being organized. The new teams will bowl at Bloomfield Lanes at 10:00 a.m. each Wednesday starting early in September.

The original league will continue to bowl at 12:45 p.m. when their new season opens on Thursday, September 16, at the Birmingham alley. New officers of this league are Mrs. Norman Carrin, president; Mrs. Phillip Moore, vice-president; Mrs. Rudy Hanson, secretary; Mrs. Frank Taylor, treasurer; and Mrs. Homer Hyde, sergeant-at-arms.

New officers of the Woodcreek Women's Association are Mrs. Vernon Fisher, chairman; Mrs. N. A. Thurston, vice-chairman; Mrs. Fred Missel, recording secretary; Mrs. Arthur Banfield, corresponding secretary; and Mrs. Harry Eymon, treasurer.

Retained as officers of the Promoters square dance group are Leonard Madge, chairman, and Hap Buegel and Grant Sivier, co-chairmen. New chairman of the Country Squares is Murdoch Morrison. Their newly-elected secretary is Frank Taylor, treasurer is Mrs. Norman Carrin.

## Newcomers Slate Fashion Show at Community House

Playclothes, beachwear, afternoon and after-five dresses will be viewed by members of the Newcomers club at noon, May 20, at the Community House.

A patio setting will be the background for models, including Mrs. Edward Lerchen, Mrs. Hugh Martin, Mrs. Phillip Maxwell, Mrs. Robert Taylor, Mrs. James P. Chapman and Miss Margaret Ellen Wallace.

Mrs. Robert Craig of the Village Store, which is presenting the show, will be commentator and Mrs. Charles Hinton will play background music.

Hostesses for this month are Mrs. Donald Cushman, Mrs. Harold Grant, Mrs. Earl Strub, Mrs. Thomas Raleigh and Mrs. Robert Gill.

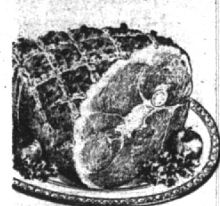
## Back-from-Florida Vacationers Shiver

Recent returnees who have been spending vacation periods in Florida are loud in expressing regrets at arriving in the midst of Birmingham's chilly spring.

Among those returning within the past 10 days are Mr. and Mrs. Louis Aldrich, home again from West Maple, after five months near N. Redington, where their son Robert resides.

Mrs. C. B. McCormick has returned to 202 Fernside after three months in the Southland. She stopped off at Arlington, Va., for the Easter sunrise service at the National Memorial cemetery. Also home are the F. Watkins, 838 Knox, who spent some time at St. Petersburg.

# GET MORE CHANGE FROM YOUR FOOD DOLLARS... WHEN YOU CHANGE to A&P!



FAMOUS "SUPER-RIGHT" QUALITY

## Smoked Hams

WHOLE HAM 69¢ LB. SHANK PORTION 59¢ LB. BUTT PORTION 69¢ LB.

"SUPER-RIGHT" BLADE CUT

Standing Rib Roast "SUPER-RIGHT" 7-INCH CUT . . . LB. 59c

Beef Roast "SUPER-RIGHT" ARM OR ENGLISH CUTS . . . LB. 53c

Ground Beef "SUPER-RIGHT" GUARANTEED FRESH . . . LB. 39c

"Super-Right" Bacon LEAN, FANCY RINDLESS—SLICED . . . PKG. 83c

All Good Bacon SLICED—THRIFT-PRICED . . . PKG. 75c

Grand Duchess Steaks FROZEN . . . 11-OZ. PKG. 49c

HEAVY ROCK BREED—STEWING

Chickens COMPLETELY CLEANED . . . LB. 39c

Beef Liver "SUPER-RIGHT" . . . LB. 39c

Leg O' Lamb "SUPER-RIGHT" . . . LB. 69c

Leg O' Veal "SUPER-RIGHT" . . . LB. 47c

TENDER 5 TO 7 POUND BELTSVILLE

Turkeys . . . . . LB. 55c

Veal Shoulder Roast . . . . . LB. 43c

Liver Sausage FRESH OR SMOKED . . . LB. 59c

Skinless Frankfurters . . . . . LB. 49c

Fish and Sea Food

TOP QUALITY—5-LB. BOX 3.41

Large Shrimp . . . . . LB. 69c

Fresh Lake Trout PAN-READY . . . OPENED 59c

Fish Sticks "4 FISHERMEN" BRAND . . . 10-OZ. PKG. 49c

Fresh White Bass PAN-READY . . . LB. 27c

Ocean Perch Fillets CAPT. JOHN . . . LB. PKG. 41c



To Get More From Your Food Dollar  
Get A&P's FRUITS and VEGETABLES!

CALIFORNIA 200-220 SIZE

## Navel Oranges Doz. 39c

BLACK VALENTINE

Green Beans . . . 2 LBS. 35c

DELICIOUS ON ALL HOT FOODS

Keyko Margarine 1-LB. CTN. 29c

M & M Candy DELICIOUS TREAT HEAT TO EAT . . . 6 1/2-OZ. PKG. 25c

Mazola Oil . . . . . QT. BOT. 71c

Mazola Oil . . . . . PT. BOT. 37c

Real Gold CONCENTRATED ORANGE BASE . . . 4-OZ. CANS 31c

Ivory Flakes . . . . . REG. PKG. 30c

Lava Soap . . . . . 2 MED. CAKES 23c

Dreft . . . . . GIANT PKG. 72c REG. PKG. 30c

SHEDD'S E-Z-Y MIX

French Dressing . . . . . PT. BOT. 37c

SHEDD'S OLD STYLE SAUCE . . . 8-OZ. BOT. 23c

Red Star Yeast FOIL WRAPPED FOR FRESHNESS . . . REG. PKG. 5c

Cat Food PUSSEY BOOTS . . . 2 13-OZ. CANS 29c

Argo Gloss Starch 14-OZ. 13c 34-OZ. PKG. 29c

Camay Soap REG. SIZE . . . 3 CAKES 25c

Camay Soap BATH SIZE . . . 2 CAKES 25c

Lux Flakes . . . . . GIANT PKG. 59c REG. PKG. 30c

Rinso HALF PRICE OFFER . . . 2 REG. PKG. 45c

Fab FABULOUS RICH SUDS . . . REG. PKG. 30c GIANT PKG. 72c

Dial Soap . . . . . 2 BATH CAKES 37c

Armour's Suds . . . . . 19-OZ. PKG. 30c

Chiffon Flakes . . . . . WITH ARCTIC IMP. 1 REG. PKG. 29c

CUBAN 9-SIZE FRESH

Pineapple . . . 3 FOR 1.00

Fresh Corn FLORIDA GROWN YELLOW HYBRID . . . 5 EARS 39c

Pascal Celery 24-SIZE, WASHED AND TRIMMED . . . STALK 19c

Florida Cucumbers FANCY WAXED . . . 4 FOR 29c

Head Lettuce ICEBERG—24-SIZE . . . 2 HEADS 39c

Red Ripe Tomatoes . . . . . 14-OZ. PKG. 29c

Sun Maid Raisins MINIATURES . . . 6 PKGS. 19c

Frozen Food Values

LIBBY'S FRESH FROZEN

Garden Peas 7 10-OZ. PKGS. 1.00

Libby's Pineapple . . . . . 5 10-OZ. CANS 99c

Cherry Pies MORTON'S . . . 5 FOR 99c

Strawberries LIBBY'S . . . 4 10 1/2-OZ. CANS 99c

French Fries LIBBY'S . . . 7 9-OZ. PKGS. 1.00

Get A&P's Dairy Values!

WISCONSIN RINDLESS

Swiss Cheese . . . LB. 59c

Sunnybrook Eggs LARGE, FRESH GRADE "A" . . . DOZ. 49c

Silverbrook Butter 90 SCORE . . . LB. PRINT 59c

Cheez Whiz KRAFT'S SPREAD . . . 16-OZ. JAR 59c

Cottage Cheese RISON'S . . . 16-OZ. CTN. 19c

Ice Cream CRESTMONT—VANILLA OR NEAPOLITAN SLICE PAK . . . 1-GAL. PKG. 79c

Get A&P's Bakery Values!

JANE PARKER

Glazed Donuts . . . PKG. OF 12 29c

Blackberry Pie . . . . . 8-INCH SIZE 39c

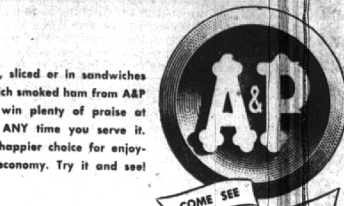
Spanish Bar Cake . . . . . ONLY 29c

Raisin Cookies OVER 20 IN. PKG. . . ONLY 25c

White Bread JANE PARKER—SAVE UP TO 3c A LOAF . . . 20-OZ. LOAF 17c

Orange Chiffon Cake . . . . . EACH 55c

Potato Chips JANE PARKER ECONOMY PKG. . . 1-LB. BOX 59c



Hot or cold, sliced or in sandwiches... flavor-rich smoked ham from A&P is sure to win plenty of praise at parties, or ANY time you serve it. There's no happier choice for enjoyment and economy. Try it and see!

HEINZ STRAINED

Baby Food 4 4 1/2-OZ. JARS 39c

Wheaties . . . . . 12-OZ. PKG. 23c

Hershey's Cocoa . . . . . 4-OZ. CAN 29c

Maine Sardines . . . . . 3 3 1/2-OZ. CANS 29c

Angel Food Mix BETTY CROCKER . . . 17-OZ. PKG. 55c

Corn Muffin Mix SHEDD'S . . . 8-OZ. PKG. 10c

Gold Medal Flour . . . . . 10 LB. BAG 99c

Pancake Flour PILLSBURY . . . . . 16-OZ. PKG. 33c

Dole Pineapple SLICED . . . . . 4 14 1/2-OZ. CANS 69c

JEFFY BRAND SPECIAL OFFER!

Biscuit Mix . . . 40-OZ. PKG. 29c

Prune Juice SUNSWEET . . . . . QT. BOT. 35c

Apple Butter EVERYMEAL . . . . . 28-OZ. JAR 27c

Beef Stew BROADCAST . . . . . 16-OZ. CAN 29c

Spiced Luncheon Meat ACAR'S . . . 13-OZ. CAN 39c

Chili Con Carne BROADCAST WITH BEANS . . . 16-OZ. CAN 25c

Spaghetti GREAT BATH . . . . . 16-OZ. CAN 19c

Large Ripe Olives EARLY CALIF. . . 7 1/2-OZ. CAN 39c

Cleansing Tissue ANGEL SOFT—WHITE . . . 2 PKGS. OF 400 39c

Northern Tissue . . . . . 3 ROLLS 23c

RED SOUR PITTED

Pie Cherries 2 19-OZ. CANS 39c

Dill Pickles DAILY PROCESSED . . . 32-OZ. JAR 31c

Fruit Cocktail DOLE . . . . . 8-OZ. CAN 15c

Short Grain Rice SULTANA . . . . . 2-LB. PKG. 27c

Del Monte Ketchup . . . . . 14-OZ. CAN 19c

Deep Brown Beans LIBBY'S . . . 2 14-OZ. CANS 27c

Country Gentleman Corn DEL MONTE . . . 2 17-OZ. CANS 35c

Cavern Mushrooms PIECES AND STEMS . . . 8-OZ. CAN 49c

Daily Dog Food . . . . . 3 16-OZ. CANS 25c

Cleanser SUNBRIT . . . . . 3 CANS 25c

FLORIDA

Orange Juice 2 46-OZ. CANS 49c

Navy Beans JACK RABBIT . . . . . 2-LB. PKG. 29c

Tomato Juice IONA . . . . . 2 46-OZ. CANS 35c

dexo Shortening . . . . . 1-LB. CAN 73c

Evaporated Milk . . . . . 4 14 1/2-OZ. CANS 47c

Sultana Cocoa . . . . . 1-LB. CAN 39c

Coldstream Salmon . . . . . 16-OZ. CAN 43c

Sultana Tuna Fish FLAKES . . . . . 6-OZ. CAN 23c

A&P Apple Sauce . . . . . 2 16-OZ. CANS 35c

Iona Apricots UNPEELED HALVES . . . 2 16-OZ. CANS 49c

SULTANA

Salad Dressing . . . 32-OZ. JAR 39c

Fruit Cocktail SULTANA . . . . . 3 30-OZ. CANS 1.00

Grapefruit Sections AAP . . . . . 2 24-OZ. CANS 29c

Grapefruit Juice AAP . . . . . 2 44-OZ. CANS 39c

A&P Peaches PRESTONE HALVES . . . 3 28-OZ. CANS 1.00

Ritz Crackers . . . . . 1-LB. BOX 33c

CHICKEN OF THE SEA—ALBACORE, WHITE MEAT

Fancy Tuna . . . 7-OZ. CAN 43c

All prices in this ad effective through Saturday, May 15

AMERICA'S FOREMOST FOOD RETAILER—SINCE 1859

A&P Super Markets

THE GREAT ATLANTIC & PACIFIC TEA CO.

**STERNAL'S**  
for  
**RCA Television**  
Radios and  
Record Players  
FREE CUSTOMER  
PARKING  
In Rear of Store  
Open Friday evening to 9:00

**FREE BOOKLET**  
**HOW TO PROFIT THROUGH TAX EXEMPTION**

**HOW TO PROFIT THROUGH TAX EXEMPTION**  
With today's high tax levels, investors are turning to tax-free Municipal Bonds for income that they love.  
If you have a taxable income of \$10,000 or more, you may be well repaid by investigating the advantages of tax-exempt State and Municipal Bonds. For instance, if you file a single return on a taxable income of \$14,000, you would have to receive a dividend return of 7.45% on a tax-free security in order to equal the yield from a 3.55% tax-free bond. It's something to think about!  
Our New Booklet, "How To Profit Through Tax-Exemption" explains in plain language your need for tax exemption, tells how much these high grade investments can be worth to you. There's no obligation. Send for copy today, or phone.  
**FIRST OF MICHIGAN CORPORATION**  
BUNIL BLDG. DETROIT 26  
WO 3-2085  
Grand Rapids, Flint, Bay City, Lansing, Port Huron, Battle Creek