



TOM HEWITT SHOWS Ed Kirbert the 1906 Columbia Electric automobile model which he is completing to be shown along with 23 other models at the International Convention of the Y's Men's clubs of the Young Men's Christian Association at Michigan State College July 11-16, 1954. The Y's Men of Michigan will have a display showing the industrial might of this great state to representatives from 27 different countries.

Vaughan Students See Exhibits at PTO Open House

Last Monday night the parents of Vaughan Elementary children saw a display of the visual aids program, during open house before the regular P.T.O. Meeting, which has been an important part of the daily classroom procedure. Some of the outstanding displays were a Bird Exhibit consisting of stuffed birds brought by the children and loaned by the Cranbrook Museum, Bird pictures, Audubon Charts, Bird Eggs, Bird Nests, and a map of North and South America used to find the places where birds migrate. Other exhibits were, Maps of Canada, Michigan and United States; Science tables; Michigan Historical displays; a Vaughan Market; Shell collections. A film of Canada was shown in the hall during the visiting hours.

Mrs. Flint gave a talk on "The year in Review". Miss Shepherd presented two numbers from her recent minstrel Show and Mr. Schrot told the parents about the art displays in the halls.

ON MAY 31RD, Mr. Cook's sixth grade class left in the morning to visit Windsor schools. The early departure was necessary due to the difference in time between the two cities. The trip was made by bus, via the Ambassador bridge and back through the tunnel.

The group was met at the Canadian customs by principal West and escorted through Windsor to the King Edward School, where the group stayed for the geography class and heard current events program. In conducting the class, Mr. Cook's class saw a "America" then the other class

B'HAM ECCENTRIC
Thursday, May 13, 1954

Page 5

Hills Golf Team Beats Avondale, Bows to Waterford

By PABBY McLEAN

Bloomfield Hills Golf Team defeated Avondale High School in a match Wednesday, May 5. The game was played at Stoney Creek Golf Club in Bloomfield Hills. Team members playing were Ted Watson, Dave VanEvery, Carl Morrow, and Ralph Garlick, and the final team score was 193 to Avondale's 213.

Bloomfield's good fortune didn't last until Friday of the same week when they lost to Waterford High School, Carl Morrow, Ted Watson, Mike Strong, and Dick Armstrong played for the team, but regardless of the fine performances of the low medalists, Dave VanEvery and Strong with 46 and Watson with a 47 the team lost.

WITH THE COMING of the spring season many plans are constantly in the air throughout Bloomfield's rooms and hallways. There have been a series of meetings concerning the Junior-Senior Prom, but as yet the only news that has leaked out is that the date is set for June 5th. Members of Phi Sigma Tau are planning basely for the Mother and Daughter Banquet to be held this month. The theme is to be centered around Alice in Wonderland, members of the choir will furnish part of the entertainment and a chicken dinner will probably be served. Choir members are working very hard at the present time preparing the graduation program and the seniors are anticipating the events of graduation evening.

★ Smile a Minute . . .
Repairman: "Shall I install a loud or soft horn, sir?"
O'Leary: "Just one with a dirty sneer."

Southfield Bands Join To Play Spring Concert

By ERIC LEIGHTON

Southfield schools' elementary and high school bands gave their spring concert Wednesday evening, April 12. Elementary handsmen opened the program with "Faith of Our Fathers", "Marine Hymn" and "Abdantino". The high school "B" band followed with two numbers by Buchtel, "Field General March" and "Masquerade Overture", and "Activity March" by Benmet.

The high school band opened their portion of the program with "Emblem of Unity March", by Richards. The other members included "Romantic Tone Poem", "Jesu, Joy of Man's Desiring", "An American Scene Overture", and the bouncy "Festival Hop."

One of the feature numbers was "Introduction and Tarantella", by Searmolin, which featured clarinet soloist Bob Meuthel.

AT THE MID-POINT of the program, a string ensemble was scheduled to play, but the first violinist's instrument was broken and this portion was omitted.

The band finished with "The Gladiator March", "Ouvre Ton Coeur", "Funiculi Funicula", "Blue Tango", and a novelty number, "Hey Pedro."

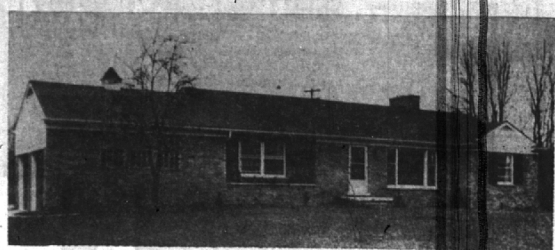
For this closing number, the lights were turned off for a minute, and when they were turned on they revealed the band dressed in somber and serapes and apparently asleep.

The conductor shouted "Hey, Pedro!" to the gourd player, and every section in turn awakened the next section until the rhythm of the piece was complete.

Then the conductor hailed the first trumpet player, and the piece was on its way.

THE NUMBER ended in like manner, with each section dropping off, yawning, and going to sleep, until only the conductor and gourd player were left. Finally, they too gave up and fell asleep.

"BRAES of BLOOMFIELD"



- Three large bedrooms • two baths
- Spacious carpeted living room with fireplace
- Full-sized basement with recreation space
- Walnut lake privileges
- Birmingham Schools • Taxes only \$170.00

A fine value at \$28,500 including storms and screens

HOWARD T. KEATING

MAPLE CORNER LAHSER

Midwest 4-5900

INSURANCE - BONDS THE BIRMINGHAM AGENCY

INSURANCE for EVERY NEED

Phone MI 4-2422

106 S. Woodward - Birmingham

Chas. B. Randall

Oscar P. Peterson

AFTER we sell we SERVE

BIRMINGHAM SCHOOLS



This attractive ranch home is on a large fenced lot that has been lavishly landscaped; lily pool and picnic grill.

Call for an appointment today.

\$23,000.

Nice-sized living room with fireplace and dining room. Fine kitchen. Two bedrooms and bath plus powder room. Screened and glosed-in breezeway. Beautiful 25' recreation room with handsome Monel metal sink and mirrored bar.

Carpets and storms and screens included. Taxes less than \$200.00 a year.

298 S. Woodward Birmingham Midwest 4-6300

WATT, MANUEL & SNYDER INC.
Realtors

BIRMINGHAM BLUE PRINT AND SUPPLY CO.

W. S. McAlpine, Prop.
Chas. C. Anderson, Mgr.
• Blue Prints • White Prints
• Photostats • Transparents
QUICK SERVICE

while you wait—or pickup & delivery

Ph. MI 4-3738

Located in Birmingham Opposite

Wigley's—426 S. Woodward

Open Weekdays & Saturday A. M.

WE AIM TO PLEASE

Operator of 20 Years Experience

For wall-over effects

.....DRAW DRAPERIES

To Beautify Your Home

Excellent Workmanship — Prompt Service

FABRICS

- Chromespun
- Fiberglass
- Sheers
- 3-D Woven Textures
- Metallics
- Prints
- Nylon
- Traditional, Scenic, Moderns
- Bamboo

KIRSCH DRAPERY HARDWARE

Inferior Decorators At Budget Prices
See Our New Line In Your Home

Quimm's inc.

Open Thursday, Friday Evenings
2875 N. WOODWARD — 3 Blocks South of 12-Mile



IF IT'S CHARM YOU'VE BEEN LOOKING FOR!

Bay window overlooks beautiful garden.

100 foot lot, with many trees.

Fireplace in 19 foot living room.

Two bedrooms.

2 car garage.

PRICED TO SELL \$18,500



COMFORTABLE LIVING

3 bedrooms & a dressing room.

Fireplace—Full dining room.

Eating space in kitchen.

Glassed & screened porch.

Spacious rooms throughout.

90 foot fenced yard.

2 car garage.

ONLY \$16,400. Terms available.

WALSH, JAMES & WASEY CO.

REALTORS since 1918

431 S. Woodward, Birmingham

Midwest 4-6500

BLOOMFIELD VILLAGE



This beautiful brick and fieldstone colonial, on a wooded corner lot and beautifully landscaped, is one of the most outstanding homes in the Village. Quanton School.

corner Washington Road

Immediate possession.

\$51,700.

Large living room with fireplace, dining room and paneled library. Four spacious bedrooms and three baths plus dressing room and nursery. Splendid kitchen with eating space. Full basement includes recreation room with fireplace, bar and sink, and ping pong table.

Built-in refrigerator, stove, disposal, carpets, drapes and curtains throughout. Fine closets. Storms and screens. Two-car garage. Sprinkler system.

WATT, MANUEL & SNYDER INC.
Realtors

298 S. Woodward Birmingham Midwest 4-6300