

## To Help You Survive Dangers of Tornadoes

In the last 15 years the Birmingham fire department has participated in the relief of nearby areas struck by tornadoes or "twisters". Most of the relief we have furnished has been our portable lighting unit and man power to help in the search for victims.

The sequence of these tornadoes is: In 1939 the Beech road area, approximately one mile north east of Birmingham; the River Rouge and Windsor City areas, 1946; the Flint tornado, June 8, 1953.

Members of the fire department have worked in those areas immediately following the storms and the pattern is always the same.

Whether it has been wood frame buildings, brick or cement block buildings, the destruction has been complete and devastating. A study of the areas shows the only safe place during a tornado is a basement, deep ditch out of line from any buildings or heavy objects, or some other place below the surface of the earth such as rock cellars.

Basements have been particularly observed. The contents have been intact in most cases even though the structure above was blown away or crushed.

There are three ways people can detect the approach of such a storm.

One is by general radio or television warnings, communications from one family to another or by telephone.

Two, is by the observation of the sky and the forming or approach of one or more cone shaped tubes connecting the earth to the nearest cloud.

Three, during most thunder squalls and wind or rain storms, when hail starts falling, conditions are right for a tornado. This is the best detection when it is dark.

Hail stones are formed by the sudden rise of warm air from the earth's surface through colder layers of air above. This causes condensation and rapid release or expansion through the colder layers. The hail stones become heavier and drop to the earth.

Should any one of these preliminary warnings occur, families having basements, grab flashlights, extinguish all fires, set thermostat on automatic furnace as low as possible. Do not shut gas off at the meter—any gas leaks which might develop would readily vent itself in a wrecked house. If there is a heavy table or bench in the basement, push it to a spot under a window and get under it, until the storm has passed.

If no table or other heavy object is available, do not stand or sit in the center of the basement but crouch or sit near a wall, preferably near a window of the southwest or northwest corner.

\*Grade floors on the basement walls will not push straight down for they are larger than the basement area. They will sag in the middle but usually arch to the outer walls. Basement windows make access during rescue operations much easier.

In the future if one of the above mentioned warnings are received or noticed Play It Safe! Retire to the basement. If your neighbors should have a home without a basement, invite them to share your protection during such a storm.

Prepared as a public service by members of the BIRMINGHAM FIRE DEPT.

## SHIRTS LAUNDERED 1 DAY SERVICE

BIRMINGHAM CLEANERS

Woodward at Adams Rd. We Give S&H Green Stamps



## It's Time To Have Your RUGS STAR-CLEANED!

Over and over again... your floor coverings are made dumping grounds for spilled food, and dirt. They need that happy trip to Star Carpet Cleaning Company NOW... Where they will be restored to their original brightness and clean-ness. You'll be surprised at Star's low prices, and you'll be delighted with Star's superior workmanship. Phone Star Today!

# STAR

CARPET CLEANING CO.

Phone Enterprise 6172—no toll charge

Rug and Carpet Cleaning Exclusively For 61 Years!



**TODAY IS BARGAIN DAY**—The cost of new Life Insurance goes up with age. When you put off buying that extra insurance you need you lose the advantage of today's lower rate.

6-54

## MANUFACTURERS LIFE

INSURANCE COMPANY

Branch Offices

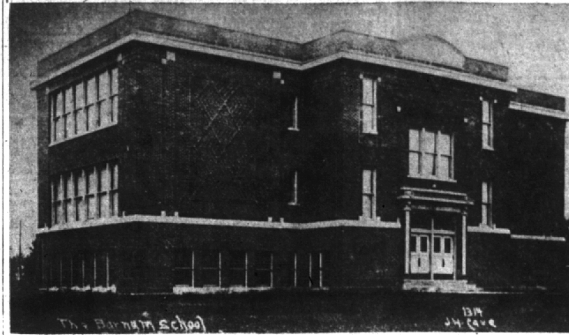
1880 Penobscot Building, Detroit 26  
Wm. M. Mitten, C.L.U.—Branch Manager  
Telephone: Woodward 1-3191

Birmingham Representative: David K. Falvey, C.L.U.

Each spring most of us plant new flowers and shrubs in our yards, thus to beautify the place where we live. Likewise, each day provides us with the opportunity to plant kind words and acts in the "yards" of others... thus to beautify Friendship's Garden.

## BIRMINGHAM BACKGROUND

• Local History in Story and Picture •  
As Compiled and Written by RUTH ANNE SILBAR



BARNUM JUNIOR HIGH BEGAN AS A 6-ROOM BUILDING

Photo from Stanley Ford Collection

## School Named for Blacksmith

Now lost within the subsequent addition which surround it, the original Barnum school was built in 1913 and named after an early time village blacksmith, Horace Barnum, who owned the property on which the school now stands.

The original schoolhouse was enlarged in 1924, 1929 and the latest addition, begun in 1953, is now completed.

Need for another school building in Birmingham became apparent in 1911 when the village's one and only schoolhouse (later known as Hill school) was found to be overflowing because of the rapid increase in Birmingham's population.

Grade school rooms held between 50-60 pupils at this time. Birmingham's population in 1911 was about 1,600 and almost 500 school children were crowded in the rooms of the Birmingham schoolhouse.

At that time, the school board thought three rooms would be sufficient to meet the needs of the

## Fire Losses Less Than a Year Ago

Fire losses in Birmingham during the first quarter of 1954 were considerably lower than the same period in 1953, a fire department report shows.

During the first quarter of 1953, losses were estimated at \$164,780 compared to \$3,968 this year.

Largest contribution to the high 1953 total was the Lawson lumber fire on Feb. 14. The number of fire runs made by the department during the two periods is almost the same—111 in 1953 and 108 in 1954.

FIRE CHIEF Vern Griffith's report for April this year shows fire losses are down from March. In March losses were estimated at \$2,225, in April \$750.

## FOR THE FINEST IMPORTED AUTOMOBILES

Visit

FALVEY SALES AND SERVICE

22600 Woodward Ave. Ferndale

Phone Lincoln 3-5000

## TYPEWRITERS ADDING MACHINES REPAIRED

New and Rebuilt Typewriters For Sale—Rentals

Birmingham Printing

369 East Maple, Ph. 4-4740

# The Birmingham Eccentric

SECTION 3

Thursday, May 13, 1954

## Plans Announced For Summer Da-Y Program At YMCA

The Birmingham YMCA will operate for the sixth consecutive year its DA-Y program for girls and boys eight through 14 years of age from June 21 through August 6 for the first period and August 9 through August 27 for an abbreviated period of time.

Each day, Monday through Friday, the youngsters will be engaged in a new adventure under adult supervision and leadership. Total costs of the program will include transportation, fees, craft materials, instructions, insurance and milk at noon luncheon.

The approximate time of operation is from 9 a.m. to 4:30 p.m. each day except when the group is out on overnight hikes and for evening activities. Specific program activities of the group include factory trips, boating, canoeing, swimming, hiking, cook-outs, overnights, craftwork, sight-seeing tours, a trip to Bob-Lo and other places of interest.

Registrations are now being taken by the "Y" and the group is limited to a total of 70 youngsters.

FOR THOSE youngsters involved in Little League play, tutoring, music lessons and the like, the "Y" is operating a grounds program from 10 a.m. until 3 p.m. for its members.

The "Y" softball league will play twice weekly from June 3 through July 29 on Monday and Thursday nights. Any young men interested in signing with one of the teams is invited to contact the "Y".

The program from August 9 through 27, operating for 15 days, Monday through Friday will feature trips of interest, crafts and swimming in chlorinated pools.

rather than the lakes of Oakland County.

Brochures covering all the activities may be had upon request from the "Y" and will be available May 13 although preliminary announcements, cost breakdown and general notes can be had now.

## Ask Patch Program

Mayors William H. Harvie has instructed City Administrator Leonard Watchowski to proceed with a patching program for Lathrup Village's paved streets as soon as possible. Harvie revealed the state gasoline tax return to Lathrup for the first quarter of 1954 of \$7,226.61 doubled the city's return for the last quarter in 1953.

## Named Director Of GM Styling

William L. Mitchell, 678 Woodward, has been appointed director of the GM styling section, succeeding Howard J. O'Leary, who is leaving the company after 33 years service. Mitchell joined General Motors styling section as a designer in 1935. Two years later, he was placed in charge of the Cadillac design studio. He was on military leave with the Navy from 1942 to 1946, attaining the rank of lieutenant commander while in the service. In 1945 he was named Chief Designer of the Cadillac Studio and in July 1953, he was named assistant director of the styling section.

Birmingham's Only Exclusive Fur Store  
30 Years On Woodward

## For Dependable Certified Cold FUR STORAGE

- Cleaning
- Remolding
- Repairing



100% Insurance Coverage

**Dimas Furs**  
MI 4-3930  
227 S. WOODWARD AVE.  
BIRMINGHAM, MICH.

## If Sleeping Pills

Don't Help... CHECK your

## Mattress & Boxspring

Could be that either or both are responsible for lack of sleep. If either sag, or are too firm, are not level or have sprung springs, we'll pick them up in the morning and deliver them that evening, completely...

## RENOVATED IN 1 DAY

## OXFORD MATTRESS CO.

37 Years in Oakland County

Phone—Dial O ask for Enterprise 6310  
FOR ESTIMATES 332 W. HURON  
PONTIAC MI 2-7695

## "Those In The Know...."



GO!  
for  
235  
H.P.

Drivers wise to the ways of the road, don't give a hoot for hundred-plus speeds. But, they want horsepower and more horsepower to get them safely out of the tight spots. And, in the CHRYSLER they go for that dynamic 235 H.P. engine that keeps them out of trouble. Those in the know go for this exclusive CHRYSLER power that whisks them along as smoothly and quietly as an owl in flight. And they don't overlook the aerodynamic sleekness of Chrysler bodies that would justify any wise old bird (wise to the marks of beauty) to preen his feathers. Come in today for proof of this fact.



## KELLER-KOCH, Inc.

479 S. Woodward Ave.

MI 6-1200

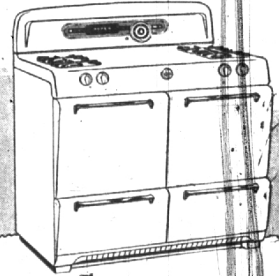
Your BEST BUY for COOKING is America's No. 1

## Gas Range



## ROPER

It's TOPS in QUALITY, VALUE, STYLING and FEATURES



Model Shown \$249.75 ONLY

Here's a wonderful cooking feature Roper for 24 hours continuous cooking. You'll marvel at its extra capacity, superior performance, and exceptional convenience. Come in and see this new ROPER GAS RANGE. Don't be misled when you learn how easy it is to own that beautiful range during this SPECIAL SALE!

## CHECK THESE FEATURES

- ALTRON "CENTER-SIMMER" TOP BURNERS
- "SPECTRO-MATIC" BURNER CONTROL
- "SILENT-ROLL" STORAGE DRAWER
- AUTOMATIC OVEN HEAT CONTROL

You can get a ROPER GAS RANGE for no more than you'd expect to pay for an ordinary range.

COME IN...SEE THEM TODAY!

MG-3889-34

CONSUMERS POWER COMPANY