

Maple Cagers Subdued In Regional Tourney

By Jim Kraus

Bowing out in the first round of the regionals the Birmingham basketball team was handed a 49-44 defeat by the Berkeley Bears for the Maple final game of the season.

The game was a nip and tuck battle all the way, but the Maples just did not have enough to stop Berkeley's 6 ft. 5 in. center Dick Radatz, who scored 26 points for the Bears and was the difference between victory and defeat. Every time the Maples tied or got within one or two points of Berkeley, Radatz led his team ahead.

Birmingham got off to a slow start and by the end of the first quarter trailed 11-8. Then in the second quarter Mike Groves and Dick Muller led the Maples to a 22-22 tie at the half.

In the third period Radatz hit from all angles, and by the end of the stanza Berkeley led again 37-33. Although the Maples tried desperately in the final quarter to even the game, they fell short.

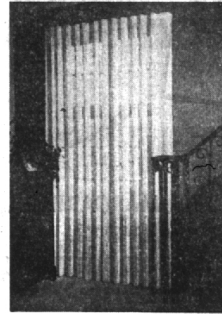
BOX SCORE

BIRMINGHAM 44		Free Throws	
Goals	Throws	Goals	Throws
Don Dorough	4	3	3
Payson Chapman	1	1	1
Dick Muller	6	2	2
Chris Christie	3	2	2
Mike Groves	4	1	1
	18		8

BERKLEY 49

Don Biggot	2	0
Bob Blackwell	1	0
Dick Radatz	12	6
Max Roe	1	0
Lewis Lemark	1	0
Jerry Dedoes	2	1
	20	9

BAMBOO DRAPES



PRICE

\$15.30

For Pair Shown

fine

quality

For Perfect Light Control
And Year Around Use
Natural or Colors

Beautiful . . . Economical
Made and Installed by Bessengers

- VENETIAN BLINDS
- WINDOW SHADES
- DRAPERY HARDWARE

CLEANING AND RETAPING ON SHADES & BLINDS
Write or Phone for Free Estimates LI 1-1936

BESSENGER'S

23535 WOODWARD AVE. Near 9 1/2-Mile Rd.

Science Students Of Cranbrook Prepare Exhibit

Opportunities for good living in the Detroit metropolitan area are being portrayed in a Planning Progress exhibit prepared by the students of the Cranbrook Academy of Science and being shown at the Detroit Historical Museum.

The exhibit points out the new industrial pattern which calls for decentralization of industrial activity into scattered moderate sized plants which calls for new organization of neighborhoods and communities as living areas.

Included is a comprehensive display of metropolitan area recreational resources and programs along with regional connections of the expressway system.

AERIAL photographs are used extensively in the exhibit to depict progress of construction and development.

The Cranbrook students developed the exhibit from materials supplied by the Detroit city plan commission, the Detroit area regional planning commission, the Hight-Hinton metropolitan authority, the Wayne County road commission, the Michigan state highway department, and the Michigan conservation department.

The project was directed by Robert Snyder.



OFFICERS OF SOUTHWESTFIELD high school's 75 voice Robed Choir prepare an inventory of the group's costumes in preparation for a planned road trip in early April. The choir which has gained prominence during its two years' existence will attempt an experimental tour to public schools and colleges throughout the state. The tour, which will have as its theme, "This Land of Freedom," will take the singers to Adrian, Hillsdale and Reading, according to Don Blodstad, director. Officers shown above are (left to right) Jim Gudenhart, secretary; Chuck Williams, vice-president; Lee Cobb, treasurer; and Betty Ann Breiling, president.

Teen-agers Model For Fashion Show At High School

In a teen-age fashion show presented by a Detroit department store in the Birmingham high school little theater last Monday, 41 girls, chosen from 116 by three fashion experts from the store, modeled complete spring and summer wardrobes.

The girls were given exercises in walking and standing properly and were also fitted for the clothes to be modeled in two trips to Detroit preparatory to the show. Monday a dress rehearsal was held in the little theater.

OF THE 116 girls who tried out those chosen to participate in the show were Rosemary Barnhart, Lynn Bennett, Donna Hobeau, Pat Bozoz, Nancy Buckmaster, Noel Cloutier, Judy Collins and Phyllis Duff.

Nancy Dowd, Janice Eskew, Mary Goode, Carole Goodhue, Linda Gray, Carolyn Hutton, Kitten James, Sylvia Koudelorsky, Elsie Leitch, Hester Lewis, Ann Makenson, Sue McCumber, Ann McDonald, Trudy McKewen, Marilyn Menewich, Carolyn Menewich, Myra Moxley, Bev Ostermeyer, Sandy Overgard, Pat Palmer, Joanie Polhemus, Betty Quilian, Rosalie Rue,

Cranbrook Writers Gain 67 Awards

Sixty-seven prizes in the recent Scholastic Writing Awards contest in Southeastern Michigan went to students at Cranbrook School and Kingswood School. Submitting more than 450 of the contest's 5,557 entries, the two schools gained awards in 22 out of 31 possible categories. In the one-act division, Cranbrook School boys won all of the keys (first place), and eleven out of 13 awards.

Particularly outstanding is Donald Meier, who received four keys and four second and third place awards, setting the best 1954 record in southeastern Michigan.

English Students Stage Legend of Sleepy Hollow

The Legend of Sleepy Hollow was recently presented in room A-102 by the students of Mrs. Freda Ward's fifth hour English class. Under student direction of Jim Mosby, the class used a student revised script and recorded the play on a tape recorder.

Noel Stankoy acted as Ichabod and Helen Chaney played Katrina while Hester Lewis and Pat Marshall furnished sound effects.

The play was so successful that Miss Ward's third hour class is making plans to present it also.

Jean Buslander and Ann Shenfield.
Pat Sullivan, Mary Tamm, Judy Vander Pys, Judy Van Horn, Barbara White, Ann Willett, Liz Williams and Julie Winter.

STERNAL'S
for
RCA Television Radios and Record Players
FREE CUSTOMER PARKING
In Rear of Store
Open Friday evening to 9:00

Birmingham LOCKSMITH Service
Midwest 4-7939
DAY AND NIGHT
CITY-WIDE SERVICE
Auto-Home-Office-Luggage
256 S. Woodward

POTTER
Moving & Storage Co.
136 Brownell
Phone MI 4-4612

no. 1 specialist in long-distance moving!
call for ALLIED VAN LINES, Inc.
No. 1 on U.S. Highways—No. 1 in Service—No. 1 in Your Community

ADVERTISING
Looking for Something?
SAWS
FOR HOME OR BUSINESS NEEDS
LOOK IN THE 'YELLOW PAGES' OF YOUR TELEPHONE DIRECTORY

Pontiac Puts a New Low Ceiling on Fine Car Cost!



IMPRESSIVE FINE-CAR SIZE. Now you can take everything along. Pontiac is bigger than cars costing much more, providing roominess and riding comfort unapproached at its price.

Price the car that brings luxury within easy reach of all!

You'll never find a better buy than this big, powerful, luxurious Pontiac—yours at a price near the very lowest on any new car.

Take size. You will have to go way up on the price scale to match Pontiac's bigness—the key to its distinguished styling, spacious comfort and remarkable riding ease.

Take luxury. No car at any price employs finer appointments, fabrics and leathers—or combines them with such smart, colorful distinction.

Take performance. Even better, take a ride, and discover a new high in

smoothness, quietness and handling ease. And remember, Pontiac miles are thirty miles—thanks to low fuel consumption and unsurpassed reliability.

Then look at the price tag for final proof that Pontiac has lowered the ceiling on luxury to everybody's level. Do it soon!

DOLLAR FOR DOLLAR YOU CAN'T BEAT A

PONTIAC

WILSON PONTIAC-CADILLAC, Inc.

275 North Woodward Ave.

Phone Midwest 4-1930 and JOrdan 4-6655

DON'T MISS DAVE GARROWAY—EVERY FRIDAY, 8 P.M.—WWJ-TV—CHANNEL 4

Betty Furness says:
"Here's the Secret of Good Cooking."
Get This Bargain Today at
MILKS APPLIANCES

Westinghouse ANNOUNCEMENT SPECIAL

COOKING THERMOMETER SET \$250 VALUE
Only 88¢ LIMIT ONE TO A CUSTOMER

Roasting, deep fat and cooking thermometers

SEE Westinghouse RANGES WITH NEW ELECTRONIC UNIT

that remembers . . . even if you forget!

GET PROOF that foods can't burn or even scorch with new Westinghouse Electronic Unit on 1954 Commander Ranges.

Model 80 Illustrated
\$45 PER WEEK
after small down payment* Be modern... cook electrically!
*Other Westinghouse Electric Ranges as low as \$199.95. Only \$1.99 per week.

YOU CAN BE SURE...IF IT'S Westinghouse MILKS APPLIANCES

1435 S. Woodward MI 6-1300
OPEN DAILY 9 TO 9