

# Wrigley's KOOL-KRISP VEGETABLES ARE REALLY FRESHER!



Through intensive research, Wrigley's has developed a new, revolutionary method for keeping fruits and vegetables fresher. This accomplishment was made possible through the use of "Ice Channels" stable thru the use of "Ice Channels" taken above a metal rack packed to the brim with chopped ice. It employs the very simple principle that cool, moist air travels downward and sideways, keeping the produce at a constant temperature and humidity. That is why you are assured of KOOL-KRISP Vegetables being REALLY FRESHER!

**FLORIDA All Green Pascal CELERY** Giant 24 Size **19c**

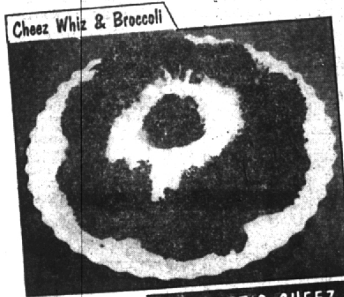
California Fresh CARROTS 3 Lge. Bun. 25c  
 Fresh Yellow Florida SWEET CORN 5 for 39c  
 Fresh Mushroom MUSHROOMS Pint Box 29c  
 Fresh Cuban PINEAPPLE Giant 9 Size 89.35c  
 Top Frost - Fresh Frozen BROCCOLI 5 10-oz. Pkgs. 95c



**FANCY Red Ripe Florida Outdoor Grown TOMATOES** **29c lb.**

**FLORIDA Red NEW Washed and Waxed Grade A POTATOES** U.S. No. 1 10 lb. **49c**

**CALIFORNIA Sno-White CAULIFLOWER** Giant Size 10 Heads **29c**



Try **KRAFT'S CHEEZ WHIZ** on KOOL-KRISP Vegetables

**KRAFT'S CHEEZ WHIZ**  
 8 Oz. Jar **33c** 16 Oz. Jar **59c**

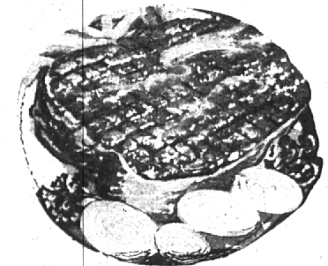


**BUTTER** Hollybrook Creamery Double Wrapped Lb. **69c**  
**LARGE EGGS** Lily Brand Doz. in Grade "A" Carton **59c**  
**MARGARINE** Keyko 1-lb. Ctn. Yellow in Qtrs. **28c**

**Famous NORTH BAY AGED CHEESE** 2 Years Old **69c lb.**

U. S. Graded Choice **T-BONE STEAKS** lb. **99c**  
 Mich. Milk Fed **VEAL ROASTS** Shoulder Cut Knuckle Bone Removed lb. **43c**  
 Tender Young **PORK LOIN ROAST** First 7 Rib Cut lb. **45c**  
 Fresh Lean **GROUND BEEF** Fat Meat Lb. or Hamburger lb. **39c**  
 Boneless, Skinless **COD FILLETS** Pan Ready lb. **29c**

Naturally Tender Table Trimmed **SIRLOIN STEAKS** U.S. Graded Choice **89c lb.**



Naturally Tender-Table Trimmed **ROUND or SWISS STEAKS** U.S. Graded Choice **79c lb.**



**RECIPE Pink SALMON** Tall 1 Lb. Can **43c**

Wide, Med. or Fine **Egg Noodles** 16-oz. Cello **29c**  
 Mueller's **Thin Spaghetti** 16-oz. Pkg. **21c**  
 Mueller's **Elbow Macaroni** 16-oz. Pkg. **21c**

1/2 Price Sale! 2 Reg. 50c Size Banded **O-CEL-O SPONGES** **69c** \$1.00 VALUE!

15c Coupon Inside Can Good on Next Purchase **SWIFT'NING** 3-lb. Can **87c**  
 Wrigley's Orange Pako **TEA BAGS** 48-ct. Pkg. **39c**

VISIT THE NEW! WRIGLEY MARKET in Dearborn—Opening Mar. 9th 5120 Schaefer near Michigan

**STOKELY'S Hawaiian PINEAPPLE** Sliced • Chunklets • Crushed

your choice **4** No. 2 Cans **\$1.00**

**CONTADINA TOMATO PASTE** 6 Cans **49c**  
**SWIFT'S PREM Luncheon Meat** Slice it! Dice it! Bake it! Fry it! 12-oz. Can **43c**  
**COLOSSAL RIPE OLIVES** Mount Whitney 3 Tall Cans **\$1.00**  
**PILLSBURY'S ANGEL FOOD CAKE MIX** Pkg. **49c**  
**HABITANT PEA SOUP** Large 2 1/2 Can—21c 2 15-oz. Cans **25c**  
**NABISCO PREMIUM SALTINE CRACKERS** 4-in-1 1 Lb. Box **27c**

**Hi Protein BREAST O' CHICKEN TUNA** Chunk Pack **3** Cans **\$1.00**



**Great Big Tender GREEN GIANT PEAS** Picked at the Peak of Flavor **2** 303 CANS **35c**

**NIBLETS** Whole Kernel **CORN** 12 Ounce Vac. Pack Cans **2 For 33c**

**TUNE IN EVERY DAY! WRIGLEY'S Exciting RADIO & TV FEATURES**

**LADY OF CHARM** 10 a.m.—Mon., Wed., Thurs. Fri. WXYZ-TV, Channel 7  
**CISCO KID** 7 p.m.—Thurs.—WXYZ-TV, Channel 7  
**Tony Martin Song Parade** 9:45 a.m.—Mon. thru Fri.—CKLW  
**Ginger Rogers Show** 12:45 p.m.—Mon. thru Fri.—CKLW  
**Music Time with Dick Powell** 1:45 p.m.—Mon. thru Fri.—CKLW  
**Peggy Lee Picks the Tunes** 2:45 p.m.—Mon. thru Fri.—CKLW

**Super Value HAZEL LEE COOKIES** Sugar • Raisin Big 10-Oz. Pkg. **29c Ea.**

