



Thin of Rind and Thick with Meat - A Sweet Mealtime Treat

# Wrigley's VINE RIPENED CALIFORNIA CANTALOUPES



Smooth • Rich • Creamy  
**TOP FROST ICE CREAM**  
All Flavors  
Half Gallon  
Flavor of the Month: **CHERRY PINEAPPLE**

**SLICED STRAWBERRIES**  
**LEMONADE**

Top Frost Frozen 4 10 oz. \$1.00 Pkgs.  
Top Frost Fresh Frozen 7 6 oz. \$1.00 Cans

Famous Bright's Brand  
**JUMBO 27 SIZE**

**29¢**

**WATERMELON** Red Ripe Cannonball lb. 6¢  
**POTATOES** U. S. No. 1 California Long White—Grade A 10 lbs. 69¢  
**LEMONS** CALIFORNIA SUNKIST Giant 125 Size 5 for 29¢  
**PASCAL CELERY** LARGE SIZE Per Stalk 29¢  
**CARROTS** CALIFORNIA PACKAGE 2 1-Lb. Pkgs. 29¢



**OUTDOOR GROWN TOMATOES**  
14 oz. Cello **19¢**



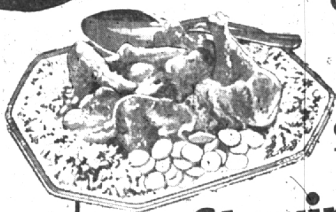
**CAVERN MUSHROOMS**  
Pieces and Stems

**5** 4 oz. Cans **\$1.00**

It's New and Delicious  
**ARMOUR'S CHOPPED BEEF** 12-Oz. Can **33¢**  
**NABISCO PREMIUM CRACKERS** 4-in-1 lb. Pkg. **25¢**  
**MAXWELL HOUSE INSTANT COFFEE** 2 oz. Jar **69¢**



**PILLSBURY'S Best FLOUR**  
10 lb. BAG **89¢**



Completely Cleaned  
**TENDER Young Rocks**

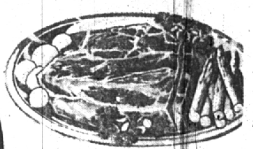
4 to 5 lb. AVERAGE

**Stewing Chicken 43¢ lb.**

All One Quality All Top Quality

Fancy Quality **OVEN READY CAPONS**  
5 to 7 lb. Avg. **69¢ lb.**

**PORK LOIN ROAST** Tender, Young 1st 7 Rib Cut lb. 47¢  
**GROUND BEEF** Lean, Fresh - For Hamburgers, Meat Loaf lb. 39¢  
**PORK STEAK** Tender, Lean - Cut from Small Boston Butts lb. 63¢  
**SLICED BACON** Arnold's Lean Hickory Smoked lb. 77¢  
**WHITE FISH** Dressed & Fresh lb. 53¢



Naturally Tender Table-Trimmed  
**BEEF ROAST**  
U. S. Grade Choice  
Blade Chuck Cut **43¢ lb.**

**STOKELY'S FINEST HONEY POD PEAS** 2 303 Cans **29¢**

SAVE 14¢ A POUND OR MORE!  
**WRIGLEY'S COFFEE** 3-Lb. Bag \$2.95 1-Lb. Bag **99¢**

NATIONALLY ADVERTISED - Chase and Sanborn  
**COFFEE** Hills • B-Nut • W. House • Maxwell • Del. Do • Del. Monte 1-Lb. Can **\$1.09**



**STOKELY'S Finest APPLESAUCE**  
3 303 CANS **49¢**



**HUNT'S California PEACHES**  
4 Tall or Halves 303 Cans **59¢**



**WELCH'S Pure Concord GRAPE JUICE**  
3 Large 24 oz. Bottles **\$1.00**

**DONALD DUCK GRAPEFRUIT JUICE** 2 Giant 46 oz. Cans **35¢**

5 String **KITCHEN BROOM** ea. **89¢**

Wolverine All-Purpose **CLEANER** Pint 29¢ Qt. **49¢**

Heavy Galvanized **10 QT. PAILS** Triple Seam ea. **59¢**

**NORTHERN TISSUE** 6 ROLLS **49¢**

**CAP Imported CORNED BEEF**  
12 oz. CAN **35¢**



**WRIGLEY'S MEL-O-SPRED MARGARINE**

2 1 lb. Ctn. in Qtrs. **43¢**

**WRIGLEY'S Creamed COTTAGE CHEESE** 16-oz. Ctn. **19¢**

**WRIGLEY'S Old Fashioned Country Cheese BUTTER** AA-93 Score 1-lb. Ctn. in Foil Qtrs. **65¢**

**HOLLYBROOK Pure Creamery BUTTER** 1-lb. Print Double Wrapped **59¢**

**WALKER'S Pure CLOVER HONEY** 16-oz. Glass **25¢**

**KRAFT'S Assorted CHEESE SPREADS** • Ranch • Pimento • Olive • Pineapple 2 5-oz. Jars **45¢**

**Michigan Mild PINCONNING STORE CHEESE** lb. **39¢**



★ **635 SOUTH WOODWARD** ★

Open Thursday, Friday and Saturday 'Til 9 p.m. ★