

Rising Tide of Students Prompts Bond Proposal

An ever-increasing wave of new student enrollments in Birmingham district schools has resulted in the third request since 1949 for a bond issue exceeding \$3,000,000 to finance expansion of school facilities in the district.

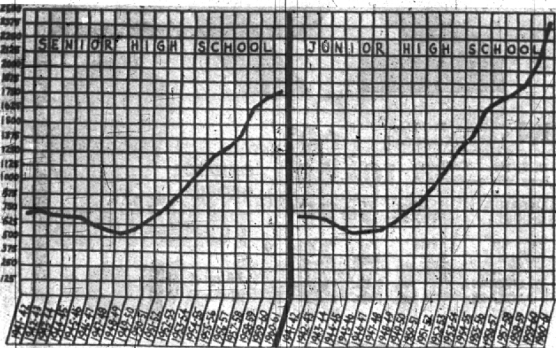
The home building surge beginning at the close of World War II has brought an influx of young families with small children into the district at a rate that has kept school officials busy trying to work out problems of overcrowded classrooms.

FIRST FELT ON THE elementary level in district schools, the wave of students is now approaching secondary schools. As a result, the high school and the junior high school are jammed to capacity.

To relieve crowding in these schools, the board of education will ask district voters on June 14 to approve a bond issue of \$3,500,000 to build a new junior high school and an addition of 19 rooms to the present high school.

While no increase in the tax rate will be brought about by approval of the issue, voters will be asked to approve the diversion of 4 mills from a \$3,100,000 bond issue passed in 1949 to the new issue.

THE REDUCTION ON THE 1949 millage has been made possible by increased valuation in the district which has enabled the board of education to pay off enough of the 1949 bonds to reduce the millage required to meet the remaining payments. Under the June 14 proposal, the present school debt levy would remain at 11 mills. In 1952, a bond issue for \$3,300,000 was approved at 4 1/2 mills.



THE GREATEST CRISIS now facing Birmingham schools is in the junior high school. Barnum junior high was built to accommodate 850 students. Next fall the seventh, eighth and ninth grades (which make up the junior high school in Birmingham's system) will total 1500 students. To house them the ninth grade will continue to occupy space in the high school which originally was planned to house grades 10 through 12. The above chart shows the high school and junior high school enrollment curves. Supt. of Schools Dwight B. Ireland states that without another building program, there will not be enough facilities to house the secondary students within another year. In a temporary move to house junior high school students next year, facilities are being provided at Adams school for 150 seventh graders. Ireland said the only adequate solution to the problem is a new junior high school and an addition to the present senior high school.

AT THE MAY 27 meeting of the Friends of the Baldwin Library, Charles Kass was named president of the organization for the coming year. Serving with him will be William W. Williams, vice president; Mrs. Brooks Marshall, secretary; and Joseph P. Little, treasurer. Williams was among the four new directors elected by the group on April 22, when Mrs. James F. Mitchell, Richard W. Brown and Frederick L. Robinson were also named to the board.



★ Smile a Minute...
Because their motor was being mangled a little, the two tourist girls—garbed in very brief shorts—drove into a small town garage and stepped from the convertible. Whereupon the old shop foreman gazed at a young mechanic, who had stopped his work to gawk, and growled, "Come, come, Orville! You're a motor expert, not a body man—remember!"

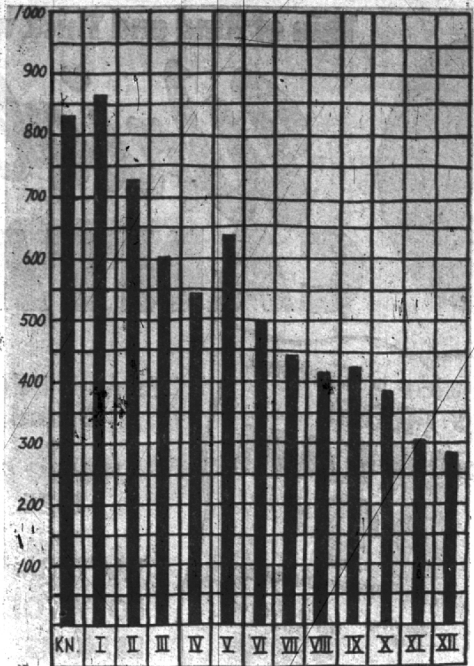
COUNTER & SINK TOPS
Expertly Installed with
• LINOLEUM •
• FORMICA • VINYL •
Estimates without obligation

T. E. HOGAN CO.
2862 Woodward Ave. LI 4-3306
3 Blocks South of 12 Mile Open Friday till 9 P.M.

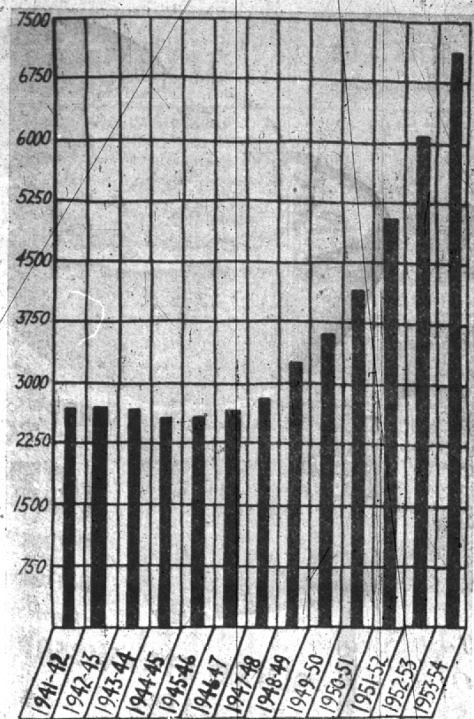
We Give 5 & H Green Stamps

Mary Thornton ANTIQUES
Early American Antiques
COLLECTOR'S ITEMS
PRIMITIVES

Telegraph Bld. (U.S. 24) and West Long Lake Rd.
Bloomfield Hills, Michigan
P. O. Box 173, Birmingham Telephone MI 6-2430



THIS IS AN ANALYSIS of student population in Birmingham district schools today. As 285 students leave school by graduation this spring, nearly 850 students move up from kindergarten into the first grade. Next fall over 900 children are expected to enter kindergarten. Coming behind this year's graduating class is an ever-heightening wave of classes. The swell of enrollments now is reaching the junior high and senior high school levels. Including the ninth grade there will be 1,600 students housed in the high school where facilities were planned for 1250. If the bond issue is approved, eight classrooms can be provided by February 1955. The remaining 11 classrooms planned in the building program will be available about a year later. Even with passage of the bond issue, school officials are planning on a crowded high school for the next two years.



THIS CHART INDICATES that the student population in the Birmingham school district has nearly tripled in the last 12 years. Fairly static in 1912 when about 2,700 youngsters attended schools, the district has become dynamic with 7,000 students attending at the present time. Beginning in 1916, enrollments have swept upward in ever increasing velocity. School officials see no end to the present trend. Supt. Ireland said the board of education's present request for a bond issue to finance additional school facilities will solve only the pressing problems of the present.

STERNA'S
for
WHIRLPOOL WASHERS AND DRYERS
FREE CUSTOMER PARKING
In Rear of Store
Open Friday evening to 9:00

NEED SOMETHING FOR YOUR HOUSE? Then locate it by reading or using the Classified Ads in The Eccentric each week.

NOTICE OF ANNUAL ELECTION
TO THE QUALIFIED ELECTORS OF THE SCHOOL DISTRICT OF THE CITY OF BIRMINGHAM, OAKLAND COUNTY, MICHIGAN:

NOTICE IS HEREBY GIVEN, that the annual election will be held in the School District of the City of Birmingham, in the County of Oakland, and State of Michigan, on Monday, the 14th day of June, 1954, from 7:00 o'clock A.M. to 8:00 o'clock P.M., for the purpose of electing:

- 2 members of the Board of Education to serve 4 years each, and to vote upon the following propositions:
 - Shall the School District of the City of Birmingham, County of Oakland, State of Michigan, borrow the sum of not to exceed Three Million Five Hundred Thousand Dollars (\$3,500,000) and issue its bonds therefor, for the purpose of paying the cost of erecting and furnishing a new Junior High School building and an addition to the Senior High School building, and acquiring a site for said Junior High School building and sites for elementary school buildings, in said school district?
 - Shall the limitation on the total amount of taxes which may be assessed each year against property in the School District of the City of Birmingham, County of Oakland, State of Michigan, for all purposes except taxes for the payment of interest and principal on obligations incurred prior to December 8, 1932, be increased as provided in Section 21 of Article X of the Constitution of Michigan, for a period of twenty (20) years from 1954 to 1974, both inclusive, by 1/10th of 1% (\$4.00 per \$1,000) of the assessed valuation as equalized, for the purpose of paying principal and interest on bonds aggregating not to exceed \$3,500,000 in principal amount, to be issued to pay the cost of erecting and furnishing a new Junior High School building and an addition to the Senior High School building, and acquiring a site for said Junior High School building and district, including the establishment of a reserve for the payment of said principal and interest?

NOTICE IS FURTHER GIVEN, that the following persons have been nominated for the office of member of Board of Education:

Wylie E. Groves
Richard A. Sauerbrun

NOTICE IS FURTHER GIVEN, that the voting places for said election will be as follows:

- Precinct No. 1—Adams School
- Precinct No. 2—Quarlan School
- Precinct No. 3—Barnum School
- Precinct No. 4—Pierce School
- Precinct No. 5—Fountain School
- Precinct No. 6—Bloomfield Village School
- Precinct No. 7—Walnut Lake School
- Precinct No. 8—Birmingham High School
- Precinct No. 9—Torty School

NOTICE IS FURTHER GIVEN, that the Board of Education of said school district has estimated the amount of money necessary to be borrowed for the project for which the said proposed bonds are to be issued, is Three Million Five Hundred Thousand Dollars (\$3,500,000).

The following statement has been received from the County Treasurer as to previously voted increases in the total tax rate limitation affecting taxable property in the school district: to-wit:

Shall the County School District of Oakland County, State of Michigan, come under the provisions of The Special Education Act, which statute is designed to encourage the education of the handicapped children; Provided, that any annual property tax levied for the administration of this Act shall be limited to one-half of one mill?

AMOS F. GREGORY
Secretary of the Board of Education
of said school district

Dated: June 1st, 1954

the towel with the "miracle margin"

by **MARTEX**

first time ever—a towel with DACRON reinforced selvages for longer wear!

\$1.29
bath towel 24" x 44"
guest towel 60" face cloth 35"

a new kind of towel!
a new high in value!

Dacron-reinforced! Right down both selvages where strain on towels is greatest. As you know, Dacron* puts up terrific resistance to stretching and abrasion. By weaving Dacron along the selvages, Martex adds substantially to the life of your towel.

Bigger—and better! This towel has 88 sq. inches more absorbent terry than ordinary towels at the price. Gives you more in size and quality. Woven by famous Dacron—this terry is wonderfully fluffy and absorbent.

In Martex dycatorator colors! These lovely fashion colors everyone admires and covets. Choose your colors, hang up your new Martex towels—and watch your bathroom glow with fresh color.

Come see these exciting new towels—better stock up for your family today!

In Martex fashion-famous colors:
Aure Walnut
White Pldnum
Nile Green Sunflower
Spruce Azalea
Apricot Bon Bon Pink

Dacron-reinforced selvages are lighter colored than the body of the towel. Look for the Martex "Stripes of Strength."

Jacobson's

Home Decorative Shop
WOODWARD AT WILLETS — BIRMINGHAM