

# Inspection For Protection

## City's Taxicabs Get Rigid Check

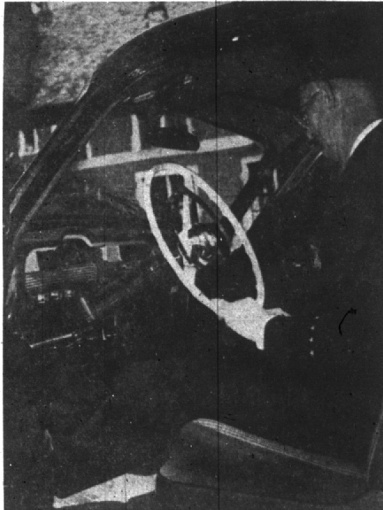
Patrons of the two Birmingham taxicab companies are protected safety-wise, comfort-wise and money-wise by regular inspections of all city cabs by the Birmingham police department.

Backed by a city taxicab ordinance, police have the authority to enforce mechanical standards, appearance, riding comfort and accuracy of meters.

To control the service provided by the cab firms, regarded as public transportation utilities, the police department also is empowered to make spot checks on the length of time a cab responds to a call and the safety measures taken by the driver.

To make sure cabs are kept in good mechanical condition and do not become eye-sores, Police Lieutenant DeLyle Service makes a thorough inspection of each cab every three months. Through close cooperation with cab company owners, their services have been steadily improved in recent years.

Cars which do not meet ordinance requirements are cited by the police department and owners must rectify the conditions pointed to before the inspection is approved.



### Here's How It's Done

**LT. DELYLE SERVICE** is a busy man at taxicab inspection time as the pictures above reveal. The Eccentric photographer found that the four steps in the inspection pictured here are but a few of the check points made on every city taxicab every three months.

**IN THE TOP PHOTO**, Lt. Service begins filling out the report on a cab as he questions the firm's owner, Clarence Johnson.

**CENTER LEFT**—The exterior of a cab is one of the first steps in the inspection. Here Lt. Service notes license plate, firm name, cab number, and rear tail lights. Other points checked are headlights, condition of the body and other exterior safety features.

**CENTER RIGHT**—Mechanical operation must meet a rigid test. Here Service tests spacing of the brake pedal, steering wheel and driver's seat. Here he also examines the interior for cleanliness and comfort.

**LOWER LEFT**—The final OK for an approved cab is the sealing of the meter after tests on a marked two-mile course have assured Service that the meter is functioning correctly.

Besides the inspection of the vehicle at a standstill, Service rides in the cab to check comfort and safety of brakes and other features of the cab's operation. (Eccentric Photos)

### Back In Hands Of Zone Board

Further delay in the proposed development of property on the northeast corner of 16 Mile and Adams road was promised at a special meeting of the Troy township zoning board Monday night.

Board members referred George A. Glover's revised plat of Thornwood subdivision back to the township zoning board for study and recommendation.



Hugh C. White

217 Pierce St.  
Opposite Municipal Bldg.  
Birmingham, Mich.

## BURGLARS LOVE VACATIONS

Especially when they're yours! \$15 a year for \$1,000 theft coverage buys PEACE OF MIND ON YOUR VACATION

**HUGH C. WHITE**  
MULTIPLE LINE INSURANCE AGENCY  
Insure—Stay Insured and Rest Assured



Bill Roberts

Telephone  
Midwest 4-3610

# PEABODY'S SUPER MARKET

154 HUNTER at MAPLE

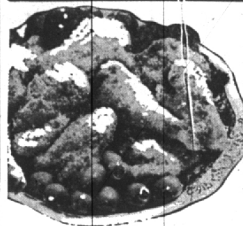
MI 4-5222

Open every evening except Saturday  
Sunday Hours: 10 a.m. to 8 p.m.

Free Parking, Front and Rear of Store

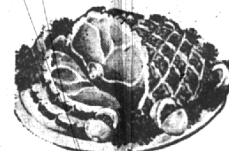


PRIME, TENDER  
**BEEF POT ROAST** 45<sup>c</sup> lb.



Fresh, Farm-Dressed  
**FRYERS** 45<sup>c</sup> lb.

We Have A Choice Selection OF **AGED PRIME BEEF**



Pre-Cooked **SMOKED HAM**  
SHANK END 59<sup>c</sup> lb.

Lean, 7-Rib Cut  
**PORK LOIN ROAST** 49<sup>c</sup> lb.

KEYKO  
**OLEO** 27<sup>c</sup> lb.

**CRISCO**  
3 POUNDS 87<sup>c</sup>

HEINZ  
**KETCHUP**  
14 Oz. Btl. 24<sup>c</sup>



**CABBAGE** HOME GROWN . . . . . POUND 5<sup>c</sup>  
**ONIONS** ITALIAN SWEET . . . . . POUND 29<sup>c</sup>  
**Honey Dew Melons** LARGE . . . . . EACH 49<sup>c</sup>  
**CARROTS** CRISP 'N TENDER . . . . . 2 BUNCHES 19<sup>c</sup>  
**BEETS** HOME GROWN . . . . . 2 BUNCHES 23<sup>c</sup>



**Del Monte PEACH HALVES** 2 No. 2 1/2 Cans 59<sup>c</sup>  
**Del Monte CREAM CORN** . . . . . 2 Cans 33<sup>c</sup>  
**Yacht Club TOMATOES** . . . . . No. 2 Can 17<sup>c</sup>  
**Vege-Crest VEGETABLE COCKTAIL** 28<sup>c</sup>

**CANE SUGAR**  
5 lbs. 49<sup>c</sup>

• TIDE •  
• RINSO •  
• SURF •  
Lg. Pkg. 27<sup>c</sup>

**HILLS BROS. COFFEE**  
POUND \$1<sup>09</sup>

**BISQUICK**  
2 1/2-lb. Box 39<sup>c</sup>

**BIRDS EYE FROSTED FOODS**  
**ORANGE JUICE**  
2 6-oz. Cans 35<sup>c</sup>

**PEAS**  
10-oz. Package  
2 for 33<sup>c</sup>

**CAMPBELL'S TOMATO SOUP** 10<sup>c</sup>

**Pure Maple Syrup** . . . . . 1 Quart \$1.29

**Hellman's Mayonnaise** . . . . . Pt. 41<sup>c</sup>

**WHITE TUNA** Chicken of the Sea . . . . . Can 41<sup>c</sup>

**Land 'o Lakes DRY MILK** 1 lb. Jar 36<sup>c</sup>

**MINUTE MAID** 6 oz. Cans  
3 Lemonade  
1 Limeade  
PACK 53<sup>c</sup>

# PEABODY'S