

Put Beauty, Comfort In Garden Planning

By ALICE WESSELS BURLINGAME
Special Writer for The Birmingham Eccentric

Birmingham is rich with fine gardens, many created by husband and wife teams as "their way of life." Not only are they creating a setting for their home but hours of compatible companionship.

I recently visited the home of the Hans Scholins at 127 Cambridge. There the visitor enters the garden site across a driveway over a bridge with a rapid flowing stream, then up a winding stone steps to a charming house on top of the embankment.

Four years ago when this project began it received vision as the approach to the gardens was a lush marshy area which required 650 loads of fill dirt to bring it to its present level.

Later the stream needed disciplining and on its bank the Scholins have built an artistic rock garden along each broken cement piece.

"The stream of their winds around in an interesting design and now has a path of stepping stones to invite you to stroll. Along this path is a large collection of wild flowers.

THIS THREE acre site is being developed by a "Friendship Garden" and already you will see choice wild flowers. Bare hills have already "checked in," while aside from their roll domestic animals have a family of possums and four racoons.

This garden within our community is already a sanctuary which is being shared. Those with hillside garden construction problems would benefit by a visit to them. Mrs. Scholins claims that the plant material is truly "all Birmingham," as she gathers in everybody's excess plants to work toward making for garden a real place of beauty.

The Marcus Cunningham Garden on Shady Lane is another garden with a keynote which could be called "vistas."

The home is nestled among hills and dales with a series of intimate gardens which invite a stroll. The garden furniture color is turquoise and gives an accent in most of the intimate gardens.

OFF THE study in the home is room-size garden enclosed with evergreens and interesting shrubs, with spring bulbs and perennials giving interest to the ground level in the beds. A winter tree is by the exit.

A wide selection will place of mature evergreens does a three dimensional effect, assure a winter interest and nesting sites for birds. Under a grouping of hemlocks I saw a large circle of hosta or funkia.

This plant loves the shade and the leaves have a handsome texture. A perennial it has spikes of white lily-like flowers which appear in August and September. This plant likes rich woody soil. It is easy to propagate by dividing the loads of fill dirt to bring it to its present level.

Down a steep hill at Cunningham's an interesting path has been built with hemlocks on either side. There were violas, forget-me-nots, creeping phlox, many kinds of sedum, pansies and myrtle.

AT THE BOTTOM of the hill was the family picnic area with a grill built right into the hillside off the stone terrace. I like the picnic tables under a shelter. Turquoise color was prominent on this feature and glamorized the wooded picnic spot.

As you wander along the curved paths of this beautiful garden, there is a feeling of peace away from the hubbub of traffic.

This is a mature garden, ready to give back to the owners many dividends of beauty, the reward of a well planned garden which is not "too busy."

I nearly missed the former playmate of an interesting garden. It has brown stained shingles and in front were masses of pink enchantment geraniums. It is now a tool house.

Strolling around to the front of the property we enjoyed studying the turquoise colored window boxes filled with clematis, geraniums and Martha Washington geraniums.

TO THE LEFT of the circular drive was a long vista and at the time a double, floating-crab gave a distinct keynote.

Across the roadway from the property was a large football field "for the boys" enclosed with evergreens. The footers could sit in comfortable lounge chairs.

Here was a well established estate which gave the garden visitor a lesson in the mature appearance of the material they are selecting for their new homes.

An emphasis could be given on the importance of vistas to be developed from home windows and terraces, and a warning to the new garden recruit to allow for the mature size of plant selections and to not have the design "too busy" to assure the peaceful effect given at the Cunningham garden.

Have You Met
New residents of 26880 Willowgreen drive, Franklin Village, Mr. and Mrs. Ellis J. Pecora and children, Marjorie, Carolyn and William? A member of Zeta Tau Alpha and Phi Kappa Phi, Marjorie was graduated from Michigan State college Sunday. The family moved from Detroit, where Truman is executive engineer of the Chevrolet division of General Motors corporation. He pilots his own seaplane and especially enjoys making trips into uninhabited regions of Canada. Another family hobby is skiing.

IT'S A COPYBOOK RULE!
MARK SCHOOL and COLLEGE CLOTHES WITH CASHES WOVEN NAMES

IT'S A tradition that school and college-going young folks must mark their belongings with Cash's Woven Name Tapes. Sure identification—at home or away. Cash's Names have saved untold losses in laundry, hats, umbrellas, gloves and other possessions. Be sure to order them in plenty of time for attaching before school starts.

PRICES
6 doz. \$2.75
9 doz. \$3.25
12 doz. \$3.75
24 doz. \$5.75

30-30 Content for patching names
35c a tube

The F. J. Mulholland Company



THE BANJO PLAYER
A typical de Erdely drawing

World Famous Artist Has Exhibition Here

Drawings by a former instructor of the Birmingham Women Painters and Cranbrook student, Francis de Erdely, is the featured artist in the exhibit which highlights the fourth anniversary of Peggy De Salle's Little Gallery on East Maple.

A native of Hungary, de Erdely has gained much popularity in this country. He is represented in the permanent collections of museums in Madrid, Barcelona, The Hague, Brussels, Antwerp and Ghent.

Prior to coming to this country in 1938, de Erdely had firmly established himself in European art as among the permanent collections in Detroit, Los Angeles county.

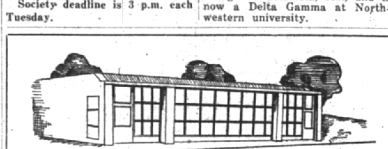
TELEVISION SERVICE
Open Evenings 7:30-9
MI 4-8705
Trained technicians assure you of satisfactory service... uninterrupted TV viewing.

ELECTRONIC SERVICE
We Give S & H Green Stamps
1265 S. Woodward Open 8 a.m. to 6, 7:30-9 p.m.

Denver, Pasadena and San Francisco musicians.
He has won two European awards and 30 in this country.
A graduate of the Royal Academy in Hungary, he continued art studies in Paris and Madrid before coming to the States. Many of his paintings have been purchased by members of Europe's royal families, including Spain, Holland and Belgium.
His travels have taken him all over the world and his exhibits have been seen in nearly every country he has visited.

NOW A resident of California, de Erdely is professor of fine arts at the University of Southern California in Los Angeles, a post he has held since 1945.
In discussing his current exhibit at the Little Gallery, Mrs. De Salle said it was probably the most important display she has scheduled.
"This artist, well known in the Birmingham-Detroit area, is among the world's best," she commented. "He has been called 'great' by the world's leading art critics, and is frequently referred to as the 'Van Gogh of Hungary.'"

Society deadline is 3 p.m. each Tuesday.

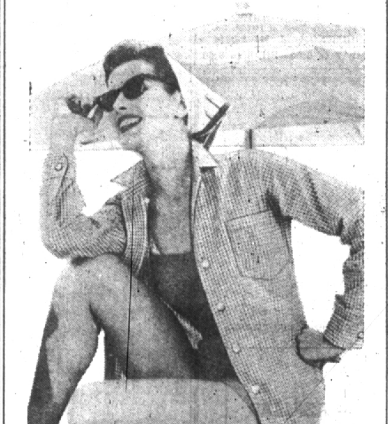


Spring Air
MATTRESSES and BOX SPRINGS

Wieland's
UPHOLSTERY DRAPERIES
523 N. Woodward Ave., Phone MI 4-2530

Your favorite playmate!
Lady Manhattan

GINGHAM SHIRTS
... right off his back!



Cool, colorful Gingham is no longer for men only! Famous Lady Manhattan® creates a feminine version of the light, trim Gingham Shirt for every smart girl. You'll want several of these shirts — superbly tailored in the 97-year-old Manhattan® tradition!

The F. J. Mulholland Company

June 10, 1954 THE BIRMINGHAM ECCENTRIC Page 5
ELLIOTT FURNITURE COMPANY
Located on East Side of Dixie, 1/2 Mile South of Waterford
FINEST UPHOLSTERING
Our thirty years in Pontiac is your guarantee of satisfaction. Our upholstering craftsmen are experienced tradesmen qualified to refinish and restyle, if necessary, your most treasured pieces. Reupholstered furniture may also be refinished in our complete cabinet and finishing department. Slight additional charge for refinishing. Our material and fabric selection is complete.
CUSTOM MADE FURNITURE
5390 Dixie Highway Phone Orlando 3-2641



CAN'T SLEEP?
CHECK your
Mattress & Boxspring
Could be that either or both are responsible for lack of sleep. If either sag, or are too firm, are not level or have sprung springs, we'll pick them up in the morning and deliver the that evening, completely...

RENOVATED IN 1 DAY
OXFORD MATTRESS CO.
37 Years in Oakland County
Phone— 522 W. HURON FOR ESTIMATES
Dial O ask for Enterprise 6310 PONTIAC PE 2-7695

This vacation... treat yourself to
Samsonite Luggage

It's made to "take" rough handling!
It carries your clothes Wrinkle-free!
It's better than leather finish wipes clean with a damp cloth!



JOURNEYER... \$27.50
MEN'S TWO-SUITER... \$25.00
LADIES' ONITE REGULAR... \$19.50
LADIES' WARDROBE (shown open and packed)... \$25.00
All prices plus tax

No wonder Samsonite is America's most famous traveler! It's expensive-looking, and expensively made. Beautiful on the inside... and blessed with a rich better-than-leather finish that wipes clean with a damp cloth. Yet you can have TWO pieces for less than you'd expect to pay for just ONE piece of such quality luggage! See for yourself... today! Samsonite is also available in Saddle Tan, Colorado Brown, Bermuda Green, Admiral Blue and Rainbow finish

Samsonite LUGGAGE
MAKES THE FINEST
Gifts for Graduates
WE'RE FEATURING A COMPLETE LINE FOR GIRL & BOY GRADUATES
The F. J. Mulholland Company

SAVE
Vacation Time!
Vacation Dollars!



IN Michigan's VACATIONLAND
There's so much more to enjoy and more time to enjoy it— vacationing in your own Michigan. You avoid days of costly, tiresome long-distance travel and fill them instead with superb fishing, golfing, swimming, riding, boating, camping. And Michigan prices are easy on vacation budgets! Write today for free Michigan vacation literature.
BE CAREFUL—DRIVE SAFELY

MICHIGAN TOURIST COUNCIL
ROOM 8
CAPITOL BLDG.
LANSING 1, MICH.
Michigan—Water, Wonderland

Mulholland's
Features for the Swim Season



McGREGOR BEACH PARTY SWIMWEAR
Cut a handsome figure in 3-D... McGREGOR's 3-D Tartan pattern Caribe! Smart as usual... Tartan Lotion! Bases Disciplined Fabric. Tailored trunks have zipper front, extension waistband, built-in support. \$5.00.
It's figure-cut for action! The "narrow look" in swim trunks... Sidezip in exclusive fade-free Black Madras. \$6.00.
Belt and lure look real as life. The exciting Minity pattern. Handsome boxer model with all-elastic waist, inner support. \$5.00.

Mulholland's Men's & Boys' Department