

Kroger Leads Again With a New Low Price!

HYGRADE'S "Old Fashioned"

Sliced Bacon 58¢

For that special breakfast treat, serve lean, crispy "Old Fashioned" bacon with Kroger Farm Fresh Eggs and Fried Potatoes.



U.S. Gov't Graded "Choice"



Chuck Roast

43¢

Kroger-Cut Tender to give you more meat for your money... less bone less waste. The Tenderay method makes finest U.S. Choice Grade Beef tender without ageing.

Blade Cut
Lb.

- Rib Roast . . . Always fresh and tender because it's Kroger Cut Tenderay U.S. Gov't "Choice" . . . lb. 68c
- Boiling Beef . . . Serve Beef Stew A Low Cost Dinner . . . lb. 10c
- Ground Beef . . . Ground from High Grade Beef for Top Quality Lb. 45c . . . 3 lbs. \$1.19
- Leg O' Lamb . . . Tender, young, genuine Spring Lamb Serve with Carrots & Potatoes . . . lb. 83c
- Rolled Veal Roast . . . Young Milk-Fed Veal. No Bones, No Waste. An Economical Buy! . . . lb. 53c



- Fresh Eggs Kroger Grade "A" Large . . . Doz. 47c
- Banquet Chicken Whole Chicken In Gravy . . . \$1.39
- Hormel Chili With Beans 1 lb. can 29c
- Liberty Cherries Maraschino 4-Oz. Bot. 19c
- Kroger Bread Small Family Loaf 1 lb. loaf 15c

Libby's

Tomato Juice

25c

Flavorful, Fragrant Juice from Choice Tomatoes. The Kiddies Love It Cold

46-Oz. Can



- Hamburger Relish Heinz 11-Oz. Jar 29c
- Tomato Soup . . . Heinz Tops for Lunch . . . 3 cans 35c
- Frost-it . . . Frost Your Cake the Easy Way . . . 13-Oz. Jar 19c



Libby's DEEP BROWN Beans

10c

The Beans with that Wonderful Sauce. So Deep-Down GOOD. Rich in Flavor . . . Uniformly tender!

14-Oz. Can

Sweet Peas Libby's! Extra Tender! Quick-Canned to Preserve Their Natural Flavor! 3 No. 303 Cans 49c

Cream Style Corn Libby's—Brown from Libby's Strains developed for tenderness 3 No. 303 Cans 49c

Libby's

Pink Salmon

49c

Delight Your Family with a Salmon Casserole or Salmon Croquette Tonight

1-Lb. Can



- Salad Oil . . . Kraft—For Delicious Salads . . . Pt. 39c
- Ammonia . . . Little Bo Peep . . . Qt. 23c
- Cheer . . . New, Blue CHEER . . . Lge. Pkg. 30c
- Ripe Olives Mt. Whitney Calceat . . . 8 1/2-Oz. Jar 37c
- Tuna . . . Breast O' Chicken Chunk Pack . . . 8 1/2-Oz. Can 39c

Dinty Moore

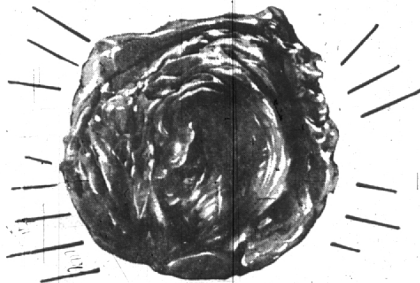
Beef Stew

24 Oz. Can 39c

For a quick-fix-meal that the whole family can enjoy, serve Dinty Moore Beef Stew



- Dreft . . . America's First Detergent . . . Lge. pkg. 30c
- Cleanser . . . Sunbrite . . . 3 cans 29c
- Swiftning . . . Swift's 5c Off! . . . 3 lb. can 79c



ICEBERG HEAD

Lettuce

14¢

Tender and Crisp—Mild in Flavor
Crisp Lettuce Salad Adds Zest to a Meal!
Fresh and Well Trimmed

Lge. 24 Size Head

- Green Beans So Fresh They Break with a Pop! Southern Grow! 2 lbs. 35c
- Cucumbers Florida—Long Crisp, Fine for Salads! . . . 2 for 13c
- Oranges . . . California Sun-kist Valencia 200-220 Size . . . Doz. 49c
- Potatoes California Long White In 10 Pound Space Helmet Bag . . . 10 Lb. Bag 69c
- Carrots . . . Delicious in Stews! or Sliced for Salads! . . . 2 Cello Pkgs. 29c

Dofeland Farms, Velvet Brand, or Glacier Club

Ice Cream

79c

Half Gallon



Prem Swift's 12-Oz. Can 49c	Pork Sausage Swift's 10-Oz. Can 51c	Beef Hash Swift's Corned Beef 1-Lb. Can 33c	Chili Con Carne Swift's 1-Lb. Can 27c	Vienna Sausage Swift's 4-Oz. Can 19c	Corned Beef Swift's 12-Oz. Can 49c	Roast Beef Swift's 12-Oz. Can 53c	Beef Steaks Swift's for Sandwiches 13-Oz. Can 57c
Wishbone Italian Style Salad Dressing 8-Oz. Bot. 39c	Mixed Nuts Buster Brand 8-Oz. Can 49c	Tide Detergent Lge. Pkg. 30c	Rice River Brand 1-Lb. Pkg. 17c	Lipton, Vanilla Frostee Dessert 2 Pkgs. 27c	Nabisco Peanut Creme Patties 6 1/2-Oz. Pkg. 29c	Peanut Butter Swift's 11-Oz. Jar 37c	Peanut Butter Swift's 20-Oz. Jar 59c
	Duz Large Package 30c	all FOR AUTOMATIC WASHERS	24-Oz. Box 39c 25 lbs. \$5.95	Lipton Sherbet Mix Pkg. 16c	Spic & Span For Easier Cleaning 1-Lb. Pkg. 25c	Joy Liquid Suds 6-Oz. Bot. 30c	Lava Soap For Greasy Hands 2 Bars 25c

We reserve the right to limit quantities. Prices effective through Sat., June 12, 1954