

Townships Study Incorporation Move

Moves to incorporate and annex portions of townships have caused township supervisors to take a long look into the future of their areas.

Fearful of piece-meal splitting up of township areas, both William Roesser of Southfield and Norman R. Barnard of Troy have called for studies to determine what action to take to preserve the identity of their townships.

Southfield has lost two local areas to incorporation within the past year and rumblings of further votes on local rule and proposed annexations continue to grow.

The pattern of attempts for municipal government closely resemble the cutting up of Royal Oak township into eight small communities in the past 30 years. Royal Oak township's area is now approximately one quarter of its original size.

THE RESULTANT patch-work quilt effect which includes the cities of Royal Oak, Ferndale, Hazel Park, Oak Park, Clawson, Berkeley, Huntington Woods and Pleasant Ridge has left these cities dependent upon each other for a source of water, sewage and rubbish disposal improvements, traffic studies and zoning matters.

In many instances these cities have grown without a proper balance of residential, commercial and industrial zoning to provide a sufficient tax base for city services.

Modern-day townships in South-eastern Michigan have attempted to protect their areas by establishing zoning and planning boards to plan their entire area as a unit.

While two attempts at incorporating the southern portion of the township have failed at the polls since 1951, rumors of further area incorporation such as Magnolia still persist.

ANNEXATION is also a constant threat to Southfield. Both the Cities of Oak Park and Berkeley seek room to expand and their only alternative is to press westward into Southfield.

After a rigorous campaign last year, Oak Park's bid to include a strip of township land which would have included the J. L. Hudson Northland Center, failed as Southfield voters defeated the plan by a wide margin.

Berkeley has long looked, with a coveting eye, on Southfield land

adjacent to the city's western border.

"If Southfield residents want city rule I believe that we have the start of an efficient municipal administration now, Roesser stated.

Troy's present problems are less acute than Southfield's, yet the threat of annexation by Clawson and possibly Birmingham is uppermost in the minds of township officials.

BARNARD reiterated the statements of Roesser when he furthered that if Troy people sought to escape township rule, possibly the best means would be found in some type of township incorporation.

A study committee for future growth of Troy has been called with each community naming its representative. No date has been set for the first meeting of this group.

Barnard said that township attorneys will be directed to help this committee make any recommendations it sees fit as members probe the various methods of incorporation.

Barnard explained that any annexations on Troy's borders would rob the township of valuable industrial property and place the burden of raising sufficient taxes upon the remaining residential property.

IN SOUTHFIELD, this question of tax base is also apparent.

"We have our own police and fire departments," Supervisor William Roesser stated. "We also have a department of public works, water department and active planning commission and zoning board."

"Here we have the nucleus of city government and would not have to start from scratch as did Lathrup Village and Franklin," Roesser added.

"If our people seek municipal rule, the question may best be resolved by incorporating the township as a whole before any more

Driver Fined \$65

Found guilty Friday at his trial before Birmingham Justice John J. Gaffin on a charge of driving under the influence of liquor. Henry C. Boler, 45, of 22 E. Martie, Flint, was fined \$65.

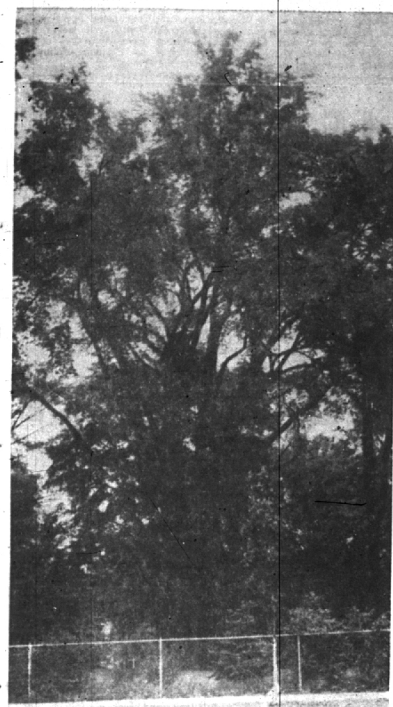
Gaffin on a charge of driving under the influence of liquor. Henry C. Boler, 45, of 22 E. Martie, Flint, was fined \$65.

Among the most cherished of Gifts

The spontaneous gift, given for no particular occasion, speaks so eloquently of one's friendship for another that we wonder these "no special occasion" gifts are not given more frequently.

Sometime soon, give a gift to a loved one—without waiting for a birthday, Christmas, or any other occasion. You'll discover it to be among the most cherished of Gifts.

La Belles
137 WEST MAPLE
Birmingham's Shop of Stationery, Gifts and Books
Air Conditioned for Your Comfort



THIS MORE-THAN-A-CENTURY OLD AMERICAN ELM is a candidate for the title of "The Largest Living Elm Tree in Oakland County". Estimated to be from 150 to 200 years old by Birmingham City Forester William LeBold, the tree is still growing on the lawn of the Harry Allens at 556 W. Maple. It measures 13 feet 2 inches around the trunk at 4 1/2 feet above the ground. The tree was entered this week in a contest being sponsored to find the county's largest elm. Persons wishing to enter trees in the contest may do so by sending a post card to William Aho, City Forester, 35 Hill Street, Pontiac, Michigan. Trees entered must be live, single trunk elms. Circumference of the tree must be carefully measured at 4 1/2 feet above the ground. Post card entries must include the finder's name, location of the tree and its measurement. The contest closes August 30. (Eccentric Photo)

The Peterson
FOLDA STROLA
Featherweight
Champ
ONLY 7 1/2 LBS.

IT FOLDS!

- Sturdy aluminum construction
- Quick, easy folding
- Lifetime nylon bearings
- Roomy, detachable shopping bag
- Adjustable, quilted footrest

LITTLE FOLKS SHOP
175 W. Maple
Birmingham

Air Conditioned
For Your Comfort

Edison Co. Seeks Cooperation in Protecting Wires

An education program aimed at warning public cooperation in safeguarding power lines from damage by trees will be undertaken soon by the Detroit Edison Company.

At a preliminary meeting with Detroit metropolitan area foresters, including William LeBold of Birmingham, officials of Detroit Edison said 95 per cent of electrical breakdowns in power lines are caused directly by trees.

Broken limbs and falling trees resulting from storms tear down overhead electrical lines and where numerous trees exist, such as in the Birmingham area, the possibilities of extensive damage is great, company spokesmen said.

THE COMPANY outlined a two-phase program designed to reduce this hazard.

Firstly, municipalities and home owners will be asked to cooperate to allow power companies to trim trees, and in some cases remove trees that threaten overhead lines.

Secondly, the company will conduct an educational program to encourage plantings in critical areas of trees that will not grow to such great heights that they will become dangerous to power lines.

City ordinances on planting were encouraged to aid in this type protection.

News copy submitted early is necessarily given preference, so the "early bird" usually gets the space.

FRANKLIN COMMUNITY CHURCH
(Methodist)
Robert J. Searles, Minister
Morning Worship—10:30 a.m.
26109 GERMAN MILL ROAD

FOR THE *Young* IN SPIRIT

... and in figure Gossard-deb boneless pull-on pants. A mere wisp of tissue net and satin elastic for a wealth of comfort and control.

White, Black, 14" \$5.95—White, Black, 16" \$6.95

Our plunging Flair bra with the famous elastic-design uplift that's so constant, so easy. Satin elastic with embroidered nylon sheer. White, pink, black.

AA Cup \$3.50 — A, B, C Cups \$3.95

The Glassford Shop
Personalized Service By Graduate Counselors
Store Hours:
Mon. thru Thurs. 9 to 5:30
Fri. 9 to Sat. 9 to 5:30

135 Pierce MI 4-5244

COUNTER & SINK TOPS
Expertly Installed with
• LINOLEUM
• FORMICA • VINYL
Estimates without obligation

T. E. HOGAN CO.
2865 Woodward Ave. I. I. 4-3306
3 Blocks South of 12 Mile Open Friday till 9 P.M.
We Give 5 & H Green Stamps

Clean Topcoats
Clean Overcoats
have no charm for moths!
... put them away clean!

SPECIAL
3 big days to save!
Thursday! Friday! Saturday!

TOPCOATS or OVERCOATS
cleaned and pressed

\$109 EACH

"Cash & carry"—or "Call & Delivery"

Ridley
CLEANERS

Call Lincoln 6-9500
Or visit Ridley's "Cash and Carry" store
361 E. MAPLE
Near Woodward

Bamboo Matchstick DRAPERY

SHADES CORNICES

OUR DRAPERIES INCLUDE... \$5.00 up per panel

- ★ Extra Heavy Webbing
- ★ Spacing Tape
- ★ Hemmed Edges
- ★ Extra Heavy Hooks

Rattan & Wrought Iron Furniture

Our Counselors Will Call With Materials, Advice and Samples, Day or Night.

PORCH SHADES
Columbia
LATTISHADES
Woven Wood

LINCOLN 6-3311 LINCOLN 3-4656

Quimm's inc.
Open Thursday, Friday Evenings
2875 N. WOODWARD — 3 Blocks South of 12-Mile

RECORDS

CLASSICAL & POPULAR

HI-FIDELITY and STANDARD RECORD PLAYERS
NEEDLES FOR ALL MAKES

WALTON'S
JEWELRY & GIFTS
154 W. MAPLE MI 4-3140