

People's Column

**Congratulates Us
On Editorial Award**

To the Editor:
Heartly congratulations on the National Editorial Ass'n's citation

to The Eccentric which certainly does its full part to place and keep Birmingham on the map. Real service in that cause of the common good.
I am especially interested since, as a boy, I daily heard the problems of a weekly newspaper discussed by my uncle J. E. Deal, publisher, and my father, business

manager, of the old Ann Arbor Courier. All success to you.
DEHULL N. TRAVIS,
1027 Forest

*** Smile a Minute . . .**
"Your husband gets a lot of sentiment out of his pipe, doesn't he?"
"Indeed he does. It's perfectly disgusting to see him clean it."

LEGAL NOTICES

**CITY OF BIRMINGHAM, MICHIGAN
NOTICE TO PROPERTY OWNERS
VACATION OF STREET**
Notice is hereby given that a meeting will be held in the Commission Room of the Municipal Building on Monday July 12, 1954, at 2 o'clock P.M. to hear suggestions and objections to the proposed vacating and abolishing of a portion of Elm Street, extending from the westerly line of Webster to the westerly line of the alley north of and parallel to Webster.

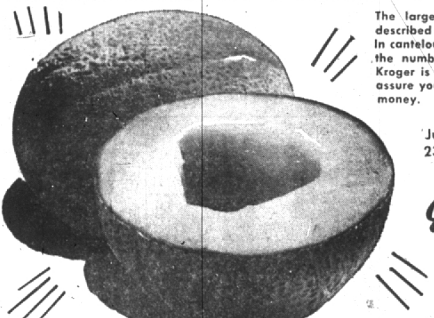
This notice is published in accordance with Chapter 51, Section 1 of the Charter of the City of Birmingham, and Resolution No. 728 (1954).
RESOLUTION NO. 728
Moved by Commissioner Heier, Seconded by Commissioner Roberts, WHEREAS, this Commission has been requested to vacate and abolish a portion of Elm Street, extending from the westerly line of Webster to the westerly line of the alley north of and parallel to Webster, and
WHEREAS, the Mayor has recommended that a public hearing be sched-

uled to consider such request.
NOW, THEREFORE, BE IT RESOLVED, that this Commission deems it advisable to consider vacating and abolishing that portion of Elm Street extending from the westerly line of Webster to the westerly line of the alley north of and parallel to Webster; being more specifically described as:
all that part of Elm Street, originally 50 feet wide, which lies north of a line drawn from the intersection of the westerly line of the alley north of and parallel to Webster, 50 feet wide, on a course South 89° 12' West 53.5 feet to the intersection

of the westerly line of said Elm Street with the westerly line of said Webster Street, and which lies easterly of the easterly line of Lot 44 of said "Adams Park Subdivision", and which lies southerly of the continuation westerly of the southerly line of the easterly line of Hunter division, on a course North 89° 12' West 53.5 feet to the intersection of said line with the westerly line of Hunter Boulevard, lies west of and adjoining Lot 41 to Lot 42, both inclusive, of said Adams Park

Subdivision, the property owned by your petitioners.
BE IT FURTHER RESOLVED, that this Commission shall meet Monday, July 12th, 1954, at 2 o'clock P.M. in the Commission Room of the Municipal Building for the purpose of hearing and acting on the petition of said petitioners.
Witness my hand and the seal of said City of Birmingham, this 7th day of July, 1954.
IRENE E. HANLEY,
City Clerk. (16-17)

Kroger Has The Values...Vine Ripened California
JUMBO CANTALOUPE



The largest melon you'll find in town. Sizes described by number can be very confusing. In cantaloupe they vary from 45 to 23. The smaller the number, the larger the melon. This week Kroger is featuring JUMBO 23 size cantaloupe to assure you of more luscious sweet melon for your money.

Jumbo 23 size
Each 26c

- Potatoes California Long White 15 lb. 99c
- Bananas Firm, mellow, golden ripe. Serves at breakfast. lb. 20c
- Pascal Celery California 24 Size 28c
- Fresh Carrots California sugar sweet. 2 16-oz. Bags 29c

- Lemons Big, juicy Sunkist For perfect lemonade. 6 29c
- Fresh Limes Ideal for those cool summer drinks. 6 19c
- Honeydews Sweet! Every melon guaranteed ripe! Large and luscious. Serve a bowlful for breakfast! 49c
- Blueberries 39c

Cherries FRESH BINGO Luscious and sweet at the peak of flavor. Buy a lug for canning or freezing. 20 lb. Lug \$5.49 **Lb. 29c**

Mon., Tues., Wed. . . . 9-6
Thurs., Fri., Sat. . . . 9-9

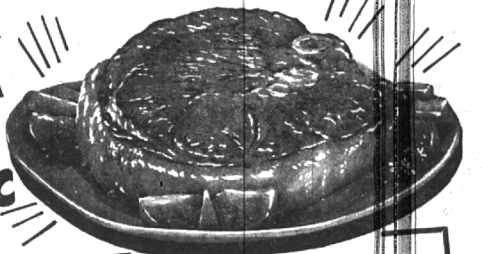
Freezer Beef Sale!
Frontquarters

120-150 lb. Frontquarters of Kroger Tenderay Beef, cut and freezer wrapped FREE of extra cost
Hindquarters 140-150 lb. avg. **Lb. 59c**

Large Bologna Glendale or Nichols-Foss. Any size piece. **Lb. 43c**
Salmon or Halibut Kroger Fancy Fillets **Lb. 69c**

U.S. GOV'T GRADED "CHOICE" KROGER-CUT TENDERAY
Swiss Steak

Chuck Roast U.S. Gov't. Graded "Choice" Kroger-cut Tenderay. Blade Cut **lb. 37c**



Tender shoulder cuts round bone roast for Swiss steak. **lb. 58c**
U.S. Gov't graded "Choice" Kroger-cut Tenderay standing rib. **lb. 68c**
Boiling Beef Tenderay **lb. 10c**
Zestees Just right for picnics 10-oz. Pkg. **59c**

Hygrade "Old Fashioned" Beef Bacon Sliced 8-oz. Pkg. **43c**
Ground Beef 3 lbs. **1.14**
"Choice" Kroger-cut Tenderay English Roast **lb. 49c**

"SO YOU'LL UNDERSTAND"
There are a limited number of shoulder round bone roasts for Swiss steak on each front quarter of beef. As roasts for Swiss steak are cut, more round shoulder bone additional fronts are cut, more round shoulder bone roasts will be available.

Swift's Prem
An ideal luncheon loaf for quick-fix snacks or no-cooking suppers.
2 12-oz. Cans 89c

- Corned Beef Swift's—Ideal for No-cooking Suppers. 2 12-oz. Cans **89c**
- Gulf Kist Shrimp Small Size for Cocktails. 5-oz. Can **36c**
- Pet or Carnation Milk 4 Tall Cans **51c**
- Duncan Hines White or yellow Cake Mix for Circus Cakes. Get free recipes at any Kroger store. 19-oz. Pkg. **35c**
- Watermaid Rice Serve boiled rice with 2 lbs. pkg. **33c**

Kroger Peaches Luscious yellow cling from California. Stock-up at this low price. **Large No. 2 1/2 Can 25c**

- Kidney Beans Avondale No. 303 can **10c**
- Fancy Tuna Breast O' Chicken 7-oz. Can **42c**
- Pork & Beans Campbell's—In rich, creamy tomato sauce. 2 21-oz. Cans **37c**
- Catsup Kroger-made from red-ripe tomatoes. 2 4-oz. Bgts. **35c**
- Spaghetti Franco-American. 2 19-oz. Bgts. **39c**
- Miracle Whip Salad Dressing. 1 qt. **59c**

Kroger Apple Sauce Kroger Apple Sauce with that tart-sweet flavor that goes so well with juicy pork roasts. Stock-up now at this low, low price. **No. 303 Cans 2 29c**

- Burry Cookies Dickens Assorted Boxed Cookies. 12-oz. box **31c**
- Dog Meal Miller's Dry. For a well balanced diet. 5 lb. bag **69c**
- Margarine Kayko packed in 4 yellow quarters. **lb. 29c**
- Peanut Butter Peter Pan or Crunchy. 12-oz. jar **37c**
- Nylast Protects nylons. Makes them last longer. 4-oz. bag **39c**
- Bab-O The double action Cleanser. Reg. Size. 2 cans **25c**

WISHBONE DRESSING 8-oz. Bot. 39c	Regular Size Bars Dial Soap 2 for 27c	Large Both Size Bars Dial Soap 2 for 37c	Fine Detergent Armour Suds 19-Oz. Pkg. 30c	Large Package Chiffon Flakes 30c	1-Lb. Package Spic & Span 25c	LIPTON TEA 4-oz. Pkg. 59c 1/2-Lb. Pkg. 72c
Regular Size Bars Lava Soa 2 for 25c	Large Package Duz 30c	Large Package Dreft 30c	Large Package Cheer 30c	Disinfects—Deodorizes Clorox 1/2-Gal. 35c	Kroger Frozen Lemonade 6-Oz. Cans 97c	DASH DOG FOOD 2 1-Lb. Cans 33c

We reserve the right to limit quantities. Prices effective through Sat., July 10, 1954