

PRIMARY ELECTION

(Continued from preceding page)

teacher and former vocational advisor. "The sales tax diversion amendment of 1946 aided the schools," Swanson said, "but increased the problem of state finances. In township operation, some townships receive a disproportionate share." "The same holds true for school aid. There is need for the revision of school code, reorganization of school districts, and establishment of minimum salaries for teachers." Swanson believes there is need for a constitutional convention to be called for reappointment on basis of population.

Oakland County

The post of sheriff is the only county office that is providing competition among candidates on the Republican ticket in the August primary election. On the Democratic ticket, two men are seeking the post of prosecuting attorney. Otherwise, the candidates of each party is unopposed.

County Clerk

LYNN D. ALLEN, 55, Republican, (incumbent) of Pontiac has served as county clerk since 1935. NEIL R. CROWE, 33, Democrat, of Rochester is the only candidate of his party to run for this office.

Prosecuting Atty.

ROBERT L. O'CONNELL, 27, Democrat, of Birmingham is self-employed in private law practice. "The site of Oakland county requires we establish a morgue with a full time pathologist," O'Connell stated. "Homicide could go undetected under the present set-up."

MAURICE E. TRIPP, 47, Democrat, of Royal Oak, is O'Connell's opponent on his party's ticket. Tripp, in private law practice, also serves as attorney for Hazel Park. "The prosecuting attorney must have the necessary machinery to determine the facts of the cases that come before him," said Tripp. "He should have competent medical advice prior to the presentation of the case in order to determine the proper procedure for the prosecution of the offender in cases involving mental illnesses."

FREDERICK C. ZIEM, 38, Republican incumbent of Pontiac has no opposition.

County Treasurer

DONALD E. BARRETT, 43, Democrat, of Pontiac is his party's only candidate for this office. CHARLES A. SPARKS, 62, Republican (incumbent) of Pontiac, has served as county treasurer for 22 years.

Register of Deeds

HAZEL A. KUCHINSKY, 47, Democrat, Troy township, is the wife of Marvin Kuschinsky, who has sought political office on the Democratic ticket in years past. She is her party's only candidate for register of deeds.

ORRIN McQUAID, 49, Republican (incumbent) of Pontiac, has served as register of deeds in Oakland county since 1940.

Sheriff

ROBERT R. COPEMAN, 34, Republican, Clarkston, is a high school graduate and a veteran of World War II. Employed at the Dostal Foundry and Machine Company, he is a member of the UAW-410, International Molders and

Foundry Workers Union. "I am sure the budget can be cut," stated Copeman. "3229.836 is too high for the service we get." GORDON W. DENEAU, 53, Republican, Pontiac, is a high school graduate and at present on leave of absence from GMC. He served as sheriff's deputy two years, county jail turnkey one year, and is a past member of the Pontiac board of education, and board of director of the Pontiac National Bank. "If elected," Deneau stated, "I will inaugurate a police training school for all police personnel in Oakland county at no further expense to the taxpayers. I will insist that all members in the special deputy reserve attend this training school before obtaining their special deputy card and badge."

CLARE L. HUBBELL, 51, Republican (incumbent) of Pontiac, has served as Oakland county sheriff for eight years. "I am proud of the improvements I have made in the past years," said Hubbell, "such as the installation of the Oakland county telephone system, and the installation

of four outlying drivers license bureaus." FRANK IRONS, 55, Republican, Berkley, has had 28 years of police experience, serving as chief of police of Berkley. Irons advocates better patrol car service in the unincorporated areas; better assignment of patrol cars on main highways on Sundays, holidays and other times where there is heavy traffic; and a complete new plan to furnish drivers' licenses to those who do not reside in cities and villages. GEORGE D. HICKS, SR., 48, Democrat, of Pontiac, is the only Democratic nominee for the office. He has served on the Pontiac police force for 22 years and is at present a plant protection officer.

GLENN D. HARPER, 45, Democrat, Hazel Park, is the only Democratic candidate running for the office.

Local Propositions

County Bldg. Bond Issue

Proposal No. 1

"Shall the County of Oakland, State of Michigan, borrow the sum of Four Million Five Hundred Thousand Dollars (\$4,500,000) and issue and sell its full faith and credit bonds therefor, for the purpose of paying the cost of erecting a county building in the City of Pontiac, Michigan, to house the courts and the general county offices, said bonds to bear interest

at a rate not to exceed 3 1/2% per annum payable semi-annually and to mature serially as shall be determined by the County Board of Supervisors, the first maturity to be not more than 2 years and the last not more than 20 years from the date of issuance?" **Proposal No. 2** "Shall the limitation on the total amount of taxes which may be assessed each year against property in the County of Oakland, State of Michigan, for all purposes except taxes for the payment of interest and principal on obligations incurred prior to December 8, 1932, be increased as provided in Section 21 of Article X of the Constitution of Michigan, for a period of 20 years from 1954 to 1975, both inclusive, by 1/20th of 1% (50¢ per \$1,000) of the assessed valuation as equalized, for the purpose of paying principal and interest on, and establishing a reserve for, bonds aggregating not to exceed \$4,500,000 in principal amount, to be issued to pay the cost of erecting a county building in the City of Pontiac, Michigan, to house the courts and the general county offices?" **Proposal No. 3** "Shall the limitation on the total amount of taxes which may be assessed each year against property in the County of Oakland, State of Michigan, for all purposes except taxes for the payment of interest and principal on obligations incurred prior to December 8, 1932, be increased as provided in Section 21 of Article X of the Constitution of Michigan, for a period of 20 years from 1954 to 1975, both inclusive, by 1/20th of 1% (50¢ per \$1,000) of the assessed valuation as equalized, for the purpose of paying principal and interest on, and establishing a reserve for, bonds aggregating not to exceed \$4,500,000 in principal amount, to be issued to pay the cost of erecting a county building in the City of Pontiac, Michigan, to house the courts and the general county offices?" **Proposal No. 4** "Shall the limitation on the total amount of taxes which may be assessed each year against property in the County of Oakland, State of Michigan, for all purposes except taxes for the payment of interest and principal on obligations incurred prior to December 8, 1932, be increased as provided in Section 21 of Article X of the Constitution of Michigan, for a period of 20 years from 1954 to 1975, both inclusive, by 1/20th of 1% (50¢ per \$1,000) of the assessed valuation as equalized, for the purpose of paying principal and interest on, and establishing a reserve for, bonds aggregating not to exceed \$4,500,000 in principal amount, to be issued to pay the cost of erecting a county building in the City of Pontiac, Michigan, to house the courts and the general county offices?" **Proposal No. 5** "Shall the limitation on the total amount of taxes which may be assessed each year against property in the County of Oakland, State of Michigan, for all purposes except taxes for the payment of interest and principal on obligations incurred prior to December 8, 1932, be increased as provided in Section 21 of Article X of the Constitution of Michigan, for a period of 20 years from 1954 to 1975, both inclusive, by 1/20th of 1% (50¢ per \$1,000) of the assessed valuation as equalized, for the purpose of paying principal and interest on, and establishing a reserve for, bonds aggregating not to exceed \$4,500,000 in principal amount, to be issued to pay the cost of erecting a county building in the City of Pontiac, Michigan, to house the courts and the general county offices?" **Proposal No. 6** "Shall the limitation on the total amount of taxes which may be assessed each year against property in the County of Oakland, State of Michigan, for all purposes except taxes for the payment of interest and principal on obligations incurred prior to December 8, 1932, be increased as provided in Section 21 of Article X of the Constitution of Michigan, for a period of 20 years from 1954 to 1975, both inclusive, by 1/20th of 1% (50¢ per \$1,000) of the assessed valuation as equalized, for the purpose of paying principal and interest on, and establishing a reserve for, bonds aggregating not to exceed \$4,500,000 in principal amount, to be issued to pay the cost of erecting a county building in the City of Pontiac, Michigan, to house the courts and the general county offices?" **Proposal No. 7** "Shall the limitation on the total amount of taxes which may be assessed each year against property in the County of Oakland, State of Michigan, for all purposes except taxes for the payment of interest and principal on obligations incurred prior to December 8, 1932, be increased as provided in Section 21 of Article X of the Constitution of Michigan, for a period of 20 years from 1954 to 1975, both inclusive, by 1/20th of 1% (50¢ per \$1,000) of the assessed valuation as equalized, for the purpose of paying principal and interest on, and establishing a reserve for, bonds aggregating not to exceed \$4,500,000 in principal amount, to be issued to pay the cost of erecting a county building in the City of Pontiac, Michigan, to house the courts and the general county offices?" **Proposal No. 8** "Shall the limitation on the total amount of taxes which may be assessed each year against property in the County of Oakland, State of Michigan, for all purposes except taxes for the payment of interest and principal on obligations incurred prior to December 8, 1932, be increased as provided in Section 21 of Article X of the Constitution of Michigan, for a period of 20 years from 1954 to 1975, both inclusive, by 1/20th of 1% (50¢ per \$1,000) of the assessed valuation as equalized, for the purpose of paying principal and interest on, and establishing a reserve for, bonds aggregating not to exceed \$4,500,000 in principal amount, to be issued to pay the cost of erecting a county building in the City of Pontiac, Michigan, to house the courts and the general county offices?" **Proposal No. 9** "Shall the limitation on the total amount of taxes which may be assessed each year against property in the County of Oakland, State of Michigan, for all purposes except taxes for the payment of interest and principal on obligations incurred prior to December 8, 1932, be increased as provided in Section 21 of Article X of the Constitution of Michigan, for a period of 20 years from 1954 to 1975, both inclusive, by 1/20th of 1% (50¢ per \$1,000) of the assessed valuation as equalized, for the purpose of paying principal and interest on, and establishing a reserve for, bonds aggregating not to exceed \$4,500,000 in principal amount, to be issued to pay the cost of erecting a county building in the City of Pontiac, Michigan, to house the courts and the general county offices?" **Proposal No. 10** "Shall the limitation on the total amount of taxes which may be assessed each year against property in the County of Oakland, State of Michigan, for all purposes except taxes for the payment of interest and principal on obligations incurred prior to December 8, 1932, be increased as provided in Section 21 of Article X of the Constitution of Michigan, for a period of 20 years from 1954 to 1975, both inclusive, by 1/20th of 1% (50¢ per \$1,000) of the assessed valuation as equalized, for the purpose of paying principal and interest on, and establishing a reserve for, bonds aggregating not to exceed \$4,500,000 in principal amount, to be issued to pay the cost of erecting a county building in the City of Pontiac, Michigan, to house the courts and the general county offices?"

PORCHES BUILT

Jalousies - Screens
Combination Windows



or BUILD IT YOURSELF

No Money Down—Free Estimates

We rescreen and repair porches. All types of Storm Sash. All types and sizes of screens made.

AWNINGS
Canvas - Aluminum - Fiber Glass

OAK SASH and SCREEN
2317 WEST 12-MILE ROAD, BERKLEY LI 2-2226
Open Daily Till 5:30—Friday Till 9 P.M.

STERNAL'S for RCA Television Radios and Record Players FREE CUSTOMER PARKING In Rear of Store Open Friday evening to 9:00

TRY THESE Wrigley Values for QUICK-FIX FOODS



Greenfield's
Famous Old Fashion

DINNER LOAF

Ready-to-Serve Hot or Cold
1 1/2 Lb. Average **69¢** lb.

FAIRMONT'S
Orange Grapefruit • Fruit • Cherry • Waldorf

SALADS
14-Oz. Reusable Plastic Bowl with Cover **39¢**

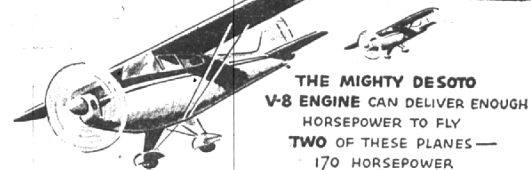
SWANKIE-FRANKIE
Combination Offer
HYGRADE'S SWEET-NIZED **BACON** PLUS HYGRADE'S SKINLESS **FRANKS**
1/2-lb. Bacon 1-lb. Franks Both For Only **79¢**

HYGRADE'S - Thoroughly Cooked
CANNED PICNICS 4 1/2-lb. Can **\$3.39**
PESCHKE or GLENDALE Any Size Piece **BOLOGNA** RINGS or LARGE **45¢**
MICKELBERRY - Fresh or Smoked Any Size Piece **LIVER SAUSAGE** **49¢**

Plumrose Brand CANNED HAMS
Ready to Serve • Imported • Boneless 2-lb. Can **\$2.39**

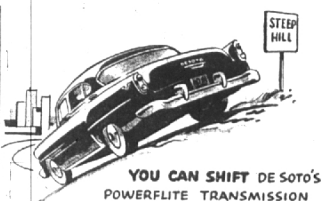
FAIRMONT'S Creamed COTTAGE CHEESE
1-Lb. Crn. **23¢**

More for Your Money - by DE SOTO

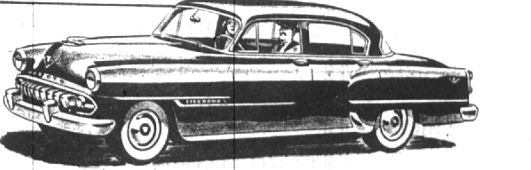


THE MIGHTY DESOTO
V-8 ENGINE CAN DELIVER ENOUGH HORSEPOWER TO FLY
TWO OF THESE PLANES - 170 HORSEPOWER

ONLY **3 TURNS** OF THE STEERING WHEEL WILL TAKE YOU FROM HARD LEFT TO HARD RIGHT WITH **DE SOTO** FULL TIME POWER STEERING



YOU CAN SHIFT DE SOTO'S POWERFLITE TRANSMISSION INTO "LOW" RANGE UP TO 65 M.P.H. FOR ENGINE BRAKING ON MOUNTAIN GRADES!



DE SOTO AUTOMATIC
THE CAR WITH ALL KINDS OF POWER

You see here just a few of the reasons why DeSoto is the car of the year. Come in and get the full details today!

SCHUTZ MOTORS, Inc.
912 S. Woodward DE SOTO-PLYMOUTH MI 4-7811

