

Real Estate Signs Face Crackdown

Proposed revisions in Birmingham's sign ordinance are about ready for recommendation to the city commission, it learned Monday night.

City Plan Technician Robert Boatman said, "I believe one more meeting by the plan board on this subject will see us ready to present a rough draft of the suggested changes."

The revised version of the ordinance came up when commissioners discussed a letter from a resident on Westwood who complained a sign advertising a subdivision development to longer was needed.

CITY OFFICIALS took a look at their land use map, and agreed there were only 12 buildable lots in the subdivision.

The present ordinance requires, according to City Attorney Furber Hascall, more than 25 lots in a subdivision before such "advertising signs" can be erected.

Commissioners said the present ordinance is to be enforced, even to the extent of keeping the "open" signs off the public right-of-way, another ordinance violation.

The Birmingham Real Estate board is to be informed, so it can warn its members of the city's crackdown.

Question Legality Of 1/4-Mill Levy On Winter Tax

If there is no legal obstacle, Birmingham this winter will get another \$11,000 which it will use to apply on pending drain-at-large assessments.

City Manager D. C. Egbert asked the commission to approve a resolution calling for a 1/4-mill levy on the 1954 winter tax bill, but several commissioners raised the legality question.

"Can the city levy an advance on such assessments?" they wanted to know from City Attorney Forbes Hascall. He said he would need a week to find the answer.

THERE IS little doubt but what Birmingham will need to raise about \$1 1/2 million to finance its share of the proposed \$30 million 12 Towns relief program in the eastern Oakland county, now in the engineering stages.

So the \$11,000 this year would make hardly a dent in the city's obligation.

In the past several years, this special 1/4-mill levy has raised \$55,000 to pay assessments involved in the Red Run and Clinch drains, said Egbert.

you get more... Save more with these

Food Buys

POUND PACKAGE

SLICED BACON 59¢

FRESH

Stewing CHICKENS 45¢ lb.

FRESH FROM THE COAST

SHRIMP 59¢ lb.

HORMEL or CUDAHY BRANDS

SMOKED HAM

MICHIGAN GROWN

BELTSVILLE 4 to 7 lb.

TURKEYS 59¢ lb.

LEAN AND TASTY TENDER
PRIME & CHOICE GRADES

ROLLED RUMP ROAST of BEEF 89¢ lb.

CHOICE or PRIME BEEF
ROUND or SWISS

Steaks 79¢ lb.

LEAN and TASTY

Ground Beef 35¢ lb.

3 lbs. \$1.00

Foreign Students To Stop in City

(FROM LEFT) MRS. FRANKLIN LAUCOMER, MRS. Albert Riethling, Mrs. Charles Dybvig and Mrs. Walter Lewis plan a warm welcome for foreign students. (Eccentric Photo)

The visit to Birmingham of 33 European teenage guests will add an international flavor to several local households for three days, beginning next Monday, July 26.

The youngsters, who will be guests of Birmingham families, are a contingent of foreign students sponsored by American Field Service, international scholarship activity. They are making Birmingham a stopover in a 4500-mile tour of 11 American cities before embarking for their homelands early next month.

Except for Washington, D.C., Birmingham is the only city in that tour which will spend more than one day.

An informal reception on their arrival here has been planned at the home of Mr. and Mrs. Walter Lewis, 1060 Lake Park. There they will meet the people they are to stay with here and also meet many Birmingham teenagers.

FOR THE PAST year the boys and girls have attended American high schools, principally in New York state, living with families there to give them a close contact with the American way of life.

After their return home some of these students will be hosts to American students under an AFS summer program.

The group visiting Birmingham is one of eight making similar trips of the United States under arrangements by American Field Service, originally a corps of voluntary ambulance drivers who served in both World Wars.

The student exchange program was organized in 1947. To date 1133 students from abroad have participated, 265 of them this year.

Three years ago the State Department joined the program by offering to defray part of the expense of transporting and maintaining German and Austrian students. This year 119 of the total are from these countries. The remainder are financed by contributions to AFS from American business and community organizations.

EUROPEAN countries represented by the teen-agers stopping here include Austria, Belgium, Denmark, Finland, France, Germany, Greece, Italy, Netherlands, Norway, Sweden and Switzerland.

According to Mrs. Walter Lewis, 1060 Lake Park, who heads the families acting as hosts, Birmingham was chosen as a key stopover because of its proximity to

Larger Groups Now Permissible At Springdale

Although Springdale Park presently isn't set up to serve groups larger than 50 persons, local organizations up to 100 can stage picnics there for the remainder of the summer, Birmingham city commissioners decided this week.

A municipal park limited exclusively to Birmingham residents, it now does not have proper facilities to serve the larger gatherings, pointed out City Manager Dave Egbert.

The commission agreed with commissioner Dean Beier, who brought up the question, that the maximum size of groups permitted should be doubled for the rest of the summer, and that an attempt would be made to have more adequate facilities, including tables and stools, ready for next summer.

Assault, Battery Case Dismissed

Because he had made restitution, the assault and battery case against Walter B. Archer, 1985 West Lincoln, was dismissed Wednesday by Birmingham Justice John J. Gaffin.

Police said Archer severely beat another 18-year old youth without provocation on May 14. The youth suffered a badly bruised eye, two broken teeth, and was groggy for several hours after the attack.

Archer now is in the armed forces, stationed at Camp Chaffee, Ark.



Mid. John W. Roberts, son of Mr. and Mrs. John C. Roberts, 180 Yarmouth, Bloomfield township, takes a turn on the controller of the training phase aboard the battleship USS Missouri at sea. Roberts is in his fourth year at the U.S. Naval Academy. He was graduated from Cranbrook high school. Shipboard training for the future officer includes practical experience in seamanship, navigation, gunnery, engineering and communications. The ship is expected to return to Norfolk, Va., Aug. 3.

CHEESE DEPARTMENT
Special of the Week

In The Piece	
DOMESTIC SWISS CHEESE	lb. 69c
Aged Black Rind	
NEW YORK CHEESE	lb. 79c
Fairmont	
COTTAGE CHEESE	lb. carton 21c
BALLARD BISCUITS	2 Cartons 25c

MILLER'S LITTLE RED HEN
CHICKEN PIES
MADE FROM YOUNG FARM FRESH CHICKENS

BEST BY ANY TEST

DELICIOUSLY DIFFERENT

A Real \$1.00 Meal ... 2 For 89c

BUMBLE BEE FANCY RED SOCKEYE

SALMON lb. Can 63¢

BUMBLE BEE—CHUNK STYLE WHITE MEAT 3 Cans

TUNA ... \$1.00

MIRACLE WHIP

Salad Dressing qt. Jar 49¢

GERBER'S

BABY FOODS

Strained Junior

4 Jars 39c | 3 Jars 43c

MAXWELL HOUSE

COFFEE lb. \$1.09

BIRDS EYE
FROSTED FOODS

frozen foods

JOIN the BIRDS EYE LABEL CLUB

Chicken or Beef FROZEN PIES, 8-oz. ... 2 for 75c

PEAS and CARROTS, 10-oz. ... 2 for 37c

Nilear LEMON JUICE, 6-oz. ... 2 for 37c

Aunt Bess BEEF TURNOVERS, 10-oz. ... each 35c

Snow Crop
FROZEN FOODS

Snow Crop Frozen Foods

ORANGE JUICE, 6-oz. ... 3 for 39c

FRENCH FRIES ... 2 for 37c

PEAS ... 2 for 37c

Chopped or Leaf SPINACH ... 2 for 37c

Heinz—1-gal. Bottles

KETCHUP ... 2 for 49c

Chey Chase—16-oz. Can

APRICOT NECTAR ... 39c

RIPE OLIVES, 3 cans \$1.00

Glorietta

TOMATO ASPIC, 4 cans \$1

AWREY BAKERY

Tasty Cherry Filled Cookies ... 6 for 40c

Fresh Fruit Red Raspberry Tarts ... 3 for 52c

Fresh Fruit Red Raspberry Pies ... 90c each

Tasty Almond Nut Pastry Rolls ... 6 for 59c

Chocolate Fudge Angel Food Cakes ... 72c each

Chocolate Crunch Fudge Cup Cakes ... 6 for 47c

Danish Strawberry Almond

Strussel Coffee Cakes ... 75c each

Extra Tender Twisted Glazed Donuts ... 6 for 39c

SPECIALTY BREAD—A DIFFERENT VARIETY EVERY DAY

Pineapple Glazed Dunkers ... 65c per dozen

FRIDAY AND SATURDAY ONLY

Delicious Chocolate Frosted Marble Layer Cakes, 75c ea.

FRIDAY AND SATURDAY ONLY

Golden Snow Cream Frosted 3 Layer Cakes 80c per half ... \$1.60 each

Extra Special
Frozen Sealed Sweet Juices

ORANGE JUICE, 6-oz. ... 6 for 97c
Case \$7.59

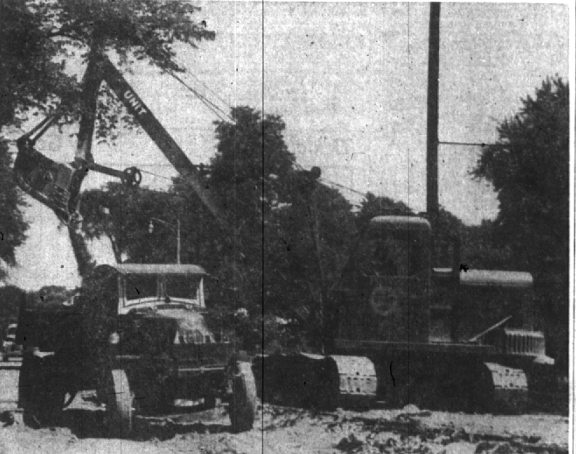
LEMONADE, 6-oz. ... 6 for 97c
Case \$3.79

LIMEADE, 6-oz. ... 6 for 97c
Case \$3.79

SWANSON'S FROZEN PIES

- BEEF 3 For
- TURKEY \$100
- CHICKEN 1

Sires



DESTRUCTION PRECEDES CONSTRUCTION for contractors working on the widening and paving of W. Maple between Linden and a point south of Glenhurst. The old pavement must be removed before forms can be set for the wider street which will join the widened pavement from Southfield to Linden, completed in 1952. Meanwhile, motorists will have to put up with the Southfield to Lincoln to Cranbrook detour for about six weeks. (Eccentric Photo)