

PLAY IT SAFE Grass Fires Need Extra Precautions

If you have a vacant lot next door or at the rear of your property, that has grown up with high weeds, every precaution should be taken when burning papers, rubbish, etc., adjacent to it.

With any prolonged dry spell, the dangers from grass fires are greatly increased. Grass and high weeds should be cut and raked up as much as possible to get them away from garages, out-buildings and shrubbery.

With a slight breeze fanning it, a grass fire can travel far and do much damage in less time than it takes to call the fire department.

IF YOU HAVE grass or rubbish to burn you should first come to the fire department and apply for a permit to burn. The men on duty will tell you if you are in an area where burning is permissible and if the wind conditions are right for it. If so, a permit will be issued to you. Don't burn up your or your neighbor's garage or shrubbery. Play It Safe. Check with the fire department for a permit and approval, then survey the area to determine that should the fire get away from you, it would not cause any damage.

A garden hose and broom would be of great assistance in controlling a grass fire until the fire department arrives in case you need them. Have the hose handy and in place with the water shut off at the nozzle prior to starting a grass fire. Then, if necessary, you can bring it quickly in play. Remember, "an ounce of prevention is worth a pound of cure."

Prepared as a public service by members of the BIRMINGHAM FIRE DEPT.

Serving as Judges In Pet Show Series

Six Birmingham-Bloomfield Hills residents are among the judges handling the awarding of trophies and ribbons at the 32 pet shows being sponsored by the Oakland County Animal Welfare society.

Serving from here are Mr. and Mrs. Charles Mortenson, Delbert Adams, Mrs. Karl Kocher, Dr. and Mrs. William G. Ferguson.

The series opened July 8 at Royal Oak where a total of 12 shows will be held. The remaining 20 are scheduled for Pontiac, with some days calling for as many as three shows. All are being held in connection with the community's recreational program.

Mrs. Clyde Kuhl of Royal Oak, chairman of the judges, said that to date it had not been possible to schedule any show for the Birmingham area.

Has Basic Training

Opdyke Theodore Allen, 4090 Walnut Hill drive, enlisted in the regular army in June and is receiving his initial training at Camp Chaffee, Ark. After his training he will take his first leave home and then report to Ft. Monmouth, N. J. where he will attend the Nuclear Technician Course.

Botanist Suggests Steps To Assure Proper Lawn Care

Summertime, when the living is supposed to be easy, home owners must often work frantically to keep their greenery green.

This summer, after a particularly dry winter, proper treatment of lawns is more important than usual, according to Dr. Marion T. Hall, botanist at Cranbrook Institute of Science.

Healthy grass depends directly on the amount of water available to its roots, he says. Long-rooted grass has a much better chance of surviving the dog days of July, August and September, the months when lawns suffer the most.

It is still not too late to encourage deeper root growth, although advance preparation for dry periods is better. Proper harrowing, mowing and watering are the keys to sturdy chlorophyll.

Harrowing loosens earth around the roots and jets in air. For beginning or reconditioning lawns Dr. Hall recommends disc harrows with the discs set straight. Well developed turf is best served by punch harrows, consisting of spikes of various lengths which air-condition the roots without slicing the surface growth.

PROPER MOWING is essential, he warns. Two most common faults in mowing grass are cutting too close to the ground and taking off too much at one mowing. Grass should be kept from 1 1/2 inches to 2 inches tall. Never more than one inch of tops should be cut at one mowing.

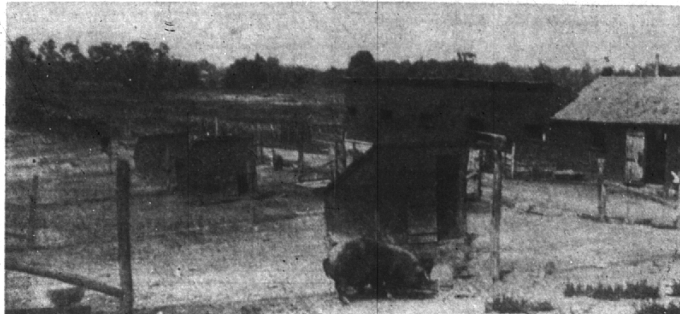
Watering is probably the most important treatment. A lawn should not be watered lightly or too often. The rule is thorough, but infrequent, drenching.

Full applications of fertilizer will make next summer's job a lot easier. Dr. Hall suggests, as a good average dressing, ten parts nitrogen, six parts phosphorus and four parts potassium, applied at the rate of 600 pounds to the acre.

In spite of all the complexities of modern living, the opportunity for individuals to achieve success is perhaps greater than at any time in the past. Youth that is intelligent, alert and willing to work hard can still get to the top.

BIRMINGHAM BACKGROUND

• Local History in Story and Picture •
As Compiled and Written by RUTH ANNE SILBAR



Pictured here is a part of the Hupp farm in 1908, showing the Berkshire pig department which was under the management of James W. Clapp, who now lives in Pontiac.

Hupp farm eventually became today's fine residential area, Bloomfield village, and the only reminder of its past is the Hupp Cross road.

PRIZE PIGS WERE RAISED on the Hupp farm. Most

notable was Lady Nina 5th, considered one of the leading Berkshire show sows of the U. S. She was shown at large fairs throughout the country and won many championships.

"She had farrowed a litter of 17 in the spring of 1909," wrote Clapp, "and another litter of 16 in the fall, so we thought she had earned a rest. Had she been able to go to Chicago (International Live Stock Exposition) she would have been a winner there."

Kenneth Hardy Elected Officer



KENNETH HARDY

Kenneth F. Hardy, 412 S. Glenhurst, has been elected treasurer of the Detroit Chapter of the National Association of Cost Accountants for the 1954-55 term.

Hardy has been with the General Motors Corporation since 1935, having held numerous responsible positions, and at the present time, as the Director of the Procedures and Methods Section of the Controller's staff. He was formerly employed by the Hyatt Bearings Division, Harrison, New Jersey.

He has been an active member in the National Association of Cost Accountants, having served as a Director in the Detroit Chapter prior to his election as treasurer.

He also served as a director of the Newark Chapter of the National Association of Cost Accountants.

Company, returned home July 9 after completing a two-week insurance course at the home office in Newark, New Jersey. Plumstead was one of 21 men selected from among the company's nationwide field force to attend the course.

Insurance Course

Peter H. Plumstead, 596 South Glenhurst, a member of the C. Carroll Otto agency in Detroit of The Mutual Benefit Life Insurance

company, returned home July 9 after completing a two-week insurance course at the home office in Newark, New Jersey. Plumstead was one of 21 men selected from among the company's nationwide field force to attend the course.

In Summer Session At Wyoming Camp

Norman W. Gable, 1933 Kenesaw; and William J. Wilson, 27879 Lathrup, Lathrup Village, student at the University of Michigan, are among 100 university students and recent high school graduates attending a summer session at Camp Davis, Jackson, Wyo.

Required of U-M civil engineering students, the camp offers an eight week course in geology and surveying for university students and a course in fundamental surveying for the younger men.

Driver Acquitted Of Drunk Charge

A jury of five men and one woman deliberated a half hour in Birmingham justice court Wednesday, July 7, before finding John D. Stanton, 6290 W. Surrey, not

guilty of driving under the influence of liquor.

Stanton was arrested March 8 when a motorist following his car called police by radio-telephone.

Getting ready to sell your car? Advertise it in the Classified Ads.

TYPEWRITERS
ADDING MACHINES
REPAIRED
New and Rebuilt Typewriters
For Sale—Remain
Birmingham Printing
369 EAST MAPLE • MI 4-4740

PROMOTE

Rep. William S.
BROOMFIELD
for
STATE SENATOR

- 6 years in House of Rep.
- Speaker Pro-tem
- Resident of Royal Oak for 32 years
- Republican

Vote Aug. 3

DAVID J. UNDERDOWN'S

**DOUGLAS
CLEANING CO.**

534 S. Woodward MI 4-1507

HAND FINISHED

- DRAPES
- BLANKETS
- SLIP COVERS

**CERTIFIED
COLD
STORAGE**

**PRESCRIPTION
SUN
GLASSES**

YOUR PRESCRIPTION GROUND IN SUN
GLASSES — SINGLE VISION OR BIFOCALS
No Need For Eye Examination. We Take the Correction
Off Your Present Glasses With Our Lensometer.

FORMERLY
ASSOCIATED WITH
SQUARE DEAL
MILLER, DETROIT
IN OPTICAL DEPT.
AS MANAGER AND
OPTOMETRIST

**Norman R.
Becker, O.D.**
And Staff

COMPLETE
LENS GRIND-
ING SHOP
ON OUR
PREMISES

129 E. MAPLE MI 4-0644

Your Headquarters For
**OUTSIDE
PAINTS**

because we've the brands of paints everyone wants.

Ask About Our
WHITER than WHITE

**BIRMINGHAM
PAINT**

Glass & Wallpaper Co.

335 E. Maple MI 4-3737

Store Hours Monday thru Friday 8:30 to 5:30;
Saturday 8:30 to 5:00

'29 PHS Graduates Seek 'Lost' Members

Chairman George Stout, 4487 Forest, Pontiac, is wondering if there are any "misplaced" members of Pontiac high school's Class of '29 living in the Birmingham area.

The group is planning a 25th class reunion on Aug. 28, and find there are several members of the January, June and summer school classes they are unable to locate. Stout asks that any living in the area contact him, or any other member of the class who will notify proper committee members.

Want ads cannot be accepted after 5 p.m. each Tuesday.

Come on in
it's cool inside
Village Store

**Glassford's
headquarters
for maternity garments**

Designed to make your waiting easy and to keep you
at your prettiest.

Glossard's

GIRDLES...

No bones about it! But designed to give the maximum in support, very light weight, satin elastic.

Created especially for you, who require moderate help... a slightly boned girdle, pleasantly sturdy.

Give your back the ultimate in support, in this heavily boned constructed for comfort, garment.

\$5.95
\$5.95
\$8.50

BRAS...

There is wizardry in the design of these nursing bras. They have everything you require. In cotton or satin and elastic.

\$2.50 to \$3.95

The Glassford Shop
Personalized Service By Graduate Costifiers

Store Hours:
Daily 9:00 to 5:30

133 Pierce MI 4-5244

Free Parking Beside Store

here and now, our **SALE OF SALES**

**JULY
SALE**

spring and summer suits **12⁹⁰ and 19⁹⁰**
Were 25.00 and 29.95

All-season styles in crease-resistant rayon weaves; pastels, prints, dark colors. Some wools, flannels, from earlier spring stocks. Perfect choice for vacation travel wear.

better suits, were 35.00 to 139.75... averaging
1/2 off

Hand tailored styles in nubbed silks, imported tweeds, fine woolsens. One-of-a-kind suits for wear now... and next season.

Davidson's
WOODWARD AVENUE
BIRMINGHAM

All Sales Final
Sorry, No Mail or Phone Orders
No C.O.D.'s

