

# Help Yourself To Extra Savings During Our Famous Annual



Now In Progress

SPECTACULAR SAVINGS IN EVERY  
DEPARTMENT . . . DRASTIC REDUCTIONS  
FOR QUICK-AS-POSSIBLE CLEARANCE!

Everything from Our Regular Stock

INTIMATE APPAREL - Slips, Gowns,  
Bed Jackets, Pajamas, Panties,  
Petticoats, Robes, Negligees.

SPORTSWEAR - Blouses, Wool Skirts,  
Knit Dresses, Jumpers, Raincoats,  
Slacks, Jackets, Sweaters.

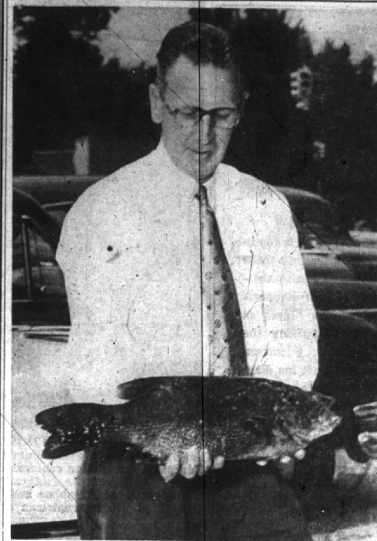
CHILDREN'S WEAR - Coats, Coat Sets,  
Snowsuits, Dresses, Skirts, Blouses,  
Sweaters, Outer Jackets, Hats,  
Toddler Clothing.

FASHION APPAREL - Dresses,  
Formals, Suits, Millinery, Shoes,  
Fur Trimmed Coats, Untrimmed Coats.

## Jacobson's

BIRMINGHAM

Use Your Charge-Plate®



**THE PROUD** fisherman is Howard Coe of 1632 Webster. He landed the big one, a 6 1/4 pound small mouth bass while fishing at Wegwas lake in the Upper Peninsula a week ago. Coe used light tackle and had no net to assist in landing his catch, thought to be among the largest ever taken from this particular body of water.

### 1953 HIGHLIGHTS

(Continued from preceding page)

district the city's voting precincts. Three new precincts were added in the reallocation of voting districts.

An informal ceremony to be attended by local civic and business leaders at Michigan Bell Telephone offices will mark the inauguration Nov. 20 of coast-to-coast dialing of long distance calls from Birmingham. The innovation makes it possible for Birmingham phone users to dial direct to residents in many cities across the country.

Issue of Nov. 23  
The city commission voted Monday night, Nov. 23, to approve a fire advisory committee request for the hiring of an engineer to prepare preliminary designs and cost estimates for additional fire fighting facilities. The commission indicated that citizens may be asked to approve a \$280,000 to \$225,000 bond issue in the spring to finance construction of two fire stations in the city.

The Bloomfield Hills school district will have a new high school and additional elementary facilities following the passage Nov. 23 of a \$1,750,000 bond issue. In a record turnout of voters the proposal was accepted by a vote of 854 to 353.

Traditional union services for several Birmingham churches will mark the observance of Thanksgiving in this community Nov. 26. Sponsored by the Birmingham Council of Churches the union service will be held in the First Presbyterian church at 9 a.m.

An old rivalry will be renewed at 11 o'clock Thanksgiving morning on Cass field in Royal Oak when the Birmingham Maples football team meet the Royal Oak Oaks in the annual battle for "the little brown jug".

Troy township board members held up effort of land developers to have the Forritt property annexed to the city of Birmingham at a meeting Nov. 23. A vote to call a public hearing on the annexation was deadlocked when three

members of the board voted for it and three voted against it.

Issue of Dec. 3  
Birmingham high school's Maples were awarded 25.0 in their annual Turkey Day tilt with the Royal Oak Acorns. The Thanksgiving classic dates back 55 years. Voters of Lathrup Village will get to the polls Monday, Dec. 7, to vote on the question of accepting a charter that will make their area the first city in Southfield township. Also on the ballot are the names of candidates, who, if the charter is approved, will become the officers of the new city.

Three armed men entered the office of the Fox and Hounds inn in Bloomfield Hills, Nov. 30, bound three employees and walked out with \$5,500. A fourth man driving a get-away-car appeared, picked up his confederates and sped north on Woodward.

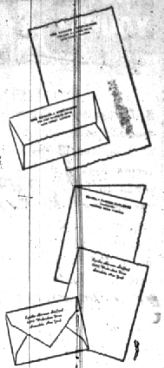
In the second annual Men's Night for Christmas shopping, which was held Nov. 30, three times as many stores participated than did a year ago when the idea was first tried out. The night was designed to give "the head of the family" a chance to do his Christmas shopping early before his better half

could deplete the stocks on sales counters.

The Birmingham Plan board met with the city Commission Dec. 3 in an effort to map out a definite policy under which it would seek to provide a plan for the city's future.

Issue of Dec. 10 - Southfield township's 36 square miles of territory lost its first par-

(Continued on Next Page)



January Sale

**RYTEX DECKLE  
EDGE VELLUM**

PRINTED STATIONERY

Fine quality Deckled Vellum in White, Blue, or Grey. Name and Address printed on sheets and envelopes in Script or Block style lettering in Blue or Mulberry ink.

Double the Usual Quantity

200 SINGLE SHEETS  
100 ENVELOPES

or

100 DOUBLE SHEETS  
100 ENVELOPES

or

100 LARGE FLAT SHEETS  
100 ENVELOPES

4.00 VALUE

FOR 2.65

BUY NOW FOR ALL THE FAMILY AND FOR GIFTS

*La Belles*  
137 West Maple

MAINTAINING  
ITS TRADITIONAL  
HIGH STANDARDS  
FOR 50 YEARS



With each passing year Society Brand adds to its reputation for unsurpassed craftsmanship . . . for style authority that has established and maintained standards respected everywhere.

\$85.00 up

**MATTHEW'S**

Custom Tailors & Men's Furnishings

Alterations done on all ladies' and men's clothing

288 E. MAPLE MI 4-1777

BRIGGS BLDG. Open daily from 8 to 6

Free Parking Friday 8 a.m. to 9 p.m.

**FIGURE TAXES  
FASTER**



**RENT**

A New Remington Rand

*TOPflight*

ADDING MACHINE

Available at low rates by the week . . . month . . . quarter. Phone us now—we can place a TOPflight at your desk today!

**BIRMINGHAM  
PRINTING  
COMPANY**

369 East Maple  
Phone MI 4-4740