

**Crisco**  
Shortening  
1-Lb. Can **35c**

**Ivory Soap**  
Personal Size Bars  
4 Bars **21c**

**Ivory Soap**  
Large Size Bars  
2 Bars **27c**

**Ivory Soap**  
Medium Size Bars  
3 Bars **27c**

**Camay**  
Large Bath Size Bars  
2 Bars **25c**

**Camay**  
Regular Size Bars  
3 Bars **27c**

**Ivory Flakes**  
Large Package  
**28c**

**Ivory Snow**  
Large Package  
**28c**

**Oxydol**  
Large Package  
**29c**

**Bordens Starlac**  
Non-Fat-Milk

Starlac Makes  
5 Quarts of  
Non-Fat Milk.

1-Lb.  
**41c**

**Chiffon Soap**  
Regular Pack  
**25c**

**Oven Cleaner**  
Easy Off  
8-Oz. Jar **69c**

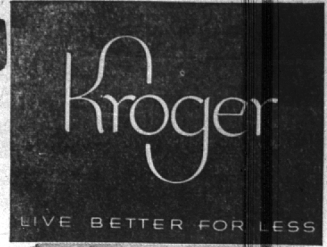
**Bab-O**  
Glosser  
2 Cans **25c**

**Fels Naptha**  
Bar Soap  
4 Bars **29c**

**Felso**  
Detergent  
18-Oz. Pkg. **27c**

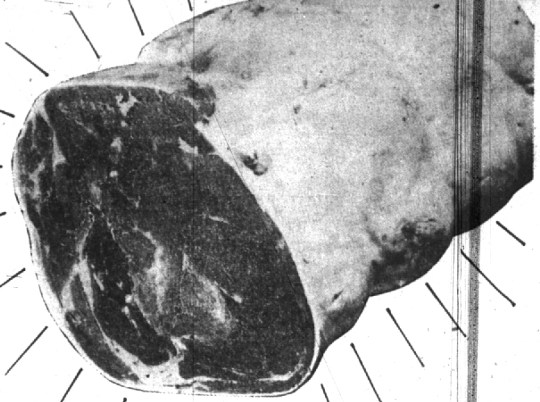
**BONELESS, ROLLED**

# VEAL ROAST



Milk-fed for finer, delicate flavor and tempting tenderness... you get better eating in any cut of Kroger's fine veal. Better value, too, for Kroger gives you veal at its best at the lowest possible price.

## 49¢



Shoulder Cut U.S. Gov't Graded "Choice"  
**Lamb Roast** . . . . lb. **49¢**  
U.S. Gov't Graded Choice  
**Leg of Lamb** . . . . lb. **69¢**  
Kroger-Fresh, lb. 43c  
**Ground Beef** . . . 3 lbs. **1.19**  
End Cut  
**Pork Chops** . . . . lb. **49¢**  
Completely Dressed  
**Stewing Chickens** . . lb. **49¢**

Michigan Grade I  
**Ring Bologna** . . . . lb. **39¢**  
Armour's  
**Beer Salami** . . . . lb. **53¢**  
4-Fisherman Frozen  
**Fish Sticks** . . . . pkg. **49¢**  
Cod, Haddock, Perch  
**Cooked Fish** . . . . pkg. **49¢**  
Fresh Dated Full Pint 89c  
**Oysters** . . . . . 1/2 pt. **49¢**

Wisconsin's Finest Mild Cheese  
**Long Horn Cheese** . . lb. **59¢**  
Fairmont  
**Cottage Cheese** . . . 2 lb. pkg. **45¢**

Country Club 80 Score  
**Roll Butter** . . . . . lb. **69¢**  
Kraft's  
**Cheez Whiz** . . . . . 1-lb. jar **59¢**

Kroger's Frozen  
**Orange Juice** . . . . . 6 6-oz. Cans **90¢**  
1c Sale Buy 5 Cans—Get 6th can for 1c  
The Perfect Spread for Kroger Bread  
**Eatmore Margarine** 2 lbs. **39¢**

**DEL MONTE PINEAPPLE JUICE**  
46-oz CAN **29¢**  
Sliced Pineapple Del Monte No. 2 can **29c**

**STOKELY CORN**  
2 No. 303 CANS **29¢**

**GREEN GIANT PEAS**  
2 No. 303 CANS **35¢**

New, Softer  
**Northern Tissue** . . . 3 rolls **25¢**  
Handy for your purse  
**Kleenex Tissues** 2 300 ct. boxes **49¢**  
For all the family  
**Kleenex Tissues** 2 200 ct. boxes **35¢**  
Instant Coffee  
**Maxwell House** . . . 6-oz. jar **\$1.64**  
Instant Coffee  
**Borden's** . . . . 10c off . . . 2-oz. jar **46¢**  
Instant Coffee  
**Nestles** . . . . 20c off . . . 4-oz. jar **90¢**

Kroger's Fine Cookies  
**Cocoanut Squares** . . . pkg. **25¢**  
New! Vanilla or Chocolate Iced  
**Pound Cake** . . . . . each **29¢**  
The Finest Sliced White Bread  
**Kroger Bread** . . . Large 20-oz. loaf **17¢**  
Embassy  
**Salad Dressing** . . . . pt. **19¢**  
Kroger  
**Salad Dressing** . . . . qt. **45¢**  
Van Camp  
**Pork & Beans** 2 No. 2 1/2 cans **49¢**

8 Mini  
**Sugar Ripe Prunes** 2-lb. pkg. **59¢**  
Buy 2 and get another for only 2c more  
**Friskie Dog Food** . . 3 1-Lb. Cans **35¢**  
Dogs love it  
**Doggie Dinner** . . . 3 cans **25¢**  
Sparkling White Clothes with  
**Rinso** . . . . . large package **28¢**  
99 and 44 100% Pure  
**Ivory Snow** . . . . . giant pkg. **67¢**  
For Cleaning  
**Pine Sol** . . . . . 16-oz. bot. **49¢**

**EMBASSY STRAWBERRY Preserves**  
The Perfect Spread for Toasted Bread 10-Oz. Jar **25¢**  
Royal  
**Pudding** Dark Sweet Choc., Vanilla, Butterscotch, Chocolate . . . 3 pkgs. **29¢**  
King Size  
**Pall Mall** . . . . . Cigarettes . . . . . ct. **\$2.01**  
Regular Size  
**Kotex or Modess** . . . . . box of 12 **39¢**

**KROGER TEA BAGS**  
1c SALE All For **50¢**  
Buy 48-Ct. at Regular Price and Get 16 Ct. Box for only 1 Cent

**25 LB. BAG MAINE POTATOES**  
25-lb. Bag **79¢**  
FREE of extra cost with each purchase of a 25 lb. bag of Maine Potatoes - a 3-lb. bag of onions  
Florida  
**Grapefruit or Oranges** . . 8 lb. bag **49¢**  
Florida  
**New Corn** . . tender, yellow . . 3 lge. ears **29¢**  
Florida Red  
**New Potatoes** . . . . . 3 lbs. **35¢**  
Giant 24 Size California  
**Head Lettuce** . . . . . 2 heads **35¢**  
Fresh Tender  
**Green Beans** . . . . . lb. **19¢**  
Texas  
**New Cabbage** . . . . . lb. **8¢**

<b>Soap Granules</b> Fels Naptha 22 1/2-Oz. Pkg. <b>29c</b>	<b>Pie Mixes</b> Native Brand Blackberry 22-Oz. Pkg. <b>40c</b>	<b>Evans Toppings</b> Butterscotch Take Home 8-Oz. Jar <b>19c</b>	<b>Marshmallow Fluff</b> Durkees 7 1/2-Oz. Jar <b>25c</b>	<b>Baby Foods</b> Gerbers Strained Jar <b>10c</b>	<b>Instant Desserts</b> My-T-Fine 3 Pkgs. <b>23c</b>	<b>Krispy Crackers</b> Sunshine 1-Lb. Pkg. <b>27c</b>
-------------------------------------------------------------------	-----------------------------------------------------------------------	----------------------------------------------------------------------------	-----------------------------------------------------------------	---------------------------------------------------------	------------------------------------------------------------	-------------------------------------------------------------

We reserve the right to limit quantities. Prices effective through Sat., Jan. 30, 1954