

Townsite Church Launches Drive On New Addition

Starting this month the congregation of Townsite Community church, Congregational, has entered an intensive seven-week program to raise funds to expand church facilities as quickly as possible.

Because of increased growth in the community which it serves, the church has been aware of over-taxed facilities and increasing difficulties in fulfilling its community obligations.

It is hoped that, at the end of the seven-week program, the way will be opened to start construction on an addition to the present building.

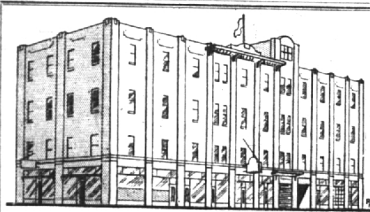
CURRENTLY half the children in the church school are attending Sunday classes at Lathrup school building. The addition, as planned, will accommodate the full church school as well as provide ample room for young peoples' and adults' activities.

The church expansion committee will sponsor a Loyalty dinner for all members and friends of the church on Feb. 3. Future plans will be presented at this meeting in the Birmingham Community House.

STERNAL'S
for
GOODYEAR
Tires and Tubes
FREE CUSTOMER
PARKING
In Rear of Store
Open Friday evening to 9:00

HEARING AIDS
and
BATTERIES
for
ALL MAKES
Make Inquiry at Our Store
and Get All of the Details
MI 4-2121
SHAIN'S
DRUG STORE
105 W. Maple

'Tis The Season!
For Large Tree Planting,
Removals and Power Sawing
(Diseases Diagnosed)
Phone LI 2-8132
Days or Evenings
Trim in the Dormant Season
JOHONNOT TREE SERVICE
Degree in Forestry, M.S.C.



You Are Cordially Invited to Inspect
OUR MODERN STORAGE
Built Especially to Store Household Goods
Local and Long Distance Moving
Gaukler Storage Co.
9 Orchard Lake Ave., Pontiac, Mich.
Dial "O" ask for Enterprise 6305

NOW
is the
HOUR

to stop putting up with a bed that no longer has its original sleep giving qualities. We'll pick it up in the morning, return it that evening restored like new to your specifications.

MATTRESSES & BOXSPRINGS
Completely Renovated In 1 Day
OXFORD
MATTRESS CO.
37 Years in Oakland County
Phone: Dial O ask for Enterprise 6310
FOR ESTIMATES
332 W. HURON
PONTIAC
FE 2-7685

SUNDAY SERMONETTE Urges Man to Turn To Universal Spirit

By FRANK GLABACH
Birmingham Unity Center

Of a character in a novel it was said, "His religion had never consisted in more than believing in God without having ever asked himself what he meant by God".

I would believe that many people are like that. We believe God exists. We say, "With God all things are possible". But we wonder sometimes how that helps us. Men knew about electricity before Benjamin Franklin flew his kite. But they knew comparatively little of its nature or its power or usefulness. Electricity did not benefit them much.

We all believe in God but some of us have very wrong notions of Him. Many respects to be such a one as ourselves in that we have given Him a many form. As Voltaire quipped, "God created man in His own image and man returned the compliment". We should understand that the true creation—reality—must flow from cause to effect: from Creator to creation and not the other way around.

Jesus knew God. He worked with God continually. He brought forth wonderful works saying, "God is Spirit, and they who worship Him must worship Him in Spirit". What must the Supreme All-originating Spirit be in Himself? That is the question for us.

LET US take one fact regarding it about which there cannot be any possible doubt. It is creative. If it were not creative nothing could come into existence. Therefore we know that its purpose, or law of tendency, must be to bring its life or nature into expression. And the life-giving Spirit seeking expression in individual lives can have no other intention towards them than "that they may have life, and that they might have it more abundantly".

So it behooves us to frequently turn to the free flowing action of the Universal Spirit—our God. We should seek to study the Mind back of nature—not the Cause back of the creature.

If we judge creation by appearances and experience we take a mean view of things. Everything in the universe tends toward the expression of a higher order of life. By studying the Mind back of nature we are seeking that which initiates and sustains that tendency.

WE FIND that the first Cause



FRANK GLABACH

back of all is God—Spirit—Mind. Living, omnipresent Spirit is the great constant of life. In its movement as it works from the invisible toward the visible, we detect pattern and purpose at work.

Infinite Spirit with Its divine content of original ideas concerning everything and everybody is the kingdom of heaven. Studying the Mind back of nature, in a word, is recognizing the presence of God as being in all and through all.

Because Jesus said, "No man hath seen God at any time", we might wonder whether we have the capacity to know Him.

But Jesus said that he knew Him. God is Spirit and it is thus in Spirit and by the Spirit that He is discerned. "There is a Spirit in man and the breath of the Almighty giveth him understanding."

By and through his spiritual mind nature man always has the means and the capacity to understand God. We are offices of Being. God brought man forth. That is why man has the urge to look for something higher than his human accomplishment.

IT IS a consequence of God-Spirit constantly seeking to work in and through him with greater effectiveness and demonstration. God has given us of His Spirit. And it is only as we seek Him in Spirit that we can understand what He is seeking to bring to pass within and through us.

Man didn't originate the idea of man. He feels the energy of that idea within him and sets out to discover what is taking place. Co-operating with God isn't so much a matter of making ourselves do something, as it is a matter of realizing the possibilities, the potentialities, the limitlessness and the qualities of infinite Spirit within us and responding to its urges and direction.

WHEN we quit measuring off Spirit by the yardstick of our human concepts, Spirit will do a fine piece of work in us and for us. We are made in God's image and likeness, which is to say that back of these human compositions where we have tried to live out the story of Life with little understanding there stands the real Life whose truth is more wonderful than fiction could be.

In an individual way our consciousness of the nature of the indwelling Spirit and its activity will give us peace of mind, health of body and discretion in the management of our affairs and power in carrying on the undertakings assigned to us. The knowledge of God—the true concept of Being—is ever with us, but it needs the faithful acceptance and co-operation of the mind of man in order that "as in heaven so on earth" peace, joy and happiness may reign.

Walter League Group Joins Silver Valley Caravan's '54 Outing

There's a long day coming for the Walter League, young peoples' organization of Lutheran churches in the Detroit area.

Joining others of the organization, the Birmingham group will take part in the annual Silver Valley caravan on Sunday, Feb. 7.

The group will leave Royal Oak at 4:30 a.m., returning in the evening.

The day's activities include a worship service and winter sports and will be highlighted by the selection of the Silver Valley Queen for 1954.

Redeemer Missionary

A film based on the Howard street Mission, "Out of the Night" will be shown at the Feb. 4 meeting of Redeemer Ladies' Missionary Society. Hostesses will be Mrs. Kenneth La Barge, Mrs. William Dajquist, Mrs. Walter Riedel, Mrs. J. Staphinkas and Mrs. John Hartman.

Unitarian Fellowship Units Plan Meetings

At the 1:30 p.m. meeting on Jan. 29 of the Women's Alliance of Birmingham's Unitarian Fellowship, Mrs. Eugene Heaz will be hostess in her Maryland avenue home.

The Jan. 28 meeting of the Unitarian Parents group will be held at 8 p.m. Mrs. Mrs. Newell McCuen, 635 Paritan, will be hosts.

Serving at the family dinner last Friday evening were Mesdames James Longwell, A. G. Hulbert, T. B. Lawton, all of Birmingham. Others were members from Royal Oak and Drayton Plains. The affair, attended by about 70 persons, was held in the Birmingham YMCA building.

Church Guild Lecture

An illustrated lecture on the North Isles will be given by Robert Fisher at the Feb. 4 meeting of the First Presbyterian church's Westminster guild. The program will be in the home of Mrs. C. W. Hennen, 1381 Birmingham boulevard, at 8 p.m.

Congregational Women List February Meetings

Early February meetings are planned by divisions of the Congregational Church of Birmingham.

On Feb. 1 the executive board of the Women's Fellowship is meeting at 1 p.m. with Mrs. William T. Arund, 2727 Square Lake road.

An 8 p.m. meeting is scheduled by the entire Fellowship the following evening, with Mrs. William E. Rigby, 18856 Bedford, as hostess. She will be assisted by Mrs. Clifford B. Weston, Mrs. Thomas J. Brennan, Mrs. Jack A. Clark and Mrs. Curtis Snider.

Mrs. Norman Strong, chairman of the missionary committee, said the program would be in the form of a dramatic skit, "Summons to Serving and Solidarity".

State Mission Chairman To Address Baptist W.M.U.

The chairman of the board of Women's Baptist Missionary Society of Detroit, Mrs. Ralph Pearson of Michigan, Mrs. Ralph Pearson of Detroit, will be the principle speaker when the Women's Mission Union meets Feb. 4. She will discuss the various works of the group in Christian and social service.

How Christian Science Heals "YOU CAN MAKE THE BIBLE PRACTICAL"

CKLW (800 kc.) Sundays 9:45 a.m.

CHRISTIAN SCIENCE CHURCH SERVICES

Sunday Morning 9:45-11:30
Wednesday Evening 8:15

Sunday School 9:45-11:30
Infants Room in Reading Room 9:30-11:15

READING ROOM

355 East Maple Avenue
Daily 10:00 A.M. to 8:00 P.M.
Except Holidays
Evenings 7:00 P.M. to 9:00 P.M.
Except Wednesday and Saturday

First Church of Christ Scientist
191 North Chester Street
All Are Welcome to Attend

Youth Week Services Will Introduce New Congregational Club

In observance of Youth Week, the Congregational Church of Birmingham will have a special service at 1 p.m. in the First Presbyterian church.

The Rev. Robert Dewey will speak on "So Send I You" with members of the newly formed Youth Fellowship assisting in the service.

Praying pairs will be Gerry Beck, Gail Smith and Nancy McKennel, Kerk Flack and Nancy McKennel.

Kirk Flack has been named chairman of the new group with other committee members Tom Beck, Gail Smith, Ahar Van Kirk and Mr. and Mrs. John A. Watkinson, senior advisors.

Meeting each Sunday evening, the YF will have as its first guest Erhard Schaeuffer of Wuttenberg, Germany.

A worker with young people in a large Lutheran church in Chicago.

Here Now! Ford TRIPLE ECONOMY Trucks for '54



Featuring the **Mightiest concentration of power per cu. in. ever built into a truck line!**

AGAIN FORD LEADS—now introduces the only full line of ultra-modern Low-Friction truck engines in the industry! And 1954 Ford Truck engines have less cubic inch displacement for the power they develop, than other make truck engines. Ford's 239 cu. in. Power King V-8, for instance, develops its 130 h.p. on as much as 43 cu. in. less displacement. Smaller-displacement engines normally need less gas! Ford engines also have deep-skirt, more rigid engine blocks to give better bearing support, smoother, more efficient power, longer life. Over a billion miles of trucking have proved their performance and economy. Now they are standard in all Ford's more than 220 truck models—from Pickups to 60,000-lb. GCW Big Jobs.

Now! TRIPLE ECONOMY
for savings in the 3 biggest truck savings areas!

- 1. NEW Low-Friction engines** increase power up to 73%, cut friction up to 35%!
The short-stroke design of Ford Truck engines cuts power-wasting friction, gives you more delivered hauling power with Ford's traditional fuel economy! And you get the highest compression ratio with regular gas!
- 2. NEW Divorized Cabs, Power Steering, Power Brakes, Fordomatic, for faster, safer control!**
New Divorized Cabs cut fatiguing New long-wearing seven-planet gear shift upholstery for year-around comfort. Master-Guide Power Steering stands on Series T-800, optional at extra cost on most other Big Jobs power trucks for Pickup and Fordomatic Drive* for all models through 1-tonners! (*Optional, extra cost.)
- 3. NEW Greater Capacity! New Factory-Built "6-Wheel" Big Jobs gross up to 48% more!**
Ford's expanded new truck lines run from 1/2-ton Pickups to 60,000-lb. GCW Big Jobs! Two brand-new Ford Tonnage-Axle Big Jobs, rated for up to 40,000 lbs. GVW! Two more giant new Ford Cuts Forward Big Jobs, rated up to 55,000 lbs. GCW!

FORD TRIPLE ECONOMY TRUCKS
More truck for your money!

GREAT TV! FORD THEATRE (WWJ-TV, 9:30 P.M., THU.) P.C.A.

HAROLD TURNER, Inc.
Turn to Turner — Your Friendly Ford Dealer
464 SO. WOODWARD AVENUE
PHONES MIDWEST 4-7500 or JORDAN 4-6266
If you're Interested in an Used Truck — Be Sure to See Our Selections

E T R O I T

T R U S T

C O

 SAFEGUARDING YOUR SECURITIES
 A Securities Service Account provides physical protection for your securities, relief from bookkeeping detail and at much investment assistance as you may desire. This service can be adjusted to fit your particular needs. Ask for our folder "The High Cost of Neglecting Your Securities".
FORT AT SHELBY
WO 2-5670