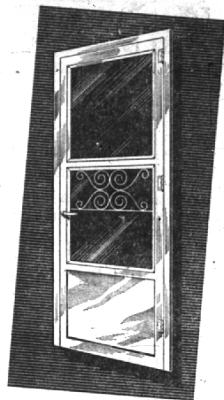


## SPECIAL Aluminum Storm Doors

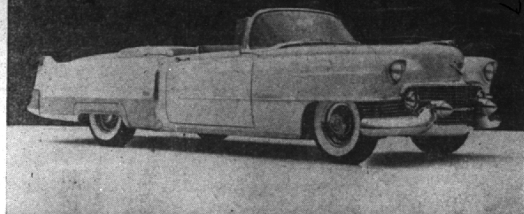
**\$39.95**  
plus tax

- EXTRUDED DOOR
- ALUMINUM JAMBS
- 4 INSERTS
- COMPLETE HARDWARE
- 4 1/2" ALUMINUM GRILLE



### OAK SASH AND SCREEN

2317 WEST 12-MILE ROAD, BERKLEY LI 2-3226  
Open Daily Till 5:30—Friday Till 9 P.M.



POWER STEERING, POWER BRAKES, vertical and horizontal power front seat adjuster and wire wheels are among the many pieces of optional and accessory equipment standard on the specially styled 1954 Cadillac Eldorado pictured above. Panoramic windshield, new front and rear end designs, new low length of body lines and increased interior roominess are a few of the new lines featured. The new models went on display at the Wilson Pontiac-Cadillac, Inc., showroom, 275 No. Woodward, on Wednesday.



**Hugh C. White**  
217 Pierce St.  
Opposite Municipal Bldg.  
Birmingham, Mich.

### WHEN WILL YOU BE SUED?

This is the heyday of damage suits, when a shaky stepladder can cost you \$12,500, and the curiosity of a neighbor's child may pauperize you for life. Guard against such catastrophes with a . . .

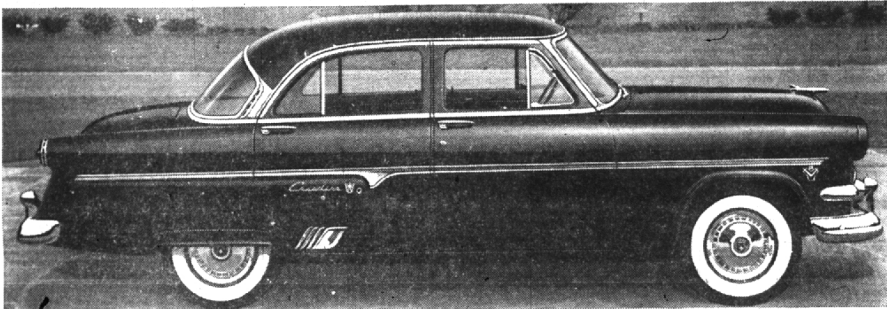
COMPREHENSIVE PERSONAL  
Liability Policy  
\$25,000 protection—\$12.00 a year

### HUGH C. WHITE

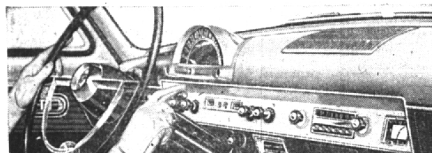
MULTIPLE LINE INSURANCE AGENCY  
Insure—Stay Insured and Rest Assured



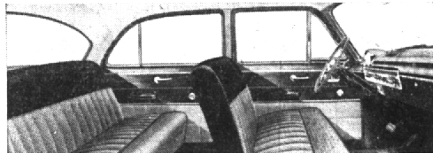
**Bill Roberts**  
Telephone  
Midwest 4-3610



**Fine-car Styling** An outstanding example of fine-car beauty in the low-price field . . . the new Crestline Ford is the fashion car for the American Road.

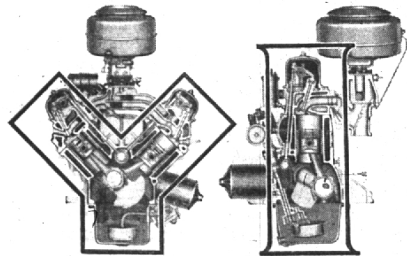


**New Astra-Dial Instrument Panel** is a safety dividend with speedometer placed high on the panel for easier reading. Warning lights tell when generator is discharging or oil pressure falls too low.



**Style-Setting Interiors** in Ford give you beauty from the inside out! Colorful new upholstery fabrics and smart trim are another '54 Ford dividend . . . help make Ford the style leader of the industry.

# Here's What's packing our showrooms!



**The new Y-block V-8**

with the new extra-deep crankcase, has 130-h.p. for a dividend of 18% more power. And you can enjoy V-8 advantages on less gas! Free-turning overhead valves and shorter piston stroke help give longer engine life.

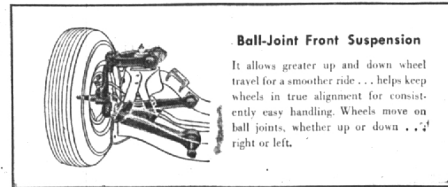
**The new I-block Six**

has 115-h.p. for a dividend of 17% more power. Like the V-8, it has Ford's High-Turbulence Combustion Chamber for more complete and economical combustion of fuel. It's the latest word on high-compression, low-friction Six design.

### Plus 5\* optional power assists

that make driving easier, more pleasant! You can have Power Lift Windows . . . 4-Way Power Front Seat . . . Swift Sure Power Brakes . . . Master Guide power steering . . . and Fordomatic Drive. They're all available in Ford!

The '54 Ford gives you extra Dividends in style, in performance, in ride, with fine-car features you would normally expect to find only in highest-priced cars.



**Ball-Joint Front Suspension**

It allows greater up and down wheel travel for a smoother ride . . . helps keep wheels in true alignment for consistently easy handling. Wheels move on ball joints, whether up or down . . . right or left.

Come in for a Test Drive

## '54 Ford

### HAROLD TURNER, Inc.

Turn to Turner — Your Friendly Ford Dealer

464 SO. WOODWARD AVENUE

PHONES MIDWEST 4-7500 or JORDAN 4-6266

## City-Owned Elms To Get DDT Spraying

If any one of the city's publicly owned 6,000 elm trees gets hit by the Dutch elm disease this summer, it won't be because the city didn't make an effort to prevent it. Fifty barrels of DDT spray were ordered by the city commission this week, and the \$4,000 purchase will enable the city parks and forestry department to spray each of the public trees once during April and have enough in reserve to re-spray infested areas in July.

Commissioners also approved a resolution asking the state to provide enough funds so the department of agriculture can obtain "adequate laboratory facilities and personnel to conduct necessary survey and enforcement program to control the Dutch elm disease."

**CITY FORESTER** William Lebold said that last season it took four weeks for the writing and report back on whether samples taken from trees were infected. Lebold reportedly has asked property owners to protect their elm trees by having them sprayed, particularly in areas close to where infected trees have been found. Last summer, Lebold said, 90 positive cases of the disease were discovered, 20 inside the city, and four outside the limits. Of those in Birmingham, 22 were on private property, only four on city property, the forester emphasized.

"THERE ARE about 6,000 elms on private property in Birmingham, Lebold estimates. "Equally important as spraying an effective Dutch elm disease program," Lebold explained, "is good sanitation. This includes cleaning up of all dead, dying and weakened elm wood. "We have reminded many property owners about the writing or orally to clean up and burn piles of elm wood and brush. We have not had as full a cooperation in this phase as I feel we should have. Public-spirited citizens, subdivision groups, boy scouts, and others can be of infinite help along this line in ridding their section of the city of this material."

IT IS HIS belief, he said, that the Dutch elm disease can be controlled and held within reasonable limits "providing everyone cooperates 100 per cent." Two broods of elm bark beetles—the carriers of the disease—seem to appear each year, the forester explained. One brood comes out in May, the second early in July. Hence the two spraying periods. The beetle eats into the bark.

**LEGAL NOTICES**  
ADVERTISEMENT FOR BIDS for Driller of a Well for Bloomfield Hills High School. Bloomfield Township, Oakland County, Michigan. The Board of Education, School District No. 2, Fractional Bloomfield and City of Bloomfield, Troy, West Bloomfield and City of Bloomfield, all in County of Oakland, Michigan, will receive sealed bids for the drilling and installation of a deep well in connection with the Bloomfield Hills High School, to be located on West Long Lake Road at Franklin Road, Bloomfield Township, Oakland County, Michigan, until 8:00 a.m. Eastern Standard Time, February 1, 1954, at which time and place all bids will be publicly opened and read.

Plans and Specifications may be obtained on and after January 13, 1954 at the office of the Architect, Swanson Associates, Inc., 400 Long Lake Road, Bloomfield Hills, Michigan. Each bidder shall be furnished two (2) sets of plans and specifications, for which \$1.00 must be deposited in advance, same to be refunded when plans and specifications are returned. Proposals must be submitted on forms furnished by the Architect and accompanied by a certified check or bid bond in the amount of five per cent (5%) of the cost of the work in accordance with the specifications. All proposals shall remain for a period of thirty (30) days after official opening of bids. Successful bidder will be requested to furnish satisfactory Performance Bond and Labor and Material Bond in the amount of one hundred per cent (100%) of the Contract, cost of which shall be included in the Proposal. The Board of Education reserves the right to reject any and all bids in whole or in part, and to waive formalities therein.

**BOARD OF EDUCATION**  
Bloomfield Hills School District No. 2, Fractional Bloomfield Hills, Michigan  
David W. Lee, Secretary 44-45

**ADVERTISEMENT FOR BIDS**  
Sealed envelopes for Architectural, Mechanical and Electrical Trades will be received by the Board of Education, School District No. 2, Fractional Bloomfield Hills, West Bloomfield and Troy Townships and City of Bloomfield Hills, Michigan, for the construction of an addition to the Wing Lake School, Wing Lake and W. Maple Road, Bloomfield Hills, Michigan. Plans and specifications will be available January 13, 1954 at the office of O'Dell, Hewlett & Luckenbill, Architects, 450 North Hunter Blvd., Birmingham, Michigan. A deposit of \$15.00 is required for each set. Advertisements will appear in E.S.T. Wednesday, February 3, 1954, at the Office of the Board of Education, Vaughan and Borden Roads, Bloomfield Hills, Michigan. O'DELL, HEWLETT & LUCKENBILL  
450 N. Hunter Boulevard, Birmingham, Michigan. 45

Synopsis of the Minutes of the Regular Meeting of the Southfield Township Board held January 12, 1954. Present: Roeser, Lane, Swen, Brubury, Adams. Absent: Chapman. Minutes of last Regular Meeting approved. Taxicab License request of Berkeley Cab Co. denied. Application of Joseph Beck for Taxicab License approved. Accepted Quik Claim deed to all existing sewers in F. B. Gray's Southfield Woods Subdivision. Adopted amendment to Articles of Incorporation of Rabbin Authority to accept the Township of Troy as a member of the Authority. Approved payment from Welfare funds of 1954 taxes assessed to the bereaved Shop family. Adopted resolution requesting Water Resources Commission to grant extension of time to May 1, 1954. Repealed Ordinance No. 119 and adopted new Ordinance No. 124 to establish Police Department. Passed resolution to request funds for control of Dutch Elm Disease. Accepted transfer of S. D. M. license to Wm. Matich. Public request for S. D. License for Clarence Wise. Adopted amendment to Zoning Ordinance No. 118, rezoning portions in Sections 13 and 12. Revised rate schedule for Southeastern Bell County Telephone Dispatch system. Appointed Harold Rich, 26125 15 Mile Rd. as a Public-Utility Clerk. FARNIE ADAMS, W.M. ROSELER, Supervisor (45)

## Reserve Squadron Awarded Trophy

A reserve squadron attached to the Grasse II Naval Air Station will be presented an award from the secretary of the Navy during ceremonies at the base on Saturday, Jan. 23.

Attending the presentation will be a Birmingham resident who is a member of squadron, VA 335, which will be awarded the Noel Davis Trophy for being "the outstanding attack squadron in the Naval Air Reserve in 1953." He is William K. Downey, 207 Abbey Road.

The secretary's message and commendations from the chief of naval operations, the chief of naval training and the chief of naval air reserve training will be read to the squadron.

Following the ceremonies, the squadron will leave by air transport for Jacksonville, Fla., to hold their two-week annual training cruise. News copy submitted early is necessarily given preference, so the "early bird" usually gets the space.

## CAN YOU RECOGNIZE A GOOD WATCHMAKER?

YES! If he holds the certificate of Chronograph Watch Technician, you can be sure that he has prepared himself for repairing the world's most complicated types of watches. Our skilled Technician has been registered for chronograph watch repair, a distinction now enjoyed by only one of every 25 watchmakers.

We are proud to offer you the highest standard of workmanship at no additional cost to you.

FOR EXPERT REPAIR SERVICE BRING YOUR WATCH TO

## GEORGE ROSS JEWELERS

Official watch inspectors for the New York Central and Pere Marquette Railroads.  
244 E. Maple MI 4-8215

REGISTERED CHRONOGRAPH WATCH TECHNICIAN

## ATTIC INSULATION

pays for itself!

With These QUALITY VALUES  
Zonolite HOUSEFILL Bag \$1.45  
Celotex—Pouring Type ROCKWOOL 40 lb. bag \$1.50  
BALSAM WOOL  
Thick 8 1/2 sq. ft. 6 1/2 sq. ft.  
FIBERGLASS  
Thick, 3-in. . . . 8 1/2¢  
Med., 2-in. . . . 6 1/2¢  
Economy, 1 1/2-in. . . . 5¢

CALL US TODAY

## DON'T PUT OFF INSULATING!!

Do It Yourself Today and Start Saving

Phone Us For Free Estimates & Help

Doing your own REMODELING?

We've Got What It Takes In PANELLING

- Knotty Cedar
- Knotty Pine
- Driftwood
- Weldtex
- Hardwood Plywood Panels

Stop In and Let Us Help You

## Birmingham Lumber AND SUPPLY COMPANY, INC.

1025 HAYNES STREET  
PHONE MI 4-3636

Between Hunter & Adams — 5 Blocks South of Maple  
Hours 7:30 to 5:00 Mon. thru Fri.; 7:30 to 5:00 Sat.