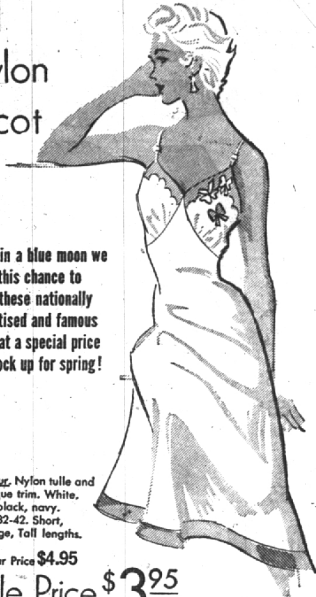




# FAMOUS SEAMPRUFE SLIPS

at a special saving all nylon tricot

Once in a blue moon we have this chance to offer these nationally advertised and famous slips at a special price so stock up for spring!



a) *Lozy-Lette* Nylon lace trim, V back. White, pink, black, navy. Sizes 32-42. Short, Average, Tall lengths.

Regular Price \$5.95  
Sale Price \$4<sup>95</sup>

b) *La Fleur* Nylon tulle and applique trim. White, pink, black, navy. Sizes 32-42. Short, Average, Tall lengths.

Regular Price \$4.95  
Sale Price \$3<sup>95</sup>

OPEN FRIDAY EVENINGS TILL NINE



## CLEARANCE WINTER DRESSES

Junior — Misses — Half Sizes

**SHARPLY REDUCED**

## CLEARANCE

Entire Stock of Winter SPORTSWEAR

**SHARPLY REDUCED**

## CLEARANCE WINTER COATS

Fleeces — Poodles — Broadcloths

**SHARPLY REDUCED**

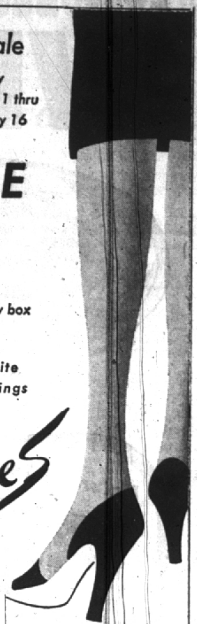
annual sale  
one week only  
Monday, January 11 thru  
Saturday, January 16

**SAVE**

\$1.05  
up to 1 on every box

of your favorite  
seamless stockings

by *Janes*



All Purpose Sheer. 15 denier.  
\$1.25 (regularly \$1.50) 3 prs. \$3.60

Microfilm mesh. 15 denier.  
\$1.25 (regularly \$1.50) 3 prs. \$3.60

Colors: South Pacific and Bali Rosa  
All styles in short, medium and long lengths

My, how you've changed... and all for the lovelier in your

## Warner-Wonderful' Bra Wardrobe

Time was, when the 'right' bra was the result of a search—and how you clung to it through thick and thin! But now, Warner design makes the difference—gives you the chance—and the change to look your loveliest in every fashion from tulip-tops to devastating décolletés.

Come in tomorrow and see! Be outfitted with the just-right bras to fit every occasion and, naturally, to fit you as only Warner's can.



YOU'RE DEVASTATING—in décolleté! In Warner's Merry Widow—cinch, half-bra and garter belt in one. #1311, in white or black nylon, fits A to C cups. \$12.50. Also comes in white cotton, #1313, at \$10.00.

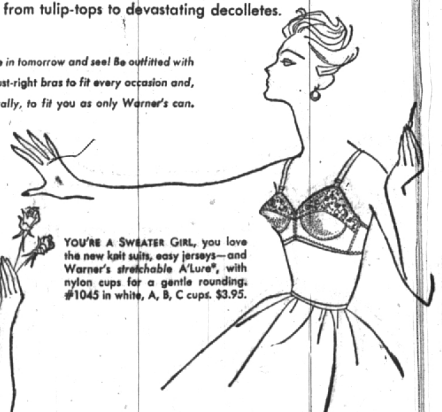


YOU LOOK FOR A LIFT—when you're busiest! In Warner's circle-stitched cotton bra with a stay-put elastic band so it can't ever ride up, twist or bind. #2129 in white, A, B or C, \$2.95. Also in D cup, \$3.95.



YOU'RE A SWEATER GIRL, you love the new knit suits, easy jerseys—and Warner's stretchable A'Lure®, with nylon cups for a gentle rounding. #1045 in white, A, B, C cups. \$3.95.

YOU PICK THE TULIP-TOP—and, for flowering curves, Warner's petal-cup, a long-line to stem the tiniest roll. #1333 in nylon, white, pink, black, B or C cups. \$5.95. Also in a short-line bra, #2299 at \$3.95.



142 W. MAPLE — BIRMINGHAM

Branches in Royal Oak — Ferndale — Mt. Clemens