

Radio Program Title Inspires Album Idea

By ANGELA DADSON
Franklin Correspondent for The Birmingham Eccentric

Prompted by the television program "This Is Your Life" while preparing a conventional photo album story of his son's life for presentation to him, Charles Baker, Sr., former Frankliniter, recently conceived a novel album for the purpose and is now producing it in two forms at his publishing concern in Detroit.

The first type, for presentation to an individual, is embossed "This Is the Book of Your Life" while the second, for family use, is titled "This Is the Book of Our Lives". Both are embossed in gold, typically, with the names of both recipient and donor.

PRESENTED this Christmas to his son, Capt. Charles Baker, Jr., on furlough from the U. S. Army at Fort Lewis, Wash., the first copy begins with early family pictures, birth certificate and a look of baby hair.

It includes, in chronological order, other family and personal photos, track and football certificates and ribbon awards from Barnum Junior High, his Birmingham high school diploma, photos taken on his first job as assistant advertising director for an agency in Detroit, pictures of his fiancée and a certificate of commendation issued by the 22nd Field Artillery Battalion command are also in the album.

THROUGHOUT the book are copies of letters and notes from father to son and pertinent clippings from The Birmingham Eccentric and other newspapers. Baker, Sr., notes an increasing demand for his novel, personalized albums, now being distributed in Detroit and vicinity.

Have You Met . . .

Mr. and Mrs. Edward D. Moore who moved from Redlands, Calif. to 1620 Washington on Dec. 9? They have two children, Randall, age 6, and Scott, age 1. Moore is employed by the R. L. Polk & Co. company.

Franklin Man Enters Nat'l Photo Exhibit In Tallahassee, Fla.

Photographic work by Charles B. Baker, 32665 Colony Hills, Franklin, is now on exhibit at the Art Gallery of Florida State University, Tallahassee, Fla. Baker is one of 50 American photographers whose works are being shown in the first national photography exhibit in Tallahassee's history.

Baker is president of the Detroit Photographic Guild. He has shown items of this work in several national exhibits and has had several prize winning entries. His interest in photography is non-professional. The Florida showing is being held from Jan. 6 to Jan. 20.

★ Smile a Minute . . .

Two little boys were overheard by a nurse in a children's ward discussing their hospital experiences.

Said one: "Are you medical or surgical?"

The other shook his head, "I don't know what you mean," he said.

The first little boy looked scornfully at his friend. He had been a patient in the ward for many weeks.

"Where you sick when you came," he persisted, "or did they make you sick after you came?"

News from Hollywood, via Life: "Once in a Lifetime" has been purchased for production. The title has been changed to "Twice a Day."

To Study Family Problems in Three Test Communities

Three American communities each typical of its type, but widely separated as to geographic location, population, history and personality, have been selected by the Community Research Associates, Inc., to test and demonstrate methods of prevention and control of family problems in a new, million dollar, four-year project.

From East to West, the three are Hagerstown, Md., with a population of 70,000 and a great historical tradition; Winona, Minn., typical mid-western town with a population of 40,000; and San Mateo, Cal., comparatively new and fast-growing metropolitan area of 300,000.

All three study locations will be county-wide in scope to gather both urban and rural data.

Three famous foundations are underwriting CRA projects with funds aggregating \$1,250,000. They are the Grant Foundation of New York, the Hill Family Foundation of St. Paul and the Roseberry Foundation of San Francisco.

The three new projects will be under way by January 1954, and will help check findings concerning social problem patterns which were uncovered in the Community Research Associates' original St. Paul study.

OUT OF THE original study by Community Research Associates came the startling fact that about 6 per cent of the population were absorbing well over half of all health and welfare funds, both public and voluntary.

Further, it disclosed that more than half of these people had developed multi-problem patterns and that to effect rehabilitation and prevent recurring cycles of misery they would require family-centered treatment rather than the scattered attempts by representative of many agencies treating various facets of the problems.

A portion of the million and a quarter fund has already been spent on a classification study of family problems and their relationship to marital partnerships. Further experimentation with the details of the classification study, and the setting up of "rates of disordered behavior" will be a part of the new projects.

FIVE MAIN categories of "rates" of breakdown will be systematically gathered, analyzed and interpreted during the four year projects. These categories are: unusual youthful behavior, unusual family behavior, antisocial adult behavior, maladjustment mortality, and a composite rate which consists of an unduplicated count of families and individuals involved in one or more of the detailed categories making up the major rates.

Methods to be employed have recently had a six months try-out in Winona, where facts already uncovered bear out the findings of the St. Paul study.

Of the Winona families receiving some service from one or more social agencies during the period under review, 7.5 per cent were delinquent in St. Paul this figure was 6.3 per cent.

OF THESE recipient families, almost half were suffering from two or more of the serious major difficulties: financial dependency, ill-health or disability, delinquent behavior, and maladjustment. This group comprises quite a small proportion of the total families or households in Winona County, in fact only 6.8 per cent.

Winona is strikingly close to St. Paul's figure of 6.1 per cent for the same grouping. It is this small group for whom the remainder of the health and welfare funds are being expended.

The inter-connectedness of individual patterns of ill-health, maladjustment, crime, dependency with general family breakdown requires a whole new approach, according to Bradley Buell, executive director of Community Research Associates, and author of the book on the St. Paul study, "Community Planning for Human Services."

SAID BUELL, "We are trying to find out whether new tools are needed to tackle these problems effectively. Basic to our efforts is the participation of voluntary services in family-centered treatment plans and follow-up procedures. What has been missing from the community picture is coordination and integration of services not only at the executive level but at the level of operation."

Commenting on the criteria by which the three test areas were selected, Buell said there were four major guides:

- 1) There must be community leadership of high intelligence, pioneering spirit, and receptivity of a coordinated plan. All three communities meet this specification.
- 2) There must be an uncomplicated set-up with clearly defined and manageable lines of responsibility. All three cities have compact, well-managed community services.
- 3) There must be good basic health and welfare services, capable staffed, to carry out the coordinated planning in the rehabilitation of badly disorganized families.

PLANNING, coordination and evaluation of these three projects will be a team responsibility of all the Associates.

While the same basic methods of study, classification, tabulation and evaluation will be carried on in each of the three communities, each will have a different "focus" or specialized study.

In Hagerstown, which has been a research and experimental station for the United States Public Health Service for a long time, the focus will be on family health problems.

In Winona, typical of a large number of middle western, urban-rural communities, the focus is on dependency.

THE STUDY in San Mateo county will be focused on disordered behavior.

In all three cities during the next four years specific and precise methods of coordinated procedures will be developed, perfected and made ready for use by every American city wishing to improve its health and welfare services, and at the same time prevent problems which tend to destroy American family life.

Have You Met . . .

Mrs. T. E. Cludis, 1063 North Woodward avenue, moved to her new residence from Detroit in November? She has one daughter, Mrs. Paul Tarney. As a hobby Mrs. Cludis passes her leisure time by knitting.

STERNAL'S
for
WHIRLPOOL WASHERS AND DRYERS
FREE CUSTOMER PARKING
In Rear of Store
Open Friday evening to 9:00

"Personality" GLASSES
Eye Examinations
Glasses Fitted
WE OFFER FRAMES THAT FLATTER FACIAL FEATURES
Formerly associated with Square Deal Miller, Detroit, as Optical Dept. as Manager and Optometrist.
Norman R. Becker, O. D. And Staff
129 E. Maple
MI 1-0644

ANNOUNCING
Starting January 15th
NEW PARKING LOT
Corner of
BROWNELL and FOREST
Pop's Parking Lot No. 2

OPEN EVENINGS 'TIL 9
TELEVISION SERVICE
Car Radio Specialists
MI 4-8705
Trained technicians assure you of satisfactory service . . . uninterrupted TV viewing.
ELECTRONIC SERVICE CO.
580 S. Woodward Open 8 a.m. to 8 p.m., Sat. to 6

UNDERWOOD TYPEWRITER ROYAL REMINGTON
SMITH-CORONA
Sales, Service and Rentals
Burroughs Adding Machines
Office Supplies
FORBES PRINTING and OFFICE SUPPLY
415 E. Frank St., cor. Ann
Midwest 4-2224

RENT A NEW CAR
Aladdin Drive Yourself System Inc.
887 N. Woodward Midwest 6-4411

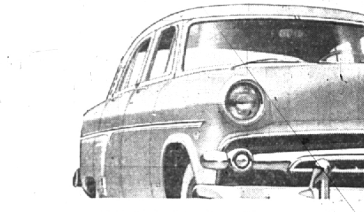
'Tis The Season!
For Large Tree Planting, Removals and Power Sawing (Diseases Diagnosed)
Phone LI 2-8132
Days or Evenings
Trim in the Dormant Season
JOHONNOT TREE SERVICE
Degree in Forestry, M. S. C.

You Are Cordially Invited to Inspect OUR MODERN STORAGE
Built Especially to Store Household Goods
Local and Long Distance Moving
Gaukler Storage Co.
9 Orchard Lake Ave., Pontiac, Mich.
Dial "O" ask for Enterprise 6305



CHARLES BAKER **CPL. CHARLES BAKER**
Album records highlights of son's life.

ELLIOTT FURNITURE COMPANY
Located on East Side of Dixie, 1/2 Mile South of Waterford
FINEST UPHOLSTERING
Our thirty years in Pontiac is your guarantee of satisfaction. Our upholstering craftsmen are experienced tradesmen qualified to refinish and restyle, if necessary, your most treasured pieces. Reupholstered furniture may also be refinished in our complete cabinet and finishing department. Slight additional charge for refinishing. Our material and fabric selection is complete.
CUSTOM MADE FURNITURE
5390 Dixie Highway Phone Orlando 3-2641



With its trend-setting advances . . . Ford's worth even more for '54

It's the Dividends that make it Worth More



RIDE DIVIDEND
New Ball-Joint Front Suspension
This revolutionary new suspension is the greatest chassis advance in 20 years . . . and it's exclusive to Ford in its field. It gives front wheels greater up and down travel to smooth out the going on rough roads. And it helps keep the wheels in true alignment for consistently easy handling. Movement of the wheels is on ball joints—whether up and down, as wheels travel over rough spots, or in steering as wheels turn right or left. Ball joints are sealed against dirt and water.

DIVIDEND IN DRIVING EASE
Ford offers five optional power assists* you might expect to find only in America's costliest cars
Master-Guide power steering does up to 75% of your steering work, yet leaves you with natural steering "feel" on the straightaways. **Self Stop Power Brakes** do up to one-third of the work in stopping. **Formomatic Drive** gives torque converter smoothness and the "Go" of automatic mechanical gears. And only Ford in its field offers **Power-Lift Windows**, both front and rear, that open or close at a button's touch . . . and a **4-Way Power Seat** that adjusts up and down, as well as front and back, at a touch of the controls. They're all worth-while optional extras available in the 1954 Ford!

PERFORMANCE DIVIDEND
New 130-h.p. Y-BLOCK V-8
An extra-deep skirt extends below crankshaft gives greater rigidity for smoother, quieter operation, longer engine life. Free-turning design. Double-Deck Intake Manifold and high-barbance combustion chambers give brilliant new responsiveness. 18% more power, greater economy.
New 115-h.p. I-BLOCK SIX
This new Six has an extra-deep block for greater rigidity, smoother, quieter performance, longer engine life. Free-turning overhead valves, high-barbance combustion chambers, low friction design and Ford's Automatic Power Piston help produce 14% more power with better performance on even less gas.

No car in the low-price field has ever offered so many "Worth More" features as the '54 Ford. In addition to all the features that have already established Ford as the "Worth More" car, you now get a host of brand new dividends. These include a choice of two new deep-block engines, the most modern engines in the industry. You also get Ford's new Ball-Joint Front Suspension . . . beautiful new interiors . . . and styling that will make your heart beat faster.

And, remember, Ford also makes available to you all the optional power assists . . . features you might expect to find only in the costliest cars. If you have not yet seen the new Ford models for 1954, come in and inspect them today! Then Test Drive a '54 Ford . . . and once you do, you'll want to drive it home!

More than ever . . . **THE STANDARD for the AMERICAN ROAD**
'54 FORD
Come in . . . Test Drive it today!