



WHEN THE French poodle, owned by Mr. and Mrs. L. P. Moses, East Long Lake road, produced a total of nine sons and daughters, she added quite a complication to family routine. The brood was just more than the little dog could cope with without a helping hand. Mrs. Moses obligingly took over the job of baby sitter and nursemaid, and has become quite expert at administering the bottle and generally assisting on the chow line when the youngsters need feeding. Her trouble, she says, is keeping track of which has eaten and which has not—they all look alike. (Eccentric Photo)

## BIRMINGHAM BUSINESS BRIEFS

### Open Secretarial Service in City

The metropolitan Detroit office of the nation-wide Trattner Secretarial Service Office System located here recently at 139 W. Maple, over LaBelle's.

The Detroit franchise of the system has been purchased by Alfred J. Rosborough, Jr., 642 Pilgrim, formerly with Brooke, Smith, French & Lorraine, Detroit advertising agency.

The typists, most of them young mothers, type letters once the dishes are done and Junior's asleep. They are experienced secretaries who gave up their office careers to raise families and have lately returned to their typewriters as a source of extra income.

THE CLIENT gets a tape recorder from the Detroit office which he rents or buys. He dictates his correspondence into the recorder at any time during the day or night in his office, home or car. A messenger picks up the tape at five P.M. and delivers it to the housewife. She has a tape recorder and supply of the client's letterheads and envelopes. She types up the letters that night and they are delivered to the client's office early the next morning.

The same girl handles the same account all the time and thus becomes familiar with the client's style of work. All the secretaries have special training which includes keeping all the typed material strictly confidential.

### Industrialization Making Its Mark In Oakland County

While city, township and school authorities continue to be amazed at the phenomenal growth of residential property in Oakland county, industrialization in the county is nearly keeping pace with subdivision developments.

In the July issue of the Regional Reporter, official publication of the Detroit Metropolitan Area Regional Planning Commission, manufacturing employment records since 1950 are reported to have risen 35.4 per cent.

Of an estimated 50,874 employed in manufacturing plants in 1950, a recent check reveals that some 68,861 are now so employed.

AN OVERALL look at the past 13 years more forcibly points out the decentralization of industry from the City of Detroit into Wayne, Macomb and Oakland counties. About 22,145 were listed on manufacturing payrolls in 1940 in Oakland.

Plants locating in Macomb county during the past three years brought the county's industrial workers to 42,797 for a 91.4 per cent gain over rolls in 1950 which listed 26,013.

One of the major reasons for Oakland county's gain was the opening of the General Motors Gun Plant and Amphibious Cargo Carrier Plant in Pontiac, but several small factories in Royal Oak, Hazel Park, Oak Park and Troy township have added substantially to employment in Oakland.

### At Cornell Course

Harold C. Reasoner, 32344 Mayfair Lane, Beverly Hills, assistant director of marketing for General Foods corporation, is one of 25 executives attending the annual executive development program sponsored by the Cornell University School of Business and Public Administration. The course runs from July 19 to August 27.



ROBERT G. SILBAR, (left) 808 Madison, sales executive of the R. L. Polk company, Detroit, checks progress of the boiling hot dogs at the Scout Council's public relations committee meeting at the D-Bar-A Scout ranch last week. Committee members, representing press radio and other advertising media, toured the 1100 acre site, had dinner with the ranch staff and attended an evening program of outdoor activities. With Silbar is Frank Powell, Ranger of the D-Bar-A.

### Conroy and Esler Promoted By Bell Telephone Co.

Because of the retirement of Arthur L. Leazenby, vice president, the Michigan Bell Telephone Company today announced new assignments for two of its high level executives.

Lou Conroy, 1018 Pilgrim, assistant general commercial manager, was named assistant vice president in charge of independent company relations, defense and special staff activities.

Charles K. Esler, 1617 Penitence, general commercial super-

visor, was named assistant to William E. Shook, general commercial manager.

Leazenby's retirement ends a 42-year telephone career which began as clerk in Ferris Haute, Ind. After service with the Indiana and Pacific Bell companies, he joined Michigan Bell in 1923 as a district traffic superintendent.

Formerly district general commercial superintendent, Conroy was promoted to assistant general commercial manager in 1952. He is a graduate of Notre Dame where he gained national sports fame as a basketball star. His 26-year career with the company covers duties in various capacities in Pontiac, Flint and Saginaw before his Detroit assignment.

## RENOVATED & REBUILT

LIKE NEW

- MATTRESSES
- BOXSPRINGS

## IN JUST 1 DAY

Call us for morning pickup and we'll return them that evening, to your specifications of firmness or softness. New found sleep will be yours again.

### OXFORD MATTRESS CO.

42 Years in Oakland County

Phone—  
Dial O ak for  
Enterprise 6316

FOR ESTIMATES

312 W. HURON  
PONTIAC  
FE 2-7695

## AUGUST ABATTOIR\*

We are not kidding when we say that August should be a killer-diller of a month. Look at it this way—you have put a good deal of thought, planning, money, labor, materials and equipment into the development of your lawn, flowers, ornamentals and vegetables.

Just as you are ready to sit back and enjoy your well earned dividends—WHAM-O!—the uninvited guests try to take over and if you are on your feet—if you are not on your feet—they will do so.

### WHO'S WHO IN THE GARDEN

by A. Bugg

**Chinch Bug:** Causes ugly brown patches in lawns. It's a chinch to kill the chinch with CHLORDANE or ROTENONE.

**Brown Patch:** Same color as the chinch bug makes but caused by Rhizoctonia Solane. Attack with SEMESAN or TERSAN.

**Corn Ear Worm:** A beauty—light green to brown with alternating dark lengthwise stripes. A gentle approach to this mucker can be made with CORN EAR WORM DROPS or DDT. (At the same time go after the European Corn Borer—can be knocked off with ROTENONE or DDT.)

**Aphids:** If you don't have lots of lady-bugs to chew them up, spray with BLACK LEAF 40, MALITHOX or ISOTOX.

**Crabgrass:** Show no mercy towards this nasty nuisance. Plug it but good with potassium cyanate (CRAB-NOT or ENDO-WEED C. G. K.)

**Asparagus Beetle:** Two kinds show up around here, 1.) Blue-black with three white spots and an orange border on each wing, 2.) Reddish-brown or orange with 6 black spots on each wing. The kiss-of-death is ROTENONE SPRAY or ARSENATE OF LEAD or ROTENONE DUST.

**Tomato Horn Worm:** A huge green worm sometimes called "The Thing". If you have a small amount of courage, pick them off and drop them in a jar of kerosene. If you are a sissy use ROTENONE dust or spray. (Better still—do both.)

**Black Spot and Mildew:** Swift's ROSE DUST containing CAPTAN & KARATHANE is excellent.

**RUST:** Don't use the oil can. Get some BORDEAUX (not the sauce) or SULPHUR to do battle with these insidious fungi. Check at the store for proper material.

### POISON POINTER

**LEAD ARSENATE & CALCIUM ARSENATE:** Stomach poison, kills by being eaten. Do not use where poisonous residue will be present at harvest time. Dangerous to pets and children.

Substitute:

ROTENONE—asparagus beetle

ROTENONE—squash vine borer

ROTENONE—striped and spotted cucumber beetle

PYRETHRUM—Colorado potato beetle

JETSAM SALE STILL ON—  
SHIP IS RISING STEADILY

\* Abattoir—slaughter house

### Stouffer's Opens On Northland Site

Stouffer's Northland, their 19th in the restaurant chain opened this week with a new figure in the spotlight.

The red ribbon ties were cut by 12 year-old Dennette Stouffer, who gracefully performed the rite done in the past by her grandmother, one of the restaurant's founders.

According to Charles Walsh, manager, this will be the first Stouffer's in Detroit to offer continuous seven-day service to the community. Regular schedule will be luncheon from 11 a.m. and dinner until 9 p.m. The restaurant will remain open later on shopping nights, Sundays and holidays it will serve complete dinners from 12 noon to 8 p.m.

The restaurant has a seating capacity of 455, with four dining rooms, counter service and a cocktail lounge. A private parking lot is provided.

### CPA Certificate

Howard Schreidell, accountant for Nat W. Benton, 148 So. Woodward, was granted a certified public accountant certificate by the Michigan State Board of Accountants this week.

Thousands of people read The Eccentric Classified Ads. So, remember, if you want to sell that hard-to-get-rid-of-article, advertise it in the Want Ad section of The Birmingham Eccentric.

**BIRMINGHAM FRUIT CO.**  
124 N. Woodward Midwest 4-4030  
S.D.M. License  
S.D.D. License  
Free Parking In Rear of Store

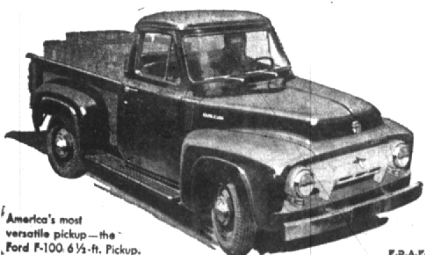
ADVERTISEMENT

OUTBOARD MOTORS

# Why you should buy a New FORD Truck NOW!

## 3 REASONS WHY!

- 1 New Ford Trucks give you more gas-saving power, plus greater performance, comfort and economy than any other truck line!
- 2 The repair costs and "downtime" you'll save with a new FORD TRUCK will really boost your operating profits!
- 3 Your old truck will never again have as high a trade-in value as it has right now! You'll gain by trading today!



America's most versatile pickup—the Ford F-100 6 1/2-h. Pickup.

Now is the best time to get the best deal—and you'll get it from your FORD DEALER!

**HAROLD TURNER, Inc.**

Turn to Turner — Your Friendly Ford Dealer

444 SO. WOODWARD AVENUE

PHONES MIDWEST 4-7500 or JORDAN 4-6266

**McCLELLAN-BALL CO.**  
YARD GARDEN SUPPLIES FARM KENNEL  
BIRMINGHAM, MICHIGAN  
Phone MI 4-4133 159 Brownell St.