



Fill it up ! With Great Values, Great Brands

**Whigley's**

from

- DURKEE'S PURE BLACK PEPPER** 4-OZ. CAN **35¢**
- PILLSBURY ANGEL FOOD** Pkg. **49¢**
- HUNT'S WHOLE Unpeeled APRICOTS** 2 2½ CANS **49¢**
- DUNCAN HINES CAKE MIX** • White • Chocolate • Yellow • Spice 3 Pkgs. **\$1.00**



**DOLE Hawaiian PINEAPPLE JUICE**  
Giant 46 Oz. Can **25¢**

- INSTANT COFFEE — BORDEN'S 5-oz. Jar **\$1.49**
- TRELLIS ALL GREEN ASPARAGUS 2 303 Cans **29¢**
- LANG'S FRESH DILL PICKLES 1½-gal. Jar **49¢**
- DUNCAN HINES BUTTERMILK PANCAKE MIX 18-oz. Pkg. **25¢**
- PILLSBURY'S PIE CRUST 2 Baked Pkgs. **29¢**
- BARBECUE SAUCE OPEN PIT 18-oz. Decanter **39¢**



**KRAFT MIRACLE WHIP SALAD DRESSING**  
Big Quart Jar **43¢**

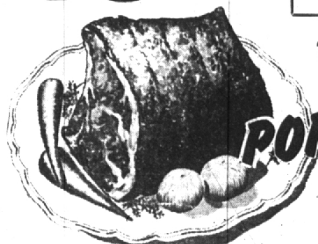
- KRAFT MUSTARD** Salad or Horse Radish 2 6-oz. Jars **19¢**
- FRENCHETTE** Non Fattening Low Calorie Dressing 6-oz. Bottle **29¢**
- L&S BARBECUE RELISH** 12-oz. Jar **25¢**
- L&S HOT DOG RELISH** 13-oz. Jar **25¢**
- L&S WHOLE SWEET PICKLES** 24-oz. Jar **39¢**

Ground Fresh As You Like It—When You Buy It  
**DEL CREST COFFEE** Lb. Bag **\$1.09**  
Thrifty 3-Lb. Bag \$3.23

**CAP Imported CORNED BEEF**  
12 Oz. Can **35¢**

SITRUE — ½ PRICE SALE  
**FACIAL TISSUES** 2 Lge. 400-ct. Pkgs. **39¢**

- DOGGIE DINNER** DOG FOOD 3 1-lb. Cans **25¢**
- ENVELOPES** Household Helper 100-ct. Pkg. **29¢**
- STATIONERY** Household Helper 125-ct. Pkg. **29¢**



**Tender Young PORK LOIN ROAST**  
First 7 Rib Cut **39¢ lb.**

- HILTON'S OYSTER STEW** 10½-oz. Can **29¢**
- MASON'S SOFT DRINKS** • Double • Grape • Hot • Blue • Cherry 6 12-oz. Cans **59¢**
- MILKO STRAWS** 100-ct. Pkg. **10¢**
- BONDWARE COLD CUPS** 48-ct. Pkg. **43¢**
- BONDWARE HOT CUPS** 24-ct. Pkg. **43¢**
- PICNIC PLATES** Bondware 9-in. White 40-ct. Pkg. **39¢**
- U-BET ICED TEA** Concentrate Sweetened 8-oz. Blt. **23¢**

**STAR KIST Chunk Style TUNA LIGHT MEAT**  
For Salads or Sandwiches CAN **29¢**

- SLICED BACON** Arnold's Lean Sugar Cured Lb. **63¢**
- GROUND BEEF** For Hamburgers, Meat Loaf, Spaghetti and Meat Balls Lb. **39¢**
- PORK STEAKS** Cut from Tender Lean Boston Butts Lb. **53¢**
- LEG O' VEAL** Michigan Milk Fed Lb. **45¢**
- VEAL ROAST** Michigan Milk Fed Shoulder Cut Knuckle Bone Removed Lb. **43¢**
- GLENDALE ZESTES** Pure Roasted Pork Sausage 10-oz. Pkg. **59¢**
- PERCH FILLETS** Fresh Lake Erie Boneless Pan Ready Lb. **53¢**



**Naturally Tender Beef RIB ROAST**  
Table Trimmed 7-in. Cut **69¢ LB.**



U. S. No. 1  
**CAROLINA Yellow Elberta FREESTONE PEACHES**  
2-IN. MIN. **3 lbs. 39¢**

- CALIFORNIA CARROTS** 2 1-lb. Pkgs. **29¢**
- GREEN BEANS** SNAPPY FRESH 2 Lb. **29¢**
- CALIF. SUNKIST LEMONS** 352 SIZE 6 for **29¢**
- BLUEBERRIES** MICHIGAN CULTIVATED Pint **29¢**
- CUCUMBERS** HOME GROWN Long Green Slices 3 For **19¢**
- SEEDLESS GRAPES** California Thompson Lb. **29¢**



**MEL-O-SPRED Yellow MARGARINE**  
2 1 lb. Ctns. In Qtrs. **45¢**

**STO-AWAY**  
Heat N' Eat  
**CHICKEN DINNER**  
16 oz. Pkg. **79¢**

- REFRESHING LIMEADE Seidl Sweet 8 6-oz. Cans **\$1.00**
- HOME MADE COTTAGE CHERRY PIE 8½ 9-in. Family Size **79¢**
- FRESH FROZEN TOP FROST PEAS 6 10-oz. Pkgs. **\$1.00**
- TASTE-O-SEA FISH STICKS 10-oz. Pkg. **49¢**

**COTTAGE QUICK FROZEN WAFFLES**  
Ready to Toast 6 oz. Pkgs. **49¢**

Get Your  
**FREE BASEBALL TICKETS**  
to the  
**AMERICAN LEGION ALL STAR DOUBLE HEADER**  
at  
**BRIGGS STADIUM**  
on  
**AUGUST 14th**  
at  
**WRIGLEY'S**  
No Purchase Necessary — Just Ask for Ticket at Your Whigley's Market

- Wisconsin Brick or Muenster Cheese** Pounds or Slices Lb. **45¢**
- North Bay Aged** 2 Years Old Lb. **69¢**
- Pabst-ett Cheese Food** 2-lb. Family Loaf **69¢**
- Deans Chocolate Drink** 8-oz. Tins **29¢**
- Walker's Pure Clover Honey** 5-lb. Glass **99¢**
- American or Pimento Loaf Cheese** Pounds or Slices Lb. **49¢**



★ **635 SOUTH WOODWARD** ★

Open Thursday, Friday and Saturday 'Til 9 p.m.