

## Southfield's Water Authority Changes

### Bloomfield Twp. Home Building Cited in Report

BLOOMFIELD TWP. — While the city of Birmingham scores high in the metropolitan Detroit area for its increase in home building during the past four years 1950 to 1954, Bloomfield township led the field in this area percentage-wise and Southfield accounted for the greatest number.

This information was released this week by the Detroit Metropolitan Area Regional Planning Commission as prepared by the Commission's population and housing section.

The housing estimates were made after reviewing building permits, Detroit Edison records and surveys made by The Detroit News.

Of all governing units in Oakland county included in the report, Bloomfield township's growth of 1,473 home units constructed in the past four years was second only to the City of Oak Park in percentage comparisons. Bloomfield's rate of growth was approximated at 138 percent.

SOUTHFIELD township ranked fourth in the percentage increase in new homes for a 65.1 percent.

Birmingham followed Southfield with a 46.4 percent increase for 2,162 dwelling units.

Of the three counties covered in the report, Macomb county led in the percentage rate counting an increase of 41.1 percent over the past four years.

Oakland county's gain was set at 32.4 percent with 35,361 new homes while Wayne, although adding 79,172 new units showed a percentage gain only 11.8 percent.

Bloomfield Hills added 1,033 homes in the period from April 1, 1950 to July 1, 1954, a 30 percent increase.

Southfield registered 5,203 homes in 1950 while Birmingham numbered 4,568 and Bloomfield township 1,957.

Troyship gained from 2,881 to 3,560 homes which represented a percentage mark of 32.3 while West Bloomfield added 201 percent with 2,860 homes this year as compared with 2,378 in 1950.

### Troy Schools To Register September 8

Announcements of the opening of Troy township schools on Sept. 8 and of schedules for school buses were released by Stuart Baker, schools superintendent.

With the exception of new registrants in high school students in all other grades will register on opening day. High school classes will operate on a full-day basis the first day whereas the elementary and junior high grades will dismiss at noon. All grades will go on full-day schedules the following day.

Classes will start at 8:45 a. m. at Log Cabin, Poppleton, Smith and Troy No. 2, and at 8:40 a. m. at Big Beaver, Troy Union and Colerain. High school classes will begin at 8:15 a. m.

A faculty meeting of all teachers and principals of all schools at Troy high school will be held Tuesday starting at 9 a. m.

THE HIGH SCHOOL office will be open for new registrations and registration changes beginning August 30 from 9:30 a. m. to 3 p. m.

In the afternoon, the teachers will meet at 7:30 a. m. at their respective schools.

Students in the Big Beaver, Log Cabin, Troy Union and Colerain areas, kindergarten through sixth grade, will register at their respective schools.

Students in the Troy No. 2 and Smith areas will register as follows: kindergarten, second, fourth and fifth at Troy No. 2; first, third and sixth at Smith school.

Colerain students, grades through six will register at Colerain; kindergarten will register at Troy.

The new Baker Junior High School is ready for occupancy and will register the seventh and eighth grade students. Students will go directly to home rooms for registration by home room teachers. The principal will be in his office for parental conferences beginning August 30, 9 a. m. to 3 p. m.

BUSES WILL start to pick up children at senior high school students at 7:30 a. m. Classes at the High School will start at 8:15 a. m. and at the Junior High School, beginning Thursday, all schools will operate full time.

The hot lunch program will operate in the high school only on Wednesday. It will begin on Thursday at the Junior High School, Poppleton, Troy Union, Troy No. 2 and Colerain Schools. All other schools will have a hot lunch program.

However the discrimination is the state's and not the school district's with each new enrollee of parents, school authorities are called upon to explain why school transportation is not furnished for city students.

FLINT MAN INJURED Sunday in Troy

TROY — A Flint man suffered a possible skull fracture when he crashed the rear of a Troy car into the rear of a Rochester car at Rankin. He was admitted to St. Joseph Mercy hospital.

He is Robert J. Wagborne, 22, of Flint who struck the rear of a car driven by Hugh Arnold Fitzpatrick, 45, 3070 Rochester. According to investigating officers both cars were driving south on Rochester. Fitzpatrick was slowing to make a turn when he was struck from the rear by Wagborne.

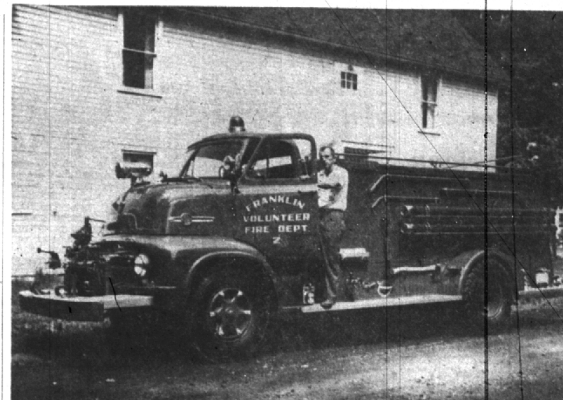
Lane A. Fitzpatrick, 44, occupied the driver's seat of the Rochester car and was treated for cuts and abrasions to arms and elbows at St. Joseph's and released.

### Classrooms Ready

BLOOMFIELD HILLS — Building progress reports revealed to the Board of education Monday night indicated that 14 new Lake classrooms would be ready within the opening week of school, with the exception of the new purpose room. The Vaughan additions will be ready with the exception of the new gymnasium which will be laid after school classes are started.

### Classrooms Ready

BLOOMFIELD HILLS — Charged with planning and building new buses for the coming school year was authorized by the board of education at a meeting Monday night. The board entered into an agreement with Greyhound Lines for the purpose of which will provide the school system with four 62-passenger buses and three 42-passenger buses.



FRANKLIN'S NEW TANKER MAY BE STATE'S LARGEST Fire Chief Bill Jones Inspects New Vehicle (Eccentric Photo)

### More to School Than 3 R's Taxpayer Knows

There's more to this business of educating a child than meets the eye. Each year three school districts in the Birmingham area spend sizeable sums in just getting children to and from school. While most of these funds for transportation are reimbursed to the school districts by the state, it is nevertheless tax money somewhere along the line.

For example the three school districts—Birmingham, Southfield and Bloomfield Hills—will spend \$4,949,061 during the coming 1954-55 school year on transportation for an estimated 66,000 students.

Of this sum, they will spend \$14,720 on transportation for 6,600 students—less than half the enrolled number—to and from school.

THE REMAINING \$1,018 boys and girls will provide their own transportation, because many of this number are not eligible for school-furnished transportation.

Why not?

A state stipulation provides that a school district such as Birmingham may only transport those students residing outside the city limits such as Franklin, Walnut Lake and Bloomfield Hills.

This means that less than 21 percent of the Birmingham students benefit by state-furnished transportation. This of course has been a bone of contention to residents.

### Two School Districts

BLOOMFIELD — The township fire department went out on two fire runs over the weekend. One was on Sunday at 11:00 a. m. on Highwood and Greenlee. The other grass fire was on Ward road Saturday.

By far the largest budget, \$70,000 is earmarked by Southfield for this purpose. Unlike Birmingham, 100 per cent of the Southfield students are eligible for the school furnished transportation. However, only about 2800 of 6000 students are expected to use it.

Birmingham spent \$51,730.14 on a fleet of 22 buses to carry 1,631 students of 7,033 enrolled and to from school. A larger sum is anticipated for this year. Last year small community groups like Pembrook and Beverly chartered Greyhound buses to carry the children to school. This won't be necessary this year because of the new schools opening in these residential additions.

### Approximately 100 per cent

of the Bloomfield Hills students use the school provided transportation.

An estimated 28,875 taxpayers will be liable for \$331,000, or \$13,938.65 tax operations for 26 public schools' operations. This is on the basis of 1953 assessed valuation of \$181,279.07.

On \$53,357,236 property evaluation of Southfield schools, with operation tax levy of \$395.62 towards operational budget of \$1,162,100, the schools, with a balance coming from state aid and other sources.

Over a \$24,000,000 property evaluation, Bloomfield Hills yields \$298,000 to four schools with a total budget for \$387,000. With by far the largest property evaluation with \$103,921,840, Birmingham yields some \$1,244,938.00 in monies towards an operational budget of \$2,615,603.04 for 12 schools.

### 85 Educators Expected to Attend Workshop Sept. 1-2

BLOOMFIELD HILLS — Fifteen new teachers will be introduced to some 70 educators attending a two-day workshop of schools in the district at Vaughan school September 1 and 2.

The two-day program will run from 9:30 a. m. to 3 p. m. each day with a luncheon at noon in the school cafeteria.

Panel moderators include Doctors Ben Dolan and Ray Kihoo, education consultants from the University of Michigan at Ann Arbor, who will lead discussions during the morning sessions.

The afternoon agenda topics concerning major education problems.

Teachers will adjourn to workshop groups according to their area needs for assistance during the morning sessions.

The afternoon sessions will be given over to general roundtable meetings on the major items to be studied further during the school year.

### SPECIAL Initiatives

have been extended to members of the school district board of education and their wives to attend Thursday's luncheon at Vaughan to meet new members of the schools' faculties.

Friday's program will be given over to discussions of subject matter concerning "Visual Aid and Youth Education." A demonstration will be given as to the proper means of loading and unloading a motion picture machine.

On the afternoon agenda teachers will adjourn to their respective classrooms for individual planning and organization preparatory for the opening of school.

### Two Grass Fires

BLOOMFIELD — The township fire department went out on two fire runs over the weekend. One was on Sunday at 11:00 a. m. on Highwood and Greenlee. The other grass fire was on Ward road Saturday.

### Franklin Boasts One of State's Largest Tankers

FRANKLIN — The Franklin Volunteer Fire Department now boasts what is believed to be the biggest tanker in the state and, since no truck of like challenge has been reported in national fire service magazines in recent years, this may well be the largest of its kind in the nation.

Carrying 1600 gallons of water to feed the department's 300-gallon pumper truck, the big machine weighs 32,000 pounds, loaded, and carries its own pump, hose, ladders and other equipment to be a complete fire apparatus in itself.

It carries 300 feet of 1 1/2 inch hose and 200 feet of one inch booster hose, each preconnected to instant use, plus 600 feet of 2 1/2 inch hose for longer reaches and feeding multiple smaller lines. All lines are equipped with combination fog and solid stream nozzles that the truck carries fog applicators for reaching into awkward locations.

The ENGINE-heated freeze proof pump, with automatic pressure regulator, will handle up to 500 gallons per minute at the normal 120 pounds pressure and will build up 350 pound pressure if the occasion demands it.

The chassis has a 165-horsepower V-8 engine, speed forward transmission, 2-speed axle and fall air brakes to handle the heavy load and dual mid-range tires on the rear to pull through almost any road condition.

Two way radio is installed for communication between the trucks and with Southfield and other departments in the vicinity. The heavy electrical demand of the numerous lights, radio and two-tone siren is handled by a dual battery system and a 90 ampere generator.

THIRTY of the volunteers met last Sunday morning for a training session in the operation of the

### Franklin Boasts One of State's Largest Tankers

FRANKLIN — The Franklin Volunteer Fire Department now boasts what is believed to be the biggest tanker in the state and, since no truck of like challenge has been reported in national fire service magazines in recent years, this may well be the largest of its kind in the nation.

Carrying 1600 gallons of water to feed the department's 300-gallon pumper truck, the big machine weighs 32,000 pounds, loaded, and carries its own pump, hose, ladders and other equipment to be a complete fire apparatus in itself.

It carries 300 feet of 1 1/2 inch hose and 200 feet of one inch booster hose, each preconnected to instant use, plus 600 feet of 2 1/2 inch hose for longer reaches and feeding multiple smaller lines. All lines are equipped with combination fog and solid stream nozzles that the truck carries fog applicators for reaching into awkward locations.

### THE ENGINE-heated freeze proof pump

with automatic pressure regulator, will handle up to 500 gallons per minute at the normal 120 pounds pressure and will build up 350 pound pressure if the occasion demands it.

The chassis has a 165-horsepower V-8 engine, speed forward transmission, 2-speed axle and fall air brakes to handle the heavy load and dual mid-range tires on the rear to pull through almost any road condition.

Two way radio is installed for communication between the trucks and with Southfield and other departments in the vicinity. The heavy electrical demand of the numerous lights, radio and two-tone siren is handled by a dual battery system and a 90 ampere generator.

### THIRTY of the volunteers met

last Sunday morning for a training session in the operation of the

### Lathrup May Join Authority

SOUTHFIELD — Final amendments to the Southeastern Oakland County water authority articles of incorporation, concerning voting powers and capacity demands of authority members were approved by the township board Tuesday night.

Southfield will become the third largest user of water among the seven community members once the authority huge water main is constructed on Greenfield road from the Detroit water system.

The latest changes were made to allow the new City of Lathrup Village to join the authority when one of its houses to become a constituent member.

Southfield's original request for a 1970 maximum daily demand of 6.5 million gallons of water was pared to 5.5 million with the incorporation.

### LATHRUP HAS tentatively asked for 5.5 million as the maximum daily demand by 1970.

The incorporation articles are also being championed by Lathrup representatives to cast one vote on the authority's governing board.

Southfield's 5.5 million gallon demand will give the township two votes in the authority.

Royal Oak is asking for the giant share of water from Detroit with a request for 6.5 million gallons, a far second with Birmingham asking two million.

Royal Oak will have four votes on the board, with Birmingham having two.

Berkley will also be allowed two votes with demand for five million gallons a day by 1970.

Huntington Woods is asking 3.3 million, Pleasant Ridge, 1.5 million and Clawson, 2.6 million.

### THE TOTAL maximum demand for the authority has been set at 42.1 million gallons, an increase over the 40.2 million figure previously established.

Huntington Woods originally had asked for only 1.7 million gallons but its capacity was not to serve the Mackinac golf course or the Detroit Zoological Park.

Lathrup may not be able to become a constituent member of the SOC authority until a favorable three-fifths vote of the electorate approves the city's acceptance of the subdivision's water system from its own Louise Lathrup Kelley. The system is being leased from Mrs. Kelley at the present time.

### OK SDM License

SOUTHFIELD — Township approval for an SDM beer and wine license for the Kroger company's store in Southland Center was forwarded to the Michigan State Liquor Control Commission Tuesday night by board members.

The purchase of which was made possible by the contributions of a high percentage of the residents of the Franklin fire district. The offers will be solicited soon so the \$14,000 cost can be written off. The fifty percent increase in water available upon approval is expected to double the department's effectiveness at larger fires.

### SCOUTS AND LEADERS of Southfield, members of Troop 8-6, were among the Council's many units to take part in a typical western-style Ranch Round-Up held at the D-Bar-A Ranch near Metamora last weekend.

Approximately 1,500 Scouts, leaders, families and friends came to enjoy the weekend program of horsemanship, bull-whipping, axeman-ship, log sawing and Indian lore. Pictured left to right, learning the finer points of fire-by-friction from "Uncle" Otto C. Hornung, world's famous fire-by-friction expert who took part in the mammoth program are Assistant Scoutmaster Al Krampetz, 27375 Northwestern; Uncle Otto; Assistant Scoutmaster Fred Warner, 27378 Northwestern; and Junior Assistant, Al Shady, 23710 101; Mile Rd.

### Old Chatfield Home Survives 125 Years

TROY — Built 125 years ago, the old Chatfield homestead, now in possession of Mr. and Mrs. E. H. Gasow, on the northwest corner of Wattles road and Coolidge highway, is a landmark in the North Adams area.

Steven Chatfield and his grown-up sons, Ira, Dan and Edward, made the bricks for the Chatfield farmhouse from clay found on the land. Even the door found on the land. Even the door partitions within the house are of brick, according to Mrs. Gasow.

The land originally was purchased from the government by Jonas Sayre in June 1822, but because there are four land entries in the government registry under Sayre's name (a total of 650 acres in different sections), it might be supposed that Sayre purchased the land for speculative purposes only.

Stephen Chatfield came to this vicinity from Ontario county, New York state, some time in the early 1820's, and purchased that part of Sayre's holdings in the southeast corner of section 18.

Edward, son of Stephen, remained on the farm, but sons Ira and Hiram came to Birmingham to live, where they were to leave a mark on community life.

The old homestead remained in the possession of the Chatfield family until 1920, when it was purchased by Stephen Chatfield still own land north and east of the original land purchase.

### Franklin School Ready for Sept. 7 Opening

By ANGELA DADSON Staff Correspondent

FRANKLIN — Franklin school will open at 9 a. m. on Tuesday, September 7 for all but the kindergartners, for a half-day session, with the regular school buses providing transportation. There will be two half-day kindergarten sessions on Wednesday.

Children in the morning group will be transported by the same bus which carries the higher-grade students and those in the afternoon session will be served by the after-lunch-hour buses.

Marsden Wilson will continue to serve as principal, with Edwin Crandell moving over from the Bloomfield Village school to become full-time assistant principal of Franklin school.

On the teaching staff are Miss Sylvia Morris, kindergarten; Mrs. Jacqueline Koch, first grade; Mrs. Miriam Levine, second grade; Mrs. Mary Kopas, new combined second-third grade; Mrs. Lillian Gayle, third grade; Mrs. Carol McClelland, fourth grade.

MRS. LOUISE CLAIBorne, fifth grade; Mr. E. Pokornowski, combined fifth-sixth grade; and Mrs. Daisyelle Richards, sixth grade. Special teachers will be Miss Helen Miller, reading supervisor; Mrs. Katherine Holmes, art; Mrs. Miriam Kopp, speech; Miss Maxine James, instrumental music; Miss Phyllis Gardner, music; Mrs. Howard Sumner, physical education; and Mrs. Carolyn Loughran, visiting teacher. The school nurse will be Miss Frances Curtin, the building supervisor James Bowden.

The newcomers on the staff include Edwin Crandell, assistant principal, who has taught the last three years at Bloomfield Village school. He studied at Wayne University, attained his Master's degree there working in administration and supervision. His father was school superintendent in Birmingham several years ago.

MRS. MIRIAM Levine, new second grade teacher, lives in Detroit. She holds an A.B. degree from the liberal arts college at Wayne University. Having raised a family, she went into educational studies and enrolled in first grade practice teaching at Wayne

University. She holds an A.B. degree from the liberal arts college at Wayne University. Having raised a family, she went into educational studies and enrolled in first grade practice teaching at Wayne

University. She holds an A.B. degree from the liberal arts college at Wayne University. Having raised a family, she went into educational studies and enrolled in first grade practice teaching at Wayne