

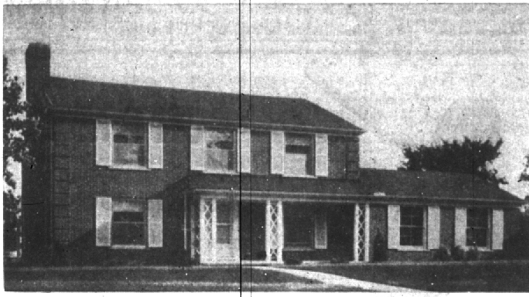
2 Delegates Named For JA Conference

Two Birmingham teenagers, John M. Fall, 487 Smith, and Valerie Berway, 2201 Ougham, have been named delegates to the

annual national Junior Achievement conference. The session will be at Miami University, Oxford, Ohio, with 41 attending from the southeastern Michigan area. The meeting, which will have more than 500 youthful delegates, will deal with JA activities

throughout the country, youth problems and other related subjects. Businessmen and women from all fields will be present as "Inspirations to Youth". The area group will leave Detroit by bus on Aug. 23, returning to their homes four days later.

BLOOMFIELD VILLAGE



3501 Broadway Blvd.

THE ULTIMATE IN GRACIOUS LIVING!

This center entrance colonial offers 4 spacious bedrooms, 2 sparkling baths plus two lavatories. See its wonder-age kitchen and cheery breakfast room. Fit your books into its imported mahogany paneled library. Come expecting to see the best—Leave knowing you have!

Open Thurs. Eve. 7-9 or shown by appointment.

HALL & YOUNG, Inc.

Maple Rd. at Telegraph

BIRMINGHAM: Midwest 6-2700

DETROIT: JOrdan 4-5668

GAS AVAILABLE!

FOR HOME HEATING
TO 25,000 NEW USERS
SERVED BY THE CONSUMER POWER CO.

don't
replace a furnace
with a furnace!

when you can have air conditioning!

If you are replacing a worn-out furnace this year, this is the best time to modernize your home with year-round air conditioning. Let us show you how easily we can remove your old furnace and put a new Carrier Weathermaker in its place. The labor costs will be almost the same and you can use the same ducts that you now use for heating. And when it's installed, the Weathermaker will keep you cool all summer as well as warm all winter. You'll want air conditioning for your home someday—why not do it right now?

This is the compact Carrier Weathermaker. It cools with electricity, heats with gas or oil, and needs no water.

Carrier year-round Weathermaker

AVAILABLE ON 36-MONTH FHA TERMS
PHONE ENTERPRISE 6182 FOR FREE ESTIMATE

JAMES and ROACH, Inc.

282 E. MILWAUKEE

DETROIT 2, MICH.

SINCE 1922

Athletics, Academics Blended at Dartmouth

By PETE HOFFMAN
(27428 Lathrup)

"And the whole curriculum was 500 gallons of New England Rum." According to the song, the noble savage went for this course of study offered by Dartmouth's early oracle, Eleazar Wheelock.

Contrary to belief of a few skeptics in and around the Boston-Cambridge area, the student of today has a greater thirst for knowledge and strives vigorously to prepare himself for a modern world.

Dartmouth College doesn't hand out "first-water" to those who flock to Hanover in quest of an education. The men matriculate not in an institution, but an active academic, athletic, and social matrix.

A combination of these three parts in proper proportion is the opportunity for profound development intellectually and physically.

DARTMOUTH's academic reputation needs little comment. Because of its small size, the ratio of faculty to students is very high. The strivings of the individual are more easily recognized, aided and encouraged, whereas, in large "educational factories," the student is merely a seat number.

Although primarily a liberal arts college, a helping hand is extended to those who wish to specialize. The Tuck School of Business, Thayer School of Engineering, and the premedical courses are nationally recognized as first-rate.

The frosting on the "academic cake" is the "Great Issues" course given to all the students in the senior year. Knitting together current events and listening to the men who make them, enables the individual to grasp his diploma with more confidence after four years.

DARTMOUTH encourages the students to take part in athletics, and for the first two years all students are required to engage in some form of physical activity, after successfully passing a proficiency test.

Healthy competition, emphasis on teamwork, and good sportsmanship is the platform of the athletic program. Win or lose, the school is behind the team, and the coach is not fired if he has a 2-7 record.

School Additions In Local Areas Ready This Fall

The opening of a new Catholic elementary school will be the extent of new classroom construction for Catholic children in this area. The \$188,000 Our Lady Queen of Mary's school on Pierce will open its doors to pupils for the first time in September when the school's six classrooms, clinic and general offices are put in use.

The cast figure also represents underground foundations for six more classrooms to be added later—possibly two of these rooms will be constructed in April. The school also has been built for a second floor to be added at a later date and the heating and plumbing facilities have been installed to accommodate a maximum size of 22 classrooms.

GROUND WAS broken for the Beverly Hills school on October 3, 1952, the second anniversary of the parish.

In this first unit, the school will accept only students from the first through the fifth grades. Plans call for addition of the sixth grade next year, the seventh grade in 1956 and the eighth grade in 1957.

According to the Rev. Lucian A. Hebert, registration for the school has been closed as the 300-pupil capacity has been reached for the fall term.

Four Sisters and three lay teachers will make up the faculty at the new school.

Mother Superior will be Sister Mary Helen who has been teaching at Shrine of the Little Flower High School in Royal Oak.

All four Sisters are of the Sister of Charity Order of Cincinnati. They are Sisters Mary Bridget of Chicago, Mary Jerome of Cincinnati, and Bernard Mary of St. Lukes, Detroit.

Lay teachers will be Mrs. Lorraine Barney, Mrs. Frank Murphy and Mrs. Frances Sempowski.

IN THE second expansion program within the Southfield school district within the past three years, construction is being hurried on three building additions to provide 85 new classrooms.

At the Annie Lathrup school, which serves the fast-developing City of Lathrup Village, 17 classrooms, a cafeteria and storage space are being added.

The two-story south wing will enable the school to house another 300 elementary students.

SCHOOL OFFICIALS hope to have the addition in use shortly after the opening of the school year.

The seven-classroom addition at East Southfield has been finished with space also available for a new boiler room and offices.

The additional room in the south wing at this school will accommodate 245 more elementary pupils. Southfield elementary school addition also is expected to be finished shortly after the September school opening.

The addition on the north side of the school will include 10 classrooms and a multi-purpose room and will hold junior high school grades.

The multi-purpose room, school officials explain, can later be converted to a library, shop and home economics room.

Church Buys Lot

Birmingham's city commission Monday approved the sale of lot 862 of Sheffield Estates to Our Shepherd Church, at a price of \$1,500.



PETE HOFFMAN

record. Everyone likes to win, but not at the expense of turning athletics into the sole purpose of the college's existence. Men are not segregated in the dorms according to race, creed or income group. The fraternities prohibit dining in the houses, and only a small number may live there.

THE EMPHASIS is one of the unity of the whole, not the importance of one or several select groups.

The formula for healthy development: mix academics with athletics, and add a sizeable amount of social relationships with other people. Living with people and understanding their ideas, actions, and problems goes a long way to make a more peaceful world.

The human experience gained at Dartmouth may not answer all the questions, or even most of them. However, it does give purpose and direction to the individual in his dealings with others. After a three-year loan to Uncle Sam, I'm returning to Dartmouth this fall for my senior year.

Why?—because I feel it serves a good blend of academics, athletics, and an opportunity for social development.

Add Space - with no Waste! REMODEL

Take an attic-full of wasted space, divide it into two rooms, add a youngster in each...and everything fits to a "T" with no waste anywhere! Our building advisor can help you plan remodeling like this...and there is no obligation.

YOU CAN DO IT ON OUR BUDGET PLAN!

We sell satisfaction... AS WELL AS LUMBER PRODUCTS!

Birmingham Lumber AND SUPPLY COMPANY, INC.

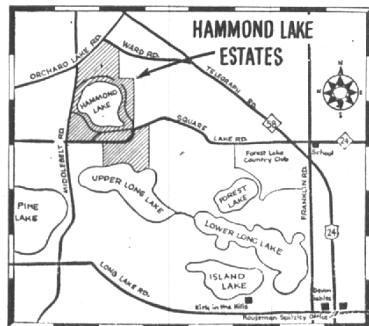
1025 HAYNES STREET
PHONE MI 4-3636

Between Hunter & Adams — 5 Blocks South of Maple
Hours 7:30 to 5:00 Mon. thru Fri.; 7:30 to 1:00 Sat.

FOR PRACTICAL REMODELING - CALL US!

HAMMOND LAKE ESTATES

No Motorboats Allowed • Excellent Fishing
Middlebelt and Orchard Lake Roads



THE PERFECT SETTING...

FOR YOUR CITY AND LAKE HOME

Sales over \$200,000 in last 90 days! Here's why...

Beautiful, wooded Hammond Lake Estates give you the freedom of suburban living with close-to-the-city conveniences. Set on rolling countryside with winding roads, the lake jobs are 80 feet and larger by 22 feet. Hammond Lake offers 1 1/2 miles of beaches and is fringed with hundreds of pines, hardwoods, and apple trees. 10,000 feet of frontage on Hammond and Upper Long Lakes are available. Restrictions prohibit motor-driven craft. Inside lots with lake privileges are 100 feet and larger by 200 feet.

These exclusive and restricted home sites, known until recently as Westwind Farms, are only 10 minutes from the center of Pontiac; 25 minutes from Northland Center. Close to Kirk-in-the-Hills Church, Forest Lake Country Club, golf courses, lakes, several schools. Fine neighboring homes. Low township taxes. Truly the perfect setting for your dream home.

Lots priced low by comparison. See salesman on property or telephone or write for further information and restrictions.

HOUSEMAN-SPITZLEY CORPORATION

4th Floor, Washington Blvd. Bldg.
Detroit 26, Michigan
Phone Woodward 3-4816

Branch Office
Telegraph and W. Long Lake Roads
Phone Midwest 4-7422