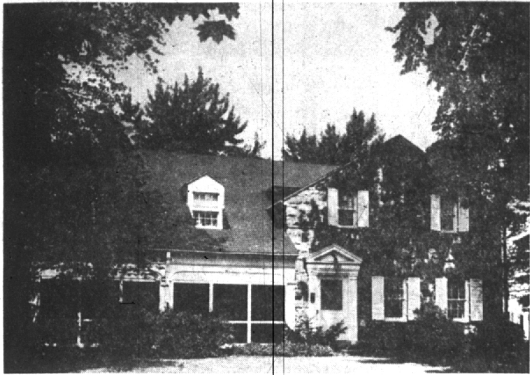


Have You Met

The E. T. Benson and family. Marilyn age 17, and Bob, age 14. They moved from Dayton, Ohio, to their home at 1840 Fairview drive

In July, Service manager of Frigid-aire and Delco products of General Motors Overseas Operations division, Benson is a graduate of Colorado school of mines and was affiliated with Pi Beta Phi fraternity and the Masonic lodge. Mrs. Benson was graduated from the University of Colorado, where she was affiliated with Pi Beta Phi sorority.

BLOOMFIELD VILLAGE



... on its highest knoll

An impressive farm Colonial ... surrounded by beautiful mature trees and gorgeous landscaping ... a 240 foot hilltop in the heart of Bloomfield Village.

The whole family will enjoy the ...

- Huge first floor Playroom ... plus basement Recreation room with bar and fireplace
- Mellowed panelling in the Library
- Airy, spacious Living Room ... separate Dining Room plus Breakfast Room
- 4 wonderful Bedrooms ... 2 tiled Baths ... plus servants!
- Sprinklered lawns ... tennis court ... carpeting ... dishwasher, disposal ... it has everything!

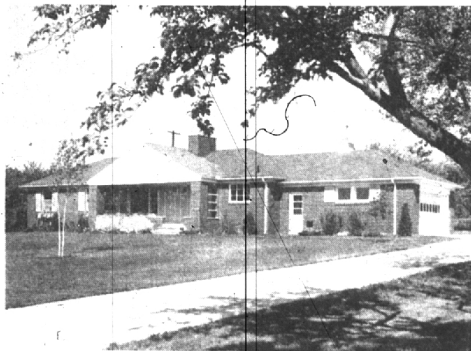
Enjoy country living near the city ... Luxurious family life with plenty of space for all. You'll love it ... see it today!

CALL

MAX BROOCK INC.
REALTORS
ESTABLISHED 1911

300 S. Woodward Ave.
MI 4-6700

Birmingham, Mich.
JO 4-6700



**A TRULY FINE HOME
IN A CHOICE SUBURBAN LOCATION**

4275 Franklin Road—in Bloomfield Township

1/4 Mile S. of West Long Lake Rd., 1/2 Mile N. of Lone Pine Rd.

Enjoy delightful sunsets from your picture window as you live in this quality-built new home, set in the midst of apple trees.

Three bedroom brick, with two baths, full basement; lawn and landscaping; aluminum screens, storm windows and doors; attached garage. Beautifully decorated interior; completely finished exterior—no extras to buy. Selected site, with trees,

360 foot frontage.

School bus to Vaughan School; 1/2 mile from Kirk-in-the-Hills Church. Only 20 minutes from Northland Center.

Your investment is protected by well-controlled neighborhood restrictions. This home is part of a growing new community—3 of our homes immediately adjacent have been sold recently.

\$32,500—excellent mortgage and terms

Open Saturday and Sunday, 1 to 6 p.m. and Any Time by Appointment

HOUSEMAN-SPITZLEY CORPORATION

Branch Office
W. Long Lake at Telegraph Rds.
Phone Midwest 4-7422

Detroit Office
4th Floor Washington Blvd. Bldg.
Phone Woodward 4-4816

**Local and Nearby Schools
Renovated During Summer**

In preparation for the opening of schools in September, extensive programs of renovations and repairs are being carried out in many of the schools in the three school districts of Birmingham, Southfield and Bloomfield Hills.

Overall housekeeping projects of washing, scrubbing and cleaning are being made out this month—all making ready for the opening of school.

The Birmingham school district budget provides a yearly figure of \$4,900 for general maintenance of its 12 schools. However, an additional \$50,000 building and renovation program is in progress at Barnum.

Southfield schools are in a continuous process of repainting and general renovation, with the maintenance crew under the direction of John Bailey, working on a year-around basis. The school district budget provides \$25,000 for this purpose.

Bloomfield Hills schools are completing a year's figure of \$10,000 program of repairs and renovations. The schools are in the midst of a three-year repainting program with the color scheme moving to lighter shades. The old portion of Wing Lake school is being redecorated. About 3000 pieces of new furniture are being moved into Vaughan school's temporary addition.

BUT BY FAR the most extensive program is being carried out in the Birmingham school system. At Adams School, which has been some major changes made because 150 junior high school students are going to have been housed in this building until the new junior high school is constructed.

To take care of these pupils in such a way as to provide as complete a program as at Barnum Junior High, it has been necessary to equip a home economics and an art department. Equipment for both of these areas has been chosen so that it can be moved into the new junior high school without loss.

AT ADAMS there also has been a major repair on the stokers which are very badly worn. Another major improvement has been installation of folding tables which will be removed from Barnum after the completion of the new cafeteria.

At Terry, the new addition is completed and everything in readiness for the opening. With the completion of the new addition it is now possible for new sidewalks to be installed so children approaching from various directions will be able to get to the school without having to go through mud and water.

AT PIERCE all shades in all classrooms were repainted as well as the toilets. The cafeteria and kitchen were also completely repainted and some halls were repainted to lighten and brighten them.

A \$50,000 building renovation program at Barnum is in progress. At Baldwin the major repair is in the toilets where the facilities are old and completely worn. Many of these facilities are so installed that we cannot do anything to put them into order. They are being torn out and new equipment put in their place.

At Barnum, stokers were added to the old furnace which controls the pool. A new driveway is being installed from Frank to George Streets. The new cafeteria, industrial arts, and music rooms will be in full operation and provide major relief at the opening of school. Workmen are remodeling the office, moving the library into more adequate quarters, and putting the art rooms where the industrial art rooms previously were located. Although it may not all be completed by the opening of school, rapid progress is being made and it will be rushed to completion. The home economics division will also provide fine and attractive facilities.

AT QUARTON many classrooms in the old division were repainted. Halls were painted and lightened. New stokers were installed.

At Walnut Lake there was painting in the new corridors, a new driveway was set up together with better parking facilities for teachers. The whole play area is being regraded to incorporate the new property acquired west of the site.

Bloomfield and Franklin schools the new divisions are being completed. At Bloomfield Village it seems the new division will be in complete operation at the opening of school. At Franklin, school

**Hills' Faculty
Staff Increased
By Ten Teachers**

Bloomfield Hills school district is augmenting its 1954-55 faculty by hiring 10 additional teachers. From the total of 14 new teachers in the area, four are replacements. Below is a list of names of the new teachers in the area, their home town, subjects they will teach and the schools they represent:

Doris E. Balwinski, Bay City, social studies, high school.

Marian Barry, Dearborn, commercial, high school.

It has been fenced so as to control games, new lights have been installed, and the bleachers are being installed on the west side in a semi-permanent fashion. This field ought to be very adequate for football this fall and also ought to be attractive and a marked improvement over what the system has had in the past.

IT HAS BEEN necessary to put in modern fold doors so a portion of the art room could be used as study hall until the new division will be completed by the opening of school.

The journalism department has been moved from the English department, which is in the eastern end of the building to an area adjacent to the printing department. By a complete renovation of this area, it is possible to carry on all journalism work adjacent to the printing department.

There has been a general roof inspection of every building in the system and although there are no major roof repairs required this summer, many minor repairs are being taken care of so roofs will be in good condition for the school year 1954-55.

There has also been an effort made to improve all of the school grounds as much as possible. Tentative plans are underway for landscaping all areas where there has been new construction.

Democrats Convene

Delegates from the Birmingham Democratic club who attended the state convention at Grand Rapids last week were Clark Hallock and John Dolan. Alternate delegates were Joseph A. Reines and Mrs. Donald J. McGee, with honorary alternate, Mrs. Jane Loid.

Mrs. Mary Ellen Clark, Birmingham, all subjects, Vaughan.

Mrs. ANINO HILL, Shnee, Mich., elementary music supervisor in all schools.

Mrs. Myrtle Emily Johnson, Birmingham, elementary, Wing Lake.

Margaret L. MacKenzie, Muskegon Heights, elementary, Vaughan.

Eileen Derkfitz, Keego Harbor, English and history, high school.

Dale R. Stevens, Midland, math and science, high school.

Mrs. Julius Vandenbergh, Rochester, primary, Vaughan.

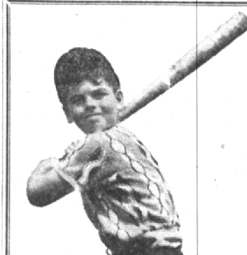
Beverly Warlick, Sylvan Lake, beginning, Vaughan.

Claine C. Wilson, Huntington, W. Va., elementary, Vaughan.

There is still one vacancy at Wing Lake for an elementary teacher.

Back from Vacation

Mrs. and Mrs. John Wolf have returned to their home on Juniper court after spending several days at Rolling Brook Inn, Harbor Springs.



**DON'T MISS
THESE BUYS!**

STEPLADDER 4 ft. \$2.88
CEILING TILE Decorative (4 ft. x 6 ft.) 9c

GARDEN TOOLS, FERTILIZER, SEEDS, TRELIS, ARBORS, 10% off
FLAGSTONE, GENUINE VERMONT Grey, blue, green, multi-color—per lb. 4c
WARDROBE SLIDING DOORS (4 ft. x 8 ft.) (4 ft. x 6 ft. x 8 in.) (each) \$17.50

CEDAR FURNITURE 20% off
2x4x8-ft. FIR, STRAIGHT STOCK (each) 39c

PAINT SALE OUTSIDE WHITE (gal) \$3.19
FLAT SEMI-GLOSS extra gallon 1c

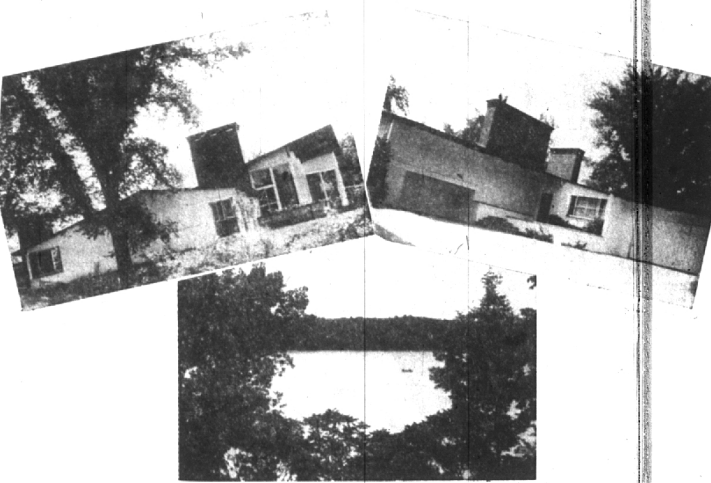
3 STORE YARDS SERVE YOU!

Wyoming at Lyndon Phone: WE 3-4830
8 Mile at Schenherr Phone: PR 6-6666
Birmingham 125 Eaton Phone: JO 6-3920
Stores open 'til 5 p.m. (Saturday, Wyoming 3 p.m.—8 Mile 1 p.m.—Birmingham 1 p.m.)

● BUY ON CREDIT ● ORDER BY PHONE ● FREE DELIVERY

FRIEND OF THE **Restrick** FAMILY SINCE 1884

"KINGDOM BY THE SEA?" ...



Panoramic vistas are yours from floor-to-ceiling window-walls overlooking Upper Straits Lake. All of the natural beauty of sky-blue waters seem right indoors. Custom-built in luxurious good taste, you will be impressed with its sophisticated simplicity. Some outstanding features are:

- Huge living room with marble fireplace. Birch paneled beamed ceiling. Beautiful window walls. 1 papered with silk print.
- Large screened porch with Dutch door entrance for service from kitchen.
- Library with mat-covered walls, built-in metal file cabinets, bookshelves.
- Master bedroom with fireplace; private bath ... white Formica. Dressing closets.
- Guest room with two double closets, mirrored doors. Maid's room.
- Powder room with large stall shower, glass door, hand-painted wall paper.
- Pantry with Monel metal counters, flat silver drawers, tray closet, cupboards.
- Grounds terraced to the water and include rock garden, fruit trees, etc. 185 feet of shore frontage.

For those who demand the finest, the undeniable magnificence of this home will be apparent. You must see it to be convinced. Orchard Lake Country Club short distance away.

**SNYDER & KINNEY
& BENNETT
INC.
Realtors**

239 S. Woodward

Midwest 4-7000

**Complete
Convenient Services**

**MORTGAGE
LOANS**

Use our nearby suburban office for FHA or conventional loans on new and existing homes. Insurance and experienced sales services also available if desired.

**HOMER
WARREN
& COMPANY**

600 Dime Bldg., Detroit 26
Woodward 1-0321
Suburban Office
4268 N. Woodward Ave.
Royal Oak
Jordan 6-3188