

THE LONELIEST MAN IN THE WORLD,
THE ATHEIST

As the sun sinks into the abyss of his lost tomorrow,
And shadows cross the footstep of his mind,
He spears his disbelief before our eyes . . . his aim
To disillusion the meek who pay homage to a Power
Beyond man's scientific dream of accomplishment.
His literal translation of man's faith in the intangible,
His complacency in defining the instinct to worship . . .
As an interloper upon the privacy of personal freedom.
And the implication that God is a figment of the imagination
Are objectives through which even fools can see.

This cacophonous nature, blind to what is truth,
Rejects the yearning recessed in his soul,
Leaning upon his staff of hate, maliciously inclined,
He hears false witness to a peace of mind.
His self-appointed seat in judgment—
A cry of worldliness to gain.

The confidence of rabble sheep—his claim to fame;
But when he passes WHO WILL WEEP?

PEG USHER,
2772 Santa Barbara,
Birmingham

Christ Gave Message Of Hope to Disciples

By FRANK C. GLABACH,
Leader, Unity Center

On the Thursday immediately preceding Good Friday, Jesus knowing that the time had come for him to pass from this world, said to his disciples, "I am going where you cannot follow me at present."

Then He sought to convey to them the spiritual meaning and the purpose of his mission as the legitimate manifestation of the Christ of God. The only possible revelation in form of the Christ, Jesus is in and through man when he is lifted up—elevated in conscious realization to the truth of what he is in Being.

Phillip said, "Show us the Father."
Jesus answered, a little exasperatedly, "How sayest thou show us the Father? Do you not understand I am in the Father and the Father is in Me?"

WHEN JESUS saw the fear that the loss of His leadership was creating in the disciples, He said to them, "My Father, let not your hearts be troubled. In my Father's house are many mansions. I go to prepare a place for you that where I am you may be also."
Palm Sunday marked the beginning of the final week of Jesus Christ on earth. We read that He entered Jerusalem amidst a cheering crowd and its homage moved Him momentarily. They hailed him as the long awaited King of God's people. It was an hour of high enthusiasm.

BUT JESUS was under no illusions about the reception. He knew that the real significance of His life and teachings would be misunderstood and rejected.

Our Scriptures tell us (according to Moffatt), "When He saw the city as He approached, He wept over it saying: Would that you, too, knew, even today, on what your peace depended. But no, it is hidden from you . . . all because you would not understand . . ."

So with us. Until we understand and believe that Christ is the true idea of man in the mind of God, and that we are one with God in Christ, we shall be able to enjoy only a meager share with Him.

St. Hugo's Guilds Plan Fashion Show

"It's Cotton Time" is the theme of the fashion show which the Altar guild of St. Hugo of the Hills Catholic church will open the spring season on April 23. Under the general chairmanship of Mrs. Evelyn E. Fisher and Mrs. Charles H. Richert, the show will be held at 1:30 p.m. in the Woodcraft Lakes club house, the former Briggs home on East Long Lake road.

Go To Church This Sunday

SOUTHFIELD UNITED PRESBYTERIAN CHURCH
2157 West Ten Mile Road (near Lahser)

Easter Services

6:30 A.M. Sunrise Service
7:45 A.M. Youth Breakfast
8:45 A.M. Morning Worship
10:00 A.M. Ground-breaking Services

11:15 A.M. Morning Worship
6:00 P.M. Youth Fellowship
7:30 P.M. "At Work with the Word"

EASTER SUNDAY SERVICES
Communion Service 10:15 a.m.
Sermon by Rev. Schalkhauser

"God Clears the Road"
Sunday School 9:30 A.M.

PEACE AMERICAN LUTHERAN CHURCH
Temporarily Meeting at Parker School
3784 W. 13 Mile Rd. Royal Oak

First Presbyterian Church
CANDLELIGHT COMMUNION SERVICES
and
RECEPTION OF NEW MEMBERS
THURSDAY, APRIL 15 at 8:00 p.m.
FOR YOUNG PEOPLE AND THEIR FRIENDS
and
GOOD FRIDAY at 8:00 p.m.
FOR ALL CHURCH MEMBERS AND FRIENDS

EASTER MORNING
8:30-9:45-11:15 a.m. Morning Worship Services
Sermon Theme
"MEMORIES THAT EASTER REVIVES"
Dr. W. Glen Harris will preach

CHURCH SCHOOL:
9:45 a.m. Nursery through Senior High.
11:45 a.m. Nursery through Eighth Grade.

Announce Speakers For Evening Meets Of Methodist Units

Evening meetings are scheduled for April 20 by two women's groups from the First Methodist church. Both will convene at 8 p.m.

"Our Church History" will be the topic of Mrs. Carl Binkle when she addresses the Wesleyan group, meeting at the home of Mrs. William Younger, 2933 Yorkville.

Hostesses of this affair will be Mrs. Thomas Wilkinson and Mrs. Robert Peaces.

The Ruth Allen group is meeting with Mrs. Harris Stanbeck, 185 Westwood, who will be assisted by Mrs. Vic Guilmette and Mrs. M. W. Irvin. Devotions will be in charge of Mrs. Alfred Gault.

The speaker of the evening will be Mrs. Marshall Reed, wife of Bishop Marshall Reed, from Detroit. Her topic will be "Missions in India," illustrated with pictures.

Two-Day Sale to Be At Redeemer Church

Thursday and Friday, April 22, 23, are the dates selected by the Missionary society of Redeemer Lutheran church for its spring rummage sale. The affair will be held in the church basement, West Maple, from 9 a.m. to 5 p.m. both days.

Mrs. R. K. Lewis, Mrs. Lee Mohr, Mrs. Ernest Sheehan, Mrs. Adolphe Kowinski, Mrs. Karl Otto, Mrs. Harry Holgeson and Mrs. Herman Flebig are handling arrangements.

Early copy for church activities makes it better for us and better for you. Don't wait until the deadline, please.

LEGAL NOTICES

CITY OF BIRMINGHAM, MICHIGAN
NOTICE TO PROPERTY OWNERS
WEST MAPLE IMPROVEMENT

The City Commission of the City of Birmingham will meet Monday, April 19th, 1954, at 8:30 p.m. in the Commission Room in the Municipal Building to consider any objections to the construction of certain improvements on West Maple described herein and to the creation of a special assessment district, created to defray the cost of construction of:

Concrete integral curb curb pavement 23 ft. back to back

The Commission proposes to create a special assessment district to defray the cost of this construction and said special assessment district shall consist of the following described property:

PEMBROOK MANOR SUBDIVISION
Lots 342 to 443 Inc.
444 to 445 Inc.

Plans and estimate of cost of this project are filed with the City Clerk of the City of Birmingham for examination by the public. Individual assessments are not now available. They will be computed by the assessor after April 19th, 1954. If the necessity for this improvement is established by the Commission, and there will be another public hearing scheduled for the purpose of reviewing the assessments.

IRENE E. HANLEY,
City Clerk. 4-5

CITY OF BIRMINGHAM, MICHIGAN
NOTICE TO PROPERTY OWNERS
WEST MAPLE PAVEMENT WIDENING

The City Commission of the City of Birmingham will meet Monday, April 19th, 1954, at 8:30 p.m. in the Commission Room in the Municipal Building to consider any objections to the construction of certain improvements on West Maple described herein and to the creation of a special assessment district, created to defray the cost of construction of:

A concrete pavement 45 feet in width from back to back of curb on West Maple Avenue extending from the existing pavement of similar width on Maple at Linden to a point 28 feet west of the west line of Westchester Way.

A portion of the cost of this proposed improvement is to be paid by the Board of County Road Commissioners in accordance with the terms of an agreement executed March 29, 1954, whereby the County Road Commission agrees to pay that portion of the total cost which is represented by the cost of the construction of the 50 foot center and 100 percent of the cost of the drainage structures, said cost representing 60.00 percent of the total cost of the entire project.

The Commission proposes to create a special assessment district to defray the city's share of the cost of this construction, and said special assessment district shall consist of the following described property:

CHESTERFIELD SUBDIVISION
Lots 1 to 26, Inclusive

Plans and estimate of cost of this project are filed with the City Clerk of the City of Birmingham for examination by the public. Individual assessments are not now available. They will be computed by the assessor after April 19th, 1954. If the necessity for this improvement is established by the Commission, and there will be another public hearing scheduled for the purpose of reviewing the assessments.

IRENE E. HANLEY,
City Clerk. 4-5

CITY OF BIRMINGHAM, MICHIGAN
NOTICE TO PROPERTY OWNERS
DERBY STREET IMPROVEMENT—COOLIDGE

The City Commission of the City of Birmingham will meet Monday, April 19th, 1954, at 8:30 p.m. in the Commission Room in the Municipal Building to consider any objections to the construction of certain improvements on Derby Street—East in Coolidge, described herein and to the creation of a special assessment district, created to defray the cost of construction of:

Concrete integral curb curb pavement 23 ft. back to back

The Commission proposes to create a special assessment district to defray the cost of this construction and said special assessment district shall consist of the following described property:

PEMBROOK MANOR SUBDIVISION
Lots 446 to 448 Inc.

Plans and estimate of cost of this project are filed with the City Clerk of the City of Birmingham for examination by the public. Individual assessments are not now available. They will be computed by the assessor after April 19th, 1954. If the necessity for this improvement is established by the Commission, and there will be another public hearing scheduled for the purpose of reviewing the assessments.

IRENE E. HANLEY,
City Clerk. 4-5

CITY OF BIRMINGHAM, MICHIGAN
NOTICE TO PROPERTY OWNERS
DERBY STREET IMPROVEMENT—COOLIDGE

The City Commission of the City of Birmingham will meet Monday, April 19th, 1954, at 8:30 p.m. in the Commission Room in the Municipal Building to consider any objections to the construction of certain improvements on Derby Street—East in Coolidge, described herein and to the creation of a special assessment district, created to defray the cost of construction of:

Concrete integral curb curb pavement 23 ft. back to back

The Commission proposes to create a special assessment district to defray the cost of this construction and said special assessment district shall consist of the following described property:

PEMBROOK MANOR SUBDIVISION
Lots 446 to 448 Inc.

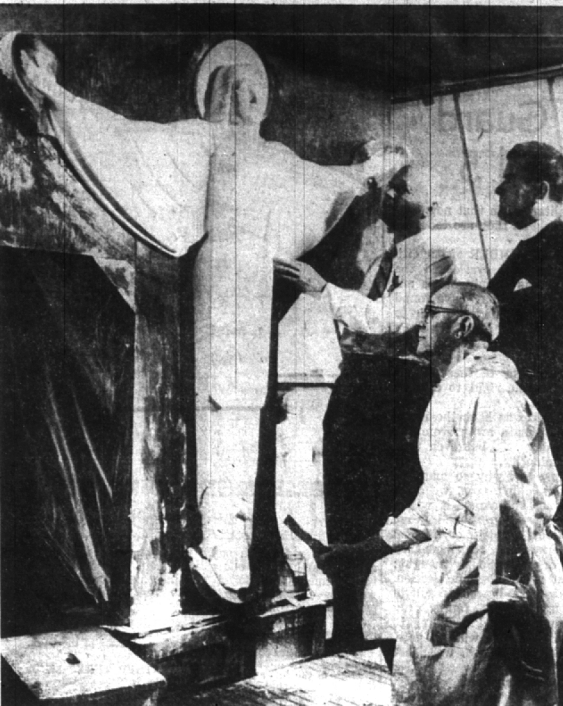
Plans and estimate of cost of this project are filed with the City Clerk of the City of Birmingham for examination by the public. Individual assessments are not now available. They will be computed by the assessor after April 19th, 1954. If the necessity for this improvement is established by the Commission, and there will be another public hearing scheduled for the purpose of reviewing the assessments.

IRENE E. HANLEY,
City Clerk. 4-5

FORFEITURE OF LAND CONTRACT
TO: RICHARD A. SHORT, JR.
You are hereby notified that certain land contract bearing date of the 21st of August, 1942, in and to said County of Jefferson, CLARENCE J. BOLDT and JULIA H. BOLDT, his wife, the first part, and RICHARD A. SHORT, JR., of the second part, in its entirety by reason of the non-payment of the installments of the principal and interest thereon, and you are hereby notified that the said land contract, and the contract between and said Clarence J. Boldt, electing contract forfeited, and you declare said forfeited and you are hereby notified to deliver up possession of said premises which you are now in possession under which you are now in possession under the terms thereof.

Said premises are described in said land contract as follows: All that certain piece or parcel of land being certain piece of land being County, Michigan, and described as: The Southeast 1/4 of Section 9, Town 10 1/2, Range 16 E., East, containing 10.63 acres of land, more or less.

Dated: March 15, 1954
JULIA BOLDT



SCULPTORS Chris Klein (rear) and August Holzbauer join the Rev. Harold E. Towne in inspecting the plaster model from which the fiber glass crucifix will be cast for St. James Episcopal church. The life-size figure will be dedicated at the Easter morning services. The final figure will be made from resin-saturated glass fiber cloth and is believed to be the first of its kind in the world. The original design was by William L. Mitchell of Birmingham, who followed Mr. Towne's suggestions for a vigorous figure.

Set Congregational Unit Meeting Dates

Beaver, Royal Oak
Circles III and IV will join for an 8 p.m. meeting the same day at the home of Mrs. F. Judson Phelps, 32280 Arlington. They will light the session with a "hanky shower" for the bazaar the sever will meet on April 21 with Mrs. Cir- II of Mrs. Harlan P. Bird, 3044

look to Plymouth for power news

In the low-price field, ONLY PLYMOUTH brings you NEW POWER for flashing new performance—NEW POWER for still more driving ease—NEW POWER for greater driving safety!

New PowerFlite transmission with new PowerFlow engine

PowerFlite, the newest, smoothest fully automatic no-clutch transmission in the low-price field, combined with the great new PowerFlow engine, gives you flashing acceleration with no lurch or lag. The PowerFlow engine's new 110 horsepower gives you ample reserve power for any driving need.

New Power Brakes

You get quick, smooth, straight-line stops with only half the usual pedal pressure! New Power Braking works with Plymouth's famous Safe-Guard hydraulic brakes which have two brake cylinders in each front wheel, where competing low-price cars have but one.

Full-time Power Steering

Plymouth's Power Steering works full-time, not "on again-off again." It soaks up road shocks, eliminates "wheel fight," gives you more precise control on rough, bumpy roads or in deep sand or mud. And Plymouth's Power Steering lets you park with one-fifth the normal effort!

your Plymouth dealer
headquarters for value

Just as Plymouth has always brought you the newest developments in riding comfort and driving safety, Plymouth now brings you the newest power advances in the low-price field! Come in and try Plymouth's sensational new performance, experience its great new driving ease—let us arrange your demonstration drive today!

Plymouth gives you the widest choice of drives!

PowerFlite fully automatic no-clutch transmission, Hy-Drive—the lowest-cost no-shift driving, Automatic Overdrive and Synchro-Silent transmission.

PowerFlite, Hy-Drive, Automatic Overdrive, Power Brakes and Power Steering each available at low extra cost. Fun for the whole family! Enjoy "That's My Boy" each week on CBS-TV. See TV page for time and station.

See your local telephone directory! look under "Automobiles"