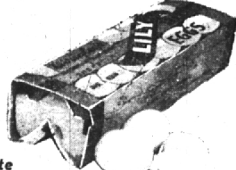


It's EASTER TIME at Wrigley's

Lily Brand—Grade "A" LARGE EGGS

For Poaching or Boiling **53¢** Doz.

White Only

- Cottage Cheese Wrigley's Creamed 16-oz. Ctn. **19¢**
- Brick or Muenser Wisconsin Piece or Sliced Lb. **45¢**
- American or Pimento LOAF CHEESE Piece or Sliced Lb. **49¢**
- Horse Radish VLASIC Pure Hot-Hot 5-oz. Bottle **23¢**
- Yellow Margarine DURKEE'S 1-lb. Ctn. in Qtz. **27¢**

Michigan Mild PINCONNING STORE CHEESE

45¢ Lb.

Ground Fresh As You Like It When You Buy It New Wrigley's

DEL CREST **COFFEE**
1 Lb. Bag **99¢**
Save 10c a Pound or More

Thrifty 3-Lb. Bag **\$2.95**

- FRUIT COCKTAIL Hunt's California 3 Lge. 2 1/2 Cans **\$1.00**
- PINEAPPLE Stokely's Finest or Sliced or Crushed or Chunklets 4 No. 2 Cans **\$1.00**
- BISQUICK Betty Crocker's 40-oz. Package **39¢**
- HEINZ TOMATO KETCHUP 2 14-Oz. Bottles **45¢**
- ROYAL PRINCE YAMS New Pack 303 Can **25¢**
- GOLD MEDAL FLOUR 5-lb. Bag **45¢**
- CRANBERRY SAUCE Ocean Spray 2 17-oz. Cans **39¢**

Pillsbury's CAKE MIXES

- Chocolate
- White
- Yellow
- Spice

3 Pkgs. **89¢**

STOKELY'S Finest TOMATO JUICE

3 Lge. 46 oz. CANS **69¢**

TUNE IN EVERY DAY!

WRIGLEY'S Exciting RADIO & TV FEATURES

LADY OF CHARM 10 a.m.—Mon., Wed., Thurs., Fri. WXYZ-TV, Channel 7

CISCO KID 7 p.m. Thurs.—WXYZ-TV, Channel 7

Tony Martin Song Parade 9:45 a.m.—Mon., Thurs. Fri.—CKLW

Ginger Rogers Show 12:45 p.m.—Mon., Thurs. Fri.—CKLW

Music Time with Dick Powell 1:45 p.m.—Mon., Thurs. Fri.—CKLW

Peggy Lee Picks the Tunes 2:45 p.m.—Mon., Thurs. Fri.—CKLW



TOP FROST

Whole Kernel **CORN**

Golden Yellow **7** 10 OZ. PKGS.

STRAWBERRIES Top Frost Sliced 4 10-oz. Pkgs. **98¢**

BROCCOLI Top Frost Fresh Frozen 2 10-oz. Pkgs. **49¢**

ICE CREAM Top Frost All Flavors 1/2-Gal. Pkg. **89¢**

ALL WRIGLEY MARKETS Will Be **CLOSED** From 12 to 3 **GOOD FRIDAY**

• Famous SWIFT'S PREMIUM
• WILSON CERTIFIED • IMPERIAL

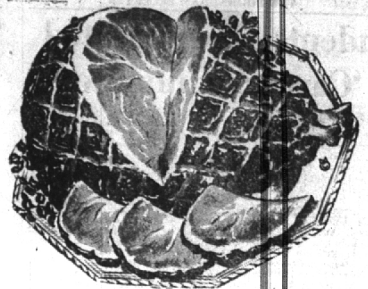
Fancy Sugar Cured HICKORY SMOKED

HAMS

Full Shank **59¢** Lb.
Half **59¢** Lb.
Cut from 12 to 16 Lb. Hams

Butt Portion **67¢** Lb. ★ Whole Ham **67¢** Lb.

- PORK LOIN ROAST Tender, Young 1st 7-Rib Cut Lb. **49¢**
- LEG of VEAL Michigan Milk Fed Lb. **49¢**
- VEAL ROASTS Shoulder Cut Knuckle Bone Removed Lb. **43¢**
- VEAL CHOPS Meaty Blade Shoulder Cut Lb. **49¢**
- LEG of LAMB Tender, Young Flavorful Lb. **69¢**
- GROUND BEEF For Meat Loaf, Hamburger, Spaghetti and Meatballs Lb. **39¢**



Fancy Young Tom TURKEYS

Oven Ready 16 lbs. & Up **49¢** Lb.

Fancy Beltsville TURKEYS

Oven Ready 5 to 8 lb. Avg. **59¢** Lb.

Selected Potted PLANTS FOR EASTER



EASTER LILIES

4 Blooms \$2.79 — 5 Blooms or More \$3.29

3 Bloom Pot **\$2.29**

In Gay Easter Colors

TULIPS

6-Inch Pot **\$1.69**

Gorgeous - Colorful

HYACINTHS

4-Inch Pot 79c

4 Blooms 6-Inch Pot **\$1.98**



Save 10c on 2 Cans

STOKELY'S Finest HONEY POD PEAS

2 303 CANS **29¢**

Mr. Whitney California COLOSSAL RIPE OLIVES

3 Jars **\$1.00**

Marie STUFFED OLIVES

No. 12, 8-oz. Ice Box Jar **39¢**

Luscio Whole SWEET PICKLES

Full Quart Jar **39¢**

Marie QUEEN OLIVES

No. 12, 8-oz. Ice Box Jar **29¢**

Lang's SWEET MIXED PICKLES

Lge. 1/2-gal. Jar **59¢**

Empress—Fancy Grade A KING CRAB-MEAT

6 1/2-oz. Can **98¢**



Miracle Whip

SALAD DRESSING

Qt. Jar **49¢**

A Complete Line of Easter CANDIES and TOYS

Brach's Candies

- FOIL WRAPPED EGGS Box of 6 **25¢**
- JELLY BIRD EGGS Ass't Flavors 1-lb. Cello **25¢**
- CHICKS & RABBITS Marshmallow 11 1/2-oz. Patsy Bag **29¢**
- FRUIT & NUT CR. EGGS Choc. Covered Box of 24 **39¢**
- MARSHMALLOW EGGS Choc. Covered Ctn. of 12 **23¢**

Complete Line of Assorted Easter Baskets

Fresh California—All Green

ASPARAGUS

2 lbs. **39¢**

Extra Select Plump, Tender Spears

Original Bunch 49 2 1/2 lbs. or Over



★ 635 SOUTH WOODWARD ★

Open Thursday, Friday and Saturday 'Til 9 p.m.