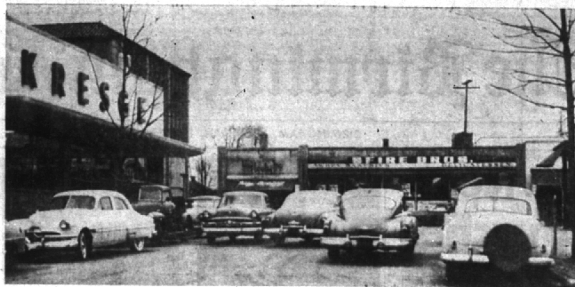




IT TOOK SEVERAL MOMENTS for the drivers of these cars on Martin street in front of the city municipal building to "fall back and regroup" when a lady, driving the Buick facing the camera, stopped to survey the parking situation along the street. Three cars behind her had to wait to pass the car going away from the camera. This is a common scene on the streets of Birmingham as drivers compete for places to park their cars.



A NEAR MISS WAS RECORDED when the Ford coming around the corner onto Henrietta from W. Maple met the Buick (center). The middle car's driver had veered far out into the center lane to pass another Buick (right) that was stopped for several minutes while its driver waited in hope that someone would vacate a parking space he might use. Shortly thereafter the driver pulled away and a few moments later was seen cruising past again—still looking. (Eccentric Photos)

Downtown Area Drivers Finding Parking Spots Scarce

By GIL HERMAN

While the city commission wrestles with problems involved in providing off-street parking — citizens, shoppers and workers struggle with the problem of where to leave their cars while they are in the downtown section of Birmingham. Traffic tie-ups are frequent as would-be parkers cruise slowly on downtown streets. Horns blow and motorists scowl as cars stop ahead of them while their operators scan parking lots in search of empty spaces.

Near collisions are numerous as through traffic attempts to get around parking spot hunters. Stand on any downtown corner for several minutes during any period of normal activity and you will see the same drivers pass several times as they circle the block, while looking for a place to stop.

WHAT DO the citizens, shoppers and employees think of the situation? "The lady, who asked to remain unidentified, put it bluntly: 'It's miserable.'"

Pointing to the need for more adequate off-street parking facilities was Mrs. Phillip Caldwell, 34 Harbour Terrace, Bloomfield Hills. "I'm sure shoppers would appreciate a place to park where they wouldn't have to be running to their cars every few minutes to make sure the parking meter hasn't expired," said Mrs. Caldwell.

SH SHE ADDED that it especially is difficult to find parking spots near the West Maple shopping area. Parking lots and stalls along the curb are generally packed. This necessitates parking on side streets which, in turn, requires a lot of walking, she said.

Paul Saraf, 1089 Dover road, and Tom Moffat, 4381 Forest, both of Pontiac and both employees of the Bell telephone company, gave a workman's viewpoint. Both said it is extremely difficult to find parking spots anywhere near their downtown base of operations. "I always get to Birmingham early in the morning, but after

I've had to hunt for a parking space for several minutes, and after I've had to walk half-a-mile from where I've found a place to park, I'm lucky if I'm not late for work," said Saraf.

MOFFAT AND Saraf both are service men for Bell. They report that in moving about the city, they sometimes are delayed by not knowing how to find a parking place. They said parking their truck while working on phone lines was not too great a problem. Because of the nature of their work, police usually are quite understanding and allow them to park in places not normally permitted.

TED BAUGHMAN, a Troy township bricklayer, said it takes him 20 minutes on the average to find a parking place when he comes to Birmingham once or twice a week to conduct business. "A Bloomfield Hills" resident, Bradley N. Higbie, E. Long Lake, said he had devised a system of beating the parking problem.

"Mrs. Higbie won't come to Birmingham unless I'm along to act as chauffeur. We wait to shop until I can go along, and then I drop Mrs. Higby where she wants to go and then I hunt for a parking space. Sometimes I find one after 15 minutes or so. Then I anticipate when Mrs. Higby will be finished with her shopping and I drive back and pick her up," said Higby. "We certainly would use off-street parking lots if adequate ones were available," he added.

POLICE CHIEF Ralph W. Moxley said off-street parking lots would do a great deal to relieve traffic congestion in the city. "Most of our congestion is caused by drivers maneuvering in and out of on-street parking spaces, or by persons who stop or drive slowly hoping someone will leave the curb," Moxley said.

Finally A Member

Troy township officially became the 12th member of the Southeastern Oakland County Garbage and Rubbish Authority Monday night when Troy board members adopted the authority's acceptance of incorporation. Troy's articles of disposal authority was delayed several months while other member communities studied Troy's anticipated population.

Protest Hearing With MDBF Filed By Birmingham Y

A letter addressed to John D. Maynard, president of the Detroit Y.M.C.A. dated April 3 and signed by Jerome H. Remick, Jr., Executive Director of the Metropolitan Detroit Building Fund has created some diversified opinions among Y.M.C.A. Committee people and community leaders.

In the letter, the Y.M.C.A.'s request for \$18,550,000 for the rehabilitation of existing "Y" buildings and the erection of six community branches, including Birmingham's Branch, was paraded in \$1,234,010. No allocations were made for buildings with dormitory rooms and a snack bar.

The request was disallowed by the MDBF for a building in Birmingham in their preliminary statement. This is subject to protest and a protest has been filed with a hearing scheduled before the end of the month. The local committee feels that the MDBF will be fair in its appraisal of Birmingham's needs when a hearing is held before the entire 91 member board of MDBF.

THE PROSPECTUS that was prepared by the local group and submitted to them in December had the backing of local church, educational and community leaders. It was the original intent of the group that a cross section of community leaders would make this presentation but when this idea was vetoed in favor of a small group by the MDBF, John D. Maynard and four other members from the Metropolitan Board of the "Y" made the presentations for all branch organizations.

Previously, the Detroit Y.M.C.A. had favorably passed on the request of the Birmingham group. This request came from William C. Gordon, chairman of the local committee of management and a member of seven.

According to Bill Roberts and Tom Ward, co-chairmen for the Permanent Building Committee of the Birmingham Y.M.C.A., members of their group are continuing to study preliminary plans with the idea in mind that eventually some additional facilities will be erected in Birmingham.

ASSORTED CHOCOLATES \$1.25 2 lbs. 12 1/2"

- Heavy 10-Oz. Faded Blue Denim
- Navy Knit Collar, Cuffs and Waistband
- Vat Dyed
- Sanforized
- Washable

\$4.95

Sizes S - M - L - XL

122 W. MAPLE

Mail or Phone orders MI 6-1589

Mail and Phone Orders Add 3% Mich. Sales Tax

Other Stores at: 7506 W. MICHIGAN, 15256 HOUSTON RD., 19129 MACK AVE.

Troy Gives \$5,000 To Fire Department

A fire department appropriation of \$5000 was approved by Troy township board members Monday night. Station one will receive \$3000 of this fund with the remaining \$2000 going to station two.

The township annually makes a contribution to the departments for whatever use they determine. This is the only compensation made to the volunteers who receive no pay. Only paid member of the department is Fire Chief E. M. Schroeder. Schroeder again was named chief by the board and his salary in the coming year will be increased from \$300 to \$400.

Explorers Head For Ortonville

Ortonville State Park will be the site of the B-EX Explorer in induction ceremonies campout April 19-20.

Eight "old time Explorers" and eight new Explorers will head for the wooded recreation center with Explorer Advisor C. E. Nickel early Monday morning to construct their own shelters and prepare their own food.

A night council fire ceremony will be held that night. The group will return Tuesday night. This is the largest active Explorer group in the city.

Further spring vacation activities will include a reunion of last summer's California Jamboree campers at the farm of Jack Gibbons, Saturday, April 24.

Southfield Asks \$19,000 Charge For Fire Service

The decision of fire protection for Lathrup Village was placed back in the hands of the city Monday night when Southfield township board members made their final offer for township protection.

Lathrup Village city councilmen, who started with a \$12,000-a-year offer for continued coverage of the city by the township department, last week submitted what they termed their last offer when they submitted a \$15,500 figure.

THE TOWNSHIP and city still are nearly \$4,000 apart in their thinking and Southfield agreed to charge \$19,000 for the first year's service that ends next month and proposed that a formula figure of 3.35 as applied to Lathrup's assessed valuation would be used in future years. This formula would result in a charge near \$20,000 for 1954-55 fiscal year.

Board members also extended service to the city for a 60-day or less period after the May 22 date should Lathrup decide to create its own department.

Lathrup councilmen will discuss establishment of a city volunteer department at their April 19 meeting.

NEW DOG COLLAR
Chrome Snap-On Medium to Heavy Duty Custom Made 9" to 18" sizes \$1.35
1 1/2" Nickel Silver, Tan, 60c
1 1/2" Tan 60c 1 1/2" Tan 75c
LLOYD'S Birmingham, Michigan

Ask Further Study On Percent Figure

Lathrup Village city councilmen still are not satisfied with a combined resolution regarding the city's population percentage for tax diversions.

Councilmen Saturday afternoon referred the resolution, which has already been approved by Southfield township, back to City Attorney William Ewart for further study and recommendation.

WE HEARD IT SAID BY—
B'HAM, CITY ENGINEER L. R. GARE: "Oak street is due for resurfacing, probably within the next two years."

TYPEWRITERS
ADDING MACHINES
REPAIRED
New and Rebuilt Typewriters For Sale—Rentals
Birmingham Printing
369 EAST MAPLE • MI 4-7470

Tre-Ore Services Ushered By Hi-Y
Birmingham High School Hi-Y members under the direction of James Reeder, Carson James, Richard Brown and Henry Bakkeren will usher in the Union Good Friday Tre-Ore services of Birmingham Protestant churches April 16. The three hour services have the Rev. Robert D. Dewey, Rev. Emil Kontz, Rev. W. Glen Harris preaching at 12 noon, 1, and 2 p.m. in the sanctuary of the First Baptist Church. Along with their religious activities, members of the Hi-Y are preparing for a tree-planting weekend at Camp Ohyesa in May. High school boys can become members of this club by attending to its purpose and platform. Detailed information of the group's activities may be had from the "Y".

It's Not Too Late . . .
To Get Your . . .
EASTER BONNET
Visit Nan's Hat Bar \$2.98 to \$5.98
NAN'S HAT SHOPPE
47 W. Maple MI 4-2412

ELIMINATE!
"HUSBAND FATIGUE"

A CONDITION CAUSED BY OVER EXERTION CUTTING YOUR LAWN!

FOR ECONOMICAL, EFFICIENT, DEPENDABLE GRASS CUTTING SERVICE CALL -- TUlSa 3-2475

GENERAL RICHARD ENTERPRISES 2654 WHALEN AVENUE DETROIT 17, MICHIGAN

Your Invitation to Outdoor Ease . . .
the **Durham DURElaxer**
It's oh . . . SO Comfortable!

FOUR COMFORT POSITIONS

FOLDS FOR STORAGE Simply hang it up when you reluctantly put it away . . .

Your BEST BUY in a Contour Chair!

You'll relax . . . with feet supported . . . really rest . . . in the DURElaxer. It's adjustable to four distinct comfort positions, equipped with armrests for even more ease. Gives the gay touch you want for lawn or garden. Tubular steel frames are moulded on modern lines with plaid

Saran, washable plastic coverings in gorgeous colors. The cost is reasonable for so much comfort and good looks. Wonderful for watching TV too! Be sure of healthful relaxation for all the family. Buy enough DURElaxers to go around. 17.95

THE Triangle FURNITURE CO.
Colonial Shops

220 Washington Drive Royal Oak 128 South Woodward Birmingham
Open Friday evenings until 9 p.m.

The Birmingham Eccentric
Published every Tuesday at Birmingham, Mich., in the Eccentric Building, 15256 North Woodward Avenue, Telephone MI 4-1100
GILBERT R. AVARILLI
Editor and Publisher

Entered as Second Class Matter in the U. S. Post Office at Birmingham, Michigan, under the Act of March 3, 1879.

SUBSCRIPTION RATES
(In Oakland County)
One Year . . . \$5.00
Six Months . . . 2.50
Three Months . . . 1.50
(Outside Oakland County)
One Year . . . \$6.00
Six Months . . . 3.00
Three Months . . . 1.75

You Can Afford An EASTER TRIP PLUS A Wonderful VACATION

when you go **GREYHOUND**

Seattle, Wash. . . . One Way \$46.60
Miami, Fla. . . . 28.55
Washington, D.C. . . . 13.15
New York City . . . 16.00
Nashville, Tenn. . . . 12.50
Denver, Colo. . . . 26.60
Columbus, Ohio . . . 5.40
Chicago, Ill. . . . 7.05
Buffalo, N. Y. . . . 7.30
Mackinac City . . . 8.05
Louisville, Ky. . . . 9.30

(Plus U.S. Tax)

Big EXTRA Savings on Round-Trips FOR HOTELS, SIGHTSEEING, PRE-PLANNED VACATIONS

Visit the Greyhound Travel Bureau in the Terminal—Phone MI 4-4343
Greyhound Terminal
391 S. Woodward MI 4-4343

GREYHOUND

DANBY'S BLUE DENIM JACKETS

• Heavy 10-Oz. Faded Blue Denim
• Navy Knit Collar, Cuffs and Waistband
• Vat Dyed
• Sanforized
• Washable

\$4.95

Sizes S - M - L - XL

122 W. MAPLE

Mail or Phone orders MI 6-1589

Mail and Phone Orders Add 3% Mich. Sales Tax

Other Stores at: 7506 W. MICHIGAN, 15256 HOUSTON RD., 19129 MACK AVE.

DANBY'S

ASSORTED CHOCOLATES \$1.25 2 lbs. 12 1/2"

CREAM EGGS
Fresh, delicious cream centers. Vanilla, Strawberry and Coconut.
50¢ and 85¢ 85¢ box pictured

FRUIT AND NUT EGG
Delicious cream, nut and fruit center dipped in milk chocolate.
\$1.00

SHAIN'S Rexall DRUGS
GOOD HEALTH TO ALL FROM REXALL