

LOOK WHAT A DIME WILL BUY AT KROGER... **TEN \$ SALE**

Kroger

YOUR CHOICE!

LIVE BETTER FOR LESS

Copyright 1949, The Kroger Co.

MIX 'EM UP!

CORN

Packer's Label
Cream Style
No. 303

- SPAGHETTI . . . Bonelli Meatless . . . 15-oz. can
- KIDNEY BEANS . . . Avondale . . . No. 303 can
- CUT BEETS . . . Avondale . . . No. 303 can
- KROGER SALT . . . Plain or Iodized . . . box
- MACARONI . . . Kroger Elbo . . . 7-oz. pkg.
- SPAGHETTI . . . Kroger . . . 7-oz. pkg.
- HOT MUSTARD . . . Red Pelican . . . jar
- TOMATO PUREE . . . Royal Gem . . . 10-oz. can
- SANDWICH BAGS . . . Tidy House . . . 30-ct.

PEAS

Packer's Label
Garden Sweet
No. 303

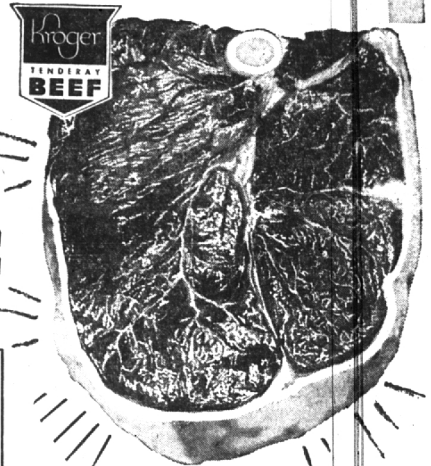
- TOMATO JUICE . . . Kroger . . . No. 2 can
- BAB-O CLEANSER can
- FACIAL TISSUE . . . Fairest . . . 200-ct.
- ANIMAL CRACKERS . . . Kroger . . . box
- BAKING CUPS . . . K.V.P. . . . pkg.
- DOG FOOD . . . Strongheart . . . can
- PORK & BEANS . . . Kroger . . . 16-oz. can
- VANILLA . . . Avondale . . . 3-oz. bot.
- INSTANT JELLO . . . Chee., Vanilla Butterscotch . . . pkg.

10¢

ROUND or SWISS

Steak 79¢

COMPARE—It's not ONLY the price per pound that makes a value . . . It's what you get in the way of edible meat that counts, and Kroger's cutting method assures you of more meat, less bone, less waste before your meal is weighed and priced!



- Porterhouse Steak . . . Long End Cut Off . . . Excess Waste Removed . . . U.S. Choice lb. 85¢
- Sirloin Steak . . . Long End Cut Off . . . Flat Loin bone removed . . . U.S. Choice, Tenderay lb. 19¢
- Chuck Roast . . . U.S. Choice Blade Cut lb. 49¢
- Pork Chops . . . Lean and Meaty . . . Ring . . . lb. 49¢
- Ground Beef . . . Kroger—The Finest . . . lb. 43¢
- Bologna . . . Buy 2 or 3 . . . lb. 39¢
- Bacon Squares . . . Armour . . . lb. 49¢
- Sweetbreads . . . Genuine Calf . . . lb. 69¢
- Canadian Bacon . . . Genuine Maple Leaf Sliced . . . 4-Oz. Pkg. 59¢

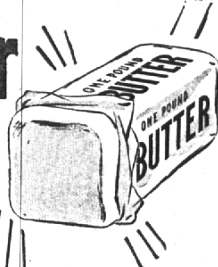
- Peanut Butter . . . Kroger 20-oz. jar 49¢
- Dill Pickles . . . Dandy Kosher Dills 1/2 gal. 39¢
- Fresh Milk . . . Sealtest, Wilsons, Save more! Buy the paper carton 1/2-gal. 38¢
- Canned Milk . . . Pet or Carnation 4 tall cans 53¢

KROGER REDUCES BUTTER PRICES!

Butter

Country Club Roll

90 Score **59¢**



- Tuna Pie . . . Star Kist . . . 3 7-Oz. Pkgs. \$1.00
- Burnett's Vanilla . . . 1 1/2-oz. bot. 33¢
- Dill Pickles . . . Aunt Jane's Hamburger Slices . . . 16-oz. jar 27¢
- Instant Coffee . . . Nestles 2-oz. jar 59¢
- Cake Mix . . . Angel Food Betty Crocker . . . 17-oz. pkg. 59¢
- Nylast . . . for your nylons . . . 4-oz. bot. 39¢

FRESH CALIFORNIA

Broccoli 19¢

Fresh, Large Bunches. Serve with Cheez Whiz or Your Favorite Sauce!

Large Bunch

Peppers . . . Green Bell 3 for 19¢

Pascal Celery . . . 1gc. stalk 23¢

Grapefruit . . . 5 Lge. 64 Size 39¢

Rhubarb . . . Hot House . . . lb. 19¢

Red Potatoes . . . New Florida U.S. No. 1 Size "A" 5 lbs. 23¢

Lipton TEA BAGS 48 Count 59¢ 1/2 Lb. Black 72¢	Rinso Large Package 29¢	Lux Flakes Large Package 29¢	Surf Large Package 29¢	Breeze Large Package 30¢	Silver Dust Large Package 29¢	Lux Liquid Detergent 12-Oz. Can 39¢	Wishbone Italian Style Dressing Dressing
Lux Soap Regular Size Bars 3 for 25¢	Lux Soap Large Bath Size Bars 2 for 25¢	Lifebuoy Regular Size Bars 3 for 27¢	Lifebuoy Large Bath Size Bars 2 for 25¢	Karo Syrup Blue Label 24-Oz. Bot. 22¢	Mazola Oil Gallon Jug \$2.19	Mazola Oil Quart Bottle 75¢	39¢ 8-Oz. Bot.

We reserve the right to limit quantities. Prices effective through Sat. April 3, 1954