

Ist Presbyterian Pushed to Beat Congregational

Favored First Presbyterian and First Baptist will battle it out tonight at Barnum junior high school in the finals of the Birmingham YMCA Church league playoffs at 7:00 p.m.

Last Thursday First Presbyterian ran up against a rugged First Congregational quintet and barely squeaked by 56-53. After building up a 30-28 intermission lead, Presbyterian fell back and saw Congregational fighting harder than ever to make up the difference in scores.

With the count tied at 53 Jerry Beck bumped Don Keener of Presbyterian with six seconds remaining in the contest. Don switched both attempts and that was the game.

Keener paced the victors with 30 counters on 13 field goals and four free tosses. Tom Beck with 19 points, Bennett Wright with 17, and Kirk Flack with 16 accounted for all but one of their squad's 63 tallies.

PEOPLE'S COLUMN

Another Accident On Southfield Rd.

To the Editor: Driving down Southfield road this morning, I noticed another accident.

Do you know what they propose to do toward adding another strip to take care of the greatly increased traffic?

If you will look up the record of accidents this year, you will be much astonished.

WILLIAM CHRISTIAN
2734 Morningside Plaza
Lathrup Village

EDITOR'S NOTE: Last October, The Birmingham Eccentric queried Oakland County Road Commission Engineer Leon Belknap regarding proposed widening of Southfield. Belknap said it would be several years before the county would be in position to consider such a project. He added that current thought has been for an eventual 204-ft. boulevard, but this would necessitate some additional right-of-way acquisitions, particularly in the Lathrup area where the present right-of-way only is 160 feet.

Pvt. H. D. Christian Stationed in Alaska

ALASKA—Pvt. Harold D. Christian, 48-47, Lutheran's Bob Olsen hacked Ron McCrumb with 14 seconds to go in the battle. Ron hit his first of two tries, breaking a 47-47 tie. Ron likewise paced the Baptist five with 19 markers.

Redeemer almost put on a Cinderella finish in trying to gain the playoff finals with their first victory of the year. However, Lady Luck decreed otherwise. Both Olen, Doug Lewis, and Doug Wuggazer totaled 38 for the losers.

Christ Church Cranbrook won a forfeit from St. James due to the scarcity of the latter's players.

Tonight's games pit First Presbyterian versus First Baptist at 7 p.m. and Lutheran Church of the Redeemer against Congregational in a battle for third place at 8 p.m. All games are played at Barnum junior high school.

FIRST BAPTIST

was fortunate in topping Lutheran Church of the Redeemer 48-47. Lutheran's Bob Olsen hacked Ron McCrumb with 14 seconds to go in the battle. Ron hit his first of two tries, breaking a 47-47 tie. Ron likewise paced the Baptist five with 19 markers.

Redeemer almost put on a Cinderella finish in trying to gain the playoff finals with their first victory of the year. However, Lady Luck decreed otherwise. Both Olen, Doug Lewis, and Doug Wuggazer totaled 38 for the losers.

Christ Church Cranbrook won a forfeit from St. James due to the scarcity of the latter's players.

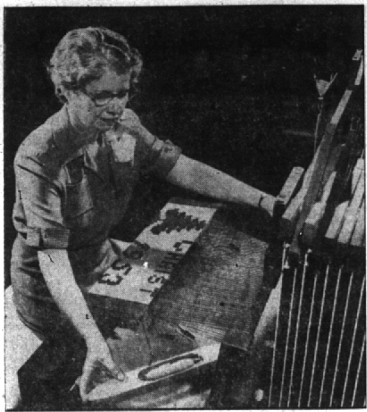
Tonight's games pit First Presbyterian versus First Baptist at 7 p.m. and Lutheran Church of the Redeemer against Congregational in a battle for third place at 8 p.m. All games are played at Barnum junior high school.

Lt. George Halpin Is at Fort Bragg

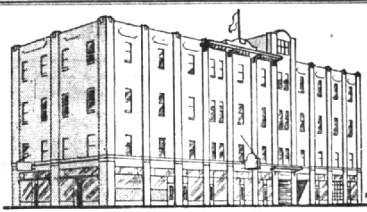
First Lt. George E. Halpin, Jr., whose parents, Mr. and Mrs. George Halpin, live at 1424 Buffner street, is now at Fort Bragg, N. C., preparing for Exercise Flash Burn, large-scale training maneuver scheduled for April and May.

Halpin is executive officer of the 113th Ordnance Direct Support Company which came from Camp Pickett, Va., to provide vehicle maintenance for some of the 135 military units taking part in the exercise.

Lieutenant Halpin entered the Army in 1947 and holds the Army of Occupation Medal for service in Germany and Japan and the National Defense Service Ribbon.



LADY AT HER LOOM—Sliding her shuttle across the raceway of her handloom is Mrs. Robert Auxier of Pittsburgh, Pa. She weaves clothes for herself and her husband on the machine. In this picture she is weaving a banner to be used in a Chaulauquac ceremony.



You Are Cordially Invited to Inspect
OUR MODERN STORAGE
Built Especially to Store Household Goods
Local and Long Distance Moving

Gaulker Storage Co.
9 Orchard Lake Ave., Pontiac, Mich.
Dial "O" ask for Enterprise 6305



This Spring on
Firestone TIRES

"With Spring In The Air It's Time To Rotate Your Tires"

See us for efficient service

BOB ADAMS SHELL SERVICE
Hunter at Maple MI 4-9750



BUILD IT YOURSELF and SAVE!

No. 42 50¢

Bookcases, tables, chairs, shelves, cabinets, valances—all are easy to build with Full Size "Build It Yourself" Patterns. Come in to day to see the hundreds of ways you can have fun and save money with Easy-Build Woodworking Patterns. We have all the materials you need.

SPRING RESOLUTIONS

MOTHER says "BIRD"
"I love the gay colors of my new Bird Master-Bit roof—it adds so much beauty and charm to the house!"

DAD says "BIRD"
"I'm sold on the extra protection I get with Bird Master-Bit. They last longer and are fire-resistant!"

THE CHILDREN say "BIRD"
"All the kids in the neighborhood envy our house—it's the best looking one since we got a Bird Master-Bit Shingle Roof!"

OUR HOUSE says "BIRD"
"It's great to feel all directed up to the brand new roof top of Bird Master-Bit—and now I won't have to worry about leaks when it rains or snows!"

WE say "BIRD"
"And we've said Bird Master-Bit are the best for years—will stay to it—the quality is made for every homeowner that takes pride in his house!"

Make your Spring Resolution NOW—Get a Bird Master-Bit Roof—It Tops Them All!

DEALER'S NAME ADDRESS AND TELEPHONE NUMBER

BIRD & SON

LAWSON & SON LUMBER & SUPPLY CO.
653 S. Eton Rd.
BIRMINGHAM Phone Midwest 4-6810

Seaman Orr Serves Aboard Minesweeper

Robert W. Orr, seaman, USN, ship back to peak operating efficiency after an extended period of overhaul. During the period the ship paid a weekend visit to Kingstown, Jamaica.

Upon completion of refresher training exercises conducted between Jan. 4th and Feb. 12th at Guantanamo Bay, Cuba, the Hamilton underwent intensive training exercise currently taking place in the Puerto Rico and Virgin Island area.

Church Relief Fund

Special pledge envelopes were returned at Holy Name church for the arch-diocese this year for Sunday morning, designated as the "Bishop's Relief Fund". Monies received go to help the needy and orphaned throughout Europe. Goal for the arch-diocese this year is \$175,000.



Peterson HORIZONTAL SLIDING ALUMINUM WINDOWS

SMART STYLING
MORE CONVENIENCE
LESS WORK

THE WINDOWS WITH BUILT-IN, SELF-STORING STORMS AND SCREENS

IN THE HOME YOU PLAN TO BUILD, be sure you select windows that are easy to live with—pleasing to the eye, yet requiring minimum maintenance—windows you can wash without going outdoors, windows that open and shut easily, that let in the most light.

PETERSON WINDOWS will open on sliding steel rollers, have a hinged-point locking device, require no painting; eliminate putty, sash balances, cranks and springing hinges; never rust, swell, warp, rot or crack.

SEE THESE BEAUTIFUL, MODERN WINDOWS TODAY!

PETERSON WINDOW CORPORATION
1377 E. Eight Mile Road Phone: LI 5-0500 Ferndale 20, Michigan

Dry Clothes the Modern Way with an automatic GAS CLOTHES DRYER

IT'S SMART!
IT'S EASY!
IT WILL SAVE YOU and YOUR CLOTHES...
GET THE FACTS!

SEE YOUR GAS APPLIANCE DEALER
This Adv. Published in Cooperation with Gas Appliance Dealers by C. P. Co.

We Will BEAT

Anyone's Estimate For Expert **BODY BUMPING and PAINTING**

ESTIMATES WITHOUT OBLIGATION

The North Chevrolet Company
Service Dept. Open 7 a.m. to 9 p.m. Monday Thru Friday
7:00 a.m. to 5:00 p.m. Saturday
1000 S. Woodward
Midway 4-2735
Remember: Our Chassis Lubrications give 100% protection at no extra cost.

YOU AND YOUR LAWN (And Your Pocket Book Too)

- THINGS TO KNOW**
- Grass Seed is one thing—Lawn Seed is another. Lawn Seed is a combination of grass seeds, proportioned by experts, to perform definite functions for various situations and conditions.
- A good Lawn Seed will provide an honest combination of:
- PERMANENT SEED
 - TEMPORARY SEED
- The permanent seed will be Kentucky Blue, Fescue, Merion Blue, White Dutch, Clover, etc.
- The temporary seeds (called Nurse Grass) will be Red Top, Perennial Rye, Common Rye, Rough Stalk, Blue Grass, etc.
- These seeds will appear in the mixture in varying proportions dependent on the price or the purpose for which the area is to be used or the conditions under which the lawn is to be established.
- Temporary seeds are included to fill in bare spots quickly and to provide shade for the permanent seeds when they germinate.
- Red Top and the Rye Seeds germinate in 5 to 10 days. Fescue requires about 21 and Blue Grass takes up to 4 to 5 weeks.
- Rarely is a straight (single) seed used in lawn work for seeding or reseeding.
- Roll lawn lightly after applying seed. Don't make roller filled with water and don't roll while ground is wet. A compact surface prevents air from getting to the roots. If the surface gets too hard we can sell you an Aerator.
- THINGS TO DO**
1. Get going immediately—as soon as possible.
 2. Measure or estimate closely the area involved.
 3. Have a cupful of your soil analyzed for fertilizer requirements (County Agriculture Agent—35c; McClellan Ball Co.—FREE).
 4. Use a good LAWN FERTILIZER (10-6-4 partly organic is best) (we like Woodruff's GROSOD and Stadler's XXX).
 5. Buy a spreader (we rent them, but you will have a hard time getting one) and spread at rate of 20 lbs. to 1,000 sq. ft. (This is half the amount of other fertilizers and the cost per sq. ft. is therefore less.)
 - Note: Since grass grows about 4 ft. a year, fertilizing should be done a minimum of twice and preferably three times each season.
 6. Seed requirements are 1 lb. to 200 sq. ft. for new lawns and 1 lb. to 400 sq. ft. for established lawns.
 - DON'T use less seed than required. If the cost is running too high, dilute it with a less expensive temporary seed. Under-seeding is money down the sewer.
 7. Sow the seed (NOT with a fertilizer spreader.) Roll lightly, water frequently unless nature does it.
 8. On new lawns DON'T use weed killers and DON'T worry about the weeds. Many will mow out. 2-4M may kill grass plants less than a year old.

Since it would require a book to tell everything about lawns (if we knew it all) we have just given you a few pointers. Our staff may be able to help you with your problems if you will ask.

P.S. DORMANT SPRAY GOES ON TREES & SHRUBS NOW.
(Weather & temperature conditions permitting)

MCCLELLAN-BALL CO.
YARD-GARDEN SUPPLIES FARM-KENNEL
Phone MI 4-4133 BIRMINGHAM, MICHIGAN, 159 Brownell St.